

**NEW YORK STATE THRUWAY AUTHORITY
DEPARTMENT OF ENGINEERING**

**ALBANY, NY
SEPTEMBER 16, 2025**

**AMENDMENT NO. 2
TO**

**CONTRACT TAS 25-9A
D215012
MANCHESTER MAINTENANCE SECTION – ADDITION
AND ROOF REPLACEMENT AT MILEPOST 340.20
IN THE SYRACUSE DIVISION
OF THE NEW YORK STATE THRUWAY
IN ONTARIO COUNTY**

**IN THE LETTING OF
SEPTEMBER 24, 2025**

NOTE: This amendment shall be attached to and become a part of the Proposal for Contract **TAS 25-9A**

NOTICE

For Electronic Bidders, the Project's amended EBSX file will automatically account for any necessary item changes (deletions, changes in quantities, or additions) that this Amendment may describe as being required regarding the project's estimated cost. Instructions to make physical changes to the Project Proposal's bid sheets are intended for "paper" Bidders who choose to submit bids via paper.

PLANS

1. **ADD** Drawing Number A100, page 20A-A2 to the plan set *after* page 20 of 63. The Demolition Key Plan is now available.
2. **ADD** Drawing Number A800, page 34A-A2 to the plan set *after* page 34 of 63. Door, window, soffit, end wall and other details are now available.
3. **ADD** Drawing Number P500, page 54A-A2 to the plan set *after* page 54 of 63. Plumbing details are now available.

The Bidder **MUST** complete Page **826** of the Proposal acknowledging receipt of this amendment. If the Bidder fails to complete the "Amendment Acknowledgement" sheet, his bid could be declared informal thereby delaying award of the contract.

PLEASE BE GOVERNED ACCORDINGLY WHEN SUBMITTING BIDS.

**Brent E. Howard, P.E.
Chief Engineer**

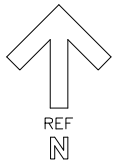
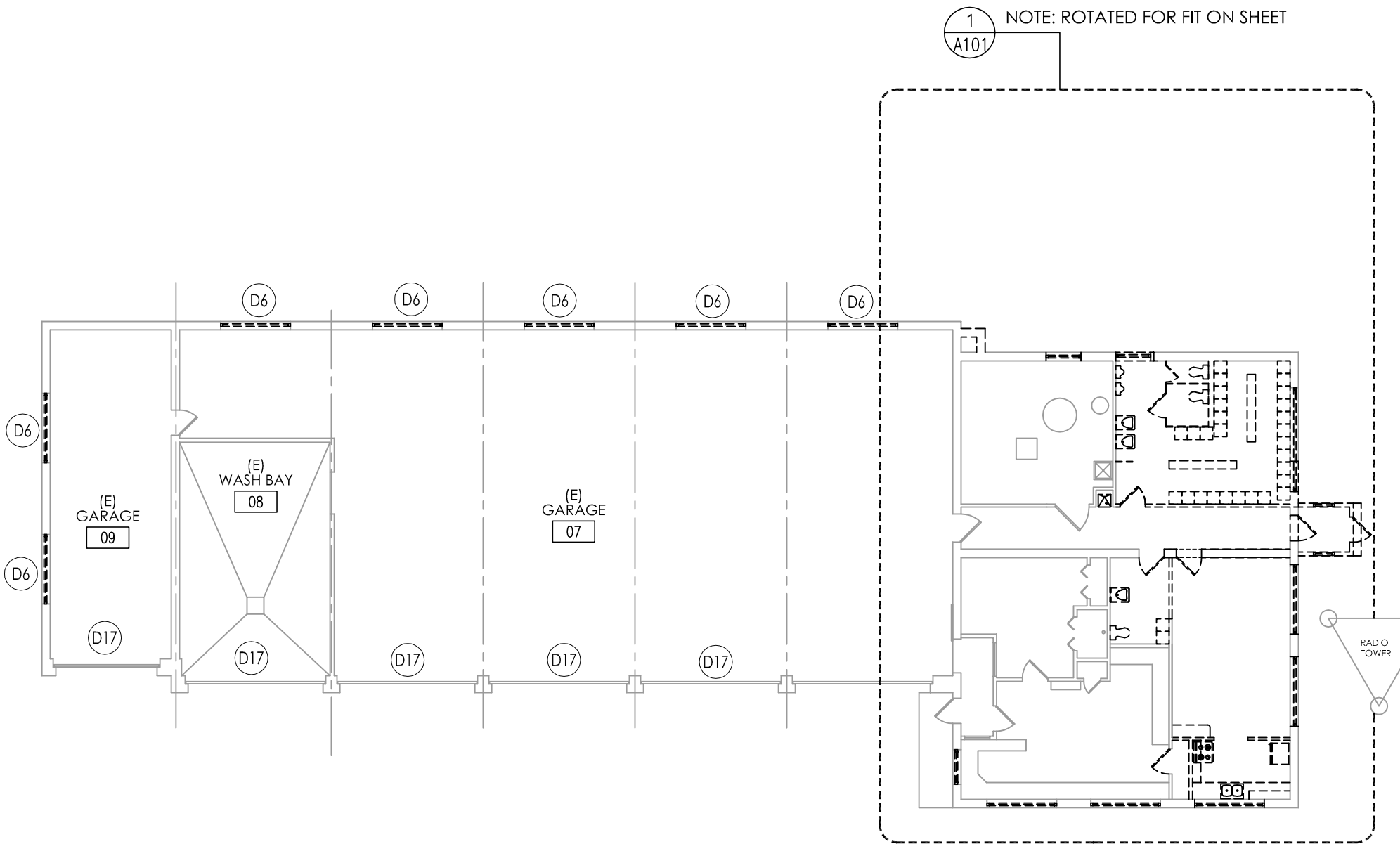
TA NUMBER/DWG NUMBER
XXX
CHECKED BY:
XXX
DRAFTED BY:
XXX
CHECKED BY:
XXX
DESIGNED BY:
J.L. MORRIS
BUREAU DIRECTOR:

THIS SHEET DOES NOT SUPERSEDE ANY SHEET

20A-A2
63

DEMOLITION KEY NOTES

- D1 REMOVE PORTION OF CONCRETE FLOOR SLAB AS REQUIRED FOR INSTALLATION OF NEW UNDER-SLAB PLUMBING.
- D2 REMOVE ENTRY VESTIBULE ENCLOSURE INCLUDING SLAB
- D3 REMOVE BRICK CHIMNEY IN ITS ENTIRETY INCLUDING FOUNDATION. CLEAN AND PATCH EXPOSED EXISTING BRICK WHERE IT IS NOT SCHEDULED TO BE COVERED BY METAL PANELS.
- D4 REMOVE EXISTING CEILING
- D5 REMOVE DOOR, FRAME AND HARDWARE.
- D6 REMOVE EXTERIOR WINDOW.
- D7 REMOVE MASONRY PARTITION FULL HEIGHT.
- D8 REMOVE PLUMBING FIXTURES AND ASSOCIATED PIPING, REFER TO PLUMBING DEMOLITION.
- D9 REMOVE DRINKING FOUNTAIN
- D10 REMOVE LOCKERS AND LOCKER BASE.
- D11 REMOVE TOILET ROOM ACCESSORIES.
- D12 REMOVE PORTION OF BRICK SILL TO BE FLUSH WITH WALL BELOW.
- D13 REMOVE TOILET PARTITIONS
- D14 REMOVE PORTION OF LOAD BEARING MASONRY WALL. PROVIDE TEMPORARY SUPPORT FOR ROOF CONSTRUCTION.
- D15 REMOVE MILLWORK.
- D16 REMOVE EXISTING FLOORING DOWN TO CONCRETE SLAB BELOW.
- D17 REMOVE EXISTING OH DOOR OPERATOR AND ASSOCIATED ITEMS.
- D18 REMOVE SILL AND WALL BELOW EXTERIOR WINDOW TO SLAB.

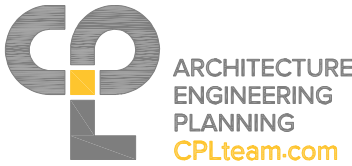


1
A100

DEMOLITION KEY PLAN

SCALE: 1/16" = 1'-0"

ALTERED ON:	AFFIXED ON: 09/12/2025
SIGNATURE: STAMP:	SIGNATURE: STAMP:



IT IS A VIOLATION OF LAW FOR ANY PERSON, UNLESS THEY ARE ACTING UNDER THE DIRECTION OF A LICENSED PROFESSIONAL ENGINEER, ARCHITECT, LANDSCAPE ARCHITECT, OR LAND SURVEYOR, TO ALTER AN ITEM IN ANY WAY. IF AN ITEM BEARING THE STAMP OF A LICENSED PROFESSIONAL IS ALTERED, THE ALTERING ENGINEER, ARCHITECT, LANDSCAPE ARCHITECT, OR LAND SURVEYOR SHALL STAMP THE DOCUMENT AND INCLUDE THE NOTATION "ALTERED BY" FOLLOWED BY THEIR SIGNATURE, THE DATE OF SUCH ALTERATION, AND A SPECIFIC DESCRIPTION OF THE ALTERATION.

REVISIONS			
DATE	DESCRIPTION	BY	SYM.



TITLE OF PROJECT ADDITIONS TO MAINTENANCE SECTION	CONTRACT NUMBER: TAS 25-9A
LOCATION OF PROJECT MANCHESTER MP 340.15	DATE: 09/12/2025
TITLE OF DRAWING DEMOLITION KEY PLAN	DRAWING NUMBER: A100

TA NUMBER/DWG NUMBER

XXX

CHECKED BY:

XXX

DRAFTED BY:

XXX

CHECKED BY:

XXX

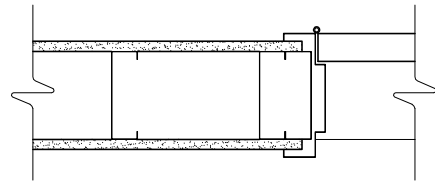
DESIGNED BY:

BUREAU DIRECTOR: J.L. MORRIS

34A-A2

63

THIS SHEET DOES NOT SUPERSEDE ANY SHEET



JAMB:

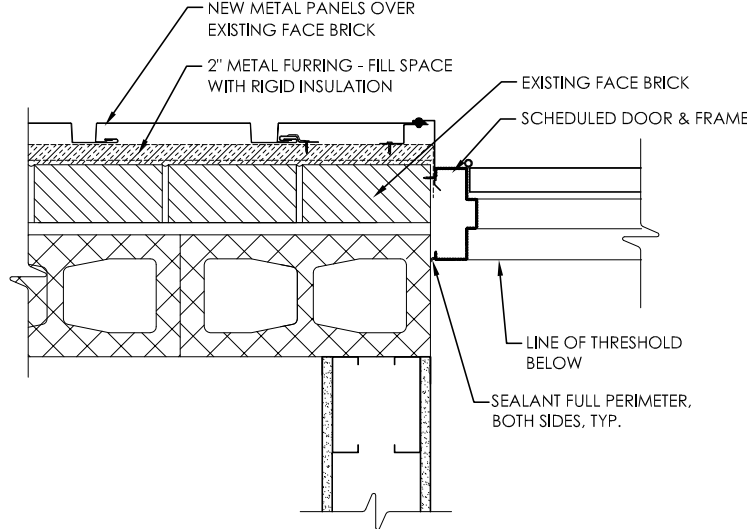
SCHEDULED PARTITION
TYPE
SEALANT FULL PERIMETER,
BOTH SIDES, TYP.
SCHEDULED DOOR &
FRAME, TYP.

HEAD:

1 DOOR JAMB/HEAD DET. @ MET. STUD PARTITION

1
A800

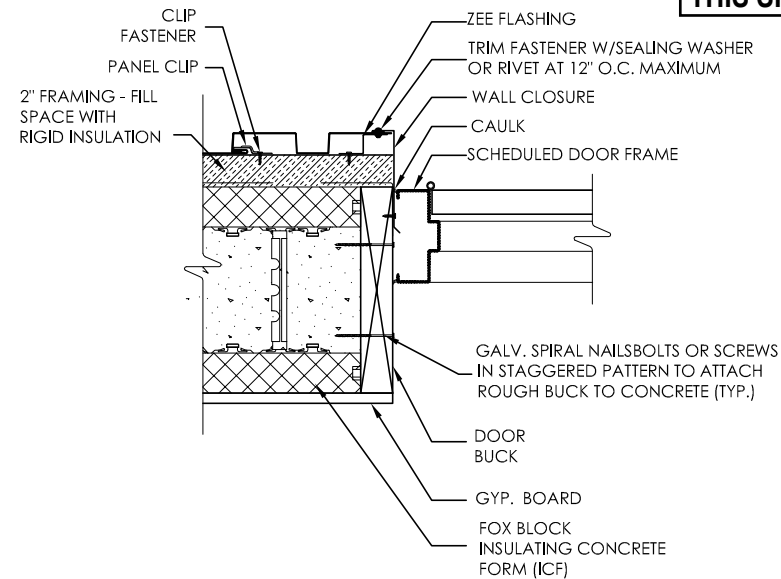
SCALE: 1" = 1'-0"



2
A800

2 EXTERIOR DOOR JAMB DETAIL W/ CMU BACK-UP

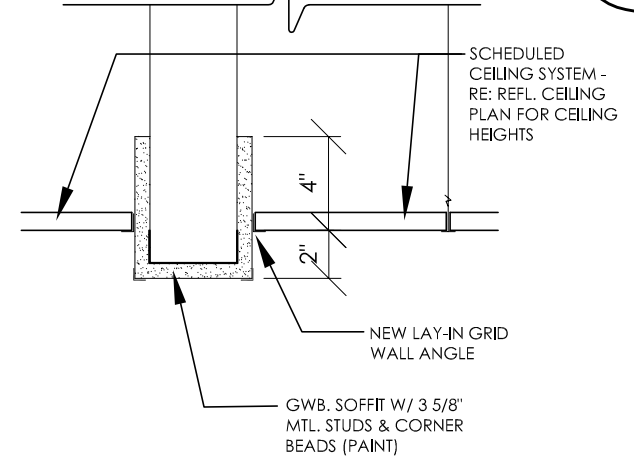
SCALE: 1 1/2" = 1'-0"



3
A800

3 DOOR JAMB/HEAD DETAIL @ EXTERIOR ENTRY DOOR

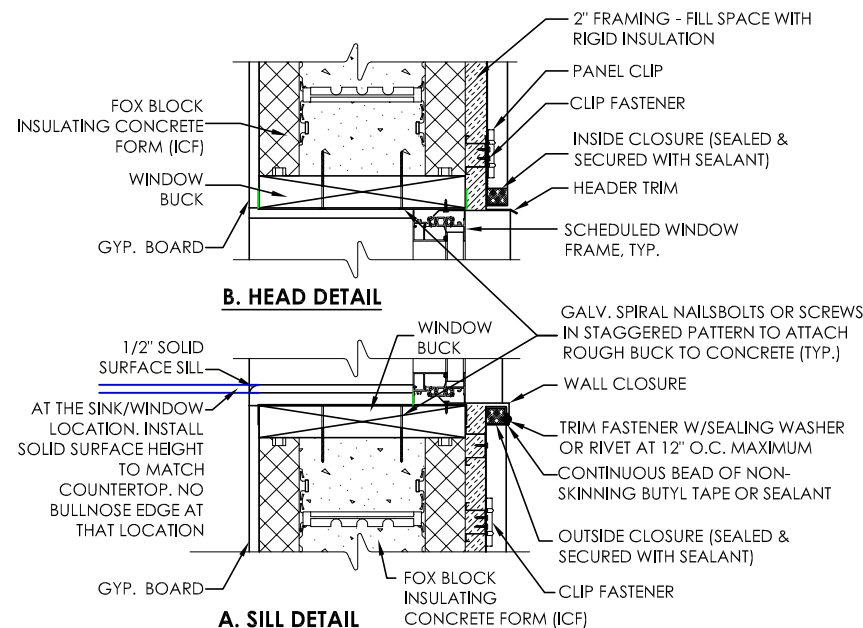
SCALE: 1" = 1'-0"



4
A800

4 TYPICAL SOFFIT DET.

SCALE: 1 1/2" = 1'-0"



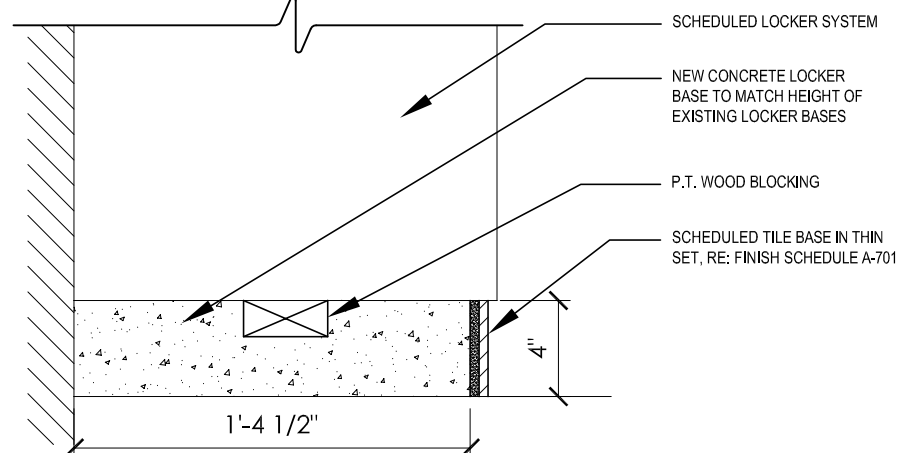
B. HEAD DETAIL

A. SILL DETAIL

5
A800

5 EXTERIOR WINDOW DETAIL

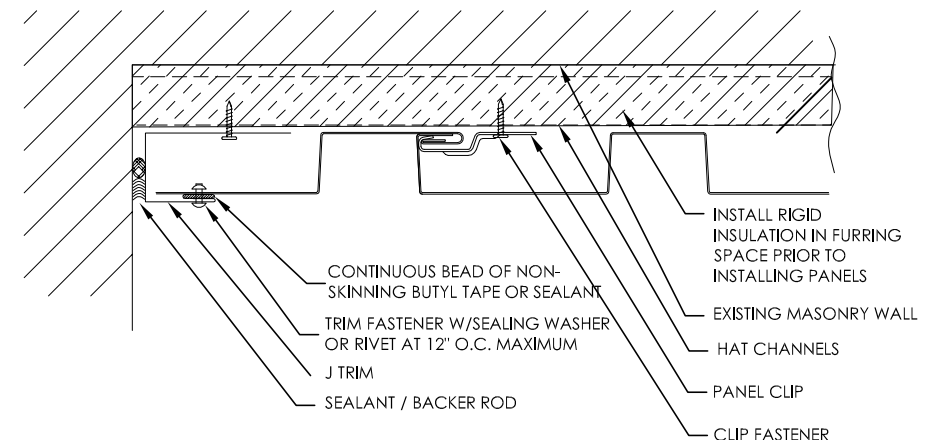
SCALE: 1" = 1'-0"



6
A800

6 SECTION THROUGH NEW LOCKER BASE

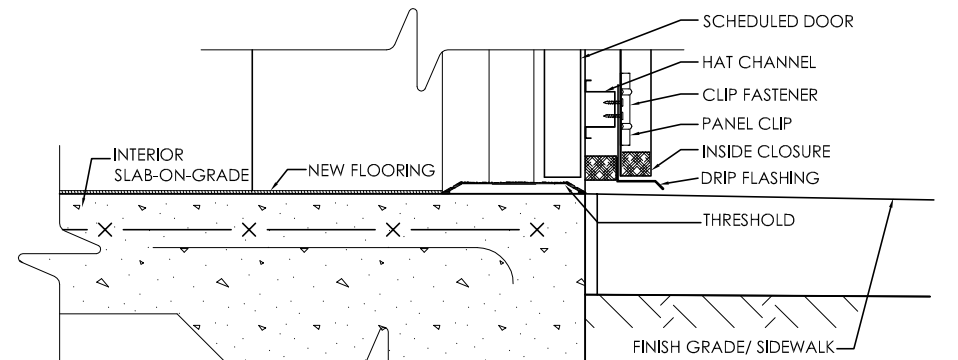
SCALE: 1 1/2" = 1'-0"



7
A800

7 METAL PANEL END WALL DETAIL

SCALE: 3" = 1'-0"



8
A800

8 THRESHOLD DETAIL

SCALE: 3" = 1'-0"

ALTERED ON:

AFFIXED ON:

09/12/2025

SIGNATURE:
STAMP:

SIGNATURE:
STAMP:



ARCHITECTURE
ENGINEERING
PLANNING
CPLteam.com

IT IS A VIOLATION OF LAW FOR ANY PERSON, UNLESS THEY ARE ACTING UNDER THE DIRECTION OF A LICENSED PROFESSIONAL ENGINEER, ARCHITECT, LANDSCAPE ARCHITECT, OR LAND SURVEYOR, TO ALTER AN ITEM IN ANY WAY. IF AN ITEM BEARING THE STAMP OF A LICENSED PROFESSIONAL IS ALTERED, THE ALTERING ENGINEER, ARCHITECT, LANDSCAPE ARCHITECT, OR LAND SURVEYOR SHALL STAMP THE DOCUMENT AND INCLUDE THE NOTATION "ALTERED BY" FOLLOWED BY THEIR SIGNATURE, THE DATE OF SUCH ALTERATION, AND A SPECIFIC DESCRIPTION OF THE ALTERATION.

REVISIONS

DATE	DESCRIPTION	BY	SYM.



Thruway
Authority

TITLE OF PROJECT
ADDITIONS TO MAINTENANCE
SECTION

LOCATION OF PROJECT
MANCHESTER
MP 340.15

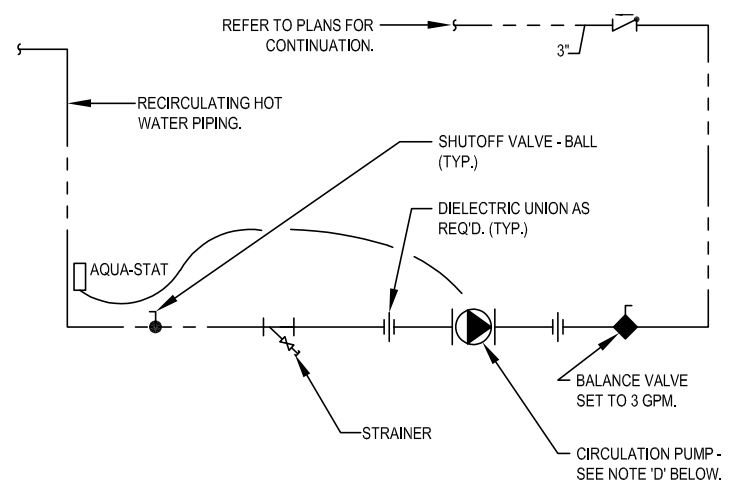
TITLE OF DRAWING
DETAILS

CONTRACT NUMBER:
TAS 25-9A

DATE:
09/12/2025

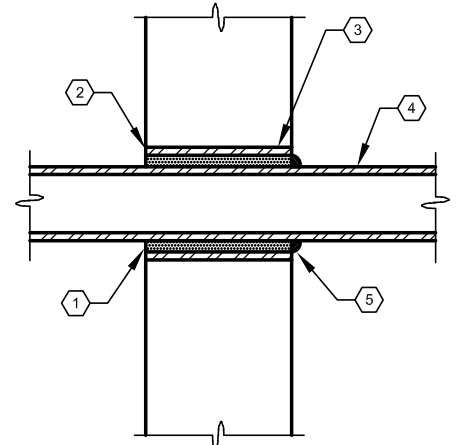
DRAWING NUMBER:
A800

THIS SHEET DOES NOT SUPERSEDE ANY SHEET



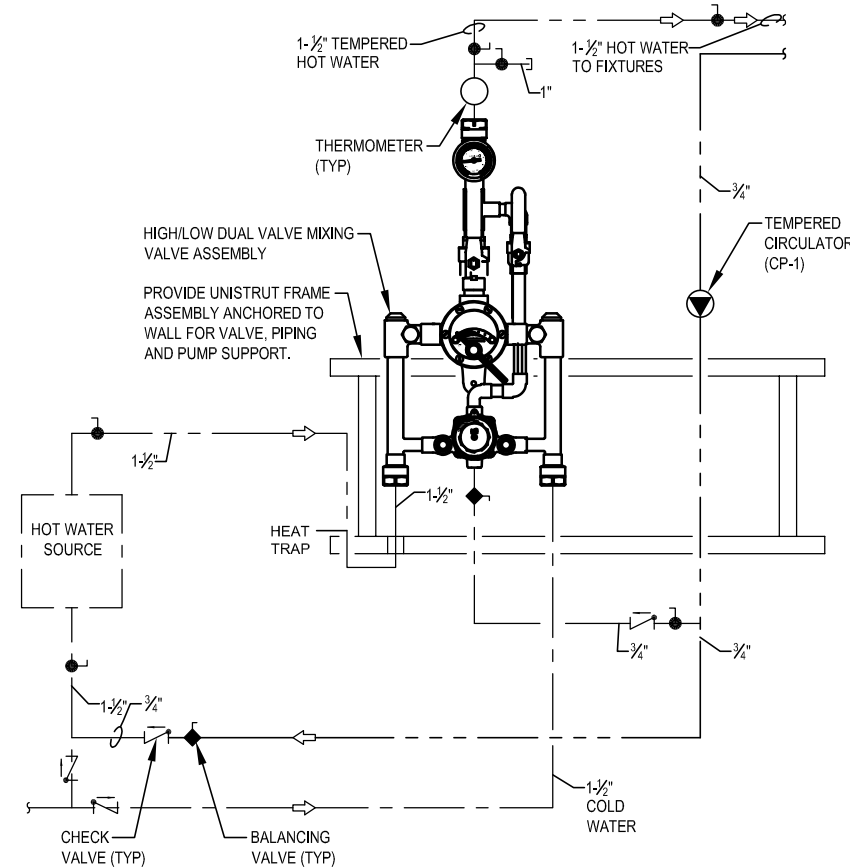
- NOTES:**
- A. PROVIDE PIPE SUPPORTS SIZED AND RATED FOR WEIGHT OF PIPING, FITTINGS, AND PUMP.
 - B. REFER TO PLANS FOR PIPE SIZES AND CONTINUATION.
 - C. FOLLOW MANUFACTURERS INSTALLATION INSTRUCTIONS.
 - D. REFER TO SCHEDULES ON DWG. P-501 FOR ADDITIONAL INFORMATION. COORDINATE POWER REQUIREMENTS WITH ELECTRICAL CONTRACTOR.
 - E. PROVIDE METAL CHANNEL STRUT BRACING AND PIPE HANGERS AS REQUIRED TO SUPPORT PUMP FROM WALL OR STRUCTURE ABOVE.

8 DOMESTIC HOT WATER RECIRCULATING PUMP (CP-1)
SCALE: NOT TO SCALE

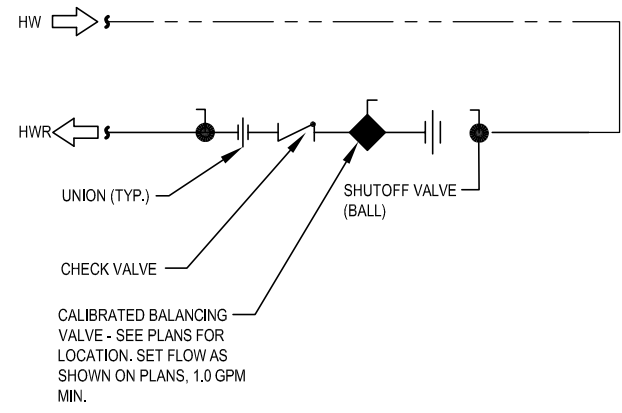


- KEYED NOTES:**
- 1. SEAL SLEEVE WITH MECHANICAL LINK SEAL.
 - 2. TERMINATE SLEEVE FLUSH WITH FINISHED WALL SURFACES.
 - 3. PIPE SLEEVE OF SIZE TO PASS OR CORE DRILLED HOLE.
 - 4. PIPE TO BE CENTERED IN SLEEVE - DO NOT SUPPORT PIPE FROM SLEEVE.
 - 5. COAT BELOW GRADE SURFACES WITH TAR COMPOUND.

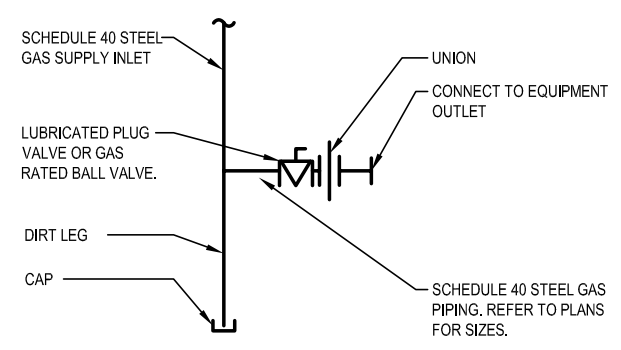
7 EXTERIOR WALL SLEEVE
SCALE: NOT TO SCALE



4 DOMESTIC HOT WATER MIXING VALVE
SCALE: NOT TO SCALE

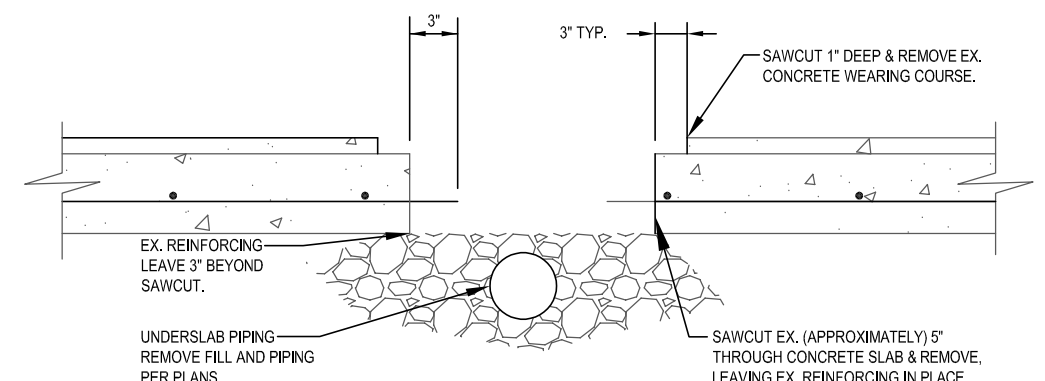


6 DOMESTIC HOT WATER BALANCING VALVE
SCALE: NOT TO SCALE

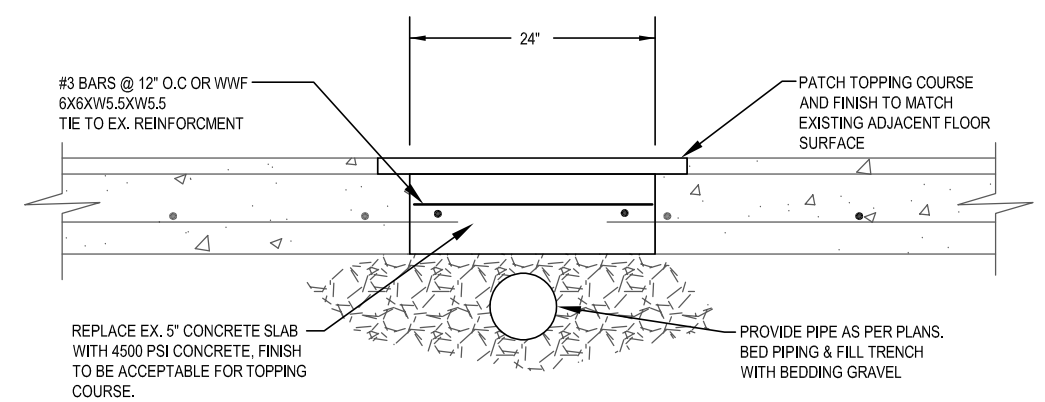


- NOTES:**
- 1. PROVIDE ENOUGH SPACE BELOW DIRT LEG FOR CAP REMOVAL.
 - 2. PROVIDE AT ALL GAS-FIRED MECHANICAL EQUIPMENT.

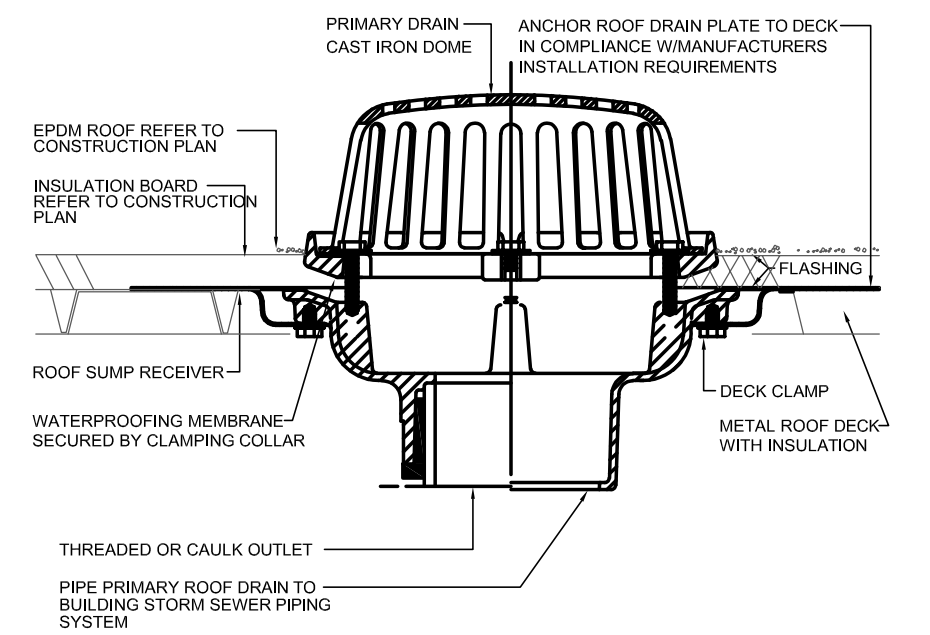
5 NATURAL GAS PIPE CONNECTION TO EQUIPMENT
SCALE: NOT TO SCALE



1 CONCRETE FLOOR DEMOLITION
SCALE: NOT TO SCALE



2 CONCRETE FLOOR REPAIR
SCALE: NOT TO SCALE



3 PRIMARY ROOF DRAIN
SCALE: NOT TO SCALE

ALTERED ON: 09/12/2025

AFFIXED ON: 09/12/2025

SIGNATURE: J.L. MORRIS

STAMP: STATE OF NEW YORK ANDREW SEAN TAYLOR LICENSED PROFESSIONAL ENGINEER 08 1132 EXP DATE: 04/20/2027

ARCHITECTURE ENGINEERING PLANNING CPLteam.com

AD AZAR DESIGN CO Architecture, Landscape Architecture, Engineering and Surveying, P.C.

IT IS A VIOLATION OF LAW FOR ANY PERSON, UNLESS THEY ARE ACTING UNDER THE DIRECTION OF A LICENSED PROFESSIONAL ENGINEER, ARCHITECT, LANDSCAPE ARCHITECT, OR LAND SURVEYOR, TO ALTER AN ITEM IN ANY WAY. IF AN ITEM BEARING THE STAMP OF A LICENSED PROFESSIONAL IS ALTERED, THE ALTERING ENGINEER, ARCHITECT, LANDSCAPE ARCHITECT, OR LAND SURVEYOR SHALL STAMP THE DOCUMENT AND INCLUDE THE NOTATION "ALTERED BY" FOLLOWED BY THEIR SIGNATURE, THE DATE OF SUCH ALTERATION, AND A SPECIFIC DESCRIPTION OF THE ALTERATION.

REVISIONS			
DATE	DESCRIPTION	BY	SYM.

NEW YORK STATE OF OPPORTUNITY

Thruway Authority

TITLE OF PROJECT ADDITIONS TO MAINTAINACE SECTION	CONTRACT NUMBER: TAS 25-9A
LOCATION OF PROJECT MANCHESTER MP 340.15	DATE: 09/12/2025
TITLE OF DRAWING PLUMBING DETAILS	DRAWING NUMBER: P500