

**NEW YORK STATE THRUWAY AUTHORITY  
DEPARTMENT OF ENGINEERING**

**ALBANY, NY  
JULY 10, 2025**

**AMENDMENT NO. 1  
TO**

**CONTRACT TAB 25-15**

**D215036**

**SAFETY IMPROVEMENTS AND MISCELLANEOUS WORK ON I-90  
FROM MP 467.00 TO MP 485.50 WB AND MP 467.00 TO MP 483.00 EB  
IN THE BUFFALO DIVISION  
OF THE NEW YORK STATE THRUWAY  
IN CHAUTAUQUA COUNTY**

**IN THE LETTING OF  
JULY 23, 2025**

---

**NOTE:** This amendment shall be attached to and become a part of the Proposal for Contract TAB 25-15.

**NOTICE**

For Electronic Bidders, the Project's amended EBSX file will automatically account for any necessary item changes (deletions, changes in quantities, or additions) that this Amendment may describe as being required regarding the project's estimated cost. Instructions to make physical changes to the Project Proposal's bid sheets are intended for "paper" Bidders who choose to submit bids via paper.

Questions and Answers for this project are available from the Authority's website, specifically at: [http://www.thruway.ny.gov/netdata/contractors/documents/d215036\\_tab25-15\\_questions-and-answers-07-10-2025.pdf](http://www.thruway.ny.gov/netdata/contractors/documents/d215036_tab25-15_questions-and-answers-07-10-2025.pdf). This document may be updated periodically without formal issuance of an Amendment. Prospective bidders are advised to revisit this link weekly and before proposals are due, for any possible additional questions and answers information.

**PROPOSAL**

1. **CHANGE** the estimated quantity for the following Items:

<u>Contract Proposal Page</u>	<u>Item No.</u>	<u>Description</u>	<u>Unit</u>	<u>Initial Estimated Quantity</u>	<u>Revised Estimated Quantity</u>
149	304.15	Subbase Course, Optional Type	CY	16	93

The "paper" Bidder shall **CROSS OUT** the estimated quantity shown for these items in the Contract Proposal, **WRITE IN** the revised estimated quantity, and submit its bid based on the noted changes. If the Bidder fails to make these changes, the Authority will do so and adjust the BID AMOUNT for the items and TOTAL BID, accordingly.

2. **ADD** the following Items:

<u>Contract Proposal Page</u>	<u>Item No.</u>	<u>Description</u>	<u>Unit</u>	<u>Estimated Quantity</u>
161A-A1	203.02	Unclassified Excavation and Disposal	CY	249
161A-A1	619.04	Type III Construction Barricade	EA	26
161A-A1	619.110512	(PVMS) Standard Size - Full Matrix (LED) No Optional Equipment Specified, Cellular Communications	EA	3
161A-A1	619.2401	Nighttime Operations (Each Location)	LS	1

The “paper” Bidder must **RETURN THE ATTACHED PAGES 161A-A1** with its bid for this Contract.

**PLANS**

3. **ADD** Drawing Number WZTC-05, Sheet 20A-A1 of 125. The Work Zone Traffic Control for the Nighttime Westbound Entrance Ramp Closure at Exit 59 is now available.
4. **ADD** Drawing Number WZTC-06, Sheet 20B-A1 of 125. The Work Zone Traffic Control for the Nighttime Westbound Exit Ramp Closure at Exit 59 is now available.
5. **ADD** Drawing Number MSD-1, Sheet 125A-A1 of 125. Miscellaneous details regarding the installation of the single slope concrete barrier is now available.

The Bidder **MUST** complete Page 175 of the Proposal acknowledging receipt of this amendment. If the Bidder fails to complete the “Amendment Acknowledgement” sheet, his bid could be declared informal thereby delaying award of the contract.

**PLEASE BE GOVERNED ACCORDINGLY WHEN SUBMITTING BIDS.**

**Brent E. Howard, P.E.**  
**Chief Engineer**



**Thruway  
Authority**

07/07/2025 11:44:13 AM

AASHTOWare Project™ Version 5.01.05 Revision 043

**Proposal Schedule of Items**

**Proposal ID:** D215036

**Project(s):** B53079

**Contractor:** \_\_\_\_\_

**SECTION:**

**Alt Set ID:**

**Alt Mbr ID:**

Proposal Line Number	Item ID Description	Approximate Quantity and Units	Unit Price		Bid Amount	
			Dollars	Cents	Dollars	Cents
0300	203.02 UNCLASSIFIED EXCAVATION AND DISPOSAL	249.000 CY	_____.	_____	_____.	_____
0302	619.04 TYPE III CONSTRUCTION BARRICADE	26.000 EACH	_____.	_____	_____.	_____
0304	619.110512 (PVMS) STANDARD SIZE - FULL MATRIX (LED) NO OPTIONAL EQUIPMENT SPECIFIED, CELLULAR COMMUNICATIONS	3.000 EACH	_____.	_____	_____.	_____
0306	619.2401 NIGHTTIME OPERATIONS (EACH LOCATION)	LUMP SUM	LUMP SUM		_____.	_____
			<b>Total:</b>		_____.	_____

Plotted By: sromeliser  
Design File: 66150258-PF 5501.dgn  
7/17/2025  
Checked By: J. JOHNS

DESIGNED BY: B. WALKER  
DESIGN SUPERVISOR: J. HOFMANN

CHECKED BY: B. WALKER

DRAFTED BY: S. ROMEISER

EXIT 59 ENTRANCE RAMP CLOSURE				
VMS SCHEDULE				
NAME LOCATION	PRE-CLOSURE		DURING CLOSURE	
	1ST PANEL	2ND PANEL	1ST PANEL	2ND PANEL
PVMS-1 I-90 WB NYRTE 60 EB	EXIT 59 WB ENTRANCE TO CLOSE	(DATE) XX PM - XX AM	EXIT 59 WB ENTRANCE CLOSED	USE ALTERNATE ROUTE
PVMS-2 I-90 WB NYRTE 60 WB	EXIT 59 WB ENTRANCE TO CLOSE	(DATE) XX PM - XX AM	EXIT 59 WB ENTRANCE CLOSED	USE ALTERNATE ROUTE
PVMS-3 I-90 WB VINEYARD DR	EXIT 59 WB ENTRANCE TO CLOSE	(DATE) XX PM - XX AM	EXIT 59 WB ENTRANCE CLOSED	USE ALTERNATE ROUTE
VMS-097 I-90 WB INT 59 RAMP	EXIT 59 WB ENTRANCE TO CLOSE	(DATE) XX PM - XX AM	EXIT 59 WB ENTRANCE CLOSED	USE ALTERNATE ROUTE


GENERAL SHEET NOTES:

- CONTRACTOR SHALL ONLY CLOSE EXIT 59 WB RAMPS OVERNIGHT.
- PVMS BOARDS SHALL INDICATE RAMP CLOSURE TWO WEEKS IN ADVANCE OF WORK. CONTRACTOR SHALL COORDINATE WITH THE THRUWAY AUTHORITY PRIOR TO CLOSING OF RAMPS.
- ALL SIGNS ARE BLACK ON ORANGE UNLESS DESIGNATED OTHERWISE.
- THE I-90 EXIT 59 WB ENTRANCE RAMP CLOSURE REQUIRES THE USE OF ALL PVMS AS PER THE "EXIT 59 WB ENTRANCE RAMP CLOSURE - PVMS SCHEDULE".
- THE CONTRACTOR SHALL PROVIDE PORTABLE LIGHTING, ITEM 619.2401 - NIGHTTIME OPERATIONS, AS NECESSARY.

PORTABLE VARIABLE MESSAGE SIGN NOTES:

- THE CONTRACTOR SHALL PROVIDE PORTABLE VARIABLE MESSAGE SIGNS TO BE USED FOR THE DURATION OF THIS CONTRACT, A.O.B.E. VARIABLE MESSAGE SIGNS ARE INTENDED TO SUPPLEMENT FIXED SIGNS AND ARE NOT INTENDED TO REPLACE THEM. VARIABLE MESSAGE SIGNS WILL BE PAID FOR UNDER ITEM 619.110512.
- THE CONTRACTOR SHALL SUPPLY AND INSTALL PORTABLE VARIABLE MESSAGE SIGNS AT LOCATIONS AS INDICATED ON THE PLANS. MESSAGING SHALL BE PER THE PLANS.
- LOCATIONS:
  - VARIABLE MESSAGE SIGNS SHALL BE PLACED WHERE THEY ARE VISIBLE TO TRAFFIC FROM AT LEAST 2,800 FEET AWAY BOTH DAY AND NIGHT.
  - VARIABLE MESSAGE SIGNS ARE TO BE PLACED BEYOND THE SHOULDER WHENEVER PRACTICAL.
- THE PORTABLE VARIABLE MESSAGE SIGNS SHALL BE LOCATED PER THE PLANS AND AS DEEMED NECESSARY BY THE ENGINEER AND THE NYSTA DIVISION TRAFFIC SUPERVISOR. ALTHOUGH PAYMENT IS PER SIGN, THE CONTRACTOR WILL BE REQUIRED TO MOVE THE SIGNS AS REQUESTED BY EITHER THE ENGINEER OR THE NYSTA DIVISION TRAFFIC SUPERVISOR. NO ADDITIONAL PAYMENT WILL BE MADE FOR SIGN MOVEMENTS.
- THE PROPER MESSAGE TEXT SHALL BE PER THE PLANS. MESSAGES DISPLAYED ON PVMS SHALL STATE SPECIFIC INFORMATION PERTAINING TO EITHER CURRENT CONDITIONS OR UPCOMING CHANGES THAT AFFECT TRAFFIC.
- UNLESS A UNIT WILL BE REACTIVATED LATER IN THE DAY AT THE SAME LOCATION, WHEN THE DISPLAYED MESSAGE IS NO LONGER NEEDED, AS DETERMINED BY THE ENGINEER, THE UNIT SHALL BE TURNED OFF AND THE DISPLAY TURNED 90 DEGREES FROM TRAFFIC. IN ADDITION, UNLESS LOCATED BEHIND AN EXISTING OR TEMPORARY BARRIER SYSTEM THAT WOULD PREVENT AN ERRANT VEHICLE FROM HITTING A PVMS, IT SHALL BE MOVED OUTSIDE THE CLEAR ZONE, AS DETERMINED BY THE ENGINEER, OR TO A SAFE STORAGE AREA APPROVED BY THE ENGINEER. IF DURING WORK HOURS THE ORIGINAL MESSAGE IS NO LONGER NECESSARY, BUT THE PVMS WILL STILL BE NEEDED LATER IN THE DAY AT THE SAME LOCATION, THE PVMS MAY BE PUT IN A STANDBY MODE IN LIEU OF MOVING IT. THE STANDBY MODE DISPLAY IS BLANK WITH NO TEXT OR CHARACTERS.



ALTERED ON: AFFIXED ON: 07/01/2025



LEGEND	
	CONSTRUCTION SIGN
	CHANNELIZING DEVICE
	ARROW PANEL
	EXISTING VMS SIGN
	PROPOSED PVMS SIGN
	TYPE III BARRICADE WITH LIGHTS

IT IS A VIOLATION OF LAW FOR ANY PERSON, UNLESS THEY ARE ACTING UNDER THE DIRECTION OF A LICENSED PROFESSIONAL ENGINEER, ARCHITECT, LANDSCAPE ARCHITECT, OR LAND SURVEYOR, TO ALTER AN ITEM IN ANY WAY. IF AN ITEM BEARING THE STAMP OF A LICENSED PROFESSIONAL IS ALTERED, THE ALTERING ENGINEER, ARCHITECT, LANDSCAPE ARCHITECT, OR LAND SURVEYOR SHALL STAMP THE DOCUMENT AND INCLUDE THE NOTATION "ALTERED BY" FOLLOWED BY THEIR SIGNATURE, THE DATE OF SUCH ALTERATION, AND A SPECIFIC DESCRIPTION OF THE ALTERATION.

REVISIONS			
DATE	DESCRIPTION	BY	SYM.



TITLE OF PROJECT  
ROADSIDE SAFETY IMPROVEMENTS

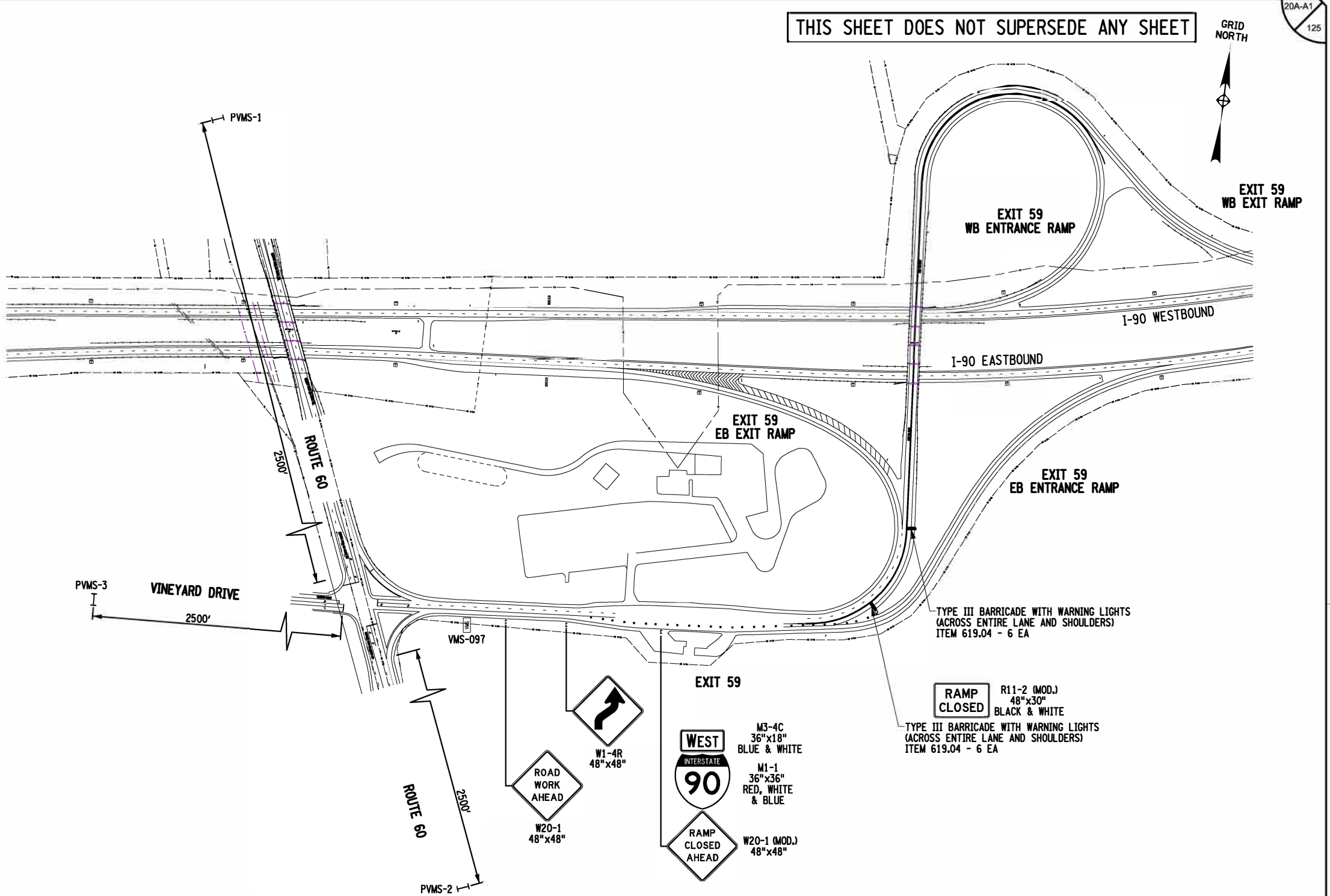
LOCATION OF PROJECT  
BUFFALO DIVISION  
MP 467.00 TO MP 485.50

TITLE OF DRAWING  
WORK ZONE TRAFFIC CONTROL  
EXIT 59 NIGHT TIME  
WESTBOUND ENTRANCE RAMP CLOSURE

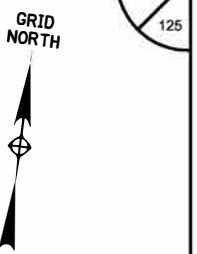
CONTRACT NUMBER:  
TAB 25-15

DATE:  
07/01/2025

DRAWING NUMBER:  
WZTC-05



THIS SHEET DOES NOT SUPERSEDE ANY SHEET

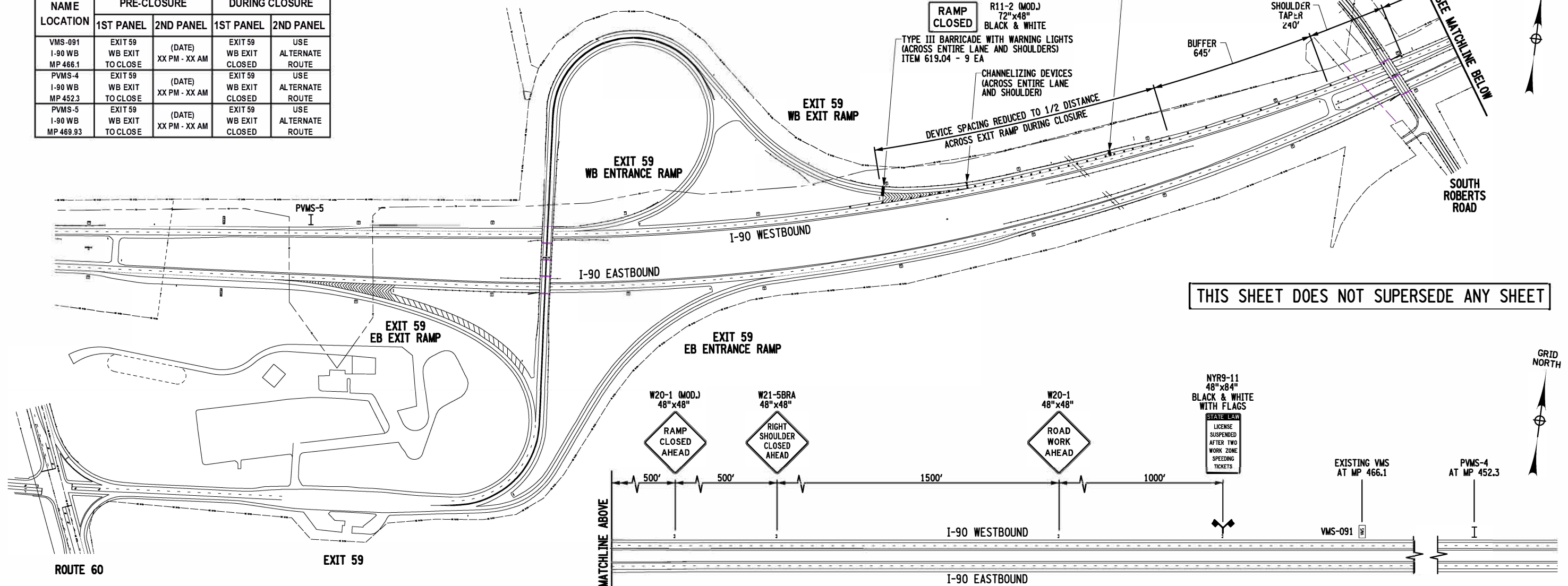


EXIT 59 WB ENTRANCE RAMP CLOSURE  
SHORT TERM NIGHTTIME CONSTRUCTION





EXIT 59 EXIT RAMP CLOSURE				
VMS SCHEDULE				
NAME LOCATION	PRE-CLOSURE		DURING CLOSURE	
	1ST PANEL	2ND PANEL	1ST PANEL	2ND PANEL
VMS-091 I-90 WB MP 466.1	EXIT 59 WB EXIT TO CLOSE	(DATE) XX PM - XX AM	EXIT 59 WB EXIT CLOSED	USE ALTERNATE ROUTE
PMVS-4 I-90 WB MP 452.3	EXIT 59 WB EXIT TO CLOSE	(DATE) XX PM - XX AM	EXIT 59 WB EXIT CLOSED	USE ALTERNATE ROUTE
PMVS-5 I-90 WB MP 469.93	EXIT 59 WB EXIT TO CLOSE	(DATE) XX PM - XX AM	EXIT 59 WB EXIT CLOSED	USE ALTERNATE ROUTE



GENERAL SHEET NOTES:

1. CONTRACTOR SHALL ONLY CLOSE EXIT 59 WB RAMPS OVERNIGHT.
2. PVMs BOARDS SHALL INDICATE RAMP CLOSURE TWO WEEKS IN ADVANCE OF WORK; CONTRACTOR SHALL COORDINATE WITH THE THRUWAY AUTHORITY PRIOR TO CLOSING OF RAMP(S).
3. ALL SIGNS ARE BLACK ON ORANGE UNLESS DESIGNATED OTHERWISE.
4. THE CONTRACTOR SHALL PROVIDE PORTABLE LIGHTING, ITEM 619.2401 - NIGHTTIME OPERATIONS, AS NECESSARY.

# EXIT 59 WB EXIT RAMP CLOSURE

## SHORT TERM NIGHTTIME CONSTRUCTION

IT IS A VIOLATION OF LAW FOR ANY PERSON, UNLESS THEY ARE ACTING UNDER THE DIRECTION OF A LICENSED PROFESSIONAL ENGINEER, ARCHITECT, LANDSCAPE ARCHITECT, OR LAND SURVEYOR, TO ALTER AN ITEM IN ANY WAY. IF AN ITEM BEARING THE STAMP OF A LICENSED PROFESSIONAL IS ALTERED, THE ALTERING ENGINEER, ARCHITECT, LANDSCAPE ARCHITECT, OR LAND SURVEYOR SHALL STAMP THE DOCUMENT AND INCLUDE THE NOTATION "ALTERED BY" FOLLOWED BY THEIR SIGNATURE, THE DATE OF SUCH ALTERATION, AND A SPECIFIC DESCRIPTION OF THE ALTERATION.

PORTABLE VARIABLE MESSAGE SIGN NOTES:

REVISIONS			
DATE	DESCRIPTION	BY	SY

TITLE OF PROJECT	ROADSIDE SAFETY IMPROVEMENTS
LOCATION OF PROJECT	BUFFALO DIVISION MP 467.00 TO MP 485.50
TITLE OF DRAWING	WORK ZONE TRAFFIC CONTROL EXIT 59 NIGHT TIME WESTBOUND EXIT RAMP CLOSURE

Plotted By: sromeliser  
Design File: 04US0258-PFF 5501denharded.projects\19281047341transportation\design\drawing\Phase 2\plans\MSD00214811-03\_coh\_med.125A-A1.dgn  
7/9/2025 9:40:46 AM

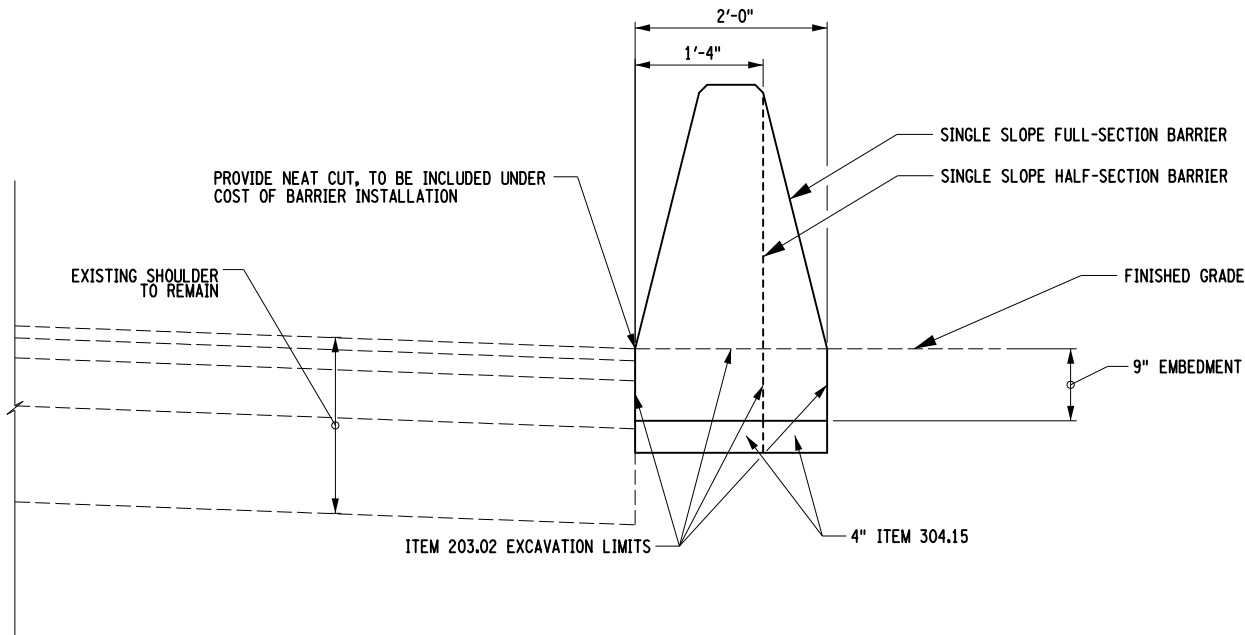
CHECKED BY: B. WALKER

DRAFTED BY: S. ROMEISER

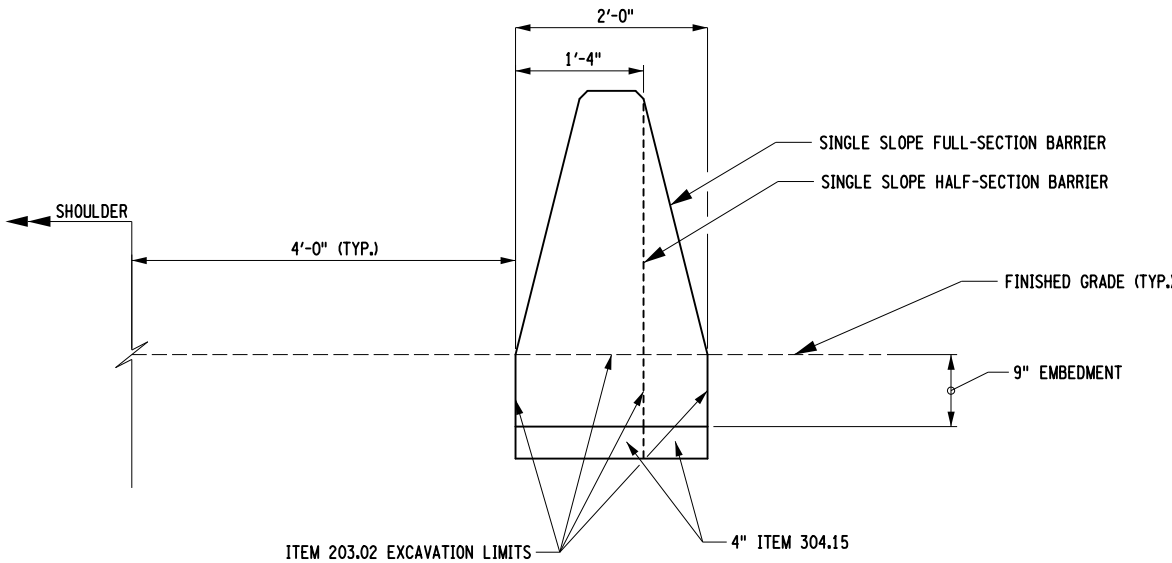
CHECKED BY: J. JOHNS

DESIGNED BY: B. WALKER

DESIGN SUPERVISOR: J. HOFMANN



SINGLE SLOPE CONCRETE BARRIER INSTALLATION SECTION  
ADJACENT SHOULDER, MP 468.2 EB  
N.T.S.



SINGLE SLOPE CONCRETE BARRIER INSTALLATION SECTION  
ROADSIDE AREA  
N.T.S.

**NOTE:**  
1. CONTRACTOR SHALL REFER TO DWGS, MST-1 TO MST-8 FOR SINGLE SLOPE CONCRETE BARRIER INSTALLATION LOCATIONS.

ALTERED ON: 07/01/2025	AFFIXED ON: 07/01/2025

IT IS A VIOLATION OF LAW FOR ANY PERSON, UNLESS THEY ARE ACTING UNDER THE DIRECTION OF A LICENSED PROFESSIONAL ENGINEER, ARCHITECT, LANDSCAPE ARCHITECT, OR LAND SURVEYOR, TO ALTER AN ITEM IN ANY WAY. IF AN ITEM BEARING THE STAMP OF A LICENSED PROFESSIONAL IS ALTERED, THE ALTERING ENGINEER, ARCHITECT, LANDSCAPE ARCHITECT, OR LAND SURVEYOR SHALL STAMP THE DOCUMENT AND INCLUDE THE NOTATION "ALTERED BY" FOLLOWED BY THEIR SIGNATURE, THE DATE OF SUCH ALTERATION, AND A SPECIFIC DESCRIPTION OF THE ALTERATION.

REVISIONS			
DATE	DESCRIPTION	BY	SYM.



TITLE OF PROJECT ROADSIDE SAFETY IMPROVEMENTS	CONTRACT NUMBER: TAB 25-15
LOCATION OF PROJECT BUFFALO DIVISION MP 467.00 TO MP 485.50	DATE: 07/01/2025
TITLE OF DRAWING MISCELLANEOUS DETAILS SINGLE SLOPE CONCRETE BARRIER INSTALLATION	DRAWING NUMBER: MSD-1