

**NEW YORK STATE THRUWAY AUTHORITY  
DEPARTMENT OF ENGINEERING**

**ALBANY, NY  
MAY 22, 2024**

**AMENDMENT NO. 3  
TO**

**CONTRACT TAS 24-20B  
D214978  
REPLACEMENT OF THE I-90 BRIDGE OVER  
ORISKANY BOULEVARD (NY 69) AT MILEPOST 238.22  
IN THE SYRACUSE DIVISION  
OF THE NEW YORK STATE THRUWAY  
IN ONEIDA COUNTY**

**IN THE LETTING OF  
MAY 29, 2024**

---

**NOTE:** This amendment shall be attached to and become a part of the Proposal for Contract **TAS 24-20B**.

**NOTICE**

For Electronic Bidders, the Project's amended EBSX file will automatically account for any necessary item changes (deletions, changes in quantities, or additions) that this Amendment may describe as being required regarding the project's estimated cost. Instructions to make physical changes to the Project Proposal's bid sheets are intended for "paper" Bidders who choose to submit bids via paper.

Questions and Answers for this project are available from the Authority's website, specifically at: [http://www.thruway.ny.gov/netdata/contractors/documents/d214978\\_tas24-20b\\_questions-and-answers-05-22-2024.pdf](http://www.thruway.ny.gov/netdata/contractors/documents/d214978_tas24-20b_questions-and-answers-05-22-2024.pdf). This document may be updated periodically without formal issuance of an Amendment. Prospective bidders are advised to revisit this link weekly and before proposals are due, for any possible additional questions and answers information.

Additional Supplemental Information for this project is now available from the Authority's website, specifically at: [http://www.thruway.ny.gov/netdata/contractors/documents/d214978\\_tas24-20b\\_supplemental-information-05-22-2024.zip](http://www.thruway.ny.gov/netdata/contractors/documents/d214978_tas24-20b_supplemental-information-05-22-2024.zip)

The revised quantity workup to reflect the change as mentioned below is now available and is being provided as additional supplemental information. Prospective bidders are advised to revisit the website weekly and before proposals are due, for any possible additional supplemental information.

**PROPOSAL**

1. **CHANGE** the estimated quantity for the following Item:

<u>Contract Proposal Page</u>	<u>Item No.</u>	<u>Description</u>	<u>Unit</u>	<u>Initial Estimated Quantity</u>	<u>Revised Estimated Quantity</u>
174	556.0203	Galvanized Bar Reinforcement for Structures	LB	54,500	100,000

The “paper” Bidder shall **CROSS OUT** the estimated quantity shown for these items in the Contract Proposal, **WRITE IN** the revised estimated quantity, and submit its bid based on the noted changes. If the Bidder fails to make these changes, the Authority will do so and adjust the BID AMOUNT for the items and TOTAL BID, accordingly.

**PLANS**

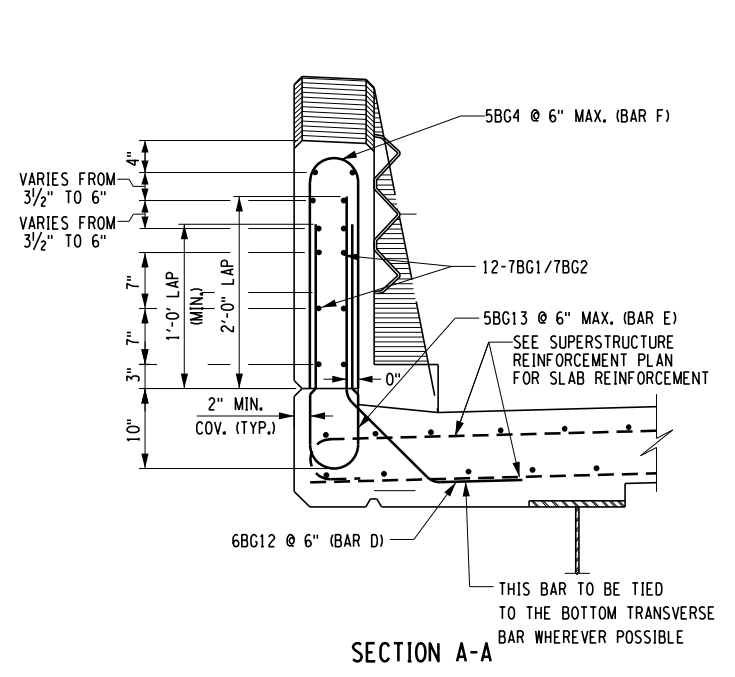
2. **DELETE** Drawing Number ST-51, Sheet 110 of 120, and **SUBSTITUTE** with the attached Drawing Number ST-51, Sheet 110-A3. Note 5 was revised to clarify payment of the reinforcement.
3. **DELETE** Drawing Numbers ST-60 and ST-61, Sheets 119 and 120 of 120, and **SUBSTITUTE** with the attached Drawing Numbers ST-60 and ST-61, Sheets 119-A3 and 120-A3, respectively. The Bar Lists were revised to include the appropriate item number for payment.

The Bidder **MUST** complete **Page 197** of the Proposal acknowledging receipt of this amendment. If the Bidder fails to complete the “Amendment Acknowledgement” sheet, his bid could be declared informal thereby delaying award of the contract.

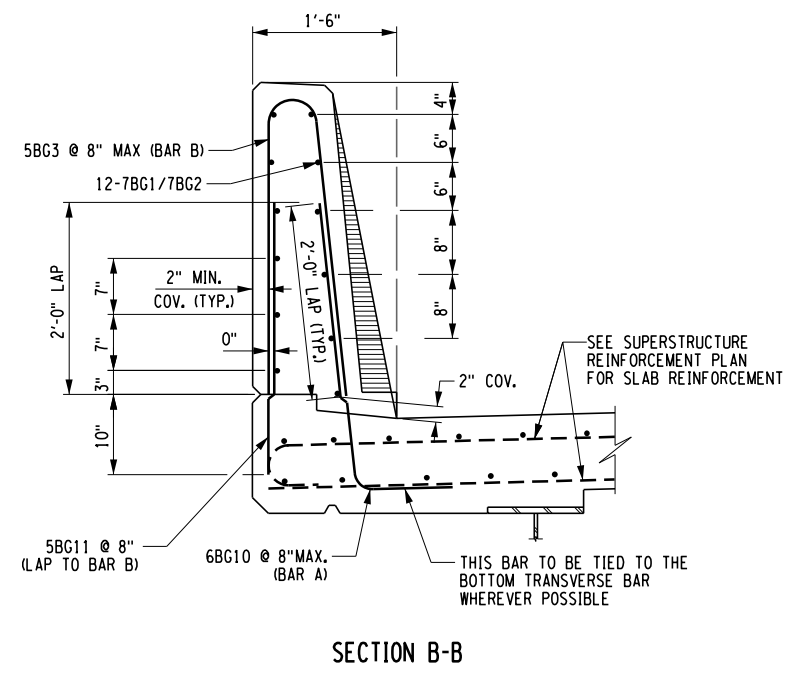
**PLEASE BE GOVERNED ACCORDINGLY WHEN SUBMITTING BIDS.**

**Brent E. Howard, P.E.**  
**Chief Engineer**

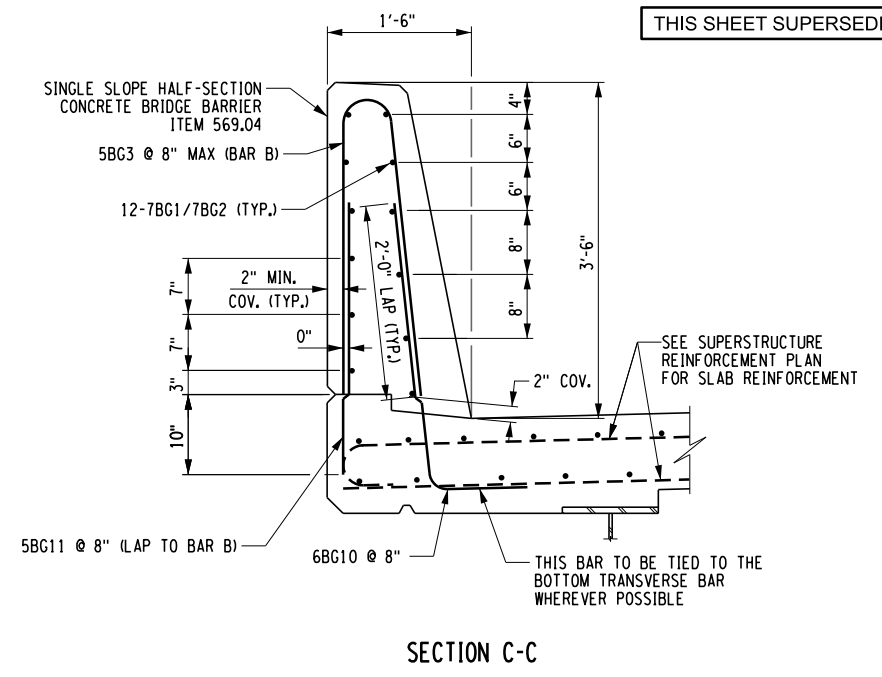
CHECKED BY: D. LEVINE  
DRAFTED BY: LITENIER  
CHECKED BY: J.P. O'LOUGHLIN  
DESIGNED BY: D. LEVINE  
DESIGN SUPERVISOR: D. LEVINE



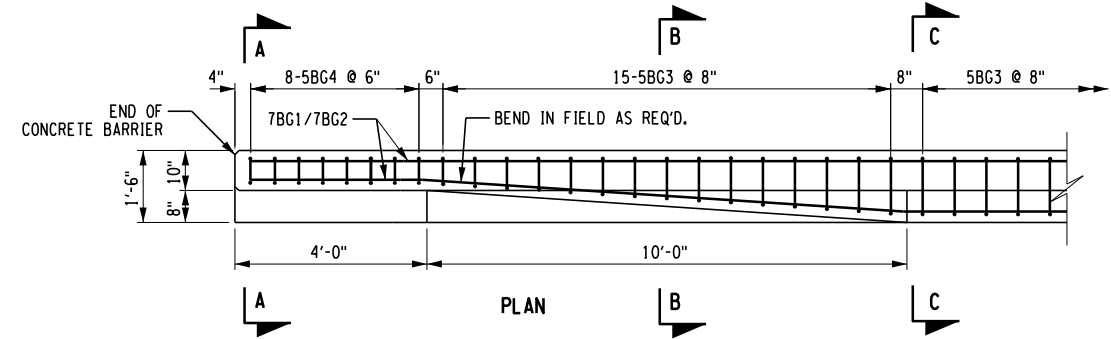
SECTION A-A



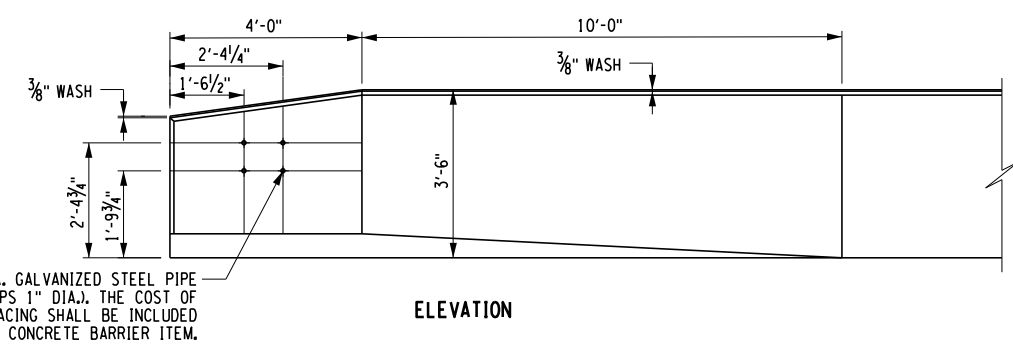
SECTION B-B



SECTION C-C



PLAN

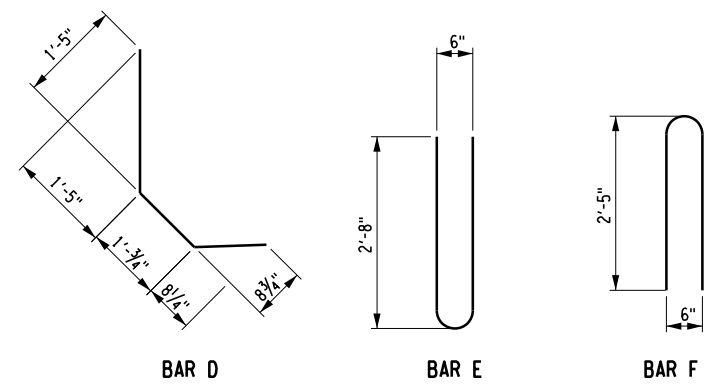


ELEVATION

CONCRETE BARRIER TRANSITION

NOTES:

- FOR DECK REINFORCEMENT AND ADDITIONAL OVERHANG REINFORCEMENT DETAILS. SEE DWGS. ST-44, ST-45, & ST-50.
- FOR ADDITIONAL INFORMATION REGARDING THE DOWELS EXTENDING INTO THE CONCRETE BRIDGE BARRIER FROM THE SUPERSTRUCTURE SLAB, SEE BARRIER DETAIL ON DWG. ST-50.
- FOR SINGLE SLOPE (HALF-SECTION) CONCRETE BRIDGE BARRIER REINFORCEMENT BAR LIST, SEE DWG. ST-60.
- FOR DETAILS OF THE PROTECTIVE SCREEN SNOW FENCE TO BE MOUNTED TO THE OUTSIDE FENCE OF THE CONCRETE BRIDGE BARRIER, SEE DWG. ST-52.
- BAR REINFORCEMENT SHALL MEET THE REQUIREMENTS OF STANDARD SPECIFICATION SECTION 556 FOR GALVANIZED REINFORCEMENT. COST OF BARRIER REINFORCEMENT, INCLUDING DOWELS THAT ARE PLACED IN THE SUPERSTRUCTURE SLAB, IS INCLUDED IN THE COST OF ITEM 569.04.



ITEM 569.04 SINGLE SLOPE (HALF-SECTION) CONCRETE BRIDGE BARRIER			
LOCATION	BEGIN STA.	END STA.	QUANTITY (LF)
WEST FASCIA	WB STA 15+24.50	WB STA 16+47.50	123
EAST FASCIA	EB STA 15+24.50	EB STA 16+47.50	123

NOTE:  
STATIONS PROVIDED AT EXTERIOR FACE OF BARRIER

ALTERED ON: \_\_\_\_\_ AFFIXED ON: 05/22/2024

SIGNATURE: \_\_\_\_\_ STAMP: \_\_\_\_\_

SIGNATURE: Daniel A. Levine STAMP: \_\_\_\_\_

IT IS A VIOLATION OF LAW FOR ANY PERSON, UNLESS THEY ARE ACTING UNDER THE DIRECTION OF A LICENSED PROFESSIONAL ENGINEER, ARCHITECT, LANDSCAPE ARCHITECT, OR LAND SURVEYOR, TO ALTER AN ITEM IN ANY WAY. IF AN ITEM BEARING THE STAMP OF A LICENSED PROFESSIONAL IS ALTERED, THE ALTERING ENGINEER, ARCHITECT, LANDSCAPE ARCHITECT, OR LAND SURVEYOR SHALL STAMP THE DOCUMENT AND INCLUDE THE NOTATION "ALTERED BY" FOLLOWED BY THEIR SIGNATURE, THE DATE OF SUCH ALTERATION, AND A SPECIFIC DESCRIPTION OF THE ALTERATION.

REVISIONS			
DATE	DESCRIPTION	BY	SYL.

TITLE OF PROJECT REPLACEMENT OF I-90 BRIDGE OVER ORISKANY BOULEVARD	CONTRACT NUMBER: TAS 24-20B
LOCATION OF PROJECT SYRACUSE DIVISION MP 238.22	DATE: 04/03/2024
TITLE OF DRAWING CONCRETE BARRIER PLAN AND DETAILS (SHEET 2 OF 2)	DRAWING NUMBER: ST-51

M.P. 238.22, BIN 5009929

MARK	QTY	SIZE	LENGTH	TYPE	WEIGHT	A	B	C	D	E	F	G	H/H1	H2	J	K	L	O	R	REMARKS
<b>BEGIN ABUTMENT</b>																				
<b>PLACEMENT - LOWER STEM (PAID FOR UNDER ITEM 556.0203)</b>																				
9AG1	242	9	16'-9"	2	13815	2'-8"	14'-1"					0'-0"						0'-0"		LENGTH VARIES DUE TO CROSS SLOPE
6AG3	38	6	40'-0"	STR	2284													40'-0"		
6AG4	38	6	23'-2"	STR	1323													23'-2"		
5AG5	121	5	7'-4"	17	926		2'-4"	2'-8"	2'-4"											
9AG6	40	9	7'-4"	17	784		2'-4"	2'-8"	2'-4"											
5AG12	8	5	14'-4"	STR	307													14'-4"		
5AG13	16	5	7'-4"	17	314		2'-4"	2'-8"	2'-4"											
SUBTOTAL					16132															
<b>PLACEMENT - UPPER STEM (PAID FOR UNDER ITEM 556.0203)</b>																				
6AG3	16	6	40'-0"	STR	962													40'-0"		
6AG4	16	6	23'-2"	STR	557													23'-2"		
5AG5	121	5	7'-4"	17	926		2'-4"	2'-8"	2'-4"											
5AG7	45	5	4'-3"	1	200	0'-6"	3'-3"					0'-6"								INTO APPROACH SLAB
5AG8	91	5	8'-6"	2	807	5'-6"	3'-0"													FF ABUT INTO BOTTOM OF SUP. SLAB
5AG9	91	5	27'-3"	2	2583	2'-7"	24'-8"													RF ABUT INTO TOP OF SUP. SLAB
5AG10	1	5	40'-0"	STR	42													40'-0"		
5AG11	1	5	22'-11"	STR	24													22'-11"		
5AG13	16	5	7'-4"	17	314		2'-4"	2'-8"	2'-4"											
SUBTOTAL					6101															
TOTAL (EB & WB)					44466															

MARK	QTY	SIZE	LENGTH	TYPE	WEIGHT	A	B	C	D	E	F	G	H/H1	H2	J	K	L	O	R	REMARKS
<b>END ABUTMENT</b>																				
<b>PLACEMENT - LOWER STEM (PAID FOR UNDER ITEM 556.0203)</b>																				
9AG2	242	9	16'-2"	2	10427	2'-8"	13'-6"					0'-0"						0'-0"		LENGTH VARIES DUE TO CROSS SLOPE
6AG3	36	6	40'-0"	STR	2163													40'-0"		
6AG4	36	6	23'-2"	STR	1253													23'-2"		
5AG5	121	5	7'-4"	17	926		2'-4"	2'-8"	2'-4"											
9AG6	40	9	7'-4"	17	784		2'-4"	2'-8"	2'-4"											
5AG12	8	5	13'-9"	STR	294													13'-9"		
5AG13	16	5	7'-4"	17	314		2'-4"	2'-8"	2'-4"											
SUBTOTAL					15553															
<b>PLACEMENT - UPPER STEM (PAID FOR UNDER ITEM 556.0203)</b>																				
6AG3	16	6	40'-0"	STR	962													40'-0"		
6AG4	16	6	23'-2"	STR	557													23'-2"		
5AG5	121	5	7'-4"	17	926		2'-4"	2'-8"	2'-4"											
5AG7	45	5	4'-3"	1	200	0'-6"	3'-3"					0'-6"								INTO APPROACH SLAB
5AG8	91	5	8'-6"	2	807	5'-6"	3'-0"													FF ABUT INTO BOTTOM OF SUP. SLAB
5AG9	91	5	27'-3"	2	2583	2'-7"	24'-8"													RF ABUT INTO TOP OF SUP. SLAB
5AG10	1	5	40'-0"	STR	42													40'-0"		
5AG11	1	5	22'-11"	STR	24													22'-11"		
5AG13	16	5	7'-4"	17	314		2'-4"	2'-8"	2'-4"											
SUBTOTAL					6101															
TOTAL (EB & WB)					43308															


MARK	QTY	SIZE	LENGTH	TYPE	WEIGHT	A	B	C	D	E	F	G	H/H1	H2	J	K	L	O	R	REMARKS
<b>WINGWALL</b>																				
<b>PLACEMENT - FOOTING POUR (PAID FOR UNDER ITEM 556.0203)</b>																				
5WG1	16	5	20'-7"	STR	344													20'-7"		LENGTH VARIES, AVERAGE LENGTH USED
6WG2	36	6	7'-0"	STR	379													7'-0"		
6WG3	14	6	8'-1"	STR	170													8'-1"		LENGTH VARIES, AVERAGE LENGTH USED
SUBTOTAL					893															

CHECKED BY: D. LEVINE

DRAFTED BY: I. TESNER

CHECKED BY: D. LEVINE

DESIGNED BY: J.P. O'LOUGHLIN

ALTERED ON:	AFFIXED ON: 05/22/2024
SIGNATURE: STAMP:	SIGNATURE: Daniel A. Levine STAMP: 

IT IS A VIOLATION OF LAW FOR ANY PERSON, UNLESS THEY ARE ACTING UNDER THE DIRECTION OF A LICENSED PROFESSIONAL ENGINEER, ARCHITECT, LANDSCAPE ARCHITECT, OR LAND SURVEYOR, TO ALTER AN ITEM IN ANY WAY. IF AN ITEM BEARING THE STAMP OF A LICENSED PROFESSIONAL IS ALTERED, THE ALTERING ENGINEER, ARCHITECT, LANDSCAPE ARCHITECT, OR LAND SURVEYOR SHALL STAMP THE DOCUMENT AND INCLUDE THE NOTATION "ALTERED BY" FOLLOWED BY THEIR SIGNATURE, THE DATE OF SUCH ALTERATION, AND A SPECIFIC DESCRIPTION OF THE ALTERATION.

REVISIONS			
DATE	DESCRIPTION	BY	SYM.



**Thruway Authority**



TITLE OF PROJECT REPLACEMENT OF I-90 BRIDGE OVER ORISKANY BOULEVARD	CONTRACT NUMBER: TAS 24-20B
LOCATION OF PROJECT SYRACUSE DIVISION MP 238.22	DATE: 04/03/2024
TITLE OF DRAWING BAR LIST (SHEET 1 OF 2)	DRAWING NUMBER: ST-60

M.P. 238.22, BIN 5009929

PLACEMENT - STEM POUR (PAID FOR UNDER ITEM 556.0203)																						
5WG4	20	5	11'-10"	17	248		1'-2"	10'-8"	0'-0"													LENGTH VARIES, AVERAGE LENGTH USED
6WG5	38	6	12'-1"	17	692		1'-5"	10'-8"	0'-0"													LENGTH VARIES, AVERAGE LENGTH USED
6WG6	4	6	16'-7"	17	100		1'-5"	15'-2"	0'-0"													
5WG7	5	5	16'-4"	17	86		1'-2"	15'-2"	0'-0"													
5WG8	6	5	22'-11"	N12	144		18'-10"	1'-8"	0'-0"			1'-2"								1'-3"		
5WG9	6	5	23'-2"	N12	146		21'-4"	0'-9"	0'-0"			0'-6"								0'-6"		
5WG10	11	5	13'-6"	N12	155		9'-5"	1'-8"	0'-0"			1'-2"								1'-3"		LENGTH VARIES, AVERAGE LENGTH USED
5WG11	11	5	13'-10"	N12	159		12'-0"	0'-9"	0'-0"			0'-6"								0'-6"		LENGTH VARIES, AVERAGE LENGTH USED
5WG12	16	5	6'-9"	N10	113		1'-6"	2'-8"	0'-3"	2'-4"		0'-10"								0'-10"		
5WG13	1	5	23'-11"	12	25	0'-0"	0'-0"	2'-10"	21'-1"			0'-0"								0'-0"		PERIMETER
SUBTOTAL					1868																	
TOTAL (BAR/EAL & BAL/EAR)					11044																	

MARK	QTY	SIZE	LENGTH	TYPE	WEIGHT	A	B	C	D	E	F	G	H/H1	H2	J	K	L	O	R	REMARKS
------	-----	------	--------	------	--------	---	---	---	---	---	---	---	------	----	---	---	---	---	---	---------

SUPERSTRUCTURE SLAB																					
PLACEMENT - SUPERSTRUCTURE SLAB (PAID FOR UNDER ITEM 557.1119)																					
4SG1	122	4	40'-0"	1	3260	0'-6"	39'-2"					0'-0"								0'-4"	LAPPED TO 4SG2
4SG2	122	4	23'-9"	1	1937	0'-6"	22'-11"					0'-0"								0'-4"	LAPPED TO 4SG1
4SG3	122	4	40'-0"	STR	3260															40'-0"	LAPPED TO 4SG4
4SG4	122	4	22'-1"	STR	1802															22'-1"	LAPPED TO 4SG3
4SG5	528	4	40'-0"	STR	14109															40'-0"	
4SG6	176	4	7'-2"	STR	843															7'-2"	
5SG7	36	5	40'-0"	STR	1502															40'-0"	
5SG8	12	5	9'-8"	STR	121															9'-8"	
6SG9	244	6	6'-2"	1	2261	0'-8"	5'-6"					0'-0"							0'-6"		
4SG14	8	4	3'-8"	12	20			1'-8"	2'-0"				1'-5"						1'-5"	3'-1"	CORNER DETAIL BAR
SUBTOTAL					29115																

PLACEMENT - BARRIER REINFORCEMENT EMBEDDED IN DECK (PAID FOR UNDER ITEM 569.04)																					
6BG10	174	6	4'-1"	A	1068																VARIES IN BARRIER TRANSITION
5BG11	174	5	3'-0"	STR	545															3'-0"	
6BG12	16	6	4'-2"	D	101																
5BG13	16	5	6'-2"	E	103																
SUBTOTAL (EACH BARRIER)					1817																
SUBTOTAL (EACH SLAB)					30932																
SUPERSTRUCTURE SLAB TOTAL (2 SLABS)					61864																

MARK	QTY	SIZE	LENGTH	TYPE	WEIGHT	A	B	C	D	E	F	G	H/H1	H2	J	K	L	O	R	REMARKS
------	-----	------	--------	------	--------	---	---	---	---	---	---	---	------	----	---	---	---	---	---	---------

PLACEMENT - APPROACH SLAB (PAID FOR UNDER ITEM 557.1019)																					
5HG1	178	5	23'-0"	STR	4271															23'-0"	
5HG2	48	5	40'-0"	STR	2003															40'-0"	
5HG3	48	5	20'-11"	STR	1049															20'-11"	
SUBTOTAL (EACH SLAB)					7323																
APPROACH SLAB TOTAL (4 SLABS)					29292																
PLACEMENT - SLEEPER SLAB (PAID FOR UNDER ITEM 557.1019)																					
5HG2	16	5	40'-0"	STR	668															40'-0"	
5HG3	16	5	20'-11"	STR	350															20'-11"	
5HG4	120	5	5'-6"	STR	689															5'-6"	
5HG5	60	5	4'-6"	17	282		1'-6"	1'-6"	1'-6"												
SUBTOTAL (EACH SLAB)					1989																
SLEEPER SLAB TOTAL (4 SLABS)					7956																

MARK	QTY	SIZE	LENGTH	TYPE	WEIGHT	A	B	C	D	E	F	G	H/H1	H2	J	K	L	O	R	REMARKS
------	-----	------	--------	------	--------	---	---	---	---	---	---	---	------	----	---	---	---	---	---	---------

PLACEMENT - SINGLE SLOPE CONCRETE BARRIER (PAID FOR UNDER ITEM 569.04)																					
7BG1	36	7	40'-0"	STR	2944															0'-0"	
7BG2	12	7	9'-8"	STR	238															40'-0"	
5BG3	174	5	6'-7"	B	1188																VARIES IN BARRIER TRANSITION
5BG4	16	5	5'-8"	F	94																
SUBTOTAL (EACH BARRIER)					4464																
BARRIER TOTAL (EB & WB)					8928																


CHECKED BY: D. LEVINE

DRAFTED BY: I. TESNER

CHECKED BY: D. LEVINE

DESIGNED BY: J.P. O'LOUGHLIN

DESIGN SUPERVISOR: D. LEVINE

ALTERED ON:	AFFIXED ON: 05/22/2024
SIGNATURE: STAMP:	SIGNATURE: Daniel A. Levine 

IT IS A VIOLATION OF LAW FOR ANY PERSON, UNLESS THEY ARE ACTING UNDER THE DIRECTION OF A LICENSED PROFESSIONAL ENGINEER, ARCHITECT, LANDSCAPE ARCHITECT, OR LAND SURVEYOR, TO ALTER AN ITEM IN ANY WAY. IF AN ITEM BEARING THE STAMP OF A LICENSED PROFESSIONAL IS ALTERED, THE ALTERING ENGINEER, ARCHITECT, LANDSCAPE ARCHITECT, OR LAND SURVEYOR SHALL STAMP THE DOCUMENT AND INCLUDE THE NOTATION "ALTERED BY" FOLLOWED BY THEIR SIGNATURE, THE DATE OF SUCH ALTERATION, AND A SPECIFIC DESCRIPTION OF THE ALTERATION.

REVISIONS			
DATE	DESCRIPTION	BY	SYM.





TITLE OF PROJECT REPLACEMENT OF I-90 BRIDGE OVER ORISKANY BOULEVARD	CONTRACT NUMBER: TAS 24-20B
LOCATION OF PROJECT SYRACUSE DIVISION MP 238.22	DATE: 04/03/2024
TITLE OF DRAWING BAR LIST (SHEET 2 OF 2)	DRAWING NUMBER: ST-61

M.P. 238.22, BIN 5009929