

NEW YORK STATE THRUWAY AUTHORITY
DEPARTMENT OF ENGINEERING

ALBANY, NY
MAY 20, 2024

AMENDMENT NO. 2
TO

CONTRACT TAS 24-20B
D214978
REPLACEMENT OF THE I-90 BRIDGE OVER
ORISKANY BOULEVARD (NY 69) AT MILEPOST 238.22
IN THE SYRACUSE DIVISION
OF THE NEW YORK STATE THRUWAY
IN ONEIDA COUNTY

IN THE LETTING OF
MAY 29, 2024

NOTE: This amendment shall be attached to and become a part of the Proposal for Contract **TAS 24-20B**.

PLANS

1. **DELETE** Drawing ST-6, Sheet 67, and **SUBSTITUTE** with the attached Drawing ST-8, Sheet 67A2.
Note 3 was revised to require a minimum section modulus of 78.00 in³/ft instead of 89.28 in³/ft for the steel sheet piling.

The Bidder **MUST** complete Page **197** of the Proposal acknowledging receipt of this amendment. If the Bidder fails to complete the “Amendment Acknowledgement” sheet, his bid could be declared informal thereby delaying award of the contract.

PLEASE BE GOVERNED ACCORDINGLY WHEN SUBMITTING BIDS.

Brent E. Howard, P.E.
Chief Engineer

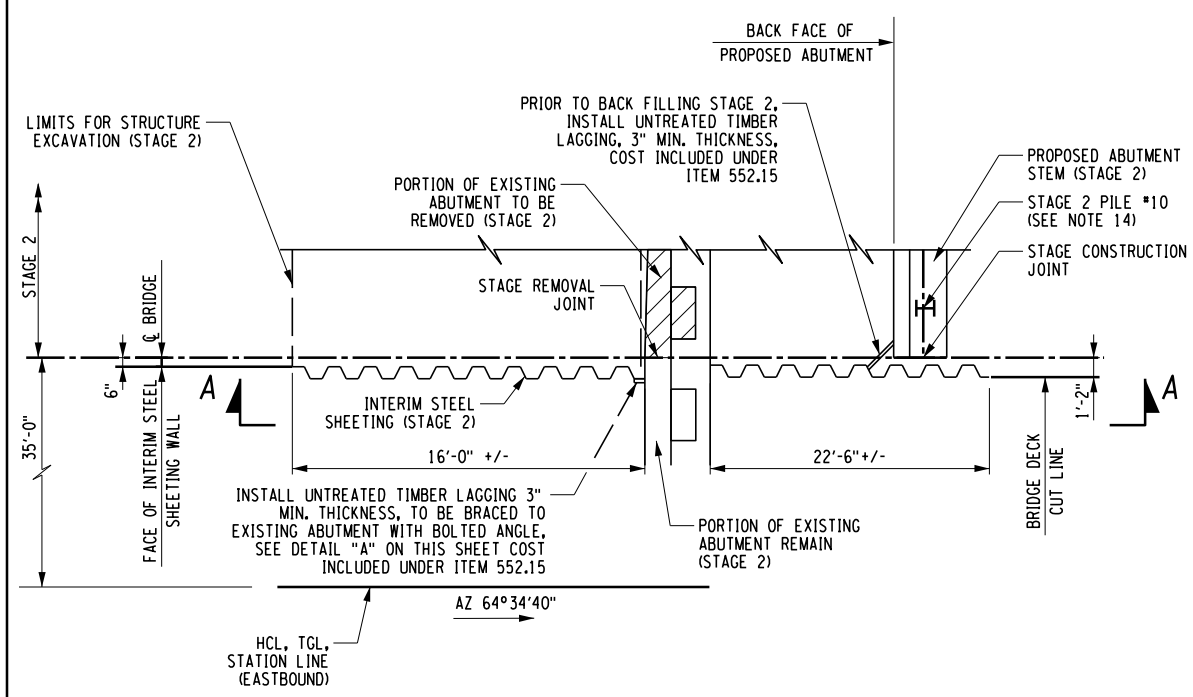
CHECKED BY: D. LEVINE

DRAFTED BY: LITNESER

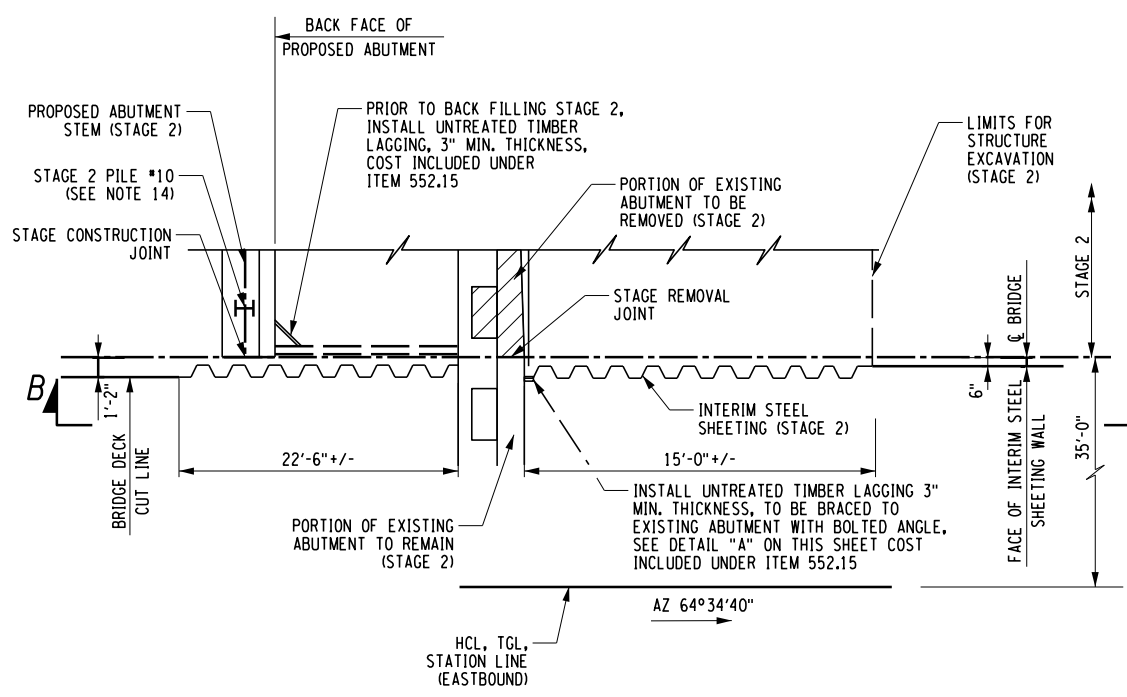
CHECKED BY: D. LEVINE

DESIGNED BY: J.P. O'LOUGHLIN

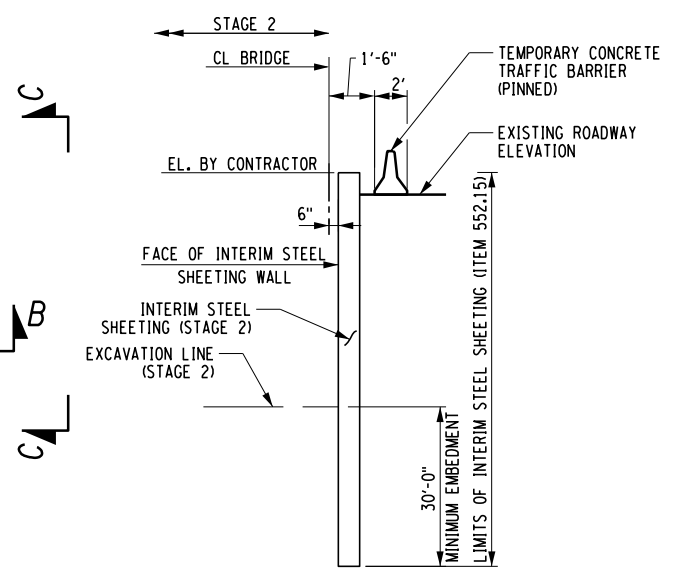
DESIGN SUPERVISOR: D. LEVINE



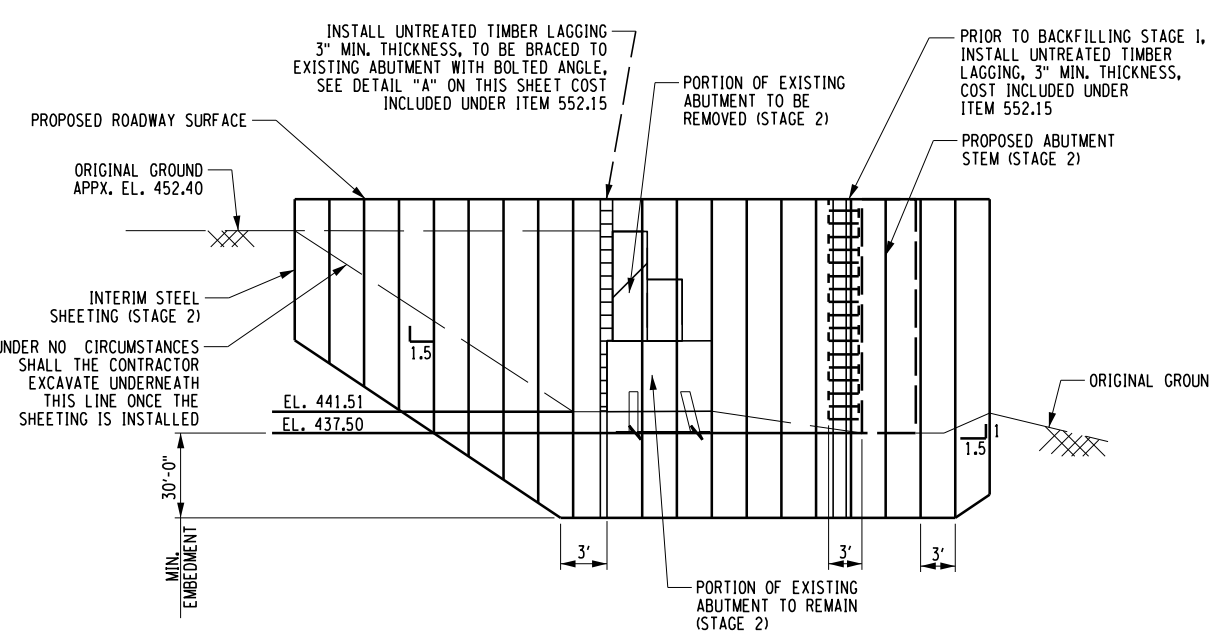
STAGE 2 INTERIM STEEL SHEETING WALL (BEGIN ABUTMENT)
NOT TO SCALE



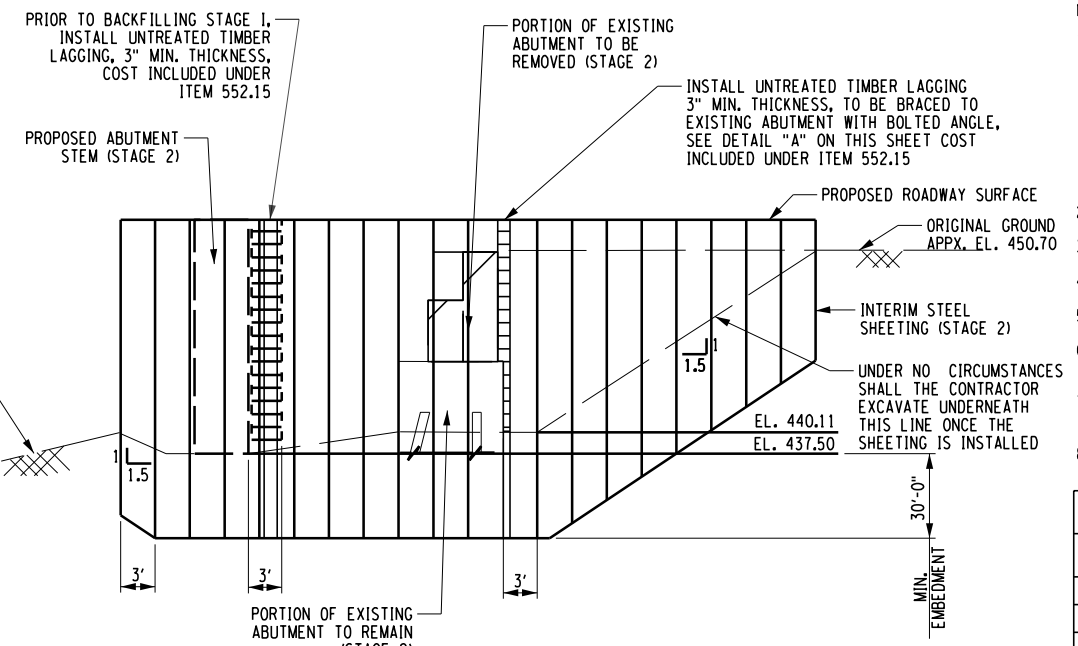
STAGE 2 INTERIM STEEL SHEETING WALL (END ABUTMENT)
NOT TO SCALE



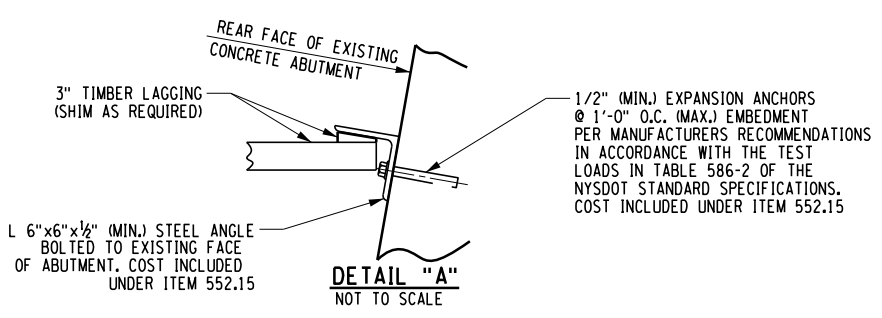
SECTION C-C - INTERIM STEEL SHEETING WALL
NOT TO SCALE



ELEVATION A-A - STAGE 2 INTERIM STEEL SHEETING WALL (BEGIN ABUTMENT)
NOT TO SCALE



ELEVATION B-B - STAGE 2 INTERIM STEEL SHEETING WALL (END ABUTMENT)
NOT TO SCALE



DETAIL "A"
NOT TO SCALE

- NOTES:
- THE CONTRACTOR MAY PROPOSE AN ALTERNATE METHOD OF CONSTRUCTION SUPPORT. ANY ALTERNATE METHODS PROPOSED MUST BE AT NO ADDITIONAL COST TO THE AUTHORITY, DESIGNED FOR THE ANTICIPATED CONSTRUCTION LOADING, DESIGNED AND STAMPED BY A PROFESSIONAL ENGINEER ACTIVELY PRACTICING AND LICENSED IN THE STATE OF NEW YORK, AND BE SUBMITTED TO THE AUTHORITY/OWNER AND THE EIC FOR REVIEW AND APPROVAL. APPROVAL OF ANY ALTERNATE METHODS OF CONSTRUCTION SUPPORT ARE AT THE DISCRETION OF THE EIC AND THE AUTHORITY/OWNER. NO ALTERNATE METHODS OF EXCAVATION SUPPORT SHALL BE IMPLEMENTED WITHOUT PRIOR APPROVAL FROM THE EIC AND AUTHORITY/OWNER.
 - THE STEEL SHEETING SHALL CONFORM TO ASTM A572, GRADE 50.
 - THE MINIMUM SECTION MODULUS OF THE STEEL SHEETING SHALL BE 78.00 IN³/FT.
 - THE MAXIMUM DEPTH OF EXCAVATION FOR THE STEEL SHEETING IS 15 FEET.
 - THE MINIMUM EMBEDMENT LENGTH FOR THE STEEL SHEETING IS 30 FEET.
 - COLD-FORMED STEEL SHEETING MAY BE USED FOR THE INTERIM STEEL SHEETING AT THE BEGIN AND END ABUTMENTS.
 - CUT OFF THE INTERIM SHEETING, ITEM 552.15, TWO FEET BELOW SUBGRADE SURFACE.
 - THE FOLLOWING INFORMATION WAS USED IN THE DESIGN OF THE INTERIM STEEL SHEETING WALLS.

INTERIM STEEL SHEETING WALL DESIGN INFORMATION TABLE				
LOCATION	ELEVATION (FT)	UNIT WEIGHT (PCF)	FRICTION ANGLE (DEGREES)	COHESION (PSF)
BEGIN & END ABUTMENT	OGS-433	115	33	0
BEGIN & END ABUTMENT	433-425	110	32	0
BEGIN & END ABUTMENT	425-417	110	30	0
BEGIN & END ABUTMENT	417-400	130	40	0

- THE PASSIVE EARTH PRESSURE COEFFICIENT (kp) WAS DIVIDED BY 1.25
- GROUNDWATER WAS ASSUMED AT ELEVATION 429 FEET.
 - A SURFACE LOAD OF 250 PSF WAS APPLIED AT THE TOP OF THE WALL.
 - BORINGS WERE TAKEN TO AN ELEVATION OF 382 FT. BEDROCK WAS NOT ENCOUNTERED.
 - CONTRACTOR SHALL TAKE NOTICE OF THE PROXIMITY OF PILES (BEGIN AND END ABUTMENT) TO THE INTERIM SHEETING WALL. CONTRACTOR IS RESPONSIBLE FOR AVOIDING CONFLICTS BETWEEN THE INTERIM SHEETING WALL AND THE INTEGRAL ABUTMENT PILES.
 - DETAILS ON THE DRAWINGS LABELED AS "NOT TO SCALE" ARE INTERNATIONALLY DRAWN NOT TO SCALE FOR VISUAL CLARITY. ALL OTHER DETAILS, FOR WHICH NO SCALE IS SHOWN, ARE DRAWN PROPORTIONAL AND ARE FULLY DIMENSIONED.

M.P. 238.22, BIN 5009929

ALTERED ON: _____ AFFIXED ON: 05/20/2024

SIGNATURE: _____ DANIEL A. LEVINE, PE
STAMP: _____

IT IS A VIOLATION OF LAW FOR ANY PERSON, UNLESS THEY ARE ACTING UNDER THE DIRECTION OF A LICENSED PROFESSIONAL ENGINEER, ARCHITECT, LANDSCAPE ARCHITECT, OR LAND SURVEYOR, TO ALTER AN ITEM IN ANY WAY. IF AN ITEM BEARING THE STAMP OF A LICENSED PROFESSIONAL IS ALTERED, THE ALTERING ENGINEER, ARCHITECT, LANDSCAPE ARCHITECT, OR LAND SURVEYOR SHALL STAMP THE DOCUMENT AND INCLUDE THE NOTATION "ALTERED BY" FOLLOWED BY THEIR SIGNATURE, THE DATE OF SUCH ALTERATION, AND A SPECIFIC DESCRIPTION OF THE ALTERATION.

REVISIONS			
DATE	DESCRIPTION	BY	SYM.

PARSONS

TITLE OF PROJECT REPLACEMENT OF I-90 BRIDGE OVER ORISKANY BOULEVARD	CONTRACT NUMBER: TAS 24-20B
LOCATION OF PROJECT SYRACUSE DIVISION MP 238.22	DATE: 04/03/2024
TITLE OF DRAWING INTERIM STEEL SHEETING WALL PLAN AND ELEVATION WESTBOUND REPLACEMENT	DRAWING NUMBER: ST-8