

SM 282 E 12/02

PSN                      BORNUM FHB-5  
DIVISION Syracuse  
COUNTY Oneida  
PIN S52886  
ROUTE Thruway Mainline  
MILEPOST 238.22  
PROJECT Syracuse Division 2017 Design-Build Bridge Replacements



NEW YORK STATE THRUWAY AUTHORITY  
NEW YORK STATE CANAL CORPORATION  
**SUBSURFACE EXPLORATION LOG**



HOLE FH-B  
LINE                       
STA                       
OFFSET ft  
SURF. ELEV. 450.42, NAD 88  
DEPTH TO WATER 23.0

COORDINATES (Lat) 43.130108°N (Long) 75.300575°W  
DATE START 1/3/2017 DATE FINISH 1/3/2017

AUGER 4 1/4" I.D. HOLLOW STEM FLIGHT AUGER WT OF HAMMER-CASING lb HAMMER FALL-CASING in  
CASING O. D. in I. D. in WT OF HAMMER-SAMPLER 140 lb HAMMER FALL-SAMPLER 30 in  
SAMPLER O. D. 2 in I. D. 1-3/8 in HAMMER TYPE Safety

| CASING<br>BLOWS/ft | DEPTH (ft.)<br>BELOW<br>SURFACE | SAMPLE<br>NO. | BLOWS ON<br>SAMPLER (in.) |         |          |          | MOIST.<br>CONT.<br>(%) | Soil Recovery<br>(in.) | Rock Recovery<br>(ft.) | DESCRIPTION OF SOIL AND ROCK  |
|--------------------|---------------------------------|---------------|---------------------------|---------|----------|----------|------------------------|------------------------|------------------------|---|
|                    |                                 |               | 0<br>6                    | 6<br>12 | 12<br>18 | 18<br>24 |                        |                        |                        |   |
|                    | 0.0                             |               |                           |         |          |          |                        |                        |                        | Dark gray asphalt pavement to 0.8 feet. -   |
|                    |                                 |               |                           |         |          |          |                        |                        |                        | Crushed stone fill. -   |
|                    |                                 |               |                           |         |          |          |                        |                        |                        |   |
|                    |                                 |               |                           |         |          |          |                        |                        |                        |   |
|                    |                                 |               |                           |         |          |          |                        |                        |                        |   |
|                    |                                 |               |                           |         |          |          |                        |                        |                        |   |
|                    |                                 |               |                           |         |          |          |                        |                        |                        |   |
|                    | 5.0                             | SS1           | 6                         | 4       | 5        | 7        | 8.9%                   | 14                     |                        | Brown (SILTY-SAND) fill with 0 to 3% mostly very fine to fine size sand, trace silt, loose, massive soil structure, (SP). M - NPL           |
|                    |                                 |               |                           |         |          |          |                        |                        |                        | -   |
|                    |                                 |               |                           |         |          |          |                        |                        |                        |   |
|                    |                                 |               |                           |         |          |          |                        |                        |                        |   |
|                    |                                 |               |                           |         |          |          |                        |                        |                        |   |
|                    |                                 |               |                           |         |          |          |                        |                        |                        |   |
|                    |                                 |               |                           |         |          |          |                        |                        |                        |   |
|                    | 10.0                            | SS2           | 7                         | 5       | 4        | 4        | 7.8%                   | 13                     |                        | Same as 4.0-6.0' M - NPL  |
|                    |                                 |               |                           |         |          |          |                        |                        |                        | -   |
|                    |                                 |               |                           |         |          |          |                        |                        |                        |   |
|                    |                                 |               |                           |         |          |          |                        |                        |                        |   |
|                    |                                 |               |                           |         |          |          |                        |                        |                        |   |
|                    |                                 |               |                           |         |          |          |                        |                        |                        |   |
|                    |                                 |               |                           |         |          |          |                        |                        |                        |   |
|                    | 15.0                            | SS3           | 7                         | 11      | 11       | 18       | 5.8%                   | 16                     |                        | Brown (SILTY-SAND) fill with 3 to 7% gravel, mostly very fine to fine size sand, trace silt, compact, massive soil structure, (SP). M - NPL |
|                    |                                 |               |                           |         |          |          |                        |                        |                        | -   |
|                    |                                 |               |                           |         |          |          |                        |                        |                        |   |
|                    |                                 |               |                           |         |          |          |                        |                        |                        |   |
|                    |                                 |               |                           |         |          |          |                        |                        |                        |   |
|                    |                                 |               |                           |         |          |          |                        |                        |                        |   |
|                    | 20.0                            | SS4           | 6                         | 18      | 23       | 27       | 16.0%                  | 12                     |                        | Brown (SILTY-SAND) fill with 5 to 7% gravel, mostly very fine to fine size sand, trace silt, dense, massive soil structure, (SP). W - NPL   |
|                    |                                 |               |                           |         |          |          |                        |                        |                        | -   |
|                    |                                 |               |                           |         |          |          |                        |                        |                        |   |
|                    |                                 |               |                           |         |          |          |                        |                        |                        |   |
|                    |                                 |               |                           |         |          |          |                        |                        |                        |   |
|                    | 25.0                            | SS5           | 19                        | 16      |          |          | 24.0%                  | 13                     |                        | Grayish brown (SILTY-SAND) fill with 0 to 3% gravel, mostly very fine to fine size sand, trace to little silt, dense, S - NPL               |
|                    |                                 |               |                           |         |          |          |                        |                        |                        | -   |

The subsurface information shown here was obtained for design and estimate purposes. It is made available so that users may have access to the same information available to the State. It is presented in good faith. By the nature of the exploration process, the information represents only a small fraction of the total volume of the material at the site. Interpolation between data samples may not be indicative of the actual material encountered.

DRILL RIG OPERATOR Philip Bence  
SOIL & ROCK DESCRIPTION Brandon Mikolin  
INSPECTOR Matthew Conley (Stantec)  
BIN 5009929  
STRUCTURE NAME Thruway/Oriskany Blvd. (Rt. 69)

TWY-CAN SUBSURF EXPLORATION 6K16\_BIN-5009929-DRAFTS.GPJ TWYSE1TMPL\_V05.GDT 3/31/17

SM 282 E 12/02

PSN                      BORNUM FHB-5  
DIVISION Syracuse  
COUNTY Oneida  
PIN S52886  
ROUTE Thruway Mainline  
MILEPOST 238.22  
PROJECT Syracuse Division 2017 Design-Build Bridge Replacements



NEW YORK STATE THRUWAY AUTHORITY  
NEW YORK STATE CANAL CORPORATION  
**SUBSURFACE EXPLORATION LOG**



HOLE FH-B  
LINE                       
STA                       
OFFSET ft  
SURF. ELEV. 450.42, NAD 88  
DEPTH TO WATER 23.0

COORDINATES (Lat) 43.130108°N (Long) 75.300575°W  
DATE START 1/3/2017 DATE FINISH 1/3/2017

AUGER 4 1/4" I.D. HOLLOW STEM FLIGHT AUGER WT OF HAMMER-CASING                      lb HAMMER FALL-CASING                      in  
CASING O. D.                      in I. D.                      in WT OF HAMMER-SAMPLER 140 lb HAMMER FALL-SAMPLER 30 in  
SAMPLER O. D. 2 in I. D. 1-3/8 in HAMMER TYPE Safety

| CASING<br>BLOWS/ft | DEPTH (ft.)<br>BELOW<br>SURFACE | SAMPLE<br>NO. | BLOWS ON<br>SAMPLER (in.) |    |    |    | MOIST.<br>CONT.<br>(%) | Soil Recovery<br>(in.) | Rock Recovery<br>(ft.) | DESCRIPTION OF SOIL AND ROCK  |
|--------------------|---------------------------------|---------------|---------------------------|----|----|----|------------------------|------------------------|------------------------|---|
|                    |                                 |               | 0                         | 6  | 12 | 18 |                        |                        |                        |   |
|                    |                                 |               | 6                         | 12 | 18 | 24 |                        |                        |                        |   |
|                    | 25.0                            |               |                           |    | 14 |    |                        |                        |                        | massive soil structure, (SM).<br>-----<br>-   |
|                    |                                 |               |                           |    |    |    |                        |                        |                        |   |
|                    |                                 |               |                           |    |    |    |                        |                        |                        |   |
|                    |                                 |               |                           |    |    |    |                        |                        |                        |   |
|                    |                                 |               |                           |    |    |    |                        |                        |                        |   |
|                    |                                 |               |                           |    |    |    |                        |                        |                        |   |
|                    |                                 |               |                           |    |    |    |                        |                        |                        |   |
|                    | 30.0                            | SS6           | 5                         | 6  | 7  | 10 | 27.5%                  | 12                     |                        | Gray (SILT) compact, weakly thinly bedded, (ML). S - NPL<br>-----<br>-  |
|                    |                                 |               |                           |    |    |    |                        |                        |                        |   |
|                    |                                 |               |                           |    |    |    |                        |                        |                        |   |
|                    |                                 |               |                           |    |    |    |                        |                        |                        |   |
|                    |                                 |               |                           |    |    |    |                        |                        |                        |   |
|                    |                                 |               |                           |    |    |    |                        |                        |                        |   |
|                    |                                 |               |                           |    |    |    |                        |                        |                        |   |
|                    | 35.0                            | SS7           | 6                         | 4  | 6  | 8  | 26.3%                  | 8                      |                        | Gray (SILT) with trace clay, compact, thinly bedded, (ML). S - LPL<br>-----<br>-                                      |
|                    |                                 |               |                           |    |    |    |                        |                        |                        |   |
|                    |                                 |               |                           |    |    |    |                        |                        |                        |   |
|                    |                                 |               |                           |    |    |    |                        |                        |                        |   |
|                    |                                 |               |                           |    |    |    |                        |                        |                        |   |
|                    |                                 |               |                           |    |    |    |                        |                        |                        |   |
|                    | 40.0                            | SS8           | 50/3                      |    |    |    | 14.1%                  | 3                      |                        | Gray (SANDY-SILT) with 10 to 20% gravel, little sand, very dense, massive soil structure, (ML). M - NPL<br>-----<br>- |
|                    |                                 |               |                           |    |    |    |                        |                        |                        |   |
|                    |                                 |               |                           |    |    |    |                        |                        |                        |   |
|                    |                                 |               |                           |    |    |    |                        |                        |                        |   |
|                    |                                 |               |                           |    |    |    |                        |                        |                        |   |
|                    |                                 |               |                           |    |    |    |                        |                        |                        |   |
|                    | 45.0                            | SS9           | 50/4                      |    |    |    | 8.8%                   | 4                      |                        | Same as 39.0-41.0' M - NPL<br>-----<br>-  |
|                    |                                 |               |                           |    |    |    |                        |                        |                        |   |
|                    |                                 |               |                           |    |    |    |                        |                        |                        |   |
|                    |                                 |               |                           |    |    |    |                        |                        |                        |   |
|                    |                                 |               |                           |    |    |    |                        |                        |                        |   |
|                    | 50.0                            | SS10          | 50/4                      |    |    |    | 6.3%                   | 4                      |                        | Same as 39.0-41.0' M - NPL<br>-----<br>-  |
|                    |                                 |               |                           |    |    |    |                        |                        |                        |   |

*The subsurface information shown here was obtained for design and estimate purposes. It is made available so that users may have access to the same information available to the State. It is presented in good faith. By the nature of the exploration process, the information represents only a small fraction of the total volume of the material at the site. Interpolation between data samples may not be indicative of the actual material encountered.*

DRILL RIG OPERATOR Philip Bence  
SOIL & ROCK DESCRIPTION Brandon Mikolin  
INSPECTOR Matthew Conley (Stantec)  
BIN 5009929  
STRUCTURE NAME Thruway/Oriskany Blvd. (Rt. 69)

SM 282 E 12/02

PSN                      BORNUM FHB-5  
DIVISION Syracuse  
COUNTY Oneida  
PIN S52886  
ROUTE Thruway Mainline  
MILEPOST 238.22  
PROJECT Syracuse Division 2017 Design-Build Bridge Replacements



NEW YORK STATE THRUWAY AUTHORITY  
NEW YORK STATE CANAL CORPORATION  
**SUBSURFACE EXPLORATION LOG**



HOLE FH-B  
LINE                       
STA                       
OFFSET ft  
SURF. ELEV. 450.42, NAD 88  
DEPTH TO WATER 23.0

COORDINATES (Lat) 43.130108°N (Long) 75.300575°W  
DATE START 1/3/2017 DATE FINISH 1/3/2017

AUGER 4 1/4" I.D. HOLLOW STEM FLIGHT AUGER WT OF HAMMER-CASING                      lb HAMMER FALL-CASING                      in  
CASING O. D.                      in I. D.                      in WT OF HAMMER-SAMPLER 140 lb HAMMER FALL-SAMPLER 30 in  
SAMPLER O. D. 2 in I. D. 1-3/8 in HAMMER TYPE Safety

| CASING<br>BLOWS/ft | DEPTH (ft.)<br>BELOW<br>SURFACE | SAMPLE<br>NO. | BLOWS ON<br>SAMPLER (in.) |    |    |    | MOIST.<br>CONT.<br>(%) | Soil Recovery<br>(in.) | Rock Recovery<br>(ft.) | DESCRIPTION OF SOIL AND ROCK   |
|--------------------|---------------------------------|---------------|---------------------------|----|----|----|------------------------|------------------------|------------------------|--|
|                    |                                 |               | 0                         | 6  | 12 | 18 |                        |                        |                        |  |
|                    | 50.0                            |               | 6                         | 12 | 18 | 24 |                        |                        |                        |  |
|                    |                                 |               |                           |    |    |    |                        |                        |                        |  |
|                    |                                 |               |                           |    |    |    |                        |                        |                        |  |
|                    |                                 |               |                           |    |    |    |                        |                        |                        |  |
|                    |                                 |               |                           |    |    |    |                        |                        |                        |  |
|                    |                                 |               |                           |    |    |    |                        |                        |                        |  |
|                    | 55.0                            | SS11          | 50/3                      |    |    |    | 4.9%                   | 3                      |                        | Dark gray (SANDY-SILT) with 10 to 20% gravel, little sand, very dense, massive soil structure, (ML). M - NPL |
|                    |                                 |               |                           |    |    |    |                        |                        |                        |  |
|                    |                                 |               |                           |    |    |    |                        |                        |                        |  |
|                    |                                 |               |                           |    |    |    |                        |                        |                        |  |
|                    |                                 |               |                           |    |    |    |                        |                        |                        |  |
|                    |                                 |               |                           |    |    |    |                        |                        |                        |  |
|                    | 60.0                            | SS12          | 50/3                      |    |    |    | 8.0%                   | 3                      |                        | Same as 54.0-56.0' M - NPL   |
|                    |                                 |               |                           |    |    |    |                        |                        |                        |  |
|                    |                                 |               |                           |    |    |    |                        |                        |                        |  |
|                    |                                 |               |                           |    |    |    |                        |                        |                        |  |
|                    |                                 |               |                           |    |    |    |                        |                        |                        |  |
|                    |                                 |               |                           |    |    |    |                        |                        |                        |  |
|                    | 65.0                            | SS13          | 50/3                      |    |    |    | 7.7%                   | 3                      |                        | Same as 54.0-56.0' M - NPL   |
|                    |                                 |               |                           |    |    |    |                        |                        |                        |  |
|                    |                                 |               |                           |    |    |    |                        |                        |                        |  |
|                    |                                 |               |                           |    |    |    |                        |                        |                        |  |
|                    |                                 |               |                           |    |    |    |                        |                        |                        |  |
|                    |                                 | SS14          | 50/4                      |    |    |    | 11.6%                  | 3                      |                        | Same as 54.0-56.0' M - NPL   |

BOTTOM OF HOLE AT 69.40 ft

Note:  
Advanced bore hole with 4 1/4" ID x 8" OD hollow stem auger casing with 5.0-foot interval sampling to 69.4 feet. Bore hole was backfilled with cuttings and ground surface repaired with a concrete patch.

The subsurface information shown here was obtained for design and estimate purposes. It is made available so that users may have access to the same information available to the State. It is presented in good faith. By the nature of the exploration process, the information represents only a small fraction of the total volume of the material at the site. Interpolation between data samples may not be indicative of the actual material encountered.

DRILL RIG OPERATOR Philip Bence  
SOIL & ROCK DESCRIPTION Brandon Mikolin  
INSPECTOR Matthew Conley (Stantec)  
BIN 5009929  
STRUCTURE NAME Thruway/Oriskany Blvd. (Rt. 69)

CONTRACT                      CONTRACTOR Earth Dimensions, Inc.

SHEET 3 OF 4 HOLE FH-B

SM 282 E 12/02

PSN \_\_\_\_\_ BORNUM FHB-5  
DIVISION Syracuse  
COUNTY Oneida  
PIN S52886  
ROUTE Thruway Mainline  
MILEPOST 238.22  
PROJECT Syracuse Division 2017 Design-Build Bridge Replacements



NEW YORK STATE THRUWAY AUTHORITY  
NEW YORK STATE CANAL CORPORATION  
**SUBSURFACE EXPLORATION LOG**



HOLE FH-B  
LINE \_\_\_\_\_  
STA \_\_\_\_\_  
OFFSET ft  
SURF. ELEV. 450.42, NAD 88  
DEPTH TO WATER 23.0

COORDINATES (Lat) 43.130108°N (Long) 75.300575°W  
DATE START 1/3/2017 DATE FINISH 1/3/2017

AUGER 4 1/4" I.D. HOLLOW STEM FLIGHT AUGER WT OF HAMMER-CASING lb HAMMER FALL-CASING in  
CASING O. D. in I. D. in WT OF HAMMER-SAMPLER 140 lb HAMMER FALL-SAMPLER 30 in  
SAMPLER O. D. 2 in I. D. 1-3/8 in HAMMER TYPE Safety

| CASING<br>BLOWS/ft | DEPTH (ft.)<br>BELOW<br>SURFACE | SAMPLE<br>NO. | BLOWS ON<br>SAMPLER (in.) |    |    |    |  | MOIST.<br>CONT.<br>(%) | Soil Recovery<br>(in.) | Rock Recovery<br>(ft.) | DESCRIPTION OF SOIL AND ROCK |
|--------------------|---------------------------------|---------------|---------------------------|----|----|----|--|------------------------|------------------------|------------------------|------------------------------|
|                    |                                 |               | 0                         | 6  | 12 | 18 |  |                        |                        |                        |                              |
|                    |                                 |               | 6                         | 12 | 18 | 24 |  |                        |                        |                        |                              |

| DATE      | TIME  | DEPTH (ft.) |        |       | ARTESIAN<br>HEAD HEIGHT<br>ABOVE GROUND | FILLED WITH<br>WATER AT<br>END OF DAY |
|-----------|-------|-------------|--------|-------|---|---------------------------------------|
|           |       | HOLE        | CASING | WATER |   |                                       |
| 03-Jan-17 | 10:00 | 24.00       | 24.00  | 23.00 | NO                                      | No                                    |
| 03-Jan-17 | 15:00 | 69.40       | 69.00  | 25.20 | NO                                      | No                                    |

The subsurface information shown here was obtained for design and estimate purposes. It is made available so that users may have access to the same information available to the State. It is presented in good faith. By the nature of the exploration process, the information represents only a small fraction of the total volume of the material at the site. Interpolation between data samples may not be indicative of the actual material encountered.

DRILL RIG OPERATOR Philip Bence  
SOIL & ROCK DESCRIPTION Brandon Mikolin  
INSPECTOR Matthew Conley (Stantec)  
BIN 5009929  
STRUCTURE NAME Thruway/Oriskany Blvd. (Rt. 69)

CONTRACT \_\_\_\_\_ CONTRACTOR Earth Dimensions, Inc.

SHEET 4 OF 4 HOLE FH-B

SM 282 E 12/02

PSN \_\_\_\_\_ BORNUM FHB-6  
DIVISION Syracuse  
COUNTY Oneida  
PIN S52886  
ROUTE Thruway Mainline  
MILEPOST 238.22  
PROJECT Syracuse Division 2017 Design-Build Bridge Replacements



NEW YORK STATE THRUWAY AUTHORITY  
NEW YORK STATE CANAL CORPORATION  
SUBSURFACE EXPLORATION LOG



HOLE FH-B  
LINE \_\_\_\_\_  
STA \_\_\_\_\_  
OFFSET ft  
SURF. ELEV. 452.15, NAD 88  
DEPTH TO WATER 18.0

COORDINATES (Lat) 43.129662°N (Long) 75.301038°W  
DATE START 12/2/2016 DATE FINISH 12/6/2016

AUGER 4 1/4" I.D. HOLLOW STEM FLIGHT AUGER WT OF HAMMER-CASING lb HAMMER FALL-CASING in  
CASING O. D. in I. D. in WT OF HAMMER-SAMPLER 140 lb HAMMER FALL-SAMPLER 30 in  
SAMPLER O. D. 2 in I. D. 1-3/8 in HAMMER TYPE Safety

| CASING<br>BLOWS/ft | DEPTH (ft.)<br>BELOW<br>SURFACE | SAMPLE<br>NO. | BLOWS ON<br>SAMPLER (in.) |         |          |          | MOIST.<br>CONT.<br>(%) | Soil Recovery<br>(in.) | Rock Recovery<br>(ft.) | DESCRIPTION OF SOIL AND ROCK   |
|--------------------|---------------------------------|---------------|---------------------------|---------|----------|----------|------------------------|------------------------|------------------------|--|
|                    |                                 |               | 0<br>6                    | 6<br>12 | 12<br>18 | 18<br>24 |                        |                        |                        |  |
|                    | 0.0                             |               |                           |         |          |          |                        |                        |                        | Dark gray asphalt pavement to 1.5 feet. -  |
|                    |                                 |               |                           |         |          |          |                        |                        |                        | -  |
|                    |                                 | SS1           | 5                         | 5       | 6        | 6        | 9.5%                   | 17                     |                        | Brown (SILTY-SAND) fill with 0 to 3% gravel, mostly very fine to fine size sand, trace to little silt, compact, massive soil structure, (SM). M - NPL  |
|                    | 5.0                             |               |                           |         |          |          |                        |                        |                        | -  |
|                    |                                 |               |                           |         |          |          |                        |                        |                        |  |
|                    |                                 | SS2           | 4                         | 5       | 6        | 8        | 6.8%                   | 19                     |                        | Same as 3.0-5.0' M - NPL   |
|                    | 10.0                            |               |                           |         |          |          |                        |                        |                        | -  |
|                    |                                 |               |                           |         |          |          |                        |                        |                        |  |
|                    |                                 | SS3           | 16                        | 40      | 100/1    |          | 7.0%                   | 12                     |                        | 13.0-14.0' Brown to dark brown (SILTY-SAND) fill with 5 to 10% gravel, mostly very fine to fine size sand, trace to little silt, dense, massive soil structure, (SM). M to W - NPL<br>14.0-15.0' Dark gray to brown asphalt pavement remnants. |
|                    | 15.0                            |               |                           |         |          |          |                        |                        |                        | -  |
|                    |                                 |               |                           |         |          |          |                        |                        |                        |  |
|                    |                                 | SS4           | 3                         | 3       | 3        | 3        | 26.9%                  | 17                     |                        | Faintly mottled brownish gray (SANDY-SILT) with 3 to 7% gravel, little to some sand, trace to little organic matter, loose, weakly thinly bedded, (ML). W - NPL  |
|                    | 20.0                            |               |                           |         |          |          |                        |                        |                        | -  |
|                    |                                 |               |                           |         |          |          |                        |                        |                        |  |
|                    |                                 | SS5           | 5                         | 6       | 9        | 7        | 25.4%                  | 15                     |                        | Light brown (SILT) with trace mostly very fine to fine size sand, compact, thinly bedded, (ML). W - LPL  |
|                    | 25.0                            |               |                           |         |          |          |                        |                        |                        | -  |

The subsurface information shown here was obtained for design and estimate purposes. It is made available so that users may have access to the same information available to the State. It is presented in good faith. By the nature of the exploration process, the information represents only a small fraction of the total volume of the material at the site. Interpolation between data samples may not be indicative of the actual material encountered.

DRILL RIG OPERATOR Philip Bence  
SOIL & ROCK DESCRIPTION Brandon Mikolin  
INSPECTOR Matthew Conley (Stantec)  
BIN 5009929  
STRUCTURE NAME Thruway/Oriskany Blvd. (Rt. 69)

SM 282 E 12/02

PSN \_\_\_\_\_ BORNUM FHB-6  
DIVISION Syracuse  
COUNTY Oneida  
PIN S52886  
ROUTE Thruway Mainline  
MILEPOST 238.22  
PROJECT Syracuse Division 2017 Design-Build Bridge Replacements



NEW YORK STATE THRUWAY AUTHORITY  
NEW YORK STATE CANAL CORPORATION  
SUBSURFACE EXPLORATION LOG



HOLE \_\_\_\_\_ FH-B  
LINE \_\_\_\_\_  
STA \_\_\_\_\_  
OFFSET \_\_\_\_\_ ft  
SURF. ELEV. 452.15, NAD 88  
DEPTH TO WATER 18.0

COORDINATES (Lat) 43.129662°N (Long) 75.301038°W  
DATE START 12/2/2016 DATE FINISH 12/6/2016

AUGER 4 1/4" I.D. HOLLOW STEM FLIGHT AUGER WT OF HAMMER-CASING lb HAMMER FALL-CASING in  
CASING O. D. in I. D. in WT OF HAMMER-SAMPLER 140 lb HAMMER FALL-SAMPLER 30 in  
SAMPLER O. D. 2 in I. D. 1-3/8 in HAMMER TYPE Safety

| CASING<br>BLOWS/ft | DEPTH (ft.)<br>BELOW<br>SURFACE | SAMPLE<br>NO. | BLOWS ON<br>SAMPLER (in.) |         |          |          | MOIST.<br>CONT.<br>(%) | Soil Recovery<br>(in.) | Rock Recovery<br>(ft.) | DESCRIPTION OF SOIL AND ROCK   |
|--------------------|---------------------------------|---------------|---------------------------|---------|----------|----------|------------------------|------------------------|------------------------|--|
|                    |                                 |               | 0<br>6                    | 6<br>12 | 12<br>18 | 18<br>24 |                        |                        |                        |  |
|                    | 25.0                            |               |                           |         |          |          |                        |                        |                        | -  |
|                    |                                 |               |                           |         |          |          |                        |                        |                        |  |
|                    |                                 |               |                           |         |          |          |                        |                        |                        |  |
|                    |                                 | SS6           | 3                         | 4       | 5        | 4        | 34.3%                  | 20                     |                        | Brownish gray (SILTY-CLAY) stiff, thinly laminated M to W - PL<br>with very thin coarse silt lenses, (CL).                                   |
|                    | 30.0                            |               |                           |         |          |          |                        |                        |                        | -  |
|                    |                                 |               |                           |         |          |          |                        |                        |                        |  |
|                    |                                 |               |                           |         |          |          |                        |                        |                        |  |
|                    |                                 | SS7           | 11                        | 12      | 24       | 33       | 9.4%                   | 15                     |                        | Brownish gray (SAND-SILT-CLAY) with 5 to 15% gravel, M - LPL<br>little sand, trace to little clay, hard, massive soil structure,<br>(ML-CL). |
|                    | 35.0                            |               |                           |         |          |          |                        |                        |                        | -  |
|                    |                                 |               |                           |         |          |          |                        |                        |                        |  |
|                    |                                 |               |                           |         |          |          |                        |                        |                        |  |
|                    |                                 | SS8           | 73                        | 100/3   |          |          | 7.8%                   | 8                      |                        | Brownish gray (SANDY-SILT) with 5 to 25% gravel, little M - LPL<br>sand, trace clay, very dense, massive soil structure, (ML).               |
|                    | 40.0                            |               |                           |         |          |          |                        |                        |                        | -  |
|                    |                                 |               |                           |         |          |          |                        |                        |                        |  |
|                    |                                 |               |                           |         |          |          |                        |                        |                        |  |
|                    |                                 | SS9           | 91                        | 100/5   |          |          | 7.2%                   | 8                      |                        | Same as 38.0-40.0' M - LPL   |
|                    | 45.0                            |               |                           |         |          |          |                        |                        |                        | -  |
|                    |                                 |               |                           |         |          |          |                        |                        |                        |  |
|                    |                                 |               |                           |         |          |          |                        |                        |                        |  |
|                    |                                 | SS10          | 100/3                     |         |          |          | 9.4%                   | 1                      |                        | Same as 38.0-40.0' M - LPL<br>Note: Boulder from 48.0 to 48.3 feet.  |
|                    | 50.0                            |               |                           |         |          |          |                        |                        |                        | -  |

The subsurface information shown here was obtained for design and estimate purposes. It is made available so that users may have access to the same information available to the State. It is presented in good faith. By the nature of the exploration process, the information represents only a small fraction of the total volume of the material at the site. Interpolation between data samples may not be indicative of the actual material encountered.

DRILL RIG OPERATOR Philip Bence  
SOIL & ROCK DESCRIPTION Brandon Mikolin  
INSPECTOR Matthew Conley (Stantec)  
BIN 5009929  
STRUCTURE NAME  
Thruway/Oriskany Blvd. (Rt. 69)

SM 282 E 12/02

PSN \_\_\_\_\_ BORNUM FHB-6  
DIVISION Syracuse  
COUNTY Oneida  
PIN S52886  
ROUTE Thruway Mainline  
MILEPOST 238.22  
PROJECT Syracuse Division 2017 Design-Build Bridge Replacements



NEW YORK STATE THRUWAY AUTHORITY  
NEW YORK STATE CANAL CORPORATION  
SUBSURFACE EXPLORATION LOG



HOLE LINE STA \_\_\_\_\_ FH-B  
OFFSET \_\_\_\_\_ ft  
SURF. ELEV. 452.15, NAD 88  
DEPTH TO WATER 18.0

COORDINATES (Lat) 43.129662°N (Long) 75.301038°W  
DATE START 12/2/2016 DATE FINISH 12/6/2016

AUGER 4 1/4" I.D. HOLLOW STEM FLIGHT AUGER WT OF HAMMER-CASING \_\_\_\_\_ lb HAMMER FALL-CASING \_\_\_\_\_ in  
CASING O. D. \_\_\_\_\_ in I. D. \_\_\_\_\_ in WT OF HAMMER-SAMPLER 140 lb HAMMER FALL-SAMPLER 30 in  
SAMPLER O. D. 2 in I. D. 1-3/8 in HAMMER TYPE Safety

| CASING<br>BLOWS/ft | DEPTH (ft.)<br>BELOW<br>SURFACE | SAMPLE<br>NO. | BLOWS ON<br>SAMPLER (in.) |       |       |    | MOIST.<br>CONT.<br>(%) | Soil Recovery<br>(in.) | Rock Recovery<br>(ft.) | DESCRIPTION OF SOIL AND ROCK   |
|--------------------|---------------------------------|---------------|---------------------------|-------|-------|----|------------------------|------------------------|------------------------|--|
|                    |                                 |               | 0                         | 6     | 12    | 18 |                        |                        |                        |  |
|                    |                                 |               | 6                         | 12    | 18    | 24 |                        |                        |                        |  |
|                    | 50.0                            |               |                           |       |       |    |                        |                        |                        | -  |
|                    |                                 |               |                           |       |       |    |                        |                        |                        |  |
|                    |                                 |               |                           |       |       |    |                        |                        |                        |  |
|                    |                                 | SS11          | 40                        | 100/5 |       |    | 6.9%                   | 9                      |                        | Dark brown gravelly (SANDY-SILT) with 15 to 40% gravel, little to some sand, very dense, massive soil structure, (ML). M - NPL |
|                    | 55.0                            |               |                           |       |       |    |                        |                        |                        | Note: Auger refusal at 57.9 feet. Switched to roller bit and collected sample 12 from 59.0 to 61.0 feet. -                     |
|                    |                                 |               |                           |       |       |    |                        |                        |                        | Boulder from 57.9 to 58.9 feet.  |
|                    |                                 |               |                           |       |       |    |                        |                        |                        |  |
|                    |                                 |               |                           |       |       |    |                        |                        |                        |  |
|                    |                                 | SS12          | 52                        | 87    | 100/3 |    | 7.1%                   | 12                     |                        | Same as 53.0-55.0' M - NPL   |
|                    | 60.0                            |               |                           |       |       |    |                        |                        |                        |  |
|                    |                                 |               |                           |       |       |    |                        |                        |                        |  |
|                    |                                 |               |                           |       |       |    |                        |                        |                        |  |
|                    |                                 | SS13          | 100/5                     |       |       |    | 6.9%                   | 3                      |                        | Same as 53.0-55.0' M - NPL   |
|                    | 65.0                            |               |                           |       |       |    |                        |                        |                        |  |
|                    |                                 |               |                           |       |       |    |                        |                        |                        |  |
|                    |                                 |               |                           |       |       |    |                        |                        |                        |  |
|                    |                                 | SS14          | 100/5                     |       |       |    | 7.4%                   | 3                      |                        | Same as 53.0-55.0' M - NPL   |

BOTTOM OF HOLE AT 68.50 ft

Note:  
Advanced bore hole with 4 1/4" ID x 8" OD hollow stem auger casing with 5.0-foot interval sampling to 57.9 feet. Continued below with fluid rotary methods using 3 7/8" roller bit and 5.0-foot interval sampling to 68.5 feet. Bore hole was backfilled with cuttings and ground surface repaired with a concrete patch.

The subsurface information shown here was obtained for design and estimate purposes. It is made available so that users may have access to the same information available to the State. It is presented in good faith. By the nature of the exploration process, the information represents only a small fraction of the total volume of the material at the site. Interpolation between data samples may not be indicative of the actual material encountered.

DRILL RIG OPERATOR Philip Bence  
SOIL & ROCK DESCRIPTION Brandon Mikolin  
INSPECTOR Matthew Conley (Stantec)  
BIN 5009929  
STRUCTURE NAME  
Thruway/Oriskany Blvd. (Rt. 69)

CONTRACT \_\_\_\_\_ CONTRACTOR Earth Dimensions, Inc.

SHEET 3 OF 4 HOLE FH-B

TWY-CAN SUBSURF EXPLORATION 6K16\_BIN-5009929-DRAFTS.GPJ TWYSE1TMPL\_V05.GDT 3/31/17



SM 282 E 12/02

PSN \_\_\_\_\_ BORNUM FHB-6  
DIVISION Syracuse  
COUNTY Oneida  
PIN S52886  
ROUTE Thruway Mainline  
MILEPOST 238.22  
PROJECT Syracuse Division 2017 Design-Build Bridge Replacements



NEW YORK STATE THRUWAY AUTHORITY  
NEW YORK STATE CANAL CORPORATION  
SUBSURFACE EXPLORATION LOG



HOLE FH-B  
LINE \_\_\_\_\_  
STA \_\_\_\_\_  
OFFSET ft  
SURF. ELEV. 452.15, NAD 88  
DEPTH TO WATER 18.0

COORDINATES (Lat) 43.129662°N (Long) 75.301038°W  
DATE START 12/2/2016 DATE FINISH 12/6/2016

AUGER 4 1/4" I.D. HOLLOW STEM FLIGHT AUGER WT OF HAMMER-CASING lb HAMMER FALL-CASING in  
CASING O. D. in I. D. in WT OF HAMMER-SAMPLER 140 lb HAMMER FALL-SAMPLER 30 in  
SAMPLER O. D. 2 in I. D. 1-3/8 in HAMMER TYPE Safety

| CASING<br>BLOWS/ft | DEPTH (ft.)<br>BELOW<br>SURFACE | SAMPLE<br>NO. | BLOWS ON<br>SAMPLER (in.) |    |    |    |  | MOIST.<br>CONT.<br>(%) | Soil Recovery<br>(in.) | Rock Recovery<br>(ft.) | DESCRIPTION OF SOIL AND ROCK |
|--------------------|---------------------------------|---------------|---------------------------|----|----|----|--|------------------------|------------------------|------------------------|------------------------------|
|                    |                                 |               | 0                         | 6  | 12 | 18 |  |                        |                        |                        |                              |
|                    |                                 |               | 6                         | 12 | 18 | 24 |  |                        |                        |                        |                              |

| DATE      | TIME  | DEPTH (ft.) |        |       | ARTESIAN<br>HEAD HEIGHT<br>ABOVE GROUND | FILLED WITH<br>WATER AT<br>END OF DAY |
|-----------|-------|-------------|--------|-------|---|---------------------------------------|
|           |       | HOLE        | CASING | WATER |   |                                       |
| 02-Dec-16 | 10:00 | 20.00       | 18.00  | 18.00 | NO                                      | No                                    |
| 02-Dec-16 | 15:00 | 61.00       | 57.90  | 36.00 | NO                                      | No                                    |
| 06-Dec-16 | 09:00 | 65.00       | 57.90  | 26.10 | NO                                      | No                                    |

The subsurface information shown here was obtained for design and estimate purposes. It is made available so that users may have access to the same information available to the State. It is presented in good faith. By the nature of the exploration process, the information represents only a small fraction of the total volume of the material at the site. Interpolation between data samples may not be indicative of the actual material encountered.

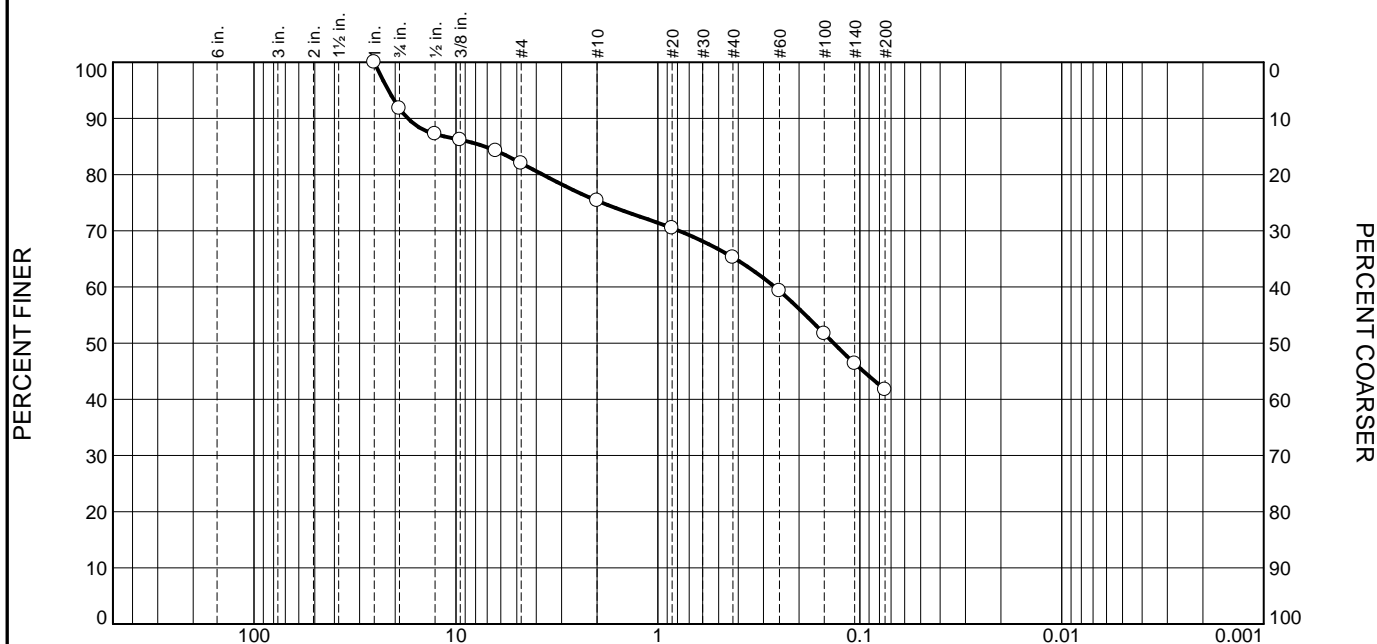
DRILL RIG OPERATOR Philip Bence  
SOIL & ROCK DESCRIPTION Brandon Mikolin  
INSPECTOR Matthew Conley (Stantec)  
BIN 5009929  
STRUCTURE NAME Thruway/Oriskany Blvd. (Rt. 69)

CONTRACT \_\_\_\_\_ CONTRACTOR Earth Dimensions, Inc.

SHEET 4 OF 4 HOLE FH-B



# Particle Size Distribution Report



| % +3" | % Gravel |      | % Sand |        |      | % Fines |      |
|-------|----------|------|--------|--------|------|---------|------|
|       | Coarse   | Fine | Coarse | Medium | Fine | Silt    | Clay |
| 0.0   | 8.2      | 9.8  | 6.7    | 10.0   | 23.6 | 41.7    |      |

| TEST RESULTS (D6913) |               |                  |                |
|----------------------|---------------|------------------|----------------|
| Opening Size         | Percent Finer | Spec.* (Percent) | Pass? (X=Fail) |
| 1"                   | 100.0         |                  |                |
| .75                  | 91.8          |                  |                |
| .5                   | 87.2          |                  |                |
| .375                 | 86.2          |                  |                |
| .25                  | 84.3          |                  |                |
| #4                   | 82.0          |                  |                |
| #10                  | 75.3          |                  |                |
| #20                  | 70.5          |                  |                |
| #40                  | 65.3          |                  |                |
| #60                  | 59.3          |                  |                |
| #100                 | 51.7          |                  |                |
| #140                 | 46.4          |                  |                |
| #200                 | 41.7          |                  |                |

\* (no specification provided)

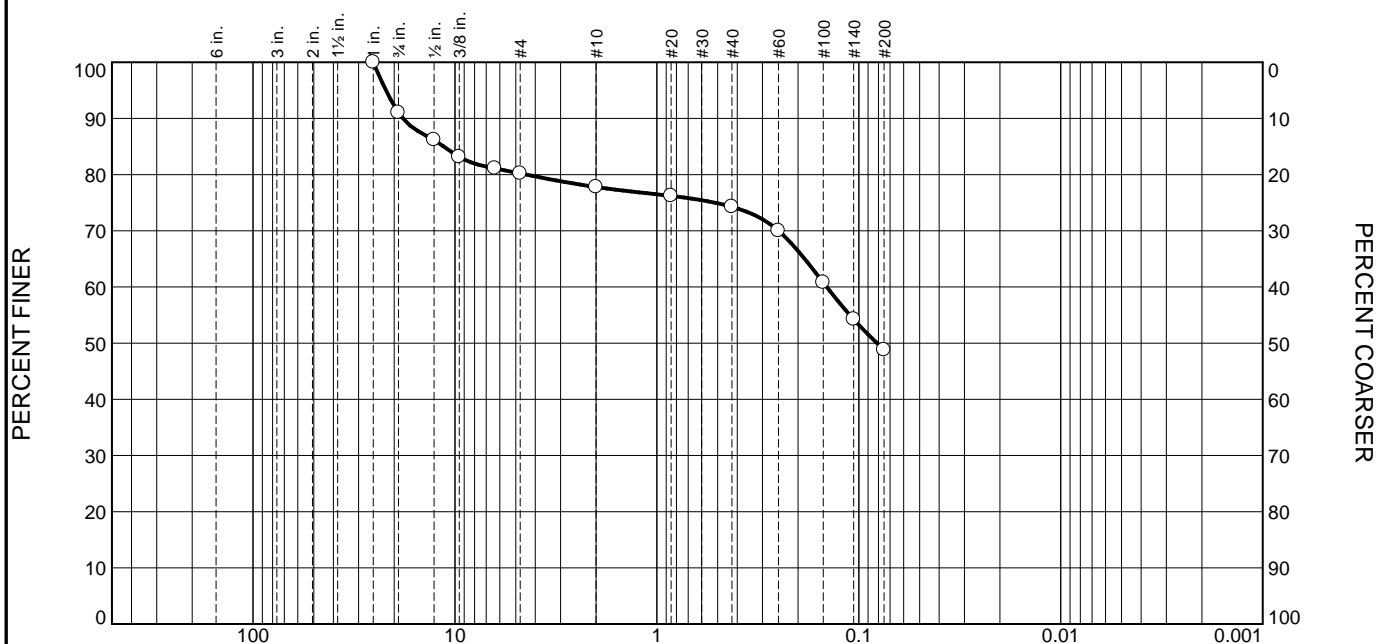
|  |                          |                          |
|--|--------------------------|--------------------------|
| <b>Material Description</b>                    |                          |                          |
| ID#17-038                                      |                          |                          |
| <b>Atterberg Limits (ASTM D 4318)</b>          |                          |                          |
| PL=  | LL=                      | PI=                      |
| <b>Classification</b>                          |                          |                          |
| USCS (D 2487)=                                 | AASHTO (M 145)=          |                          |
| <b>Coefficients</b>                            |                          |                          |
| D <sub>90</sub> = 17.3203                      | D <sub>85</sub> = 7.1888 | D <sub>60</sub> = 0.2637 |
| D <sub>50</sub> = 0.1348                       | D <sub>30</sub> =        | D <sub>15</sub> =        |
| D <sub>10</sub> =                              | C <sub>u</sub> =         | C <sub>c</sub> =         |
| Remarks  |                          |                          |
| Date Received: 2/9/17      Date Tested: 3/1/17 |                          |                          |
| Tested By: ETC                                 |                          |                          |
| Checked By: JMA                                |                          |                          |
| Title: LM                                      |                          |                          |

Source of Sample: 6K16 & 7K16  
Sample Number: FHB-5, SS-10

Date Sampled:

|  |                                |
|--|--------------------------------|
| <b>3rd Rock, LLC</b><br><br><b>East Aurora, NY</b> | Client: Earth Dimensions, Inc. |
|  | Project: 6K16; 7K16            |
| Project No: 17-002                                 | Figure                         |

# Particle Size Distribution Report



| % +3" | % Gravel |      | % Sand |        |      | % Fines |      |
|-------|----------|------|--------|--------|------|---------|------|
|       | Coarse   | Fine | Coarse | Medium | Fine | Silt    | Clay |
| 0.0   | 9.0      | 10.8 | 2.4    | 3.5    | 25.5 | 48.8    |      |

| TEST RESULTS (D6913) |               |                  |                |
|----------------------|---------------|------------------|----------------|
| Opening Size         | Percent Finer | Spec.* (Percent) | Pass? (X=Fail) |
| 1"                   | 100.0         |                  |                |
| .75                  | 91.0          |                  |                |
| .5                   | 86.2          |                  |                |
| .375                 | 83.2          |                  |                |
| .25                  | 81.1          |                  |                |
| #4                   | 80.2          |                  |                |
| #10                  | 77.8          |                  |                |
| #20                  | 76.2          |                  |                |
| #40                  | 74.3          |                  |                |
| #60                  | 70.0          |                  |                |
| #100                 | 60.8          |                  |                |
| #140                 | 54.2          |                  |                |
| #200                 | 48.8          |                  |                |

\* (no specification provided)

**Material Description**  
ID#17-039

**Atterberg Limits (ASTM D 4318)**  
PL=                      LL=                      PI=

**Classification**  
USCS (D 2487)=                      AASHTO (M 145)=

**Coefficients**  
D<sub>90</sub>= 18.1062      D<sub>85</sub>= 11.3565      D<sub>60</sub>= 0.1442  
D<sub>50</sub>= 0.0814      D<sub>30</sub>=                      D<sub>15</sub>=  
D<sub>10</sub>=                      C<sub>u</sub>=                      C<sub>c</sub>=

Remarks

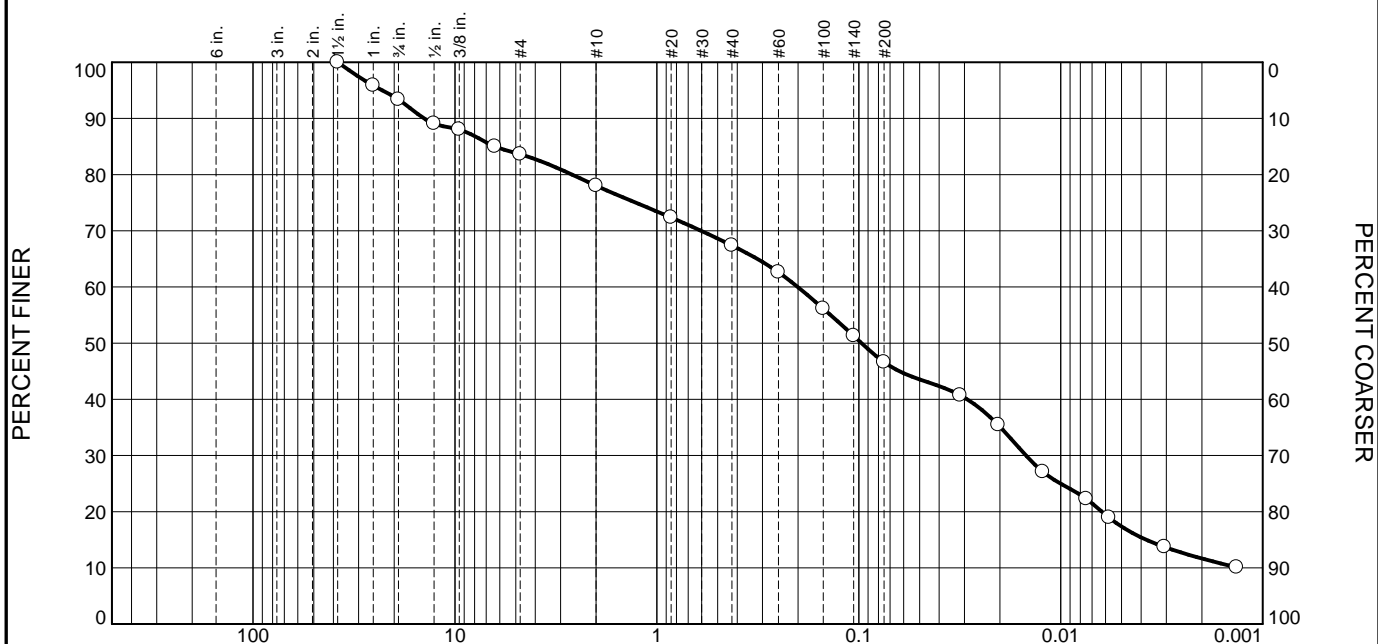
Date Received: 2/9/17                      Date Tested: 3/2/17  
Tested By: ETC  
Checked By: JMA  
Title: LM

Source of Sample: 6K16 & 7K16  
Sample Number: FHB-6, SS4

Date Sampled:

|  |   |
|--|---|
| <b>3rd Rock, LLC</b><br><br><b>East Aurora, NY</b> | Client: Earth Dimensions, Inc.<br>Project: 6K16; 7K16 |
|  | Project No: 17-002                      Figure        |

# Particle Size Distribution Report



| % +3" | % Gravel |      | % Sand |        |      | % Fines |      |
|-------|----------|------|--------|--------|------|---------|------|
|       | Coarse   | Fine | Coarse | Medium | Fine | Silt    | Clay |
| 0.0   | 6.6      | 9.8  | 5.6    | 10.6   | 20.8 | 29.3    | 17.3 |

| TEST RESULTS (D422) |               |                  |                |
|---------------------|---------------|------------------|----------------|
| Opening Size        | Percent Finer | Spec.* (Percent) | Pass? (X=Fail) |
| 1.5"                | 100.0         |                  |                |
| 1"                  | 95.9          |                  |                |
| .75                 | 93.4          |                  |                |
| .5                  | 89.1          |                  |                |
| .375                | 88.0          |                  |                |
| .25                 | 85.0          |                  |                |
| #4                  | 83.6          |                  |                |
| #10                 | 78.0          |                  |                |
| #20                 | 72.4          |                  |                |
| #40                 | 67.4          |                  |                |
| #60                 | 62.6          |                  |                |
| #100                | 56.1          |                  |                |
| #140                | 51.3          |                  |                |
| #200                | 46.6          |                  |                |
| 0.0315 mm.          | 40.7          |                  |                |
| 0.0204 mm.          | 35.4          |                  |                |
| 0.0123 mm.          | 27.1          |                  |                |
| 0.0075 mm.          | 22.3          |                  |                |
| 0.0058 mm.          | 18.9          |                  |                |
| 0.0031 mm.          | 13.7          |                  |                |
| 0.0013 mm.          | 10.1          |                  |                |

\* (no specification provided)

**ID#17-057**

**Material Description**

**Atterberg Limits (ASTM D 4318)**  
 PL=                      LL=                      PI=

**Classification**  
 USCS (D 2487)=                      AASHTO (M 145)=

**Coefficients**  
 D<sub>90</sub>= 14.2068      D<sub>85</sub>= 6.3314      D<sub>60</sub>= 0.2006  
 D<sub>50</sub>= 0.0970      D<sub>30</sub>= 0.0149      D<sub>15</sub>= 0.0038  
 D<sub>10</sub>=                      C<sub>u</sub>=                      C<sub>c</sub>=

**Remarks**

Date Received: 2/9/17                      Date Tested: 2/27/17  
 Tested By: ETC  
 Checked By: JMA  
 Title: LM

Source of Sample: 6K16 & 7K16  
Sample Number: FHB-6, SS8&9

Date Sampled:

**3rd Rock, LLC**

Client: Earth Dimensions, Inc.

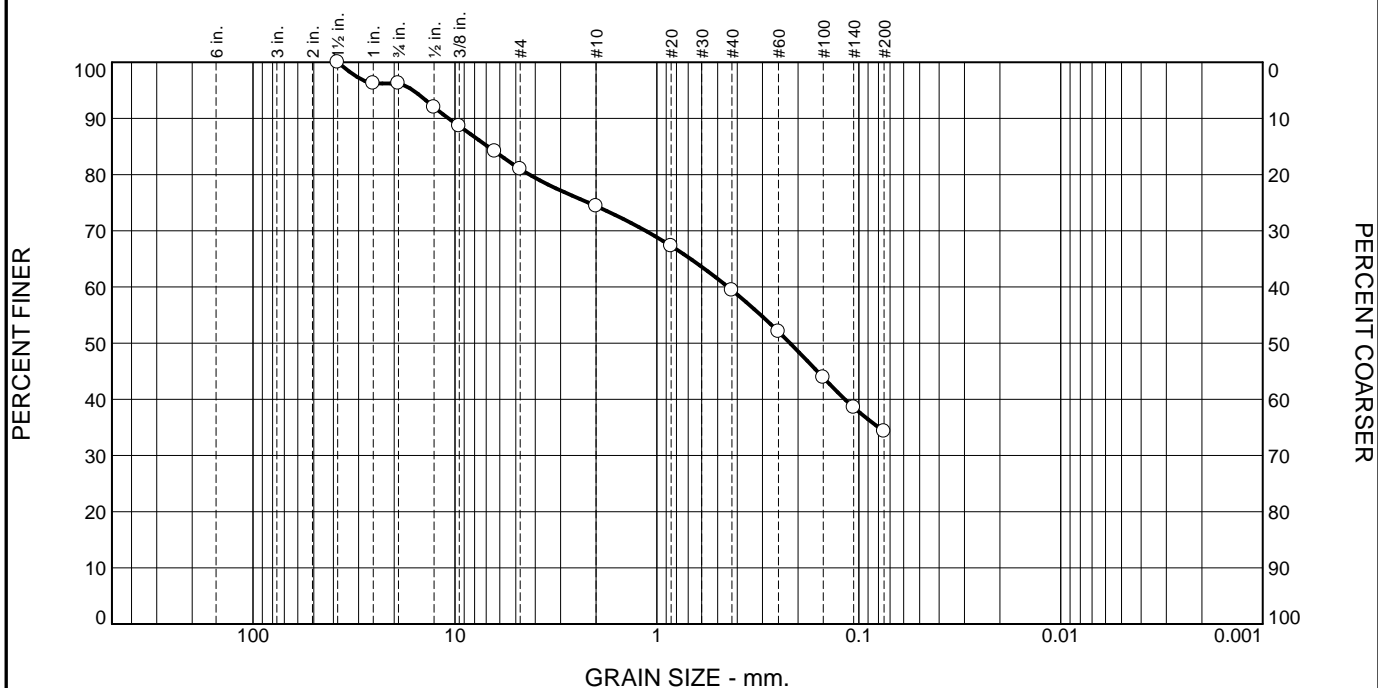
**East Aurora, NY**

Project: 6K16; 7K16

Project No: 17-002

Figure

# Particle Size Distribution Report



| % +3" | % Gravel |      | % Sand |        |      | % Fines |      |
|-------|----------|------|--------|--------|------|---------|------|
|       | Coarse   | Fine | Coarse | Medium | Fine | Silt    | Clay |
| 0.0   | 3.8      | 15.2 | 6.6    | 15.0   | 25.1 | 34.3    |      |

| TEST RESULTS (D6913) |               |                  |                |
|----------------------|---------------|------------------|----------------|
| Opening Size         | Percent Finer | Spec.* (Percent) | Pass? (X=Fail) |
| 1.5"                 | 100.0         |                  |                |
| 1                    | 96.2          |                  |                |
| .75                  | 96.2          |                  |                |
| .5                   | 92.0          |                  |                |
| .375                 | 88.6          |                  |                |
| .25                  | 84.1          |                  |                |
| #4                   | 81.0          |                  |                |
| #10                  | 74.4          |                  |                |
| #20                  | 67.3          |                  |                |
| #40                  | 59.4          |                  |                |
| #60                  | 52.0          |                  |                |
| #100                 | 43.9          |                  |                |
| #140                 | 38.6          |                  |                |
| #200                 | 34.3          |                  |                |

\* (no specification provided)

|  |                          |                          |
|--|--------------------------|--------------------------|
| <b>Material Description</b>                    |                          |                          |
| ID#17-040                                      |                          |                          |
| <b>Atterberg Limits (ASTM D 4318)</b>          |                          |                          |
| PL=  | LL=                      | PI=                      |
| <b>Classification</b>                          |                          |                          |
| USCS (D 2487)=                                 | AASHTO (M 145)=          |                          |
| <b>Coefficients</b>                            |                          |                          |
| D <sub>90</sub> = 10.7585                      | D <sub>85</sub> = 6.8633 | D <sub>60</sub> = 0.4447 |
| D <sub>50</sub> = 0.2191                       | D <sub>30</sub> =        | D <sub>15</sub> =        |
| D <sub>10</sub> =                              | C <sub>u</sub> =         | C <sub>c</sub> =         |
| Remarks  |                          |                          |
| Date Received: 2/9/17      Date Tested: 3/3/17 |                          |                          |
| Tested By: ETC                                 |                          |                          |
| Checked By: JMA                                |                          |                          |
| Title: LM                                      |                          |                          |

Source of Sample: 6K16 & 7K16  
Sample Number: FHB-6, SS11&12

Date Sampled:

**3rd Rock, LLC**

Client: Earth Dimensions, Inc.

Project: 6K16; 7K16

**East Aurora, NY**

Project No: 17-002

Figure



## Water Content Test Results by ASTM D2216

**Project:** New York State Thruway  
**EDI Project No.:** 6K16  
**Client:** Earth Dimensions, Inc.

**Project No:** 16-008  
**Date:** 1/11/17

| Borehole No. | Sample Nos. | Depth, fbg | Lab ID No. | Natural Water Content, % |
|--------------|-------------|------------|------------|--------------------------|
| FH-B-3       | S-1         | 4-6        | 17-002     | 20.2                     |
|              | S-2         | 9-11       | 17-002     | 19.4                     |
|              | S-3         | 14-16      | 17-002     | 13.2                     |
|              | S-4         | 19-21      | 17-002     | 3.7                      |
|              | S-5         | 24-26      | 17-002     | 4.9                      |
|              | S-6         | 29-31      | 17-002     | 10.0                     |
|              | S-7         | 34-36      | 17-002     | 33.7                     |
|              | S-8         | 39-41      | 17-002     | 20.8                     |
|              | S-9         | 44-46      | 17-002     | 10.9                     |
|              | S-10        | 49-51      | 17-002     | No Sample                |
|              | S-11        | 54-56      | 17-002     | 18.1                     |
|              | S-12        | 59-91      | 17-002     | 19.8                     |
|              | S-13        | 64-66      | 17-002     | 22.5                     |
|              | S-14        | 69-70.4    | 17-002     | 19.7                     |
| FH-B-5       | S-1         | 4-6        | 17-003     | 8.9                      |
|              | S-2         | 9-11       | 17-003     | 7.8                      |
|              | S-3         | 14-16      | 17-003     | 5.8                      |
|              | S-4         | 19-21      | 17-003     | 16.0                     |
|              | S-5         | 24-26      | 17-003     | 24.0                     |
|              | S-6         | 29-31      | 17-003     | 27.5                     |
|              | S-7         | 34-36      | 17-003     | 26.3                     |
|              | S-8         | 39-41      | 17-003     | 14.1                     |
|              | S-9         | 44-46      | 17-003     | 8.8                      |
|              | S-10        | 49-51      | 17-003     | 6.3                      |
|              | S-11        | 54-56      | 17-003     | 4.9                      |
|              | S-12        | 59-61      | 17-003     | 8.0                      |
|              | S-13        | 64-66      | 17-003     | 7.7                      |
|              | S-14        | 69-69.4    | 17-003     | 11.6                     |

3rd Rock, LLC  
580 Olean Road  
East Aurora, NY 14052  
(716)655-4933  
(716)655-8638 fax



## Water Content Test Results by ASTM D2216

**Project:** New York State Thruway  
**EDI Project No.:** 6K16  
**Client:** Earth Dimensions, Inc.

**Project No:** 16-008  
**Date:** 12/15/16

| Borehole No. | Sample Nos. | Depth, fbg | Lab ID No. | Natural Water Content, % |
|--------------|-------------|------------|------------|--------------------------|
| FH-B-6       | S-1         | 3-5        | 16-534     | 9.5                      |
|              | S-2         | 8-10       | 16-534     | 6.8                      |
|              | S-3         | 13-15      | 16-534     | 7.0                      |
|              | S-4         | 18-20      | 16-534     | 26.9                     |
|              | S-5         | 23-25      | 16-534     | 25.4                     |
|              | S-6         | 28-30      | 16-534     | 34.3                     |
|              | S-7         | 33-35      | 16-534     | 9.4                      |
|              | S-8         | 38-40      | 16-534     | 7.8                      |
|              | S-9         | 43-45      | 16-534     | 7.2                      |
|              | S-10        | 48-50      | 16-534     | 9.4                      |
|              | S-11        | 53-55      | 16-534     | 6.9                      |
|              | S-12        | 59-61      | 16-534     | 7.1                      |
|              | S-13        | 63-65      | 16-534     | 6.9                      |
|              | S-14        | 68-68.5    | 16-534     | 7.4                      |
| FH-B-8       | S-1         | 3-5        | 16-535     | 15.6                     |
|              | S-2         | 8-10       | 16-535     | 10.5                     |
|              | S-3         | 13-15      | 16-535     | 7.1                      |
|              | S-4         | 18-20      | 16-535     | 7.7                      |
|              | S-5         | 23-25      | 16-535     | 3.8                      |
|              | S-6         | 28-30      | 16-535     | 10.5                     |
|              | S-7         | 33-35      | 16-535     | 7.8                      |
|              | S-8         | 38-40      | 16-535     | 8.2                      |
|              | S-9         | 43-45      | 16-535     | 11.0                     |
|              | S-10        | 48-50      | 16-535     | 7.9                      |

3rd Rock, LLC  
580 Olean Road  
East Aurora, NY 14052  
(716)655-4933  
(716)655-8638 fax

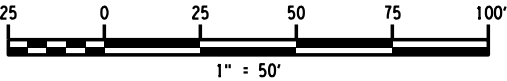
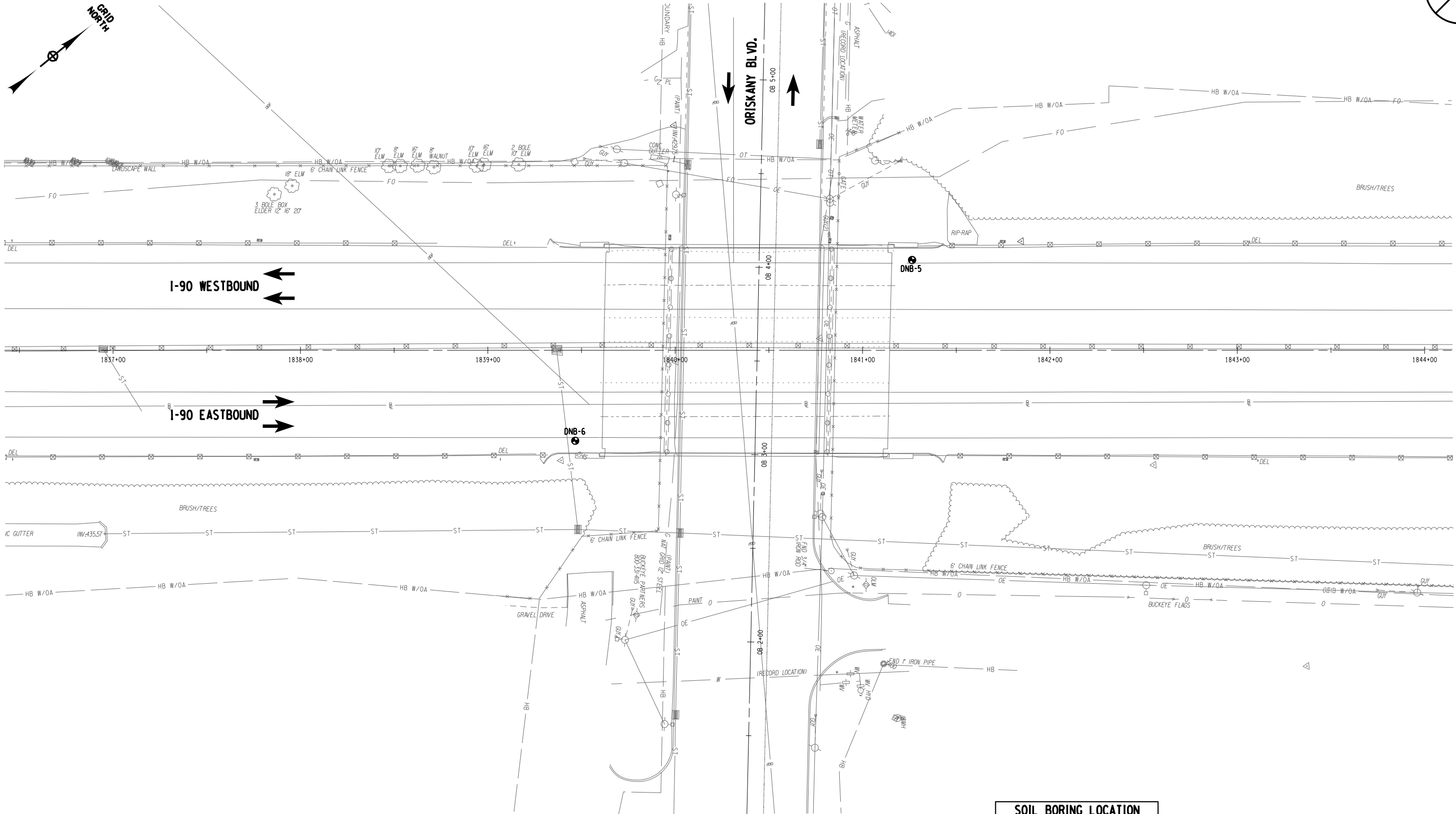
CHECKED BY:

DRAFTED BY:

CHECKED BY:

DESIGNED BY:


DESIGN SUPERVISOR:




**SOIL BORING LOCATION PLAN**  
SCALE: 1" = 50'

| SOIL BORING LOCATION |            |             |
|----------------------|------------|-------------|
| BORING               | LATITUDE   | LONGITUDE   |
| DNB-5                | 43.1301078 | -75.3005751 |
| DNB-6                | 43.1296622 | -75.3010377 |

| REVISIONS |             |    |      |
|-----------|-------------|----|------|
| DATE      | DESCRIPTION | BY | SYM. |
|           |             |    |      |
|           |             |    |      |
|           |             |    |      |
|           |             |    |      |



**Thruway Authority**



|   |                                       |
|---|---------------------------------------|
| TITLE OF PROJECT<br>I-90 EASTBOUND AND WESTBOUND OVER<br>ORISKANY BLVD. (BIN 5009929) | CONTRACT NUMBER:<br><b>TAB- 17-XX</b> |
| LOCATION OF PROJECT<br>SYRACUSE DIVISION<br>M.P. 238.22                               | DATE:<br><b>02/23/17</b>              |
| TITLE OF DRAWING<br><b>BORING LOCATION PLAN</b>                                       | DRAWING NUMBER:<br><b>BP-03</b>       |