



## Monthly Financial Report

March 2023  
Supplement



# Operating Results

---

## Operating Expenses

Category	Year-To-Date			Percent Change
	2022	2023	Change	
<b>Thruway Operating Expenses</b>				
Admin and General	\$2,501,464	\$2,712,342	\$210,878	8.4%
Information Technology	10,041,497	3,192,892	(6,848,605)	-68.2%
Engineering Services	1,436,409	1,457,018	20,609	1.4%
Maintenance & Operations				
Thruway Maintenance	28,070,221	26,546,848	(1,523,373)	-5.4%
Equipment Maintenance	8,122,681	8,738,893	616,212	7.6%
Traffic and Services	2,623,080	3,215,350	592,270	22.6%
Finance and Accounts	1,565,848	1,340,353	(225,495)	-14.4%
Revenue Management	24,528,081	22,440,113	(2,087,968)	-8.5%
General Charges *	25,176,223	26,332,611	1,156,388	4.6%
<b>Total Thruway Operating</b>	<b>\$104,065,504</b>	<b>\$95,976,420</b>	<b>(\$8,089,084)</b>	<b>-7.8%</b>
<b>Other Operating Expenses</b>				
<b>State Police**</b>	<b>\$14,841,158</b>	<b>\$15,455,999</b>	<b>\$614,841</b>	<b>4.1%</b>
<b>Total Other Operating Expenses</b>	<b>\$14,841,158</b>	<b>\$15,455,999</b>	<b>614,841</b>	<b>4.1%</b>
<b>Total Operating Expenses</b>	<b>\$118,906,662</b>	<b>\$111,432,419</b>	<b>(\$7,474,243)</b>	<b>-6.3%</b>

\* Includes changes relative to unfunded OPEB and Pension Adjustment and are as follows:

Pension Contributions	\$4,500,000	\$4,500,000	\$0	0.0%
Pension Adjustment LT liability and deferred Pension resources	0	\$0	\$0	-
Unfunded Retiree Health Insur. & Other Benefits	0	0	0	-
Funded Health Insurance & Other Benefits	16,704,234	17,832,282	1,128,048	6.8%
Social Security	2,501,027	2,437,097	(63,930)	-2.6%
Workers' Compensation Insurance	1,800,390	1,800,338	(52)	0.0%
Other General Charges	(329,428)	(237,106)	92,322	-28.0%
<b>Total General Charges</b>	<b>\$25,176,223</b>	<b>\$26,332,611</b>	<b>\$1,156,388</b>	<b>4.6%</b>

\*\* Reflects the State Police expenses that the Authority reimburses the State as part of the 2016/17 Approved State Budget as of 4/1/2016. This includes reimbursement for purchase of vehicles and equipment.

## Operating Revenues

Category	Year-To-Date			Percent Change
	2022	2023	Change	
<b>Toll Revenue</b>				
Passenger Revenue	\$171,509,149	\$178,328,064	\$6,818,915	4.0%
Commercial Revenue	83,291,437	92,362,405	9,070,968	10.9%
	88,217,712	85,965,659	(2,252,053)	-2.6%
<b>Toll Related Fees</b>				
E-ZPass Fees	17,325,859	15,807,221	(1,518,638)	-8.8%
Toll by Mail Fees	2,959,980	3,134,389	174,409	5.9%
Special Hauling	13,859,858	12,023,482	(1,836,376)	-13.2%
	506,021	649,350	143,329	28.3%
<b>Lease Revenues</b>				
Fiber Optic User Fees	2,933,245	3,558,428	625,183	21.3%
Service Areas	2,004,030	2,040,096	36,066	1.8%
	929,215	1,518,332	589,117	63.4%
<b>Other Revenues</b>	<b>795,468</b>	<b>239,366</b>	<b>(556,102)</b>	<b>-69.9%</b>
<b>Total Operating Revenue</b>	<b>\$192,563,721</b>	<b>\$197,933,079</b>	<b>\$5,369,358</b>	<b>2.8%</b>

\*\*\* Toll by Mail fee's are from the All Electronic Toll Collection operation at the Gov. Mario M. Cuomo Bridge Barrier that started April 2016 and for the North & South Grand Island Bridge Barriers in March 2018, Harriman 2018, Yonkers November 2018, New Rochelle

## Operating Budget vs. Actual

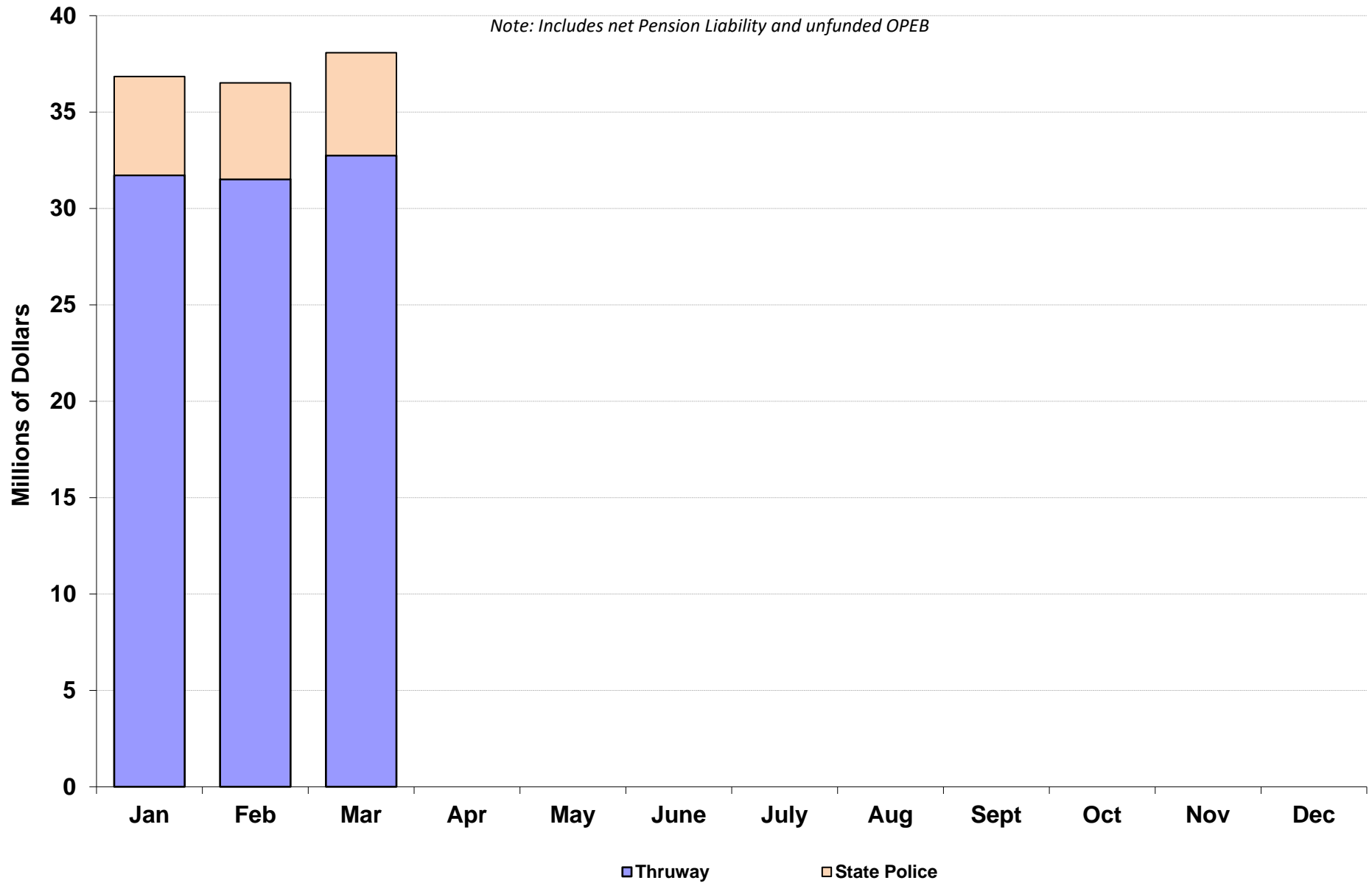
	Year-To-Date			
	2023 Budget	Actual	Difference	Percent Difference
<b>Total Operating Expenses:</b>				
Thruway Operating Expenses *	99,123,645	\$95,959,685	(\$3,163,960)	-3.2%
Claims, Envir. Reserves	250,000	0	(250,000)	-100.0%
Other Operating Expenses- State Police **	17,226,734	15,455,999	(1,770,735)	-10.3%
Total Operating Expenses	\$116,600,378	\$111,415,684	(\$5,184,694)	-4.4%
<b>Total Operating Revenues:</b>				
Net Toll Revenue ***	\$167,398,702	\$178,328,064	\$10,929,362	6.5%
Toll Related Fees	15,608,219	\$15,807,221	199,002	1.3%
Lease Revenues	3,537,500	\$3,558,428	20,928	0.6%
Other Revenues	2,855,000	\$8,381,236	5,526,236	193.6%
Total Operating Revenue	\$189,399,421	\$206,074,949	\$16,675,528	8.8%

\* Excludes unfunded OPEB and adjustment of net Pension liability and changes in Inflows/outflows adopted in 2015 in accordance with GASB 68.

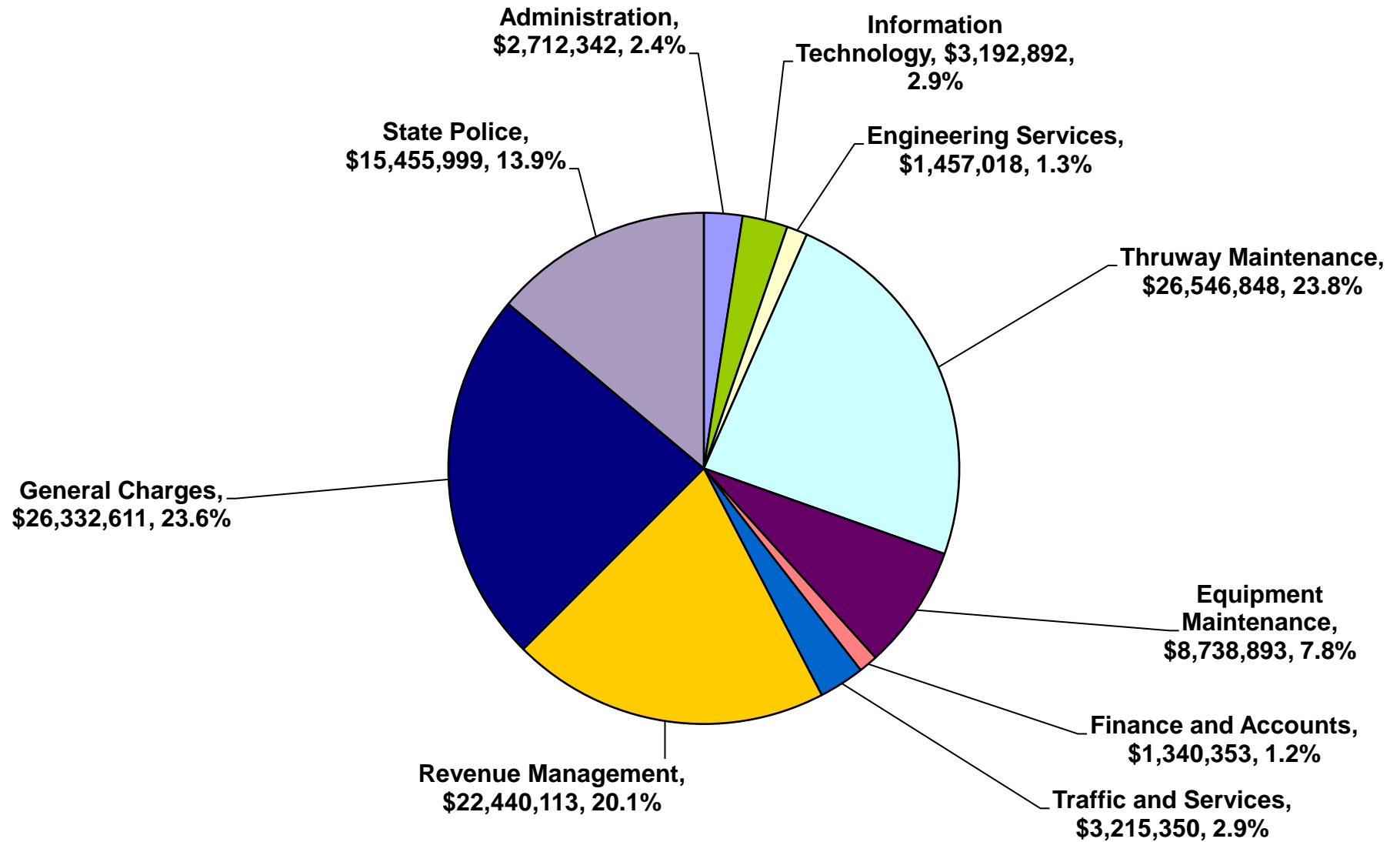
\*\* The State's 2016/17 Budget provides the Authority reimburse for State Police - Troop T costs as of 4/1/2016. This includes reimbursement for equipment and vehicles that are typically billed later in year.

\*\*\* Includes the adjustment of accounts receivable for Tolls by Mail which is outstanding and thus not available until paid.

# 2023 YTD Operating Expenses

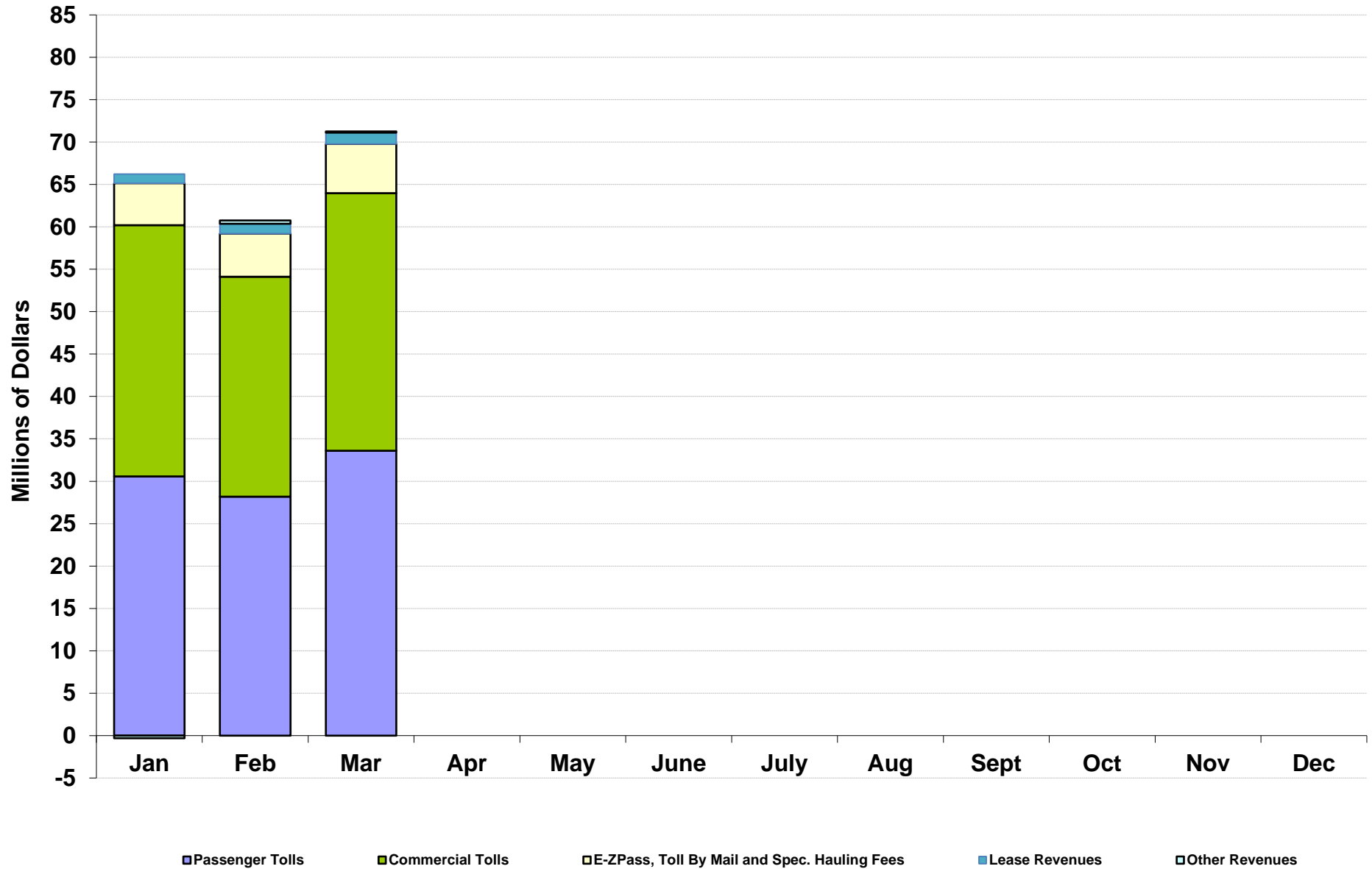


# 2023 YTD Operating Expenses

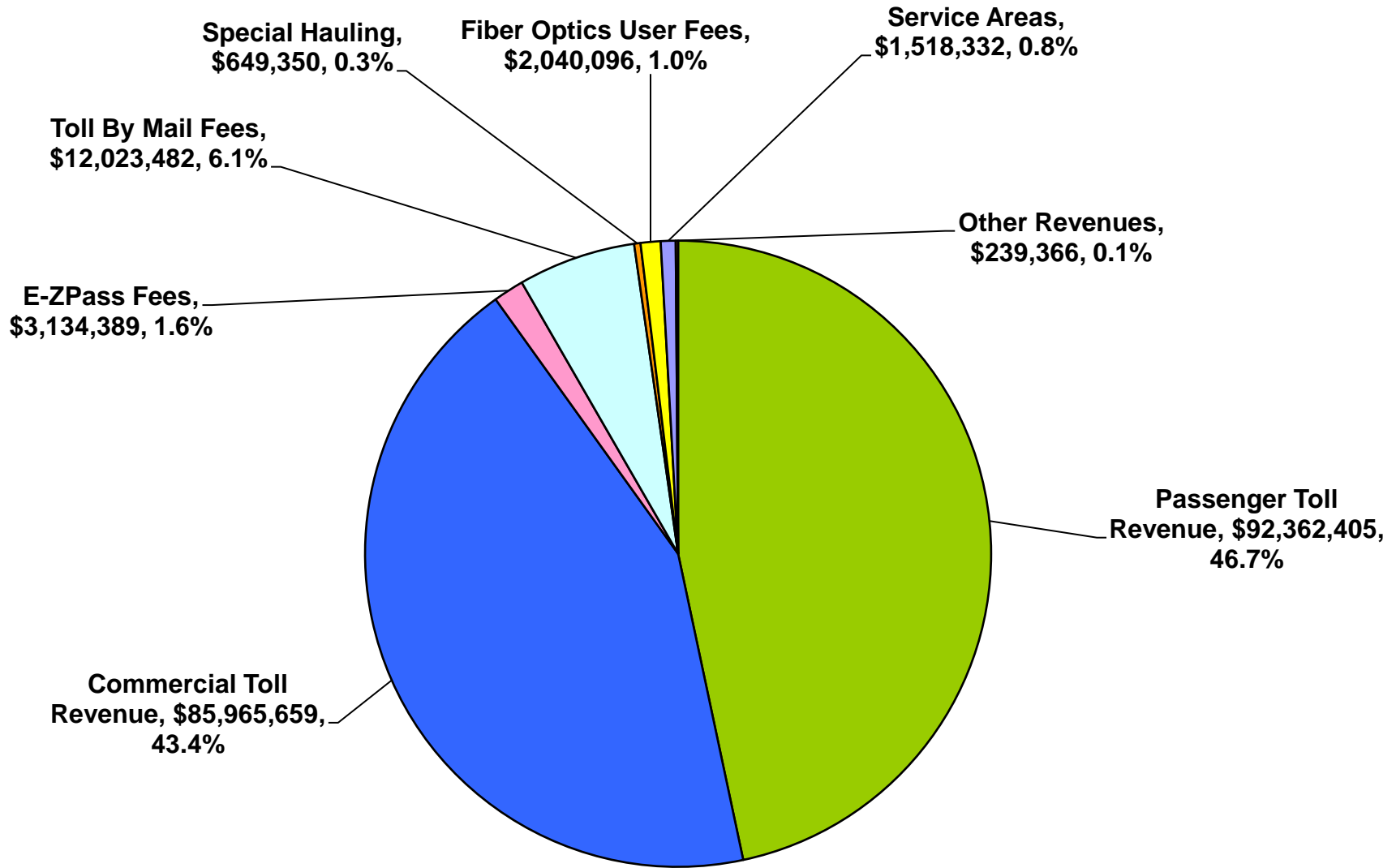


*Note: General Charges include net Pension liability and unfunded OPEB*

# 2023 YTD Operating Revenues

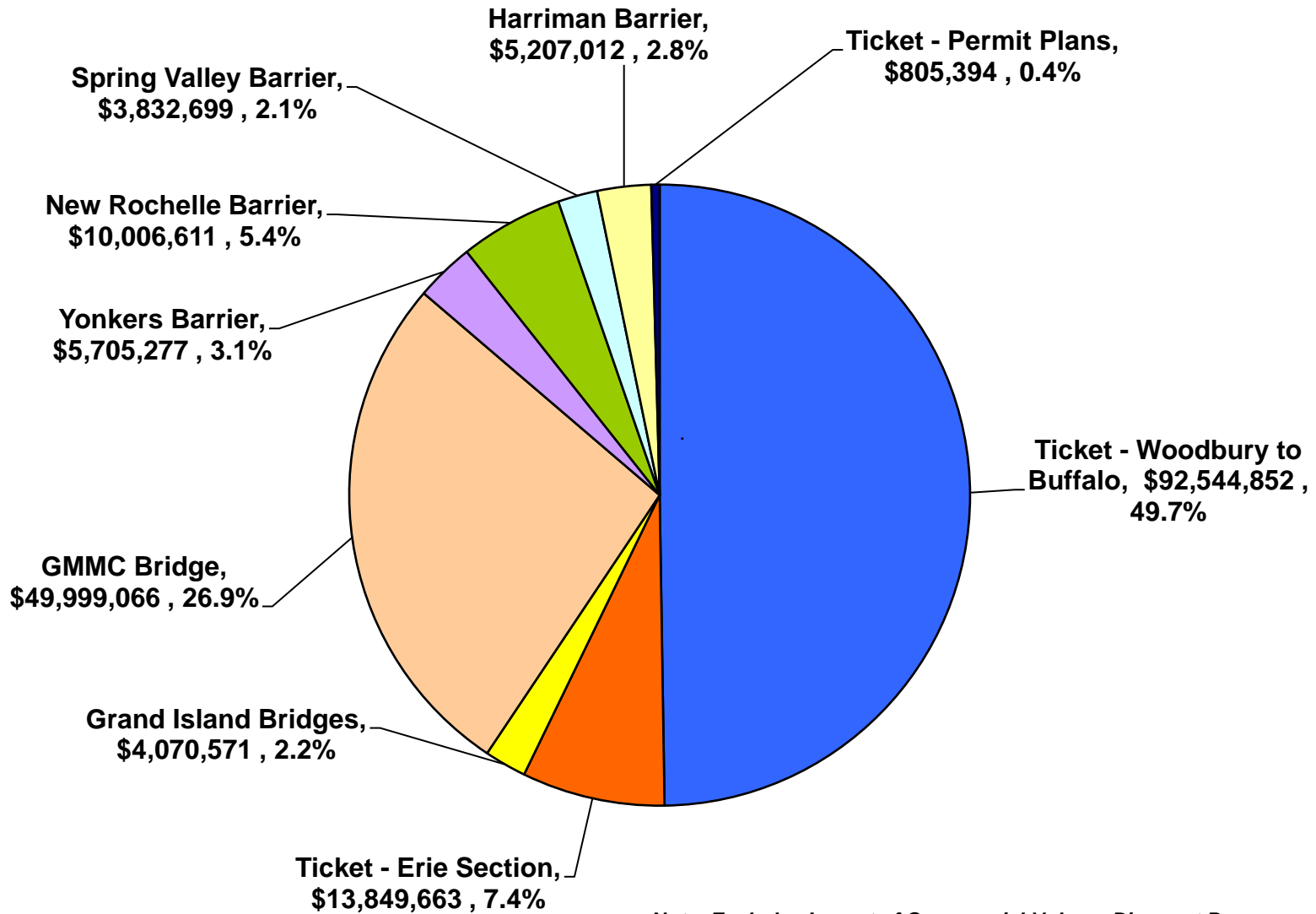


# 2023 YTD Operating Revenue



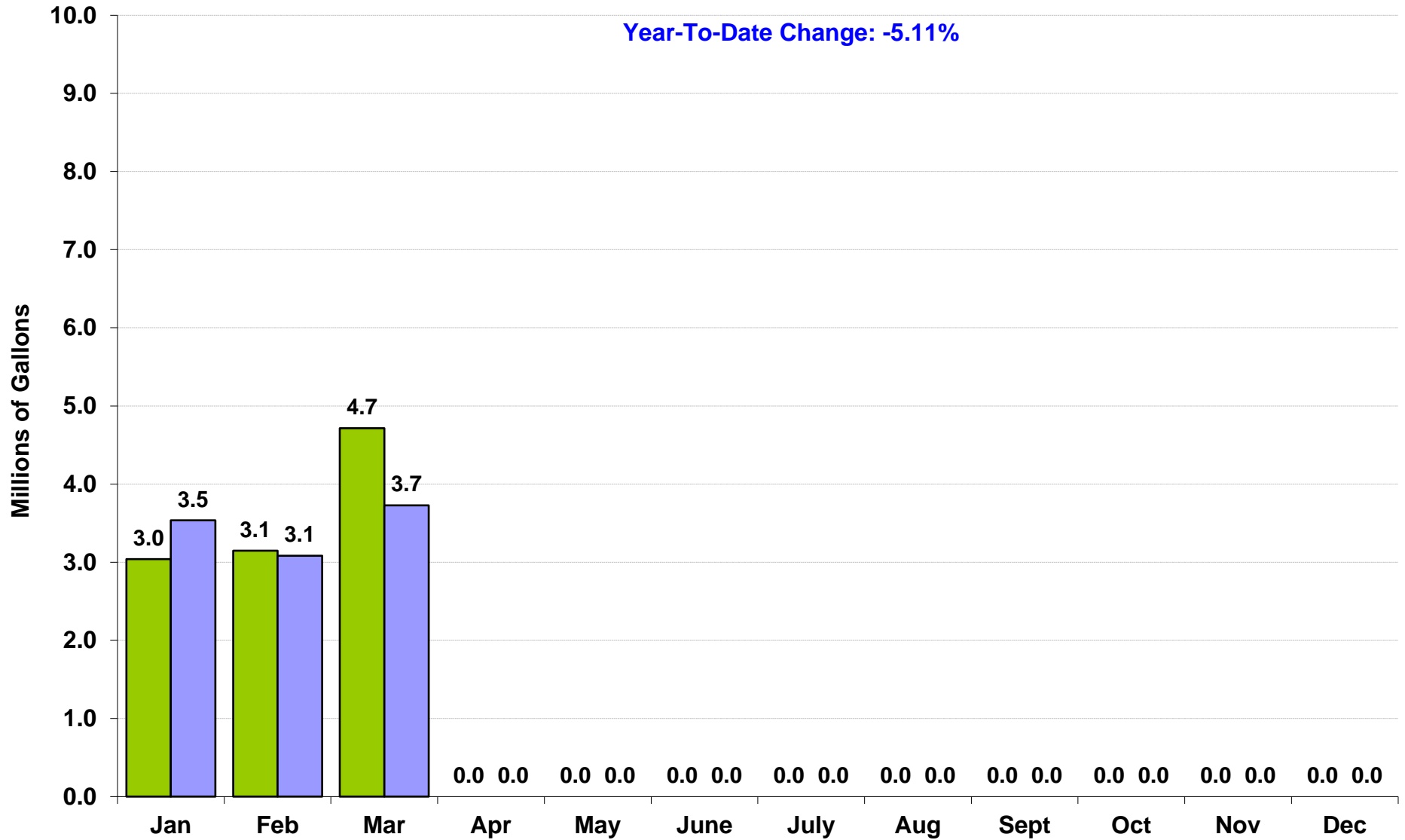


# 2023 YTD Toll Collections, By Location

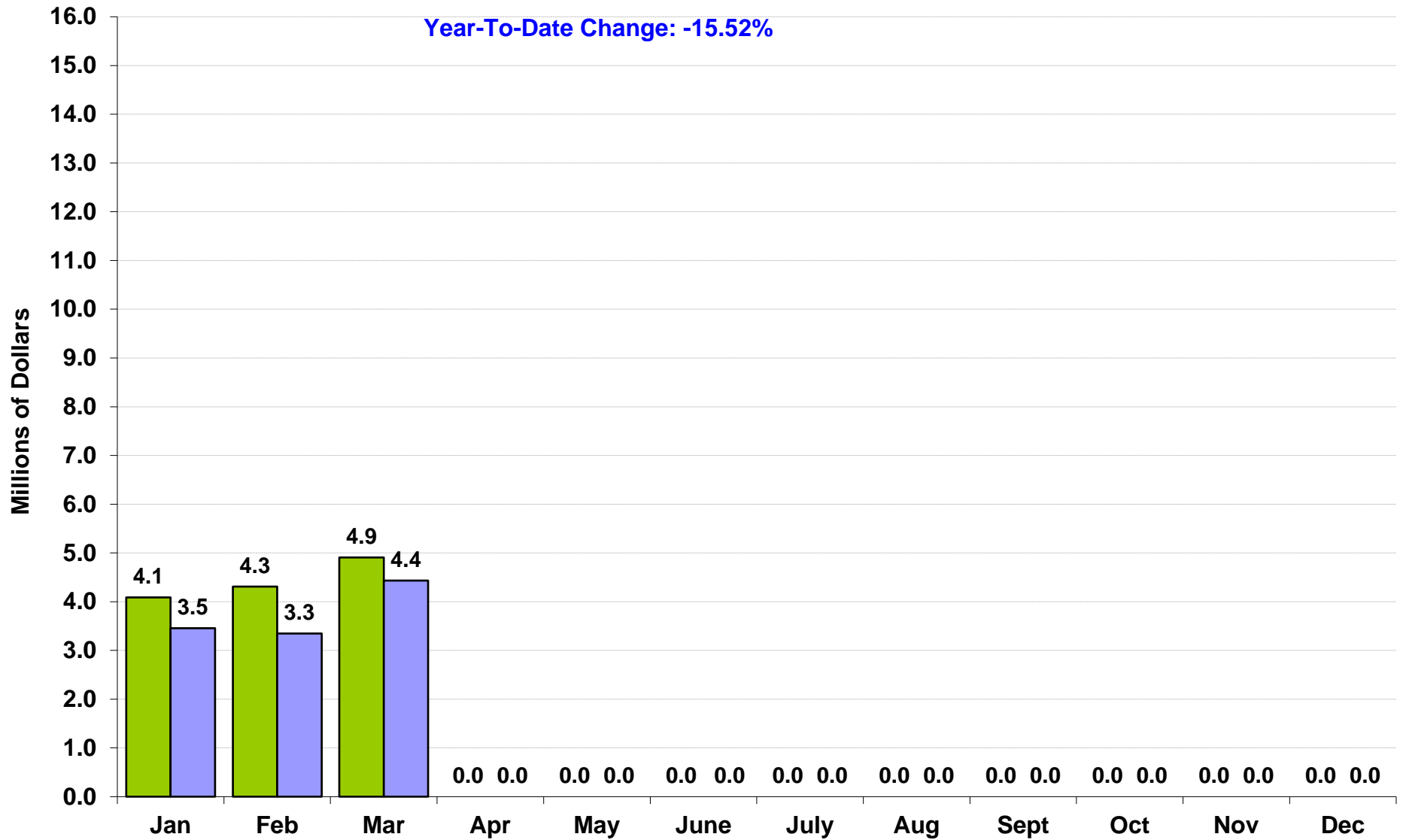


*Note: Excludes Impact of Commercial Volume Discount Program.*

# Fuel Deliveries to Service Areas



# Restaurant Sales at Service Plazas



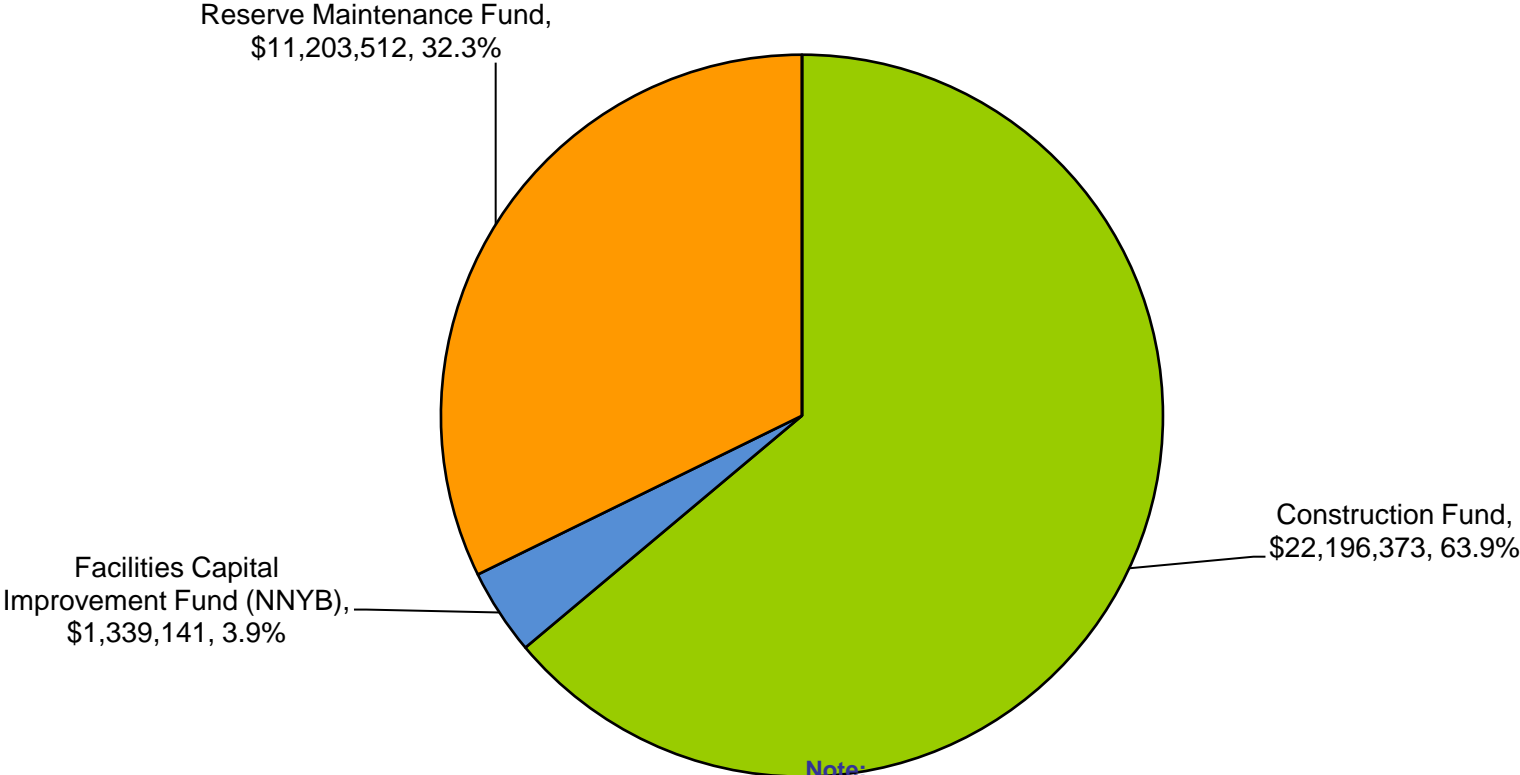
# **Thruway Capital Program**

---

**(Includes New NY Bridge Project)**

# 2023 YTD Capital Program Expenses, by Fund

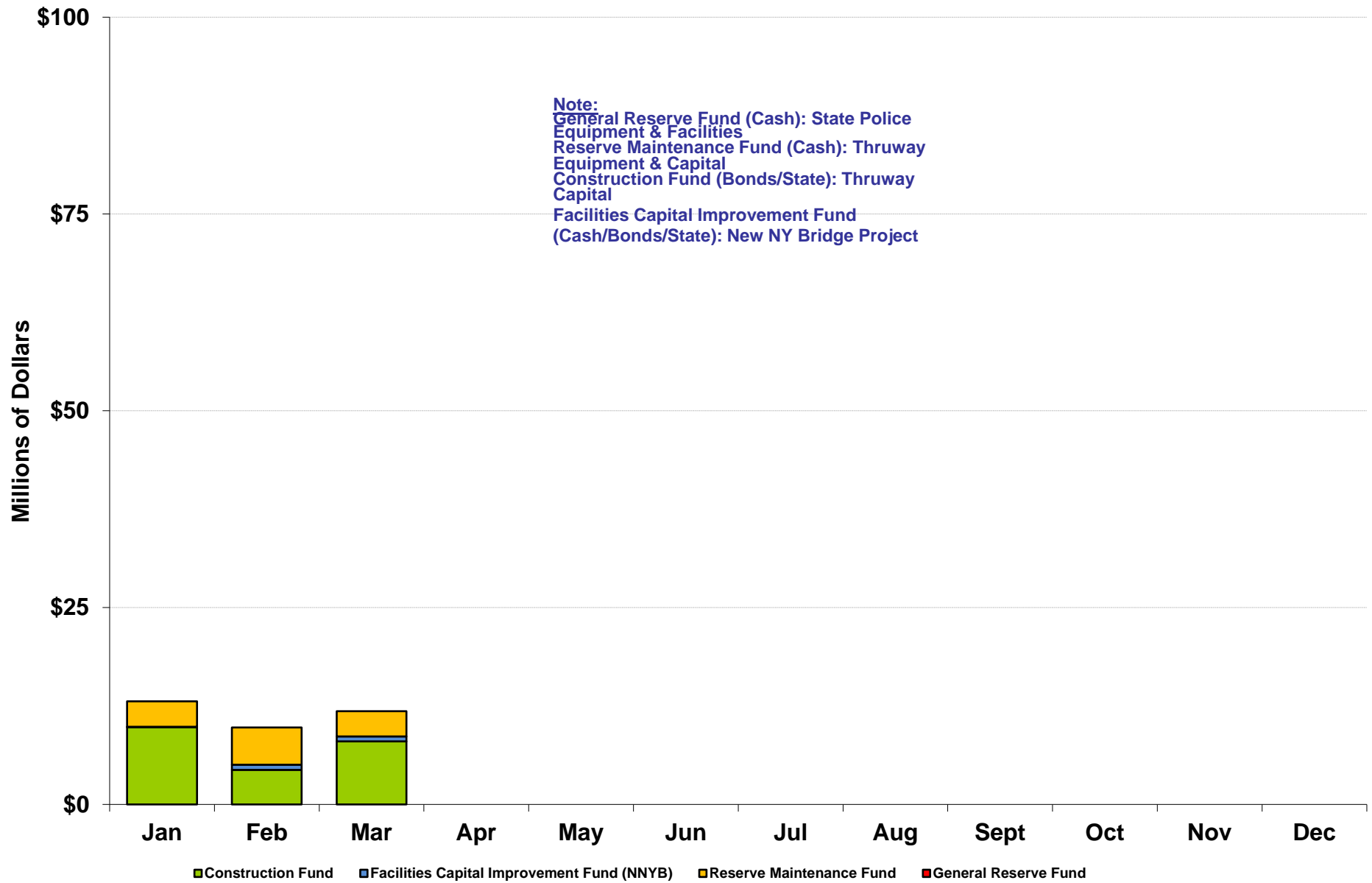
YTD Total Expenses = \$34.7 million



**Note:**  
General Reserve Fund (Cash): State Police Equipment & Facilities  
Reserve Maintenance Fund (Cash): Thruway Equipment & Capital  
Construction Fund (Bonds): Thruway Capital  
Facilities Capital Improvement Fund (Cash/Bonds): New NY Bridge Project

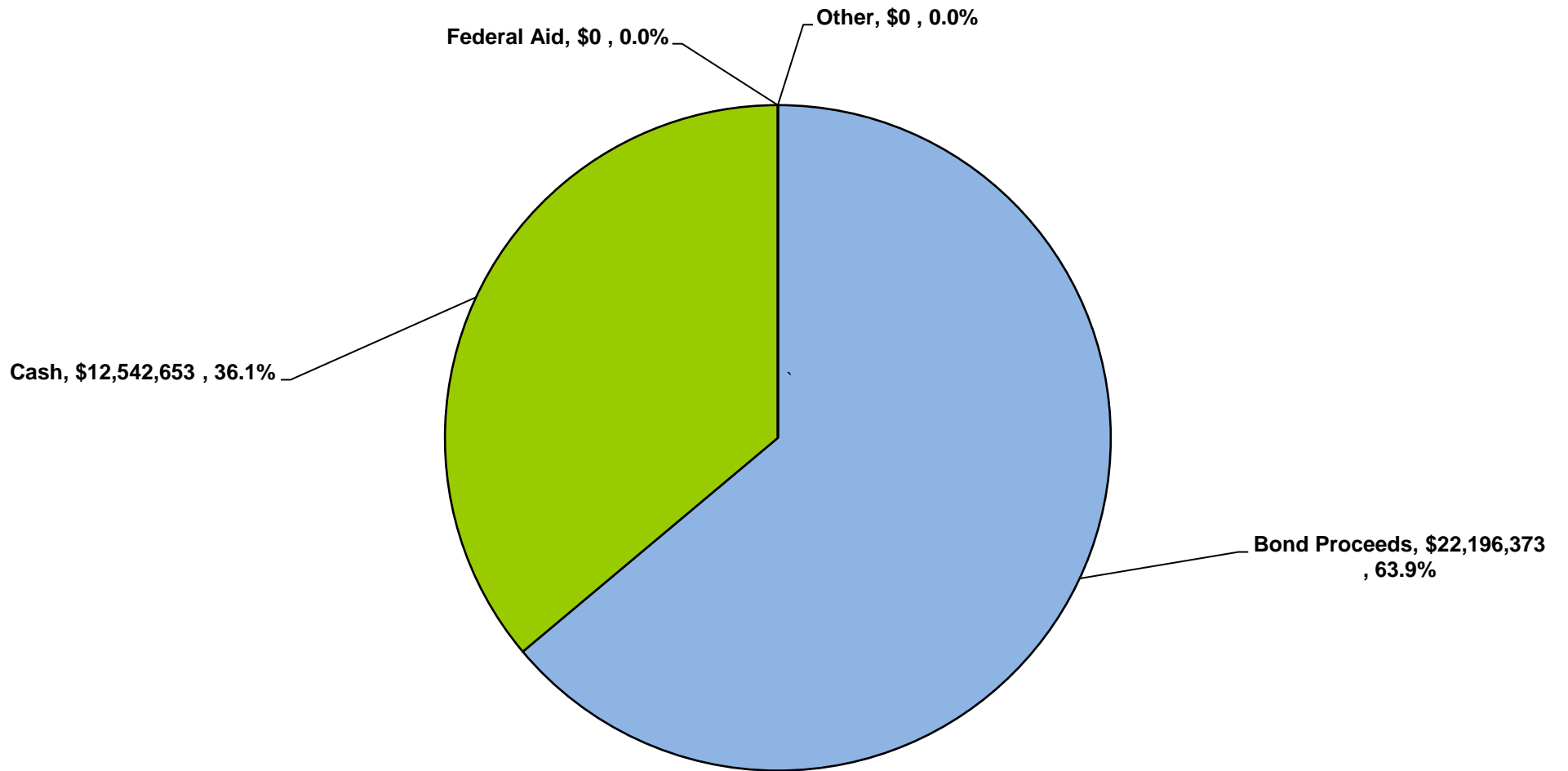
# 2023 YTD Capital Program Expenses, By Fund

YTD Total Expenses = \$34.7 million



# 2023 YTD Capital Funding Sources

YTD Total Expenses = \$34.7 million



# 2023 YTD Capital Expenses, By Fund

YTD Total Expenses = \$34.7 million

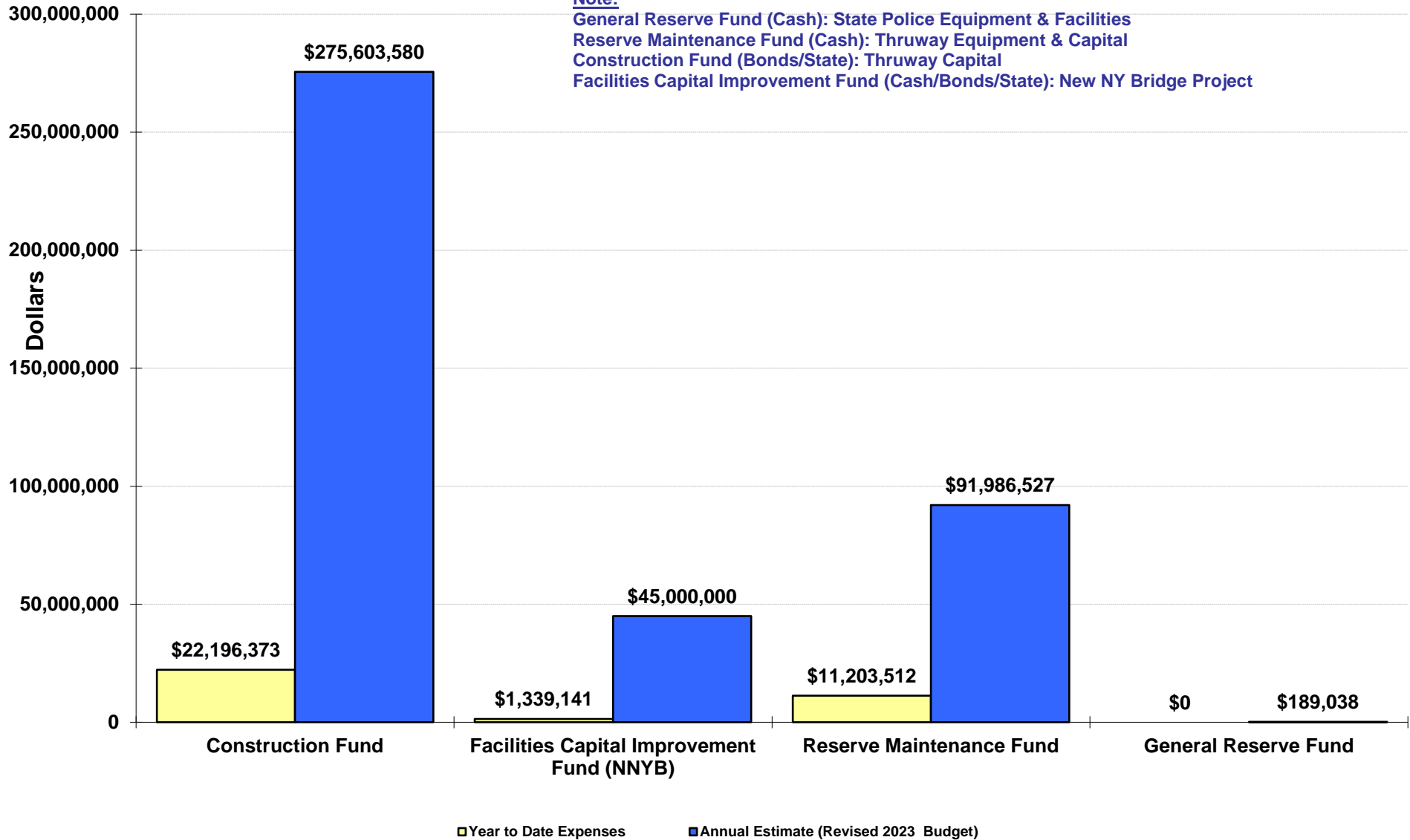
**Note:**

General Reserve Fund (Cash): State Police Equipment & Facilities

Reserve Maintenance Fund (Cash): Thruway Equipment & Capital

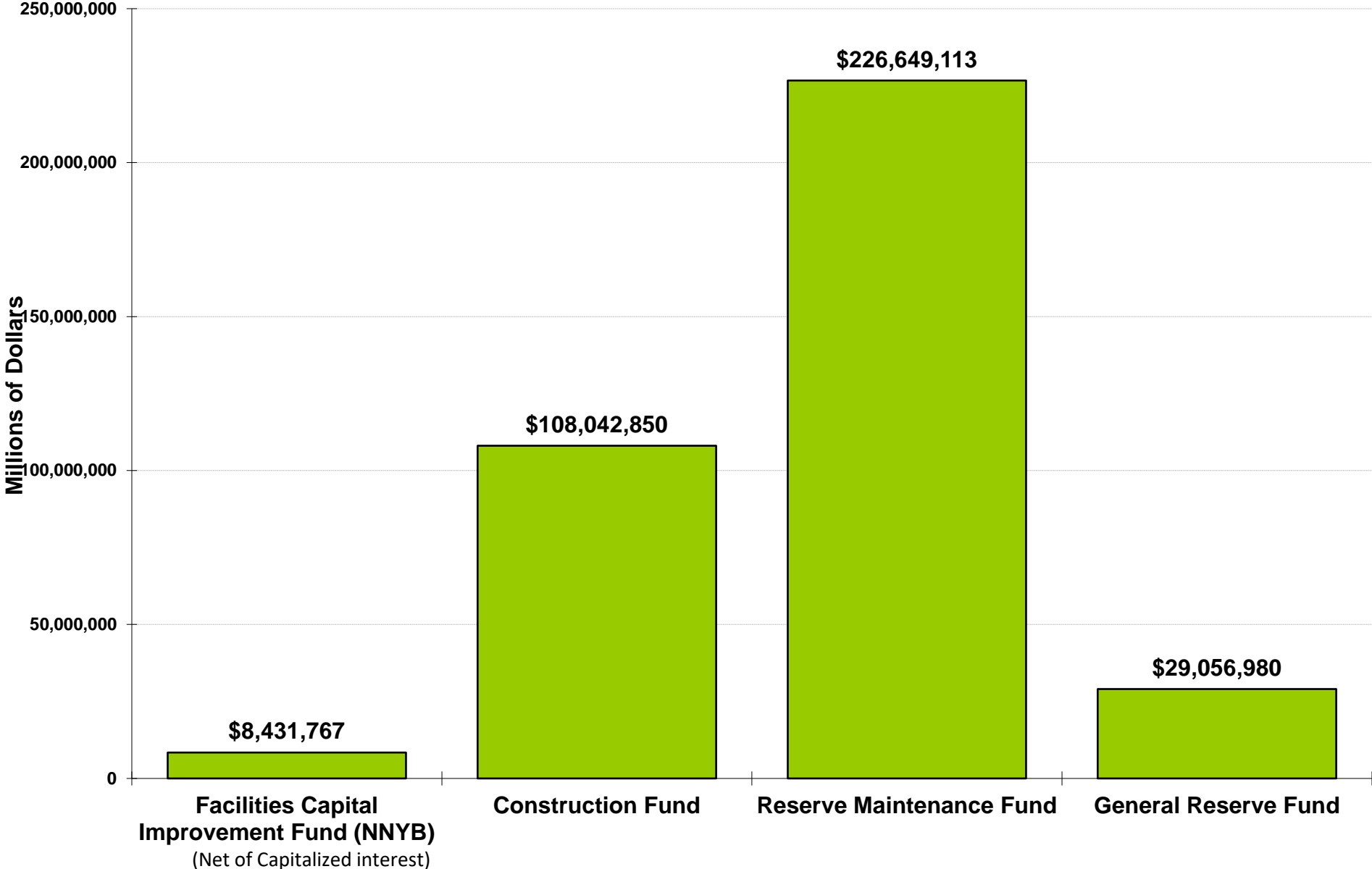
Construction Fund (Bonds/State): Thruway Capital

Facilities Capital Improvement Fund (Cash/Bonds/State): New NY Bridge Project



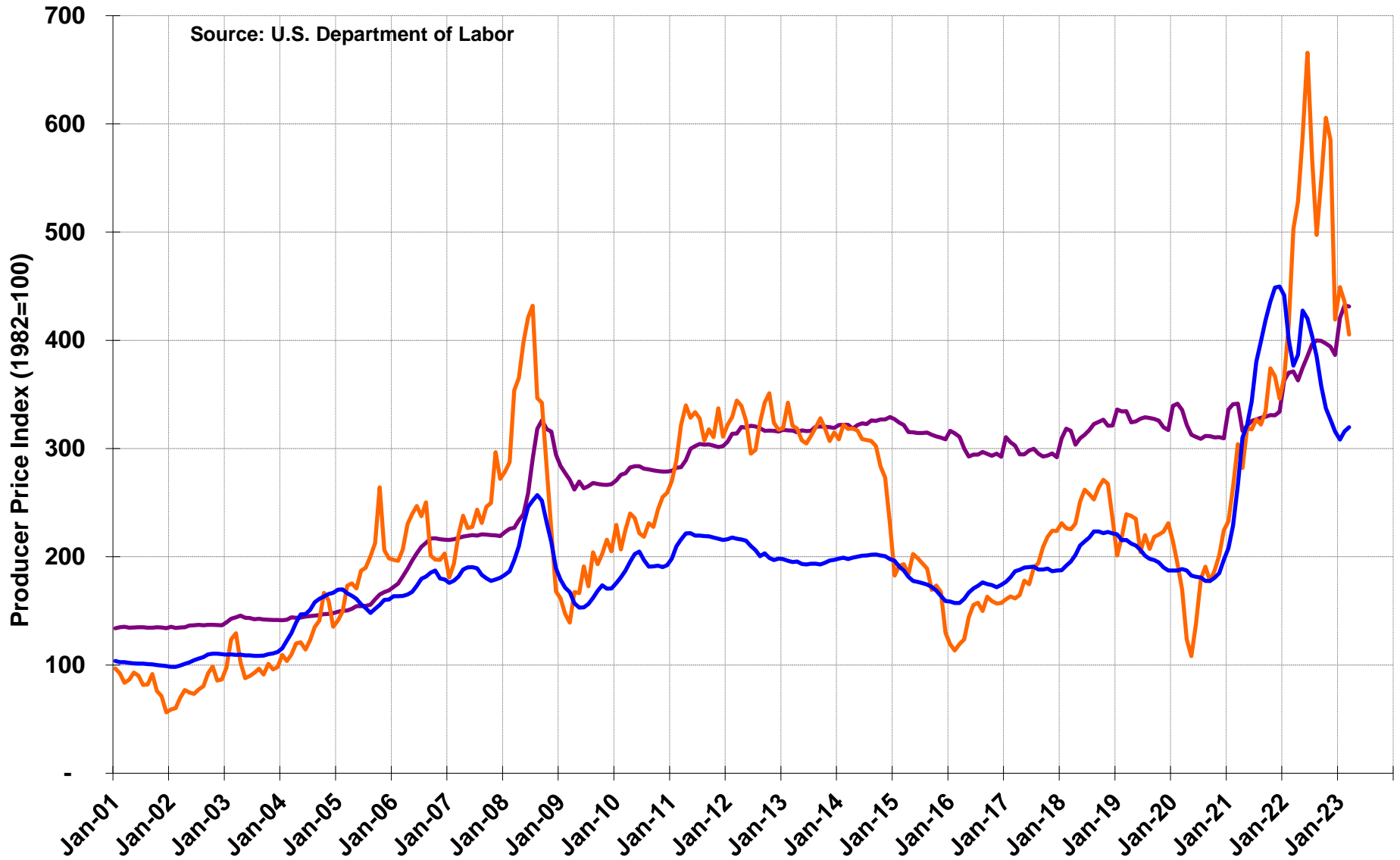


# 2023 Capital Fund Balances at End of Month



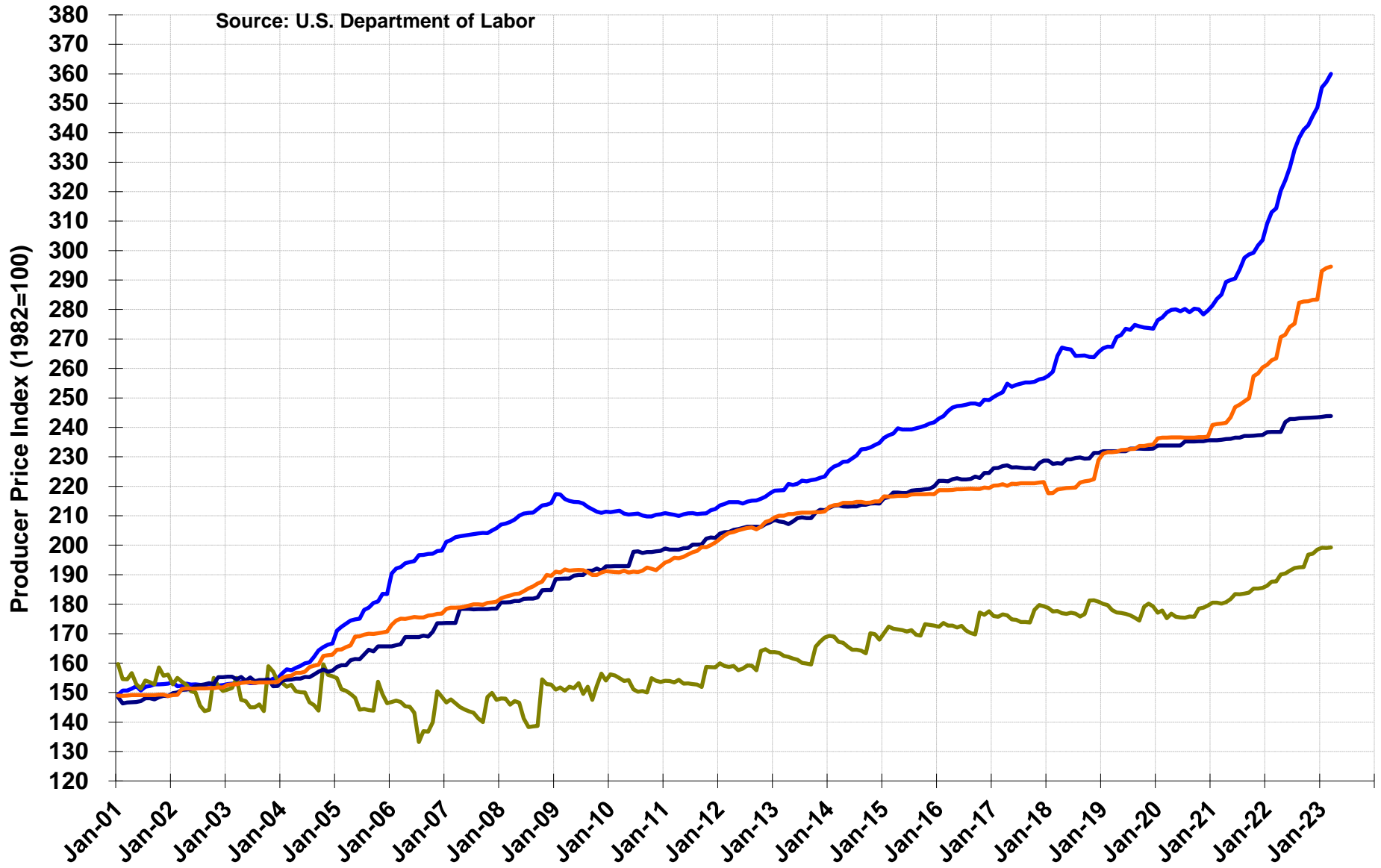
# Producer Prices: Construction Inputs

Asphalt Paving Mixtures    No. 2 Diesel Fuel    Steel Mill Products

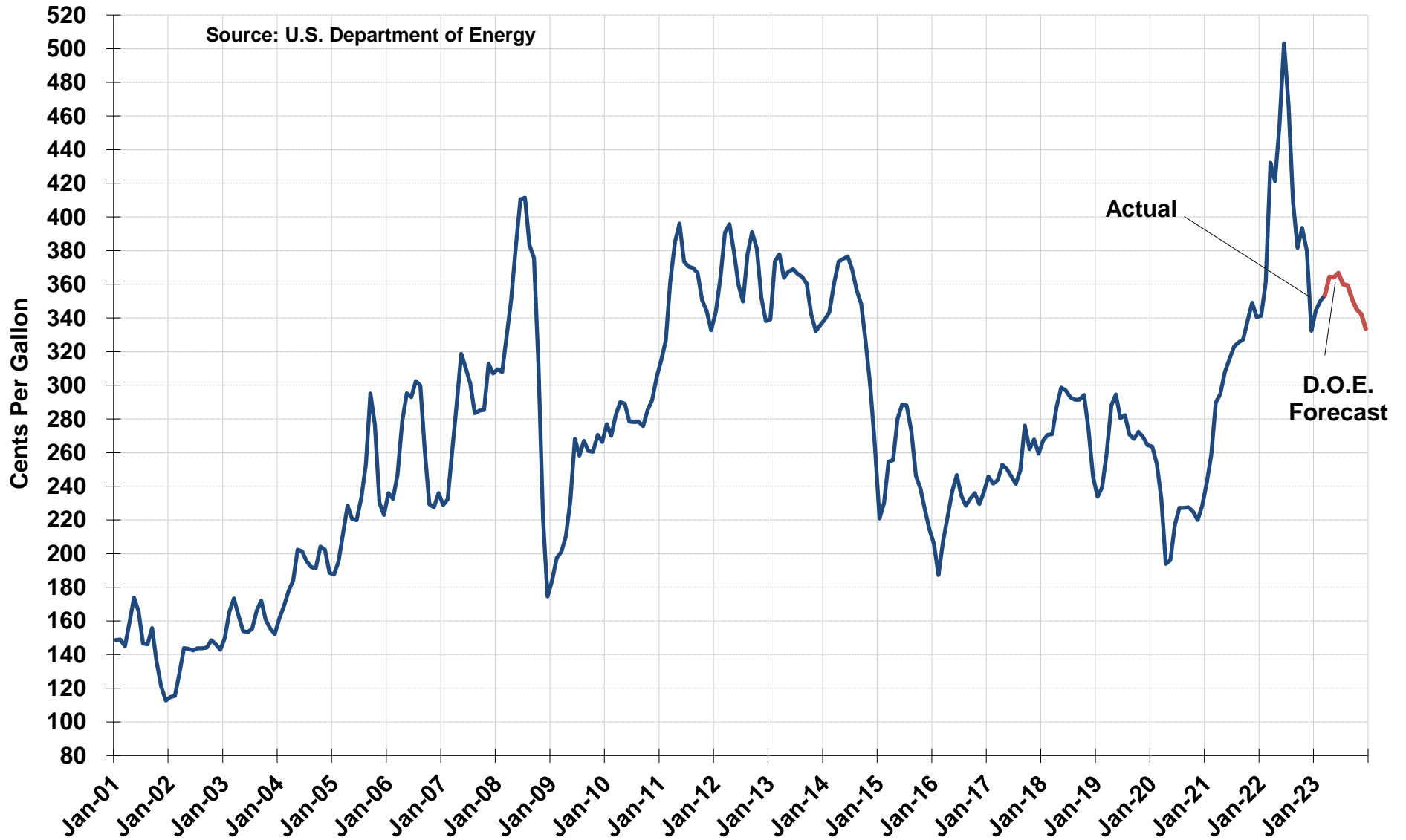


# Producer Prices: Construction Inputs

Concrete Products    Light Motor Trucks    Heavy Trucks    Const. Machinery & Equipment



# Average Retail Price of Gasoline in U.S. All Grades



# Thruway Traffic Information

---

# Thruway Traffic Information

	Year-To-Date			Percent Change
	2022	2023	Change	
<b>Revenue Trips - Location</b>				
Toll Ticket System				
Woodbury to Williamsville	52,323,083	54,758,239	2,435,156	4.7%
Erie Section	4,559,690	4,838,348	278,658	6.1%
Total Ticket System	56,882,773	59,596,587	2,713,814	4.8%
Bridges and Barriers				
Grand Island South	2,535,420	2,734,420	199,000	7.8%
Grand Island North	2,032,860	2,214,260	181,400	8.9%
GMMC Bridge	5,922,357	6,281,575	359,218	6.1%
Yonkers	3,872,331	4,062,826	190,495	4.9%
New Rochelle (I-95)	4,409,663	4,739,906	330,243	7.5%
Spring Valley (Commercial Only)	523,080	516,540	(6,540)	-1.3%
Harriman	3,706,826	3,858,791	151,965	4.1%
Total Bridges and Barriers	23,002,537	24,408,318	1,405,781	6.1%
Total Trips	79,885,310	84,004,905	4,119,595	5.2%
Non-Revenue Trips	512,597	498,192	(14,405)	-2.8%
Total Revenue Trips	79,372,713	83,506,713	4,134,000	5.2%

Revenue Trips - Type	2022	2023	Change	
Passenger	64,873,970	69,264,444	4,390,474	6.8%
Commercial	14,498,743	14,242,269	(256,474)	-1.8%
Total Revenue Trips	79,372,713	83,506,713	4,134,000	5.2%

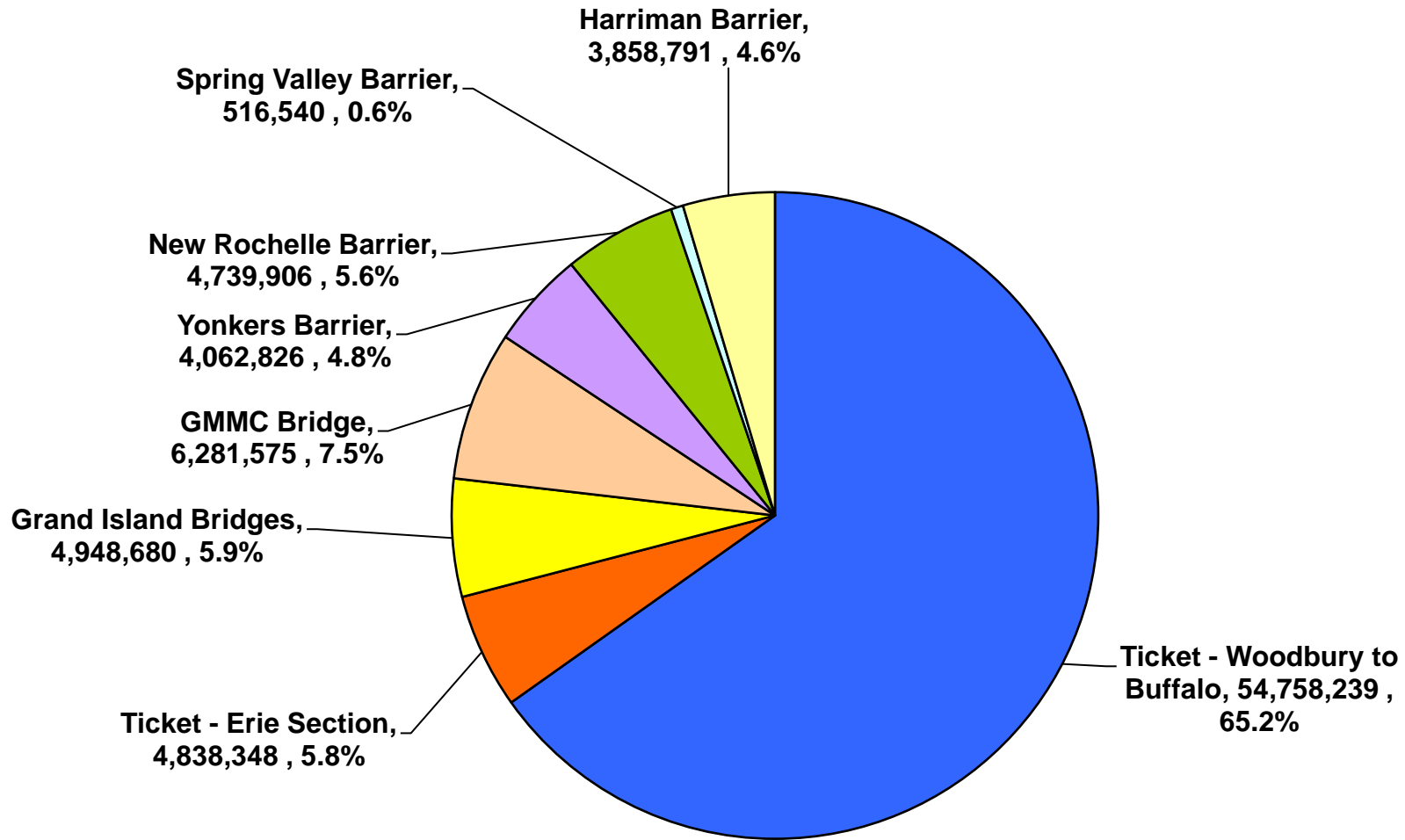
## **Miles Traveled - Revenue Trips**

Toll Ticket System	1,073,092,260	1,218,532,645	145,440,385	13.55%
NY Division Bridge/Barriers	335,008,489	354,775,666	19,767,177	5.90%
Williamsville-Lackawanna	77,092,094	82,267,909	5,175,815	6.71%
Grand Island Bridges	45,799,400	49,600,680	3,801,280	8.30%
Total Revenue Trip Miles	1,530,992,243	1,705,176,900	174,184,657	11.38%

## **Average Trip Length (Miles) - All Trips - Ticketed System**

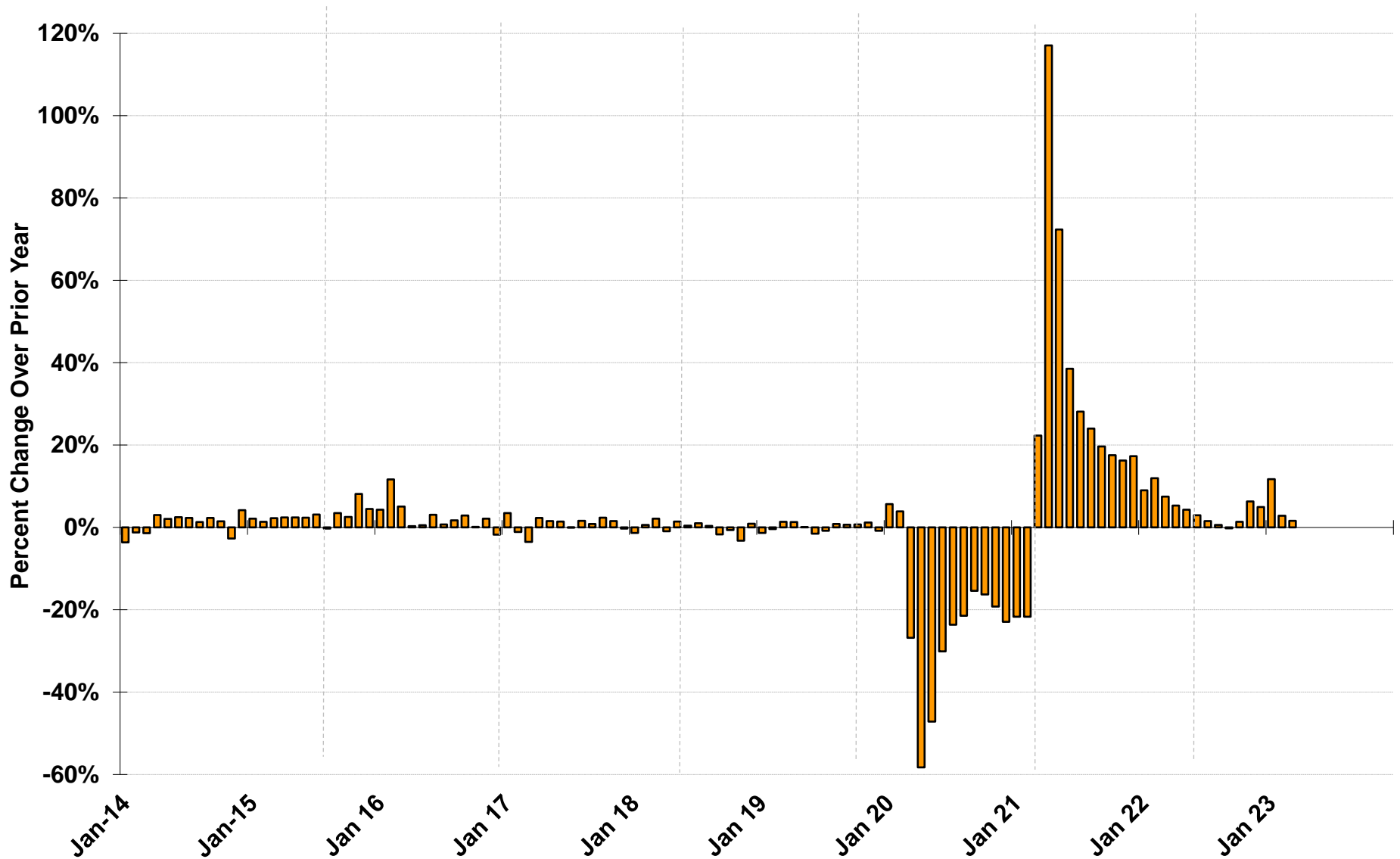
Passenger	18.88	19.10	0.22	1.17%
Commercial	25.05	25.83	0.78	3.11%
Overall	20.21	20.38	0.17	0.84%

# 2023 YTD Total Thruway Trips, By Location



# Percent Change in Monthly Thruway Traffic

Total Passenger and Commercial Revenue Trips

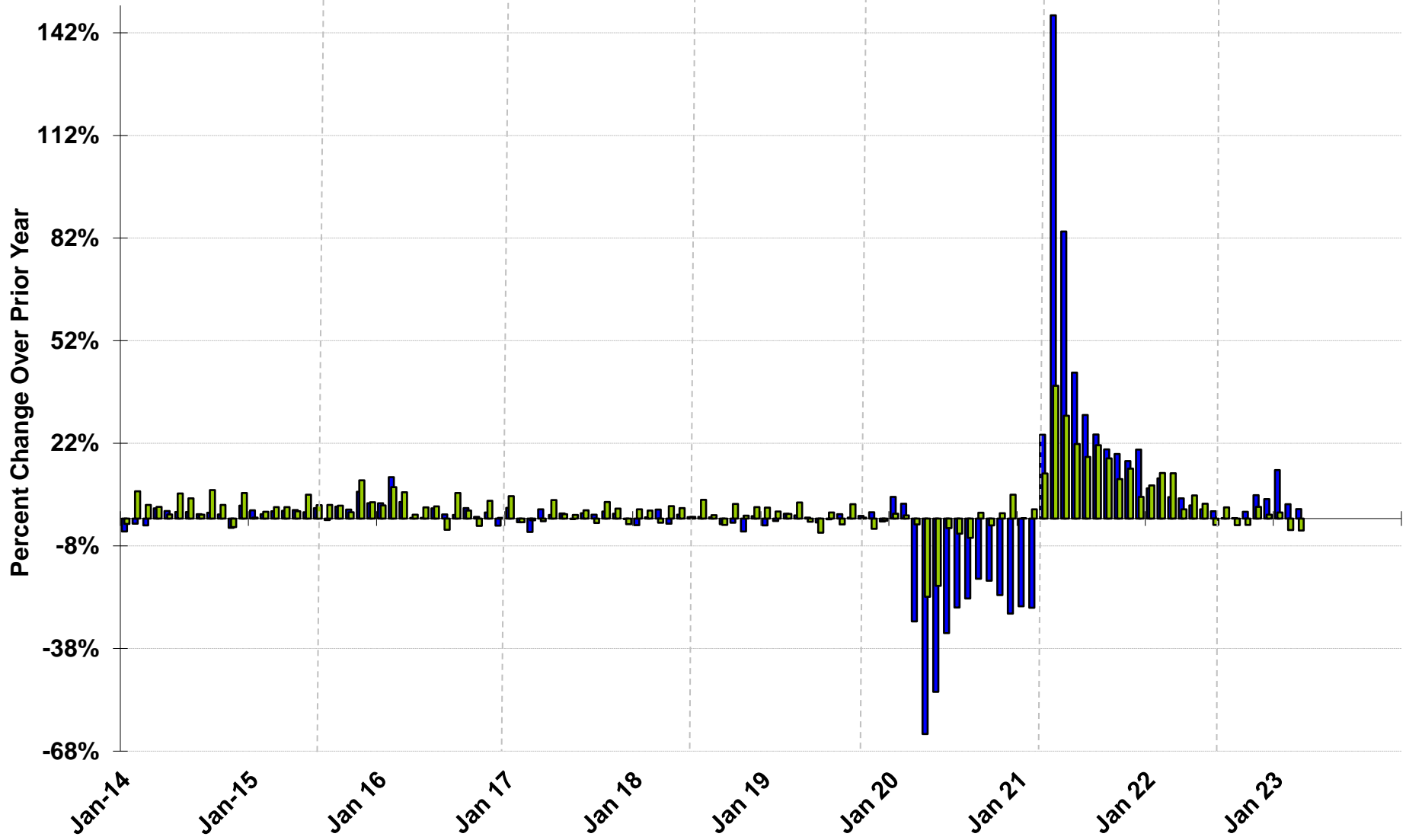




# Percent Change in Monthly Thruway Traffic

By Passenger and Commercial Revenue Trips

■ Passenger ■ Commercial



## Operating Expenses and Revenues (Variance from 2023 Budget)

