



## Monthly Financial Report

May 2021  
Supplement



# Operating Results

---

## Operating Expenses

Category	Year-To-Date			Percent Change
	2020	2021	Change	
<b>Thruway Operating Expenses</b>				
Admin and General	\$9,795,659	\$9,638,133	(\$157,526)	-1.6%
Engineering Services	2,342,304	2,501,665	159,361	6.8%
Maintenance Engineering				
Thruway Maintenance	34,676,946	37,816,341	3,139,395	9.1%
Equipment Maintenance	10,719,934	11,619,824	899,890	8.4%
Finance and Accounts	2,974,629	2,441,966	(532,663)	-17.9%
Operations				
Traffic and Services	3,651,108	3,854,611	203,503	5.6%
Toll Collection	38,452,840	34,837,170	(3,615,670)	-9.4%
General Charges *	39,194,978	40,707,999	1,513,021	3.9%
<b>Total Thruway Operating</b>	<b>\$141,808,398</b>	<b>\$143,417,709</b>	<b>\$1,609,311</b>	<b>1.1%</b>
<b>Other Operating Expenses</b>				
<b>State Police**</b>	<b>\$23,249,310</b>	<b>\$24,394,383</b>	<b>\$1,145,073</b>	<b>4.9%</b>
<b>Total Other Operating Expenses</b>	<b>\$23,249,310</b>	<b>\$24,394,383</b>	<b>1,145,073</b>	<b>4.9%</b>
<b>Total Operating Expenses</b>	<b>\$165,057,708</b>	<b>\$167,812,092</b>	<b>\$2,754,384</b>	<b>1.7%</b>

\* Includes changes relative to unfunded OPEB and Pension Adjustment (See Notes C and D of Monthly Statement) and are as follows:

Pension Contributions	\$9,908,750	\$8,893,335	(\$1,015,415)	-10.2%
Pension Adjustment LT liability and deferred Pension resources	0	\$0	\$0	-
Unfunded Retiree Health Insur. & Other Benefits	0	0	0	-
Funded Health Insurance & Other Benefits	26,756,198	26,308,011	(448,187)	-1.7%
Social Security	4,432,951	3,880,062	(552,889)	-12.5%
Workers' Compensation Insurance	3,733,750	3,000,000	(733,750)	-19.7%
Other General Charges	(5,636,671)	(1,373,409)	4,263,262	-75.6%
<b>Total General Charges</b>	<b>\$39,194,978</b>	<b>\$40,707,999</b>	<b>\$1,513,021</b>	<b>3.9%</b>

\*\* Reflects the State Police expenses that the Authority reimburses the State as part of the 2016/17 Approved State Budget as of 4/1/2016. This includes reimbursement for purchase of vehicles and equipment.

## Operating Revenues

Category	Year-To-Date			Percent Change
	2020	2021	Change	
<b>Toll Revenue</b>	<b>\$226,184,815</b>	<b>\$275,551,933</b>	<b>\$49,367,118</b>	<b>21.8%</b>
Passenger Revenue	113,122,809	138,197,567	25,074,758	22.2%
Commercial Revenue	113,062,006	137,354,366	24,292,360	21.5%
<b>Concession Revenue</b>	<b>2,325,184</b>	<b>1,576,841</b>	<b>(748,343)</b>	<b>-32.2%</b>
Gasoline Revenue	633,197	675,553	42,356	6.7%
Restaurant Revenue	1,691,987	901,288	(790,699)	-46.7%
<b>E-ZPass Revenue</b>	<b>7,622,331</b>	<b>5,281,727</b>	<b>(2,340,604)</b>	<b>-30.7%</b>
<b>Toll By Mail Fee's ***</b>	<b>8,094,085</b>	<b>6,242,807</b>	<b>(1,851,278)</b>	<b>-22.9%</b>
<b>Fiber Optics User Fees</b>	<b>58,765</b>	<b>3,750,576</b>	<b>3,691,811</b>	<b>6282.3%</b>
<b>Rental Income</b>	<b>2,229,397</b>	<b>751,831</b>	<b>(1,477,566)</b>	<b>-66.3%</b>
<b>Interest Earnings</b>	<b>2,697,286</b>	<b>68,723</b>	<b>(2,628,563)</b>	<b>-97.5%</b>
<b>Special Hauling Permits</b>	<b>837,283</b>	<b>861,977</b>	<b>24,694</b>	<b>2.9%</b>
<b>Sundry Revenue</b>	<b>466,803</b>	<b>641,243</b>	<b>174,440</b>	<b>37.4%</b>
<b>Total Operating Revenue</b>	<b>\$250,515,949</b>	<b>\$294,727,658</b>	<b>\$44,211,709</b>	<b>17.6%</b>

\*\*\* Toll by Mail fee's are from the All Electronic Toll Collection operation at the Gov. Mario M. Cuomo Bridge Barrier that started April 2016 and for the North & South Grand Island Bridge Barriers in March 2018, Harriman 2018, Yonkers November 2018, New Rochelle

## Operating Budget vs. Actual

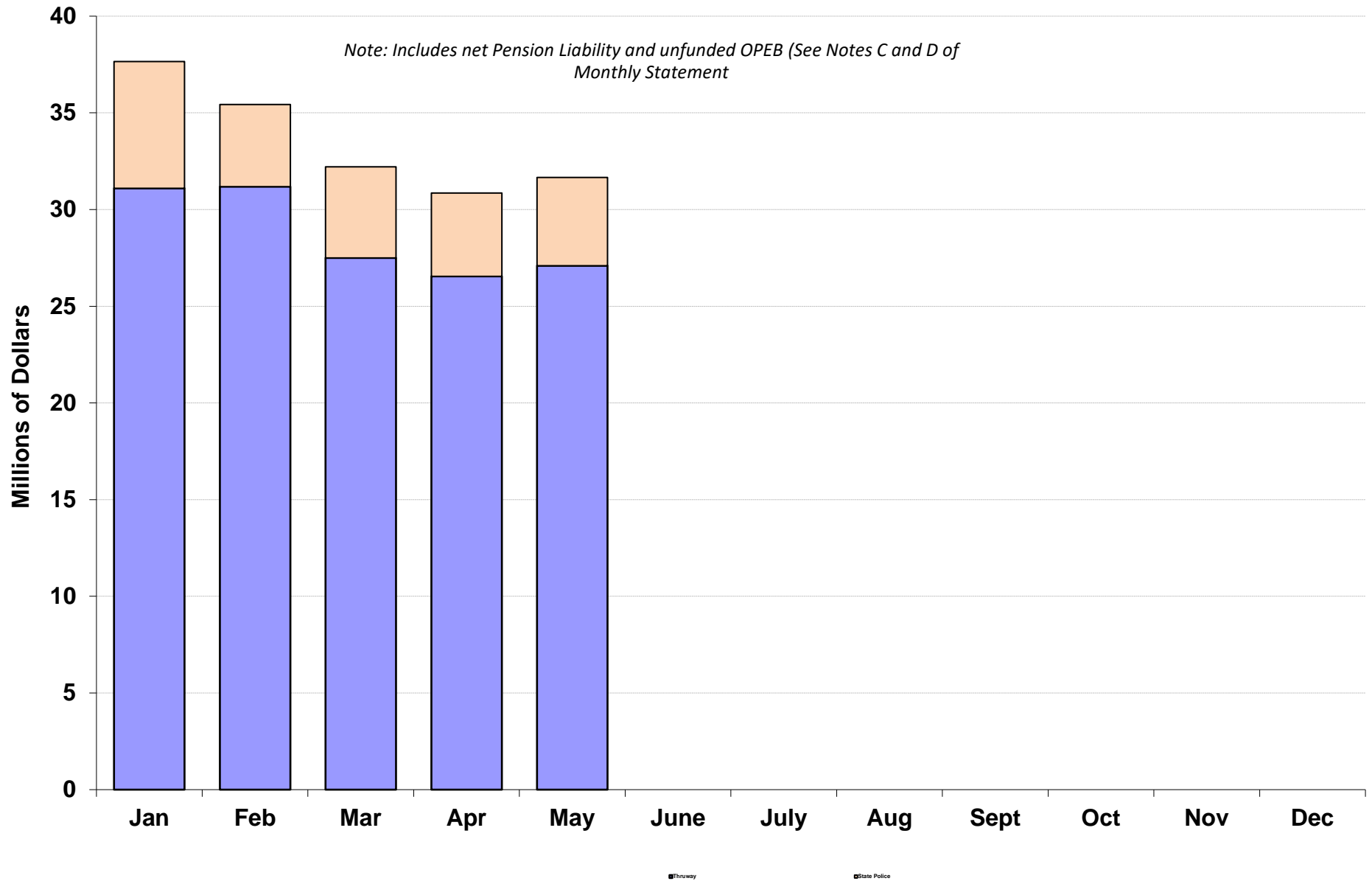
	Year-To-Date			Percent Difference
	2021 Budget	Actual	Difference	
<b>Total Operating Expenses:</b>				
Thruway Operating Expenses *	\$137,978,241	\$143,198,743	\$5,220,502	3.8%
Claims, Envir. Reserves and AET trans.	416,667	0	(416,667)	-100.0%
Other Operating Expenses- State Police **	24,988,227	24,394,383	(593,844)	-2.4%
Total Operating Expenses	\$163,383,135	\$167,593,126	\$4,209,991	2.6%
<b>Total Operating Revenues:</b>				
Toll Revenue ***	\$271,057,393	\$275,551,933		
Adjust to Cash basis w/ AET receivable		(10,187,028)		
Net Toll Revenue ***	\$271,057,393	\$265,364,905	(\$5,692,488)	-2.1%
Concession Revenue	1,692,324	\$1,576,841	(115,483)	-6.8%
E-ZPass and Tolls By Mail fee's	23,787,671	\$11,524,534	(12,263,137)	-51.6%
Sundry, Interest & Special Hauling Revenue	6,193,275	\$6,048,334	(144,941)	-2.3%
Total Operating Revenue	\$302,730,664	\$284,514,614	(\$18,216,049)	-6.0%

\* Excludes unfunded OPEB (See Note D of Monthly Statement) and adjustment of net Pension liability and changes in Inflows/outflows adopted in 2015 in accordance with GASB 68 (see Note C).

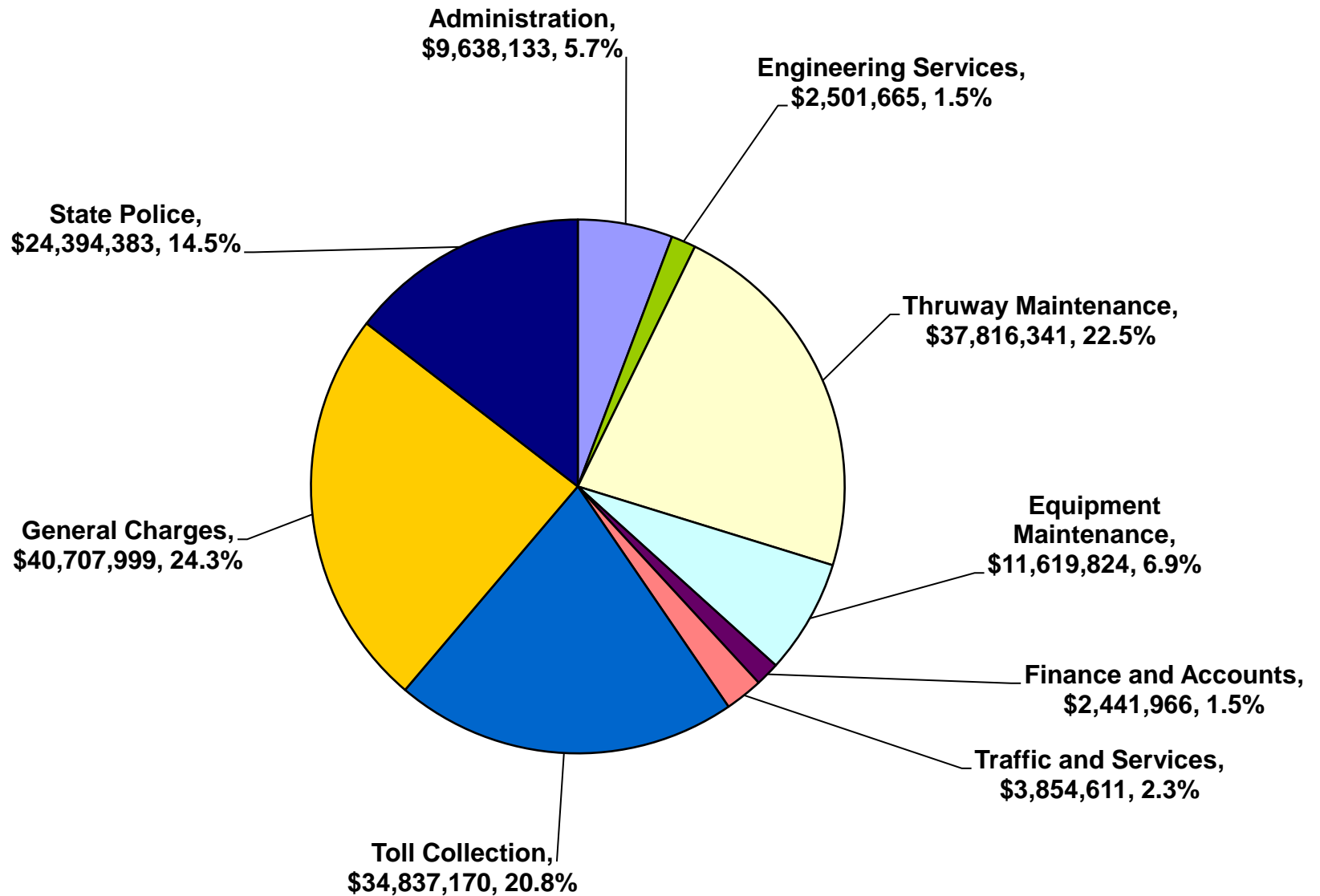
\*\* The State's 2016/17 Budget provides the Authority reimburse for State Police - Troop T costs as of 4/1/2016. This includes reimbursement for equipment and vehicles that are typically billed later in year.

\*\*\* Includes the adjustment of accounts receivable for Tolls by Mail which is outstanding and thus not available until paid. In addition, Stantec's projections factors in the delay of receipt of Toll's by Mail revenues at All Electronic Toll locations.

# 2021 YTD Operating Expenses

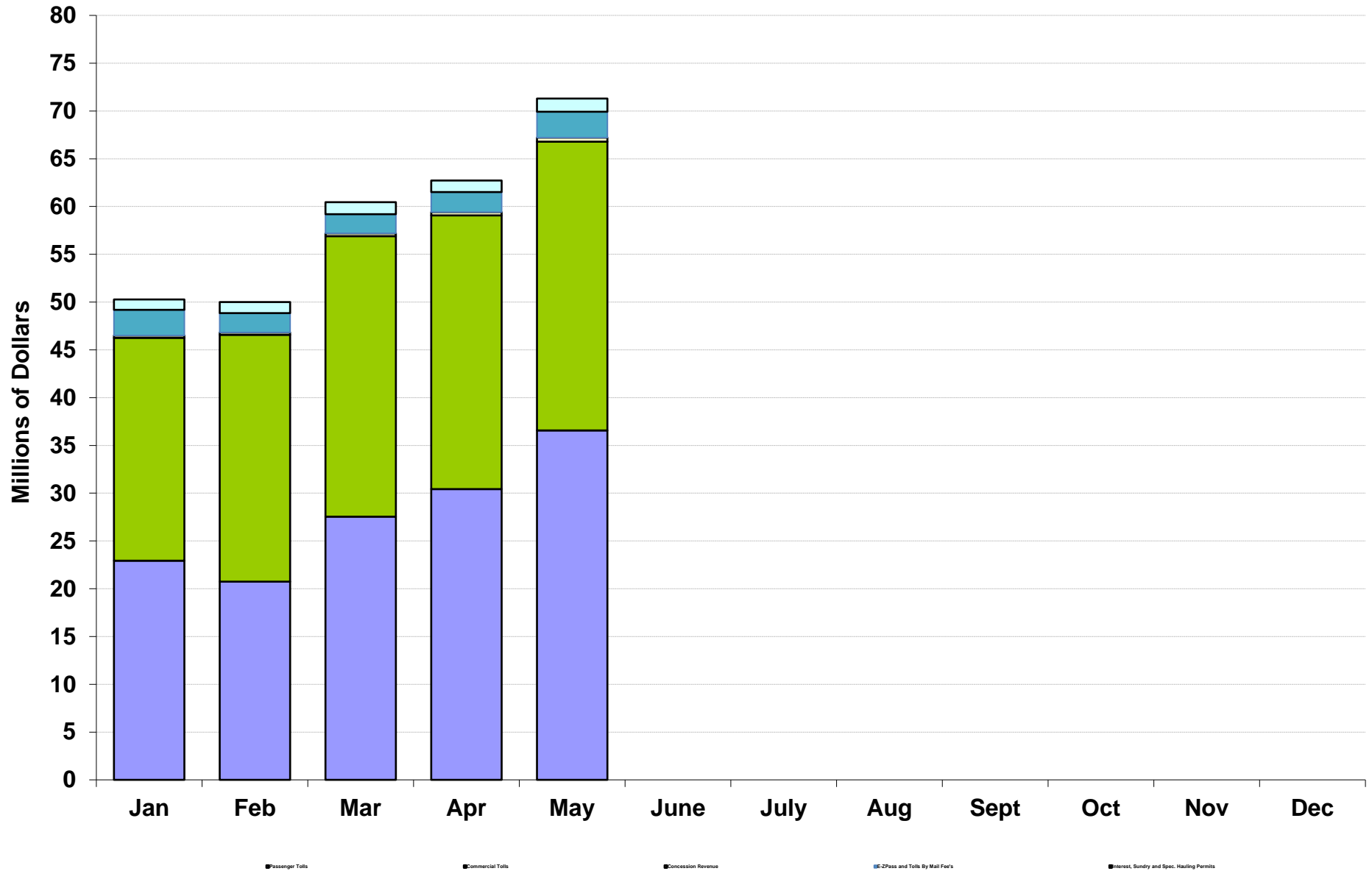


# 2021 YTD Operating Expenses

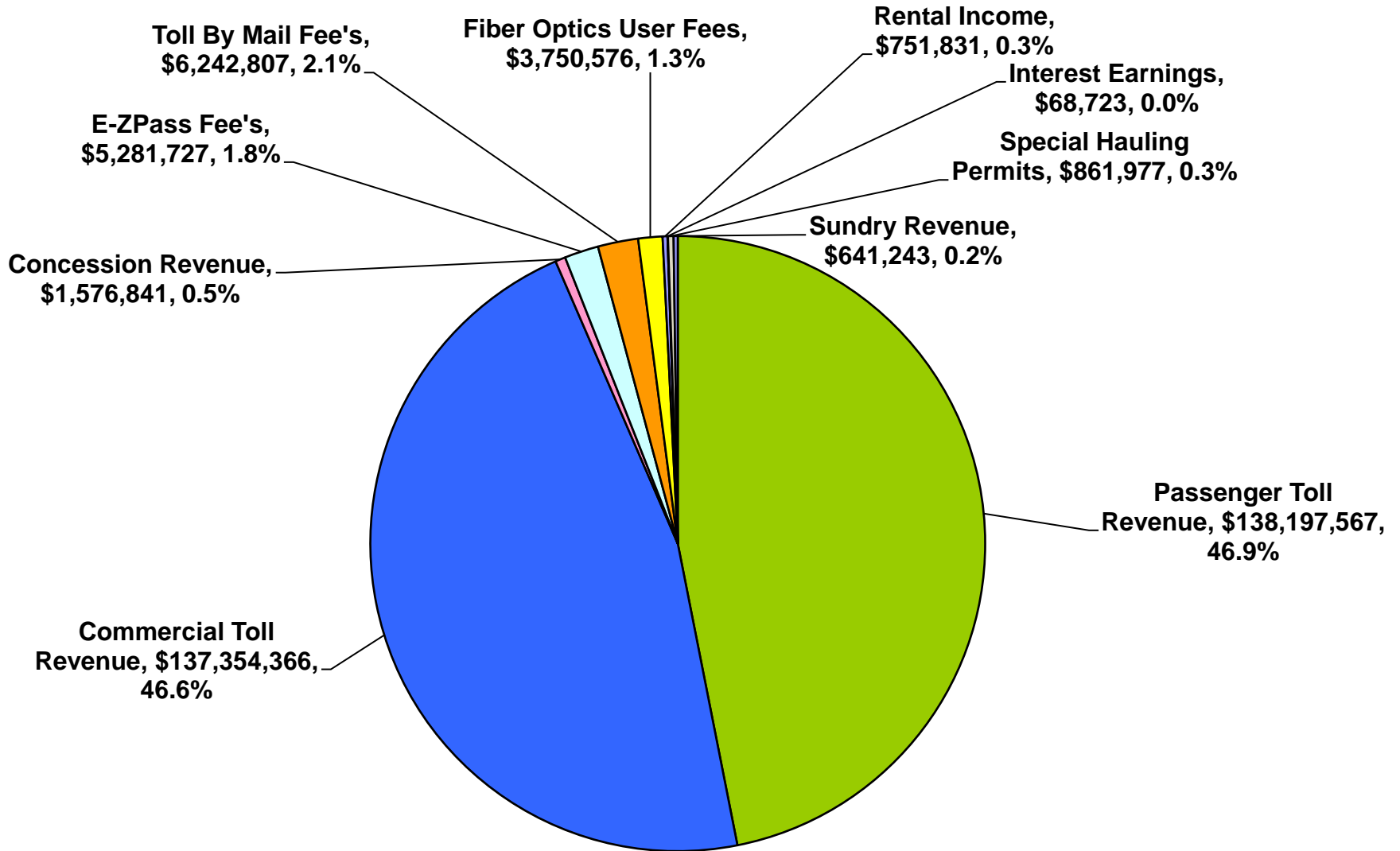


*Note: General Charges include net Pension liability and unfunded OPEB (See Notes C and D of Monthly Statement)*

# 2021 YTD Operating Revenues

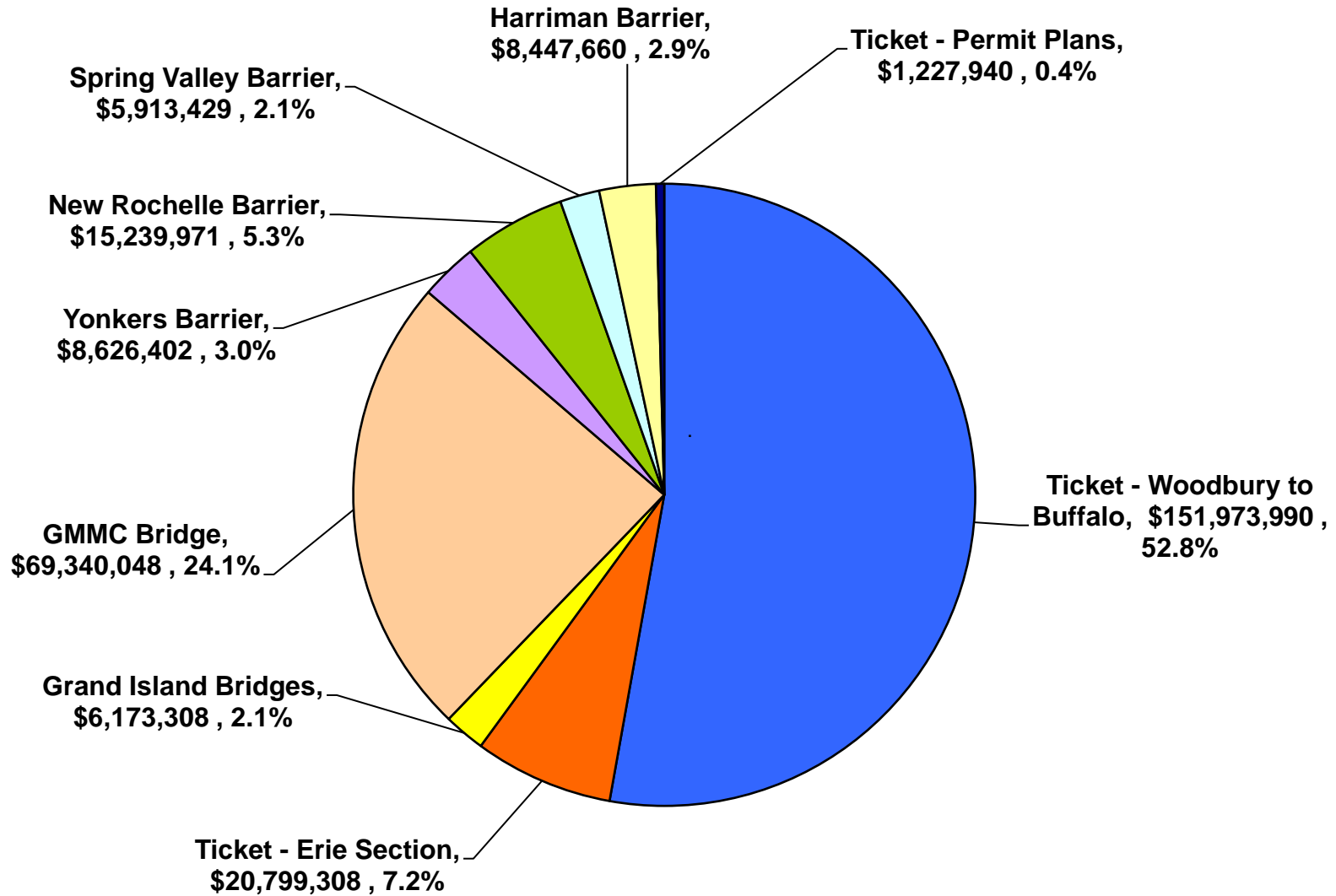


# 2021 YTD Operating Revenue



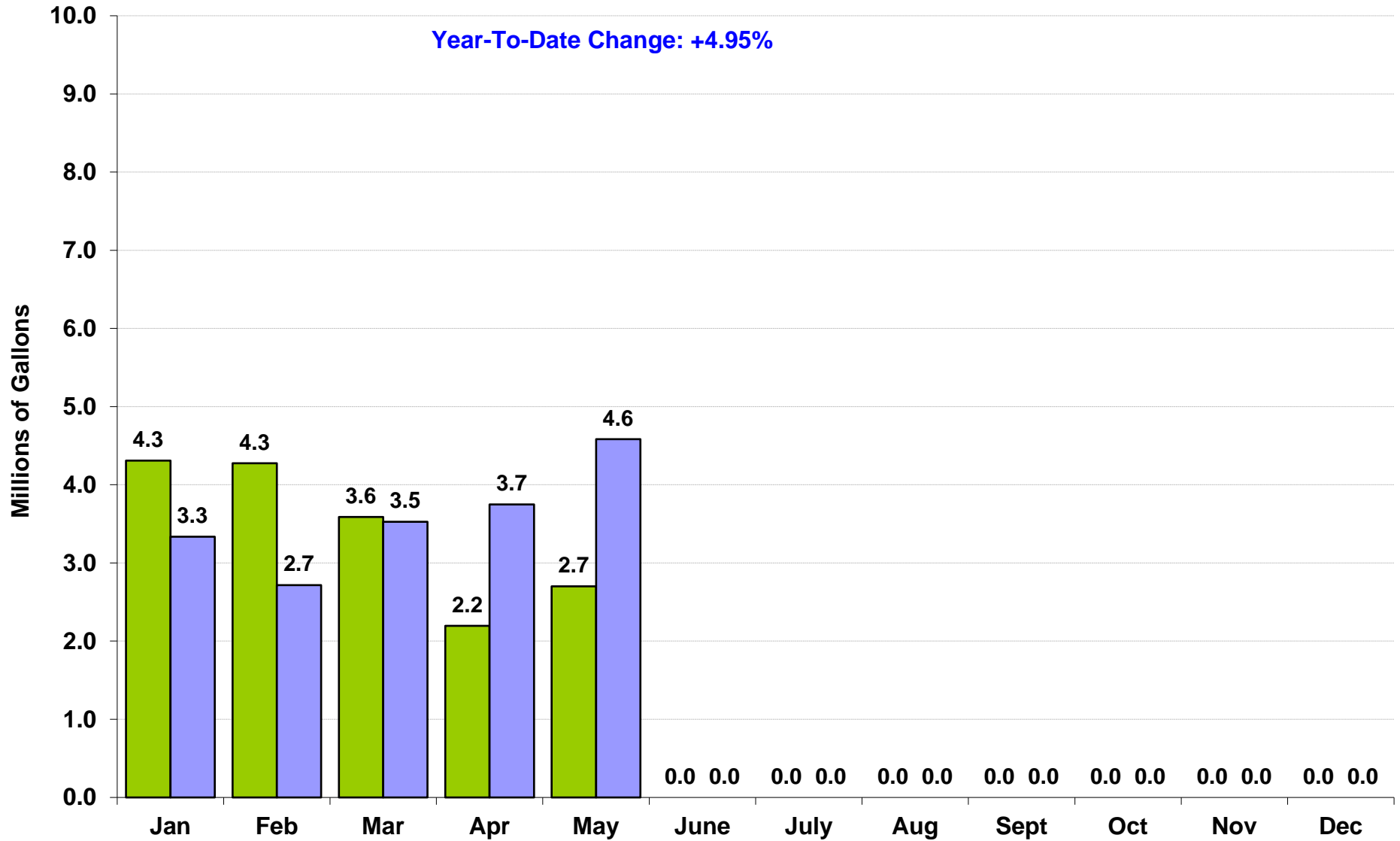


# 2021 YTD Toll Collections, By Location

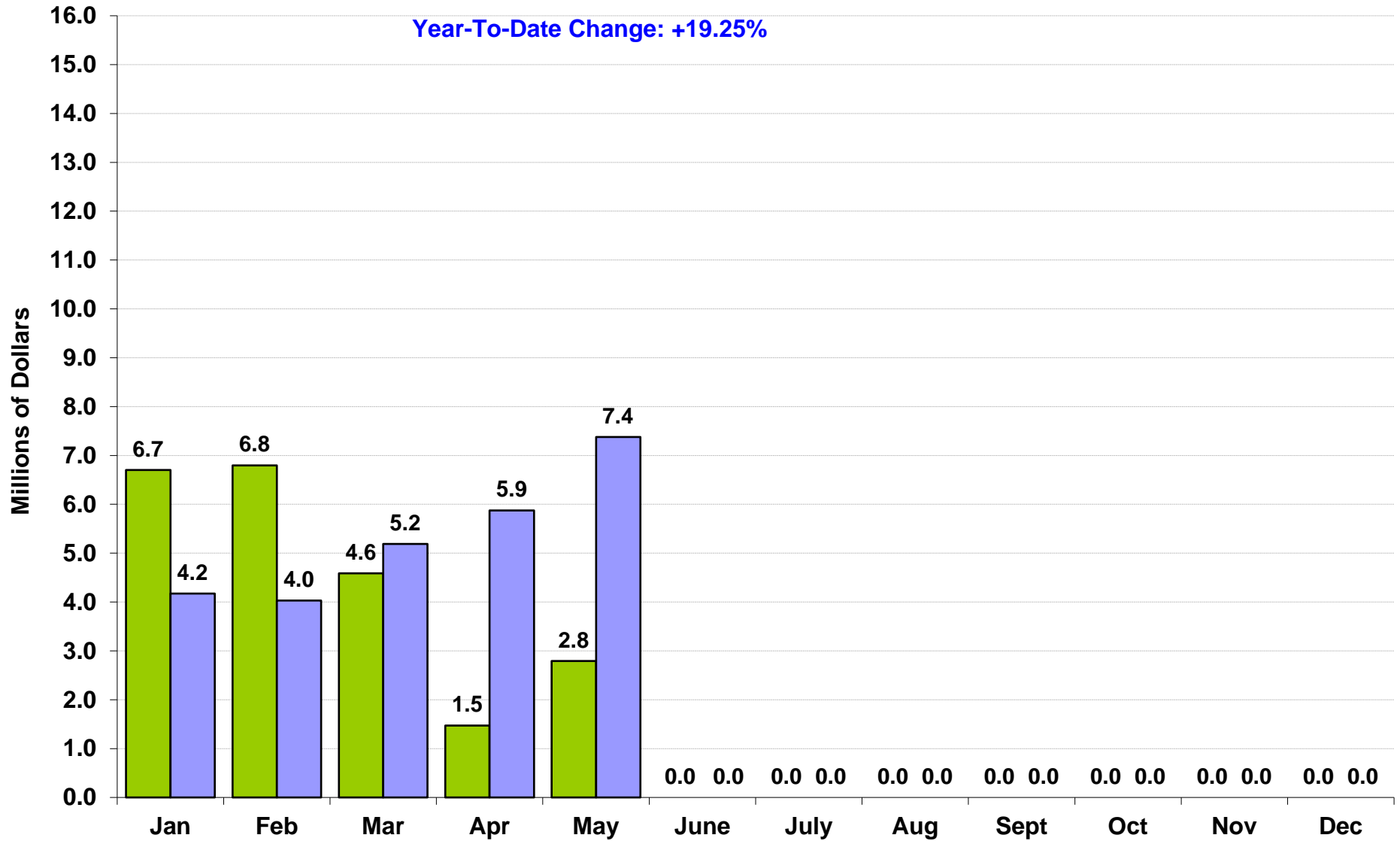


*Note: Excludes Impact of Commercial Volume Discount Program.*

# Fuel Deliveries to Service Areas



# Restaurant Sales at Service Plazas



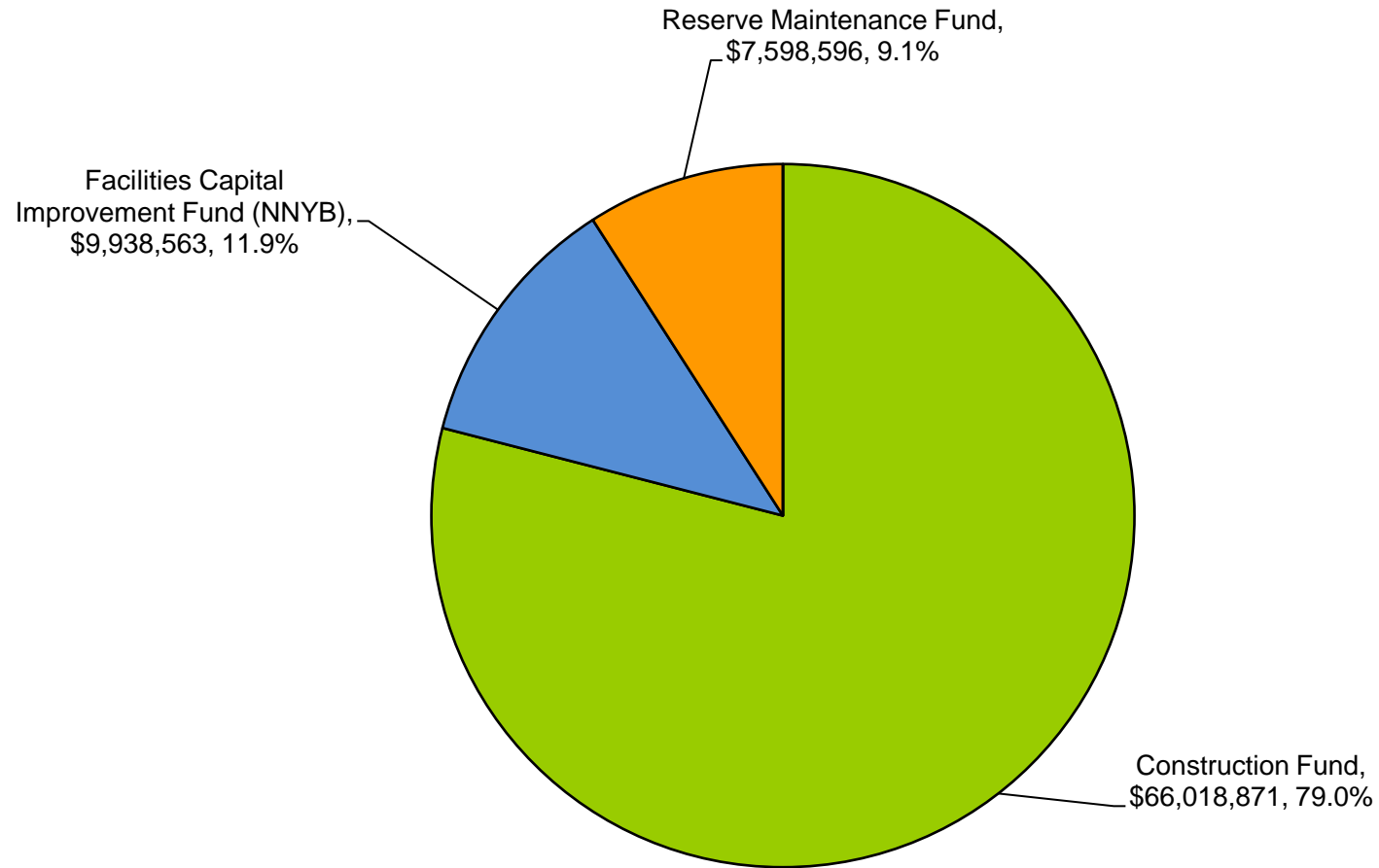
# **Thruway Capital Program**

---

**(Includes New NY Bridge Project)**

# 2021 YTD Capital Program Expenses, by Fund

YTD Total Expenses = \$83.6 million



**Note:**

General Reserve Fund (Cash): State Police Equipment & Facilities

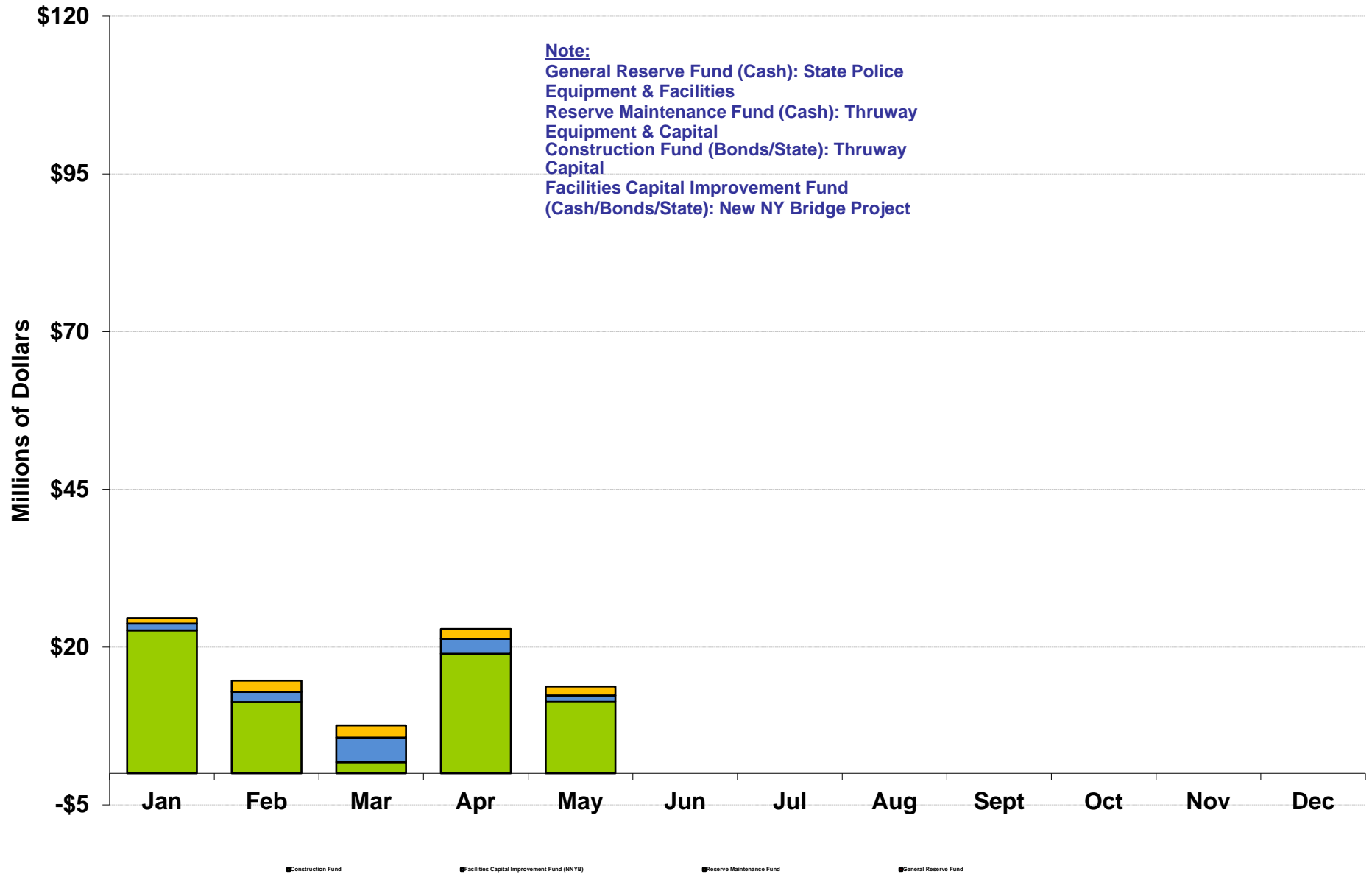
Reserve Maintenance Fund (Cash): Thruway Equipment & Capital

Construction Fund (Bonds): Thruway Capital

Facilities Capital Improvement Fund (Cash/Bonds): New NY Bridge Project

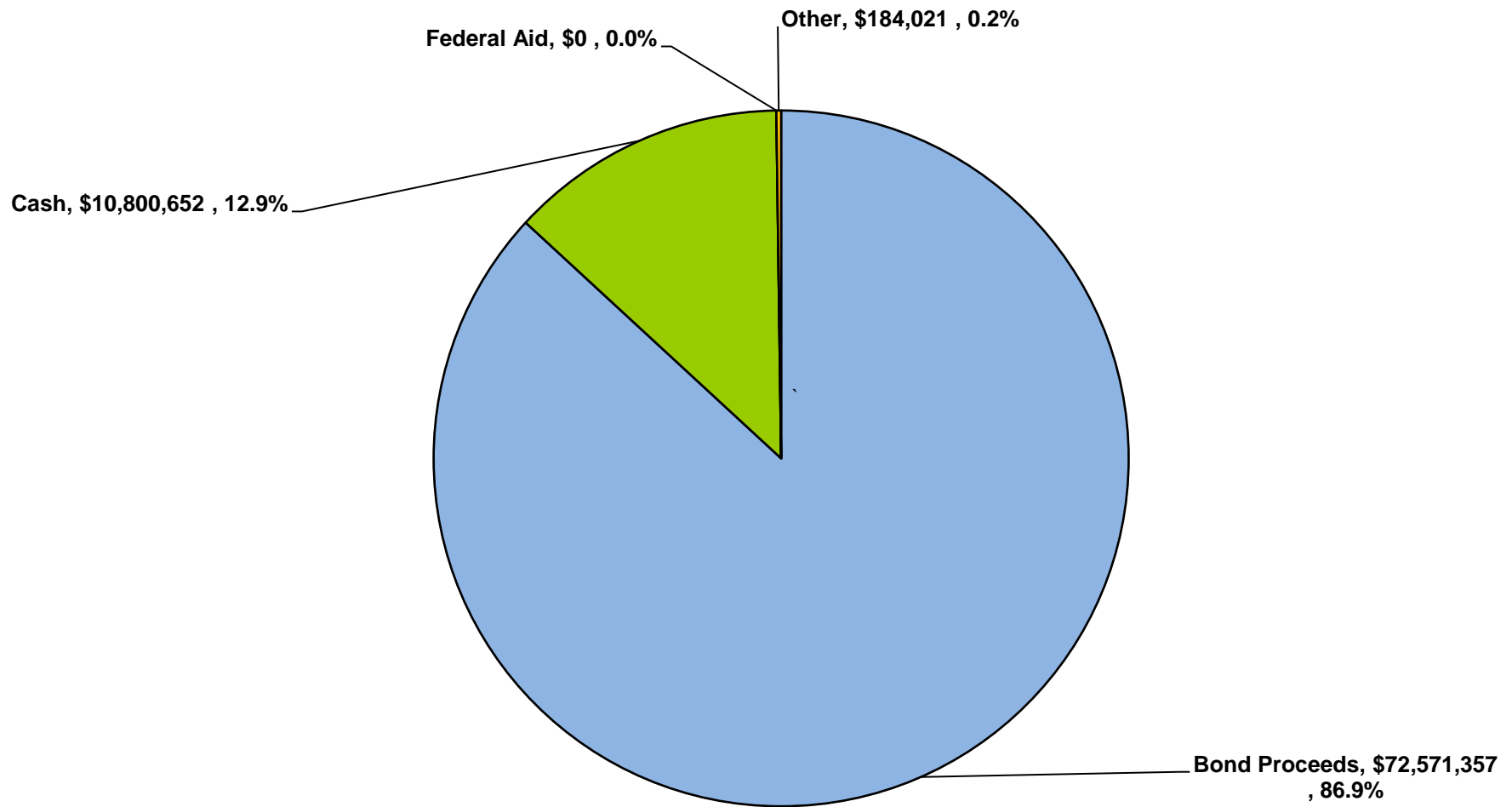
# 2021 YTD Capital Program Expenses, By Fund

YTD Total Expenses = \$83.6 million



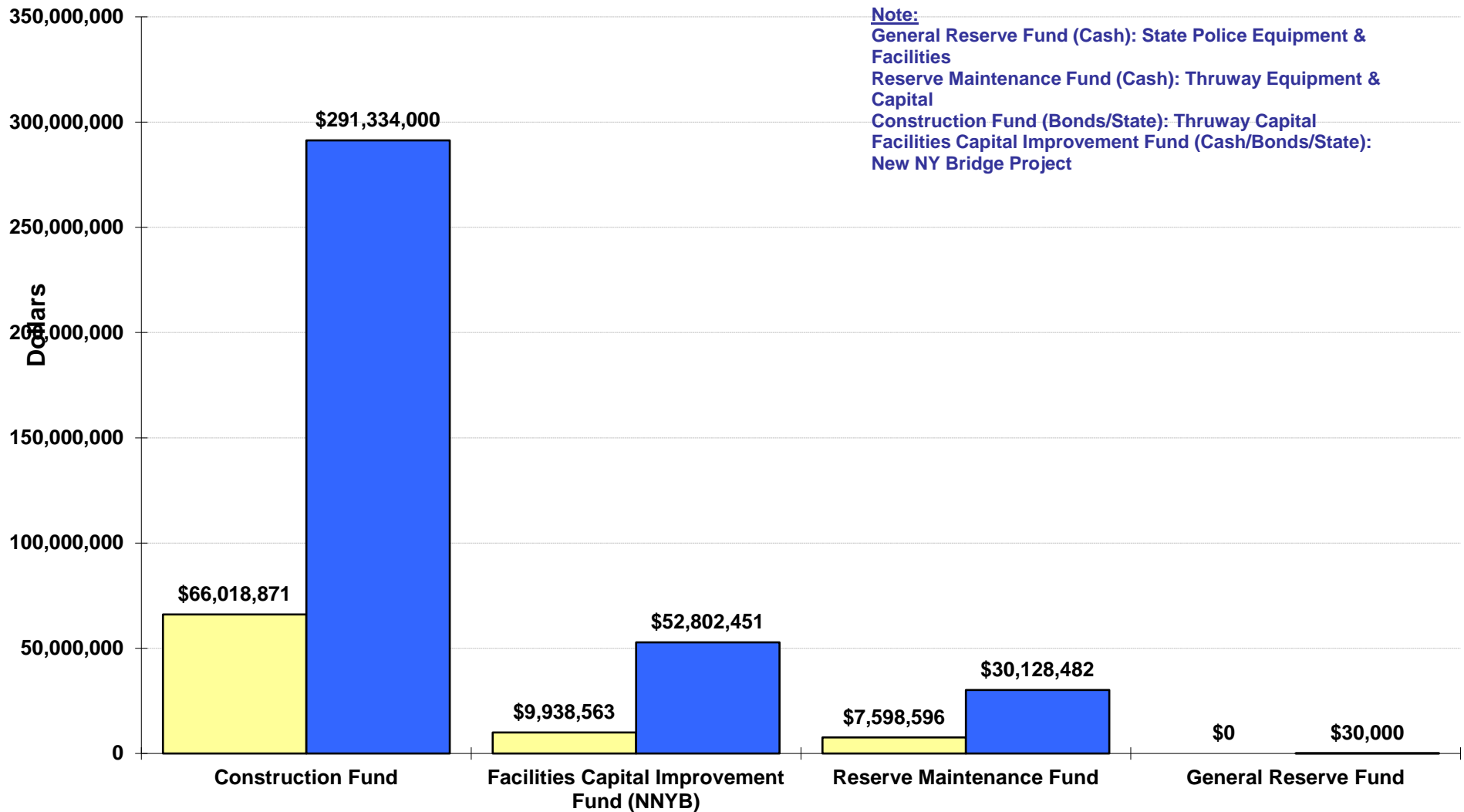
# 2021 YTD Capital Funding Sources

YTD Total Expenses = \$83.6 million



# 2021 YTD Capital Expenses, By Fund

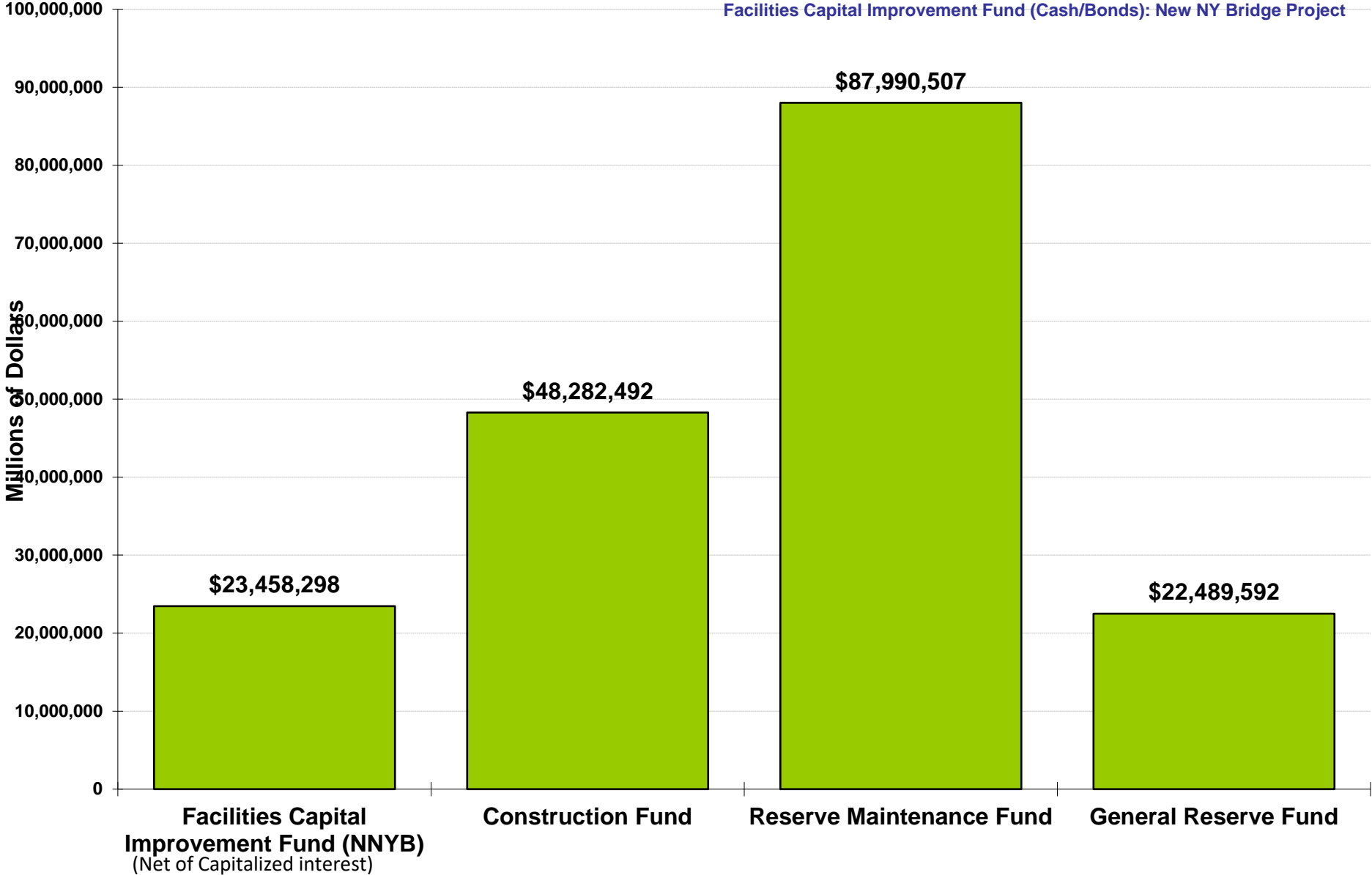
YTD Total Expenses = \$83.6 million



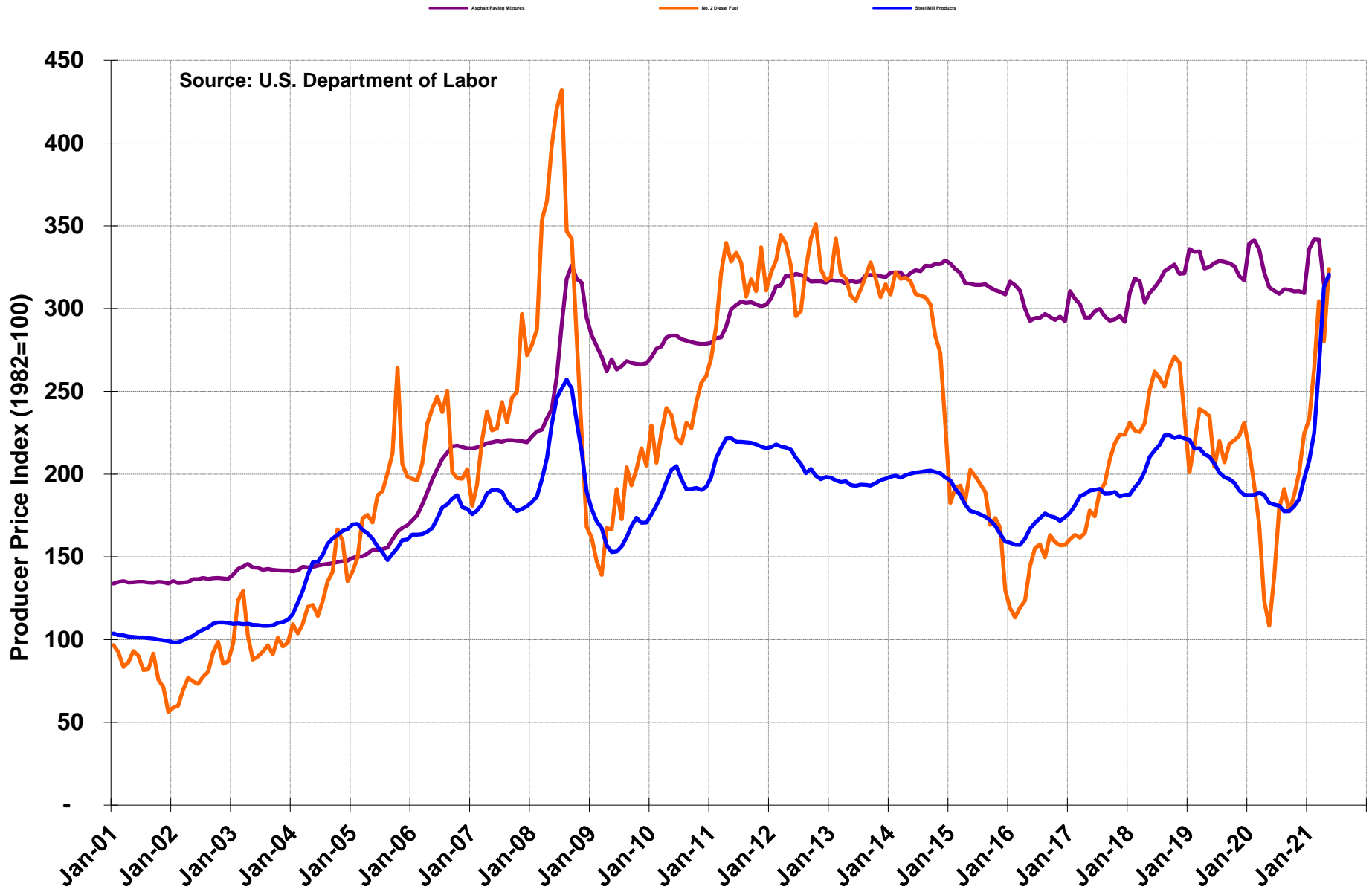


# 2021 Capital Fund Balances at End of Month

Note:  
 General Reserve Fund (Cash): State Police Equipment & Facilities  
 Reserve Maintenance Fund (Cash): Thruway Equipment & Capital  
 Construction Fund (Bonds): Thruway Capital  
 Facilities Capital Improvement Fund (Cash/Bonds): New NY Bridge Project

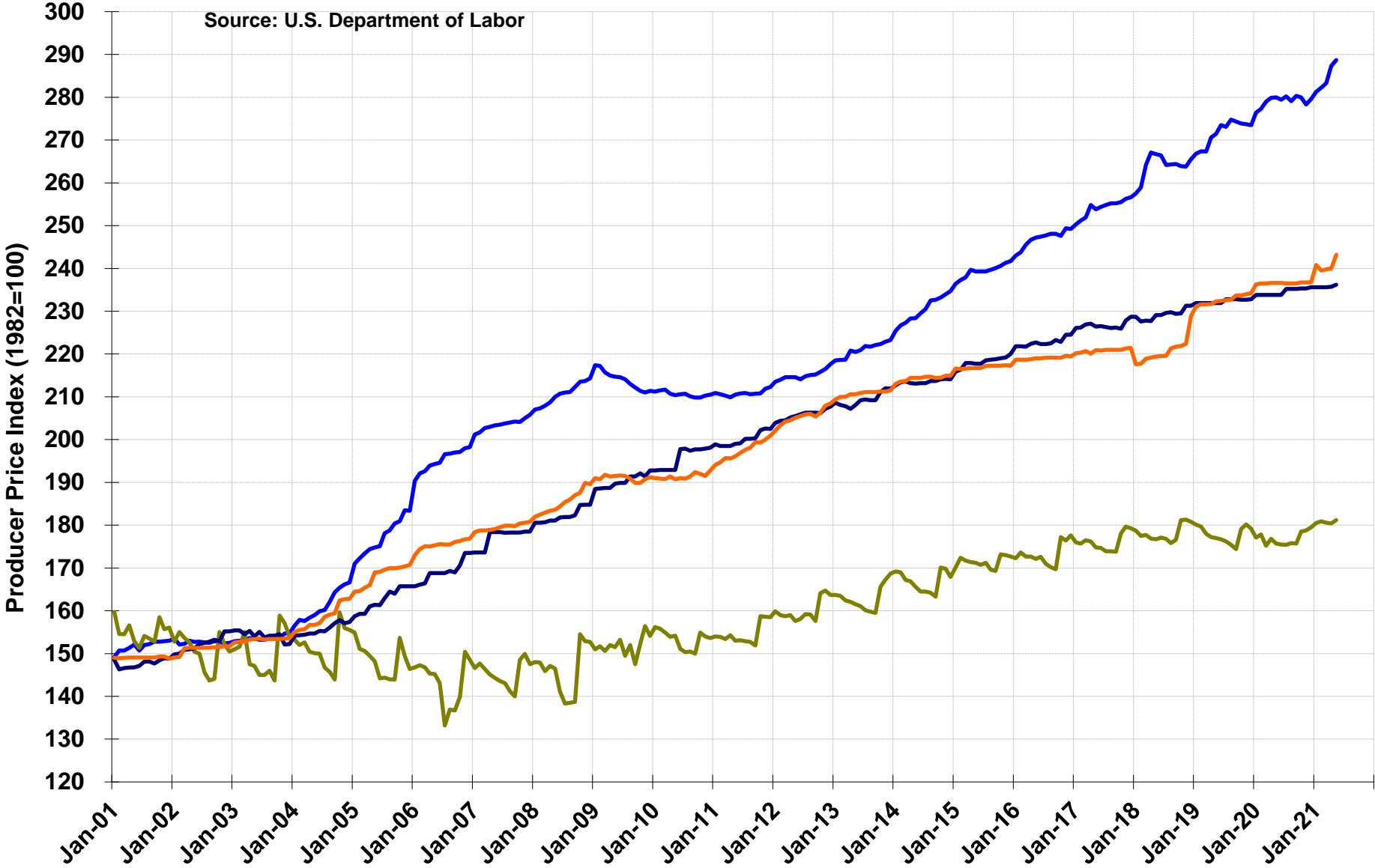


# Producer Prices: Construction Inputs

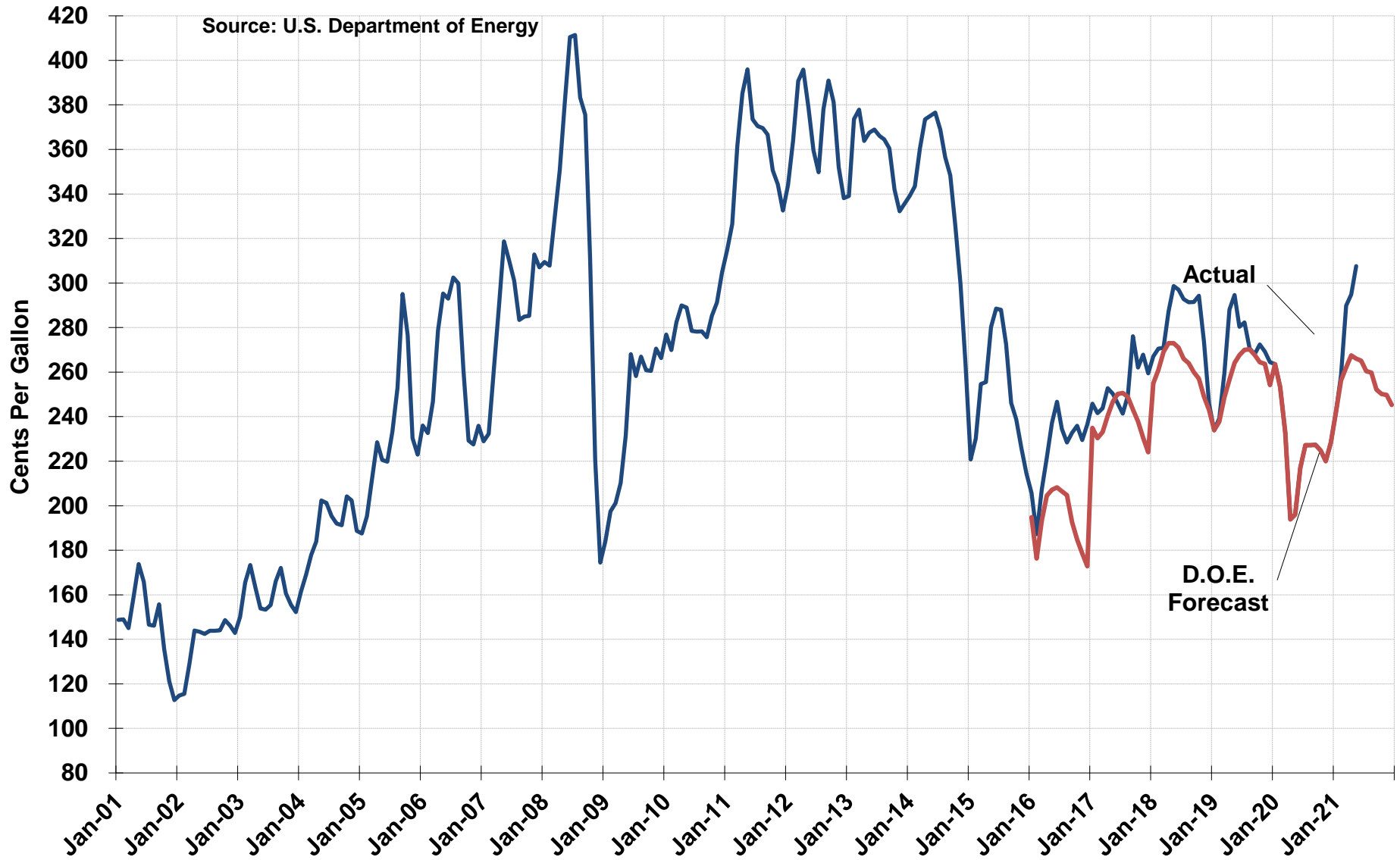


# Producer Prices: Construction Inputs

Concrete Products      Light Motor Trucks      Heavy Trucks      Const. Machinery & Equipment



# Average Retail Price of Gasoline in U.S. All Grades



# Thruway Traffic Information

---

# Thruway Traffic Information

	Year-To-Date			Percent Change
	2020	2021	Change	
<b>Revenue Trips - Location</b>				
Toll Ticket System				
Woodbury to Williamsville	70,896,705	85,007,515	14,110,810	19.9%
Erie Section	6,305,927	7,601,422	1,295,495	20.5%
Total Ticket System	77,202,632	92,608,937	15,406,305	20.0%
Bridges and Barriers				
Grand Island South	3,705,909	4,271,370	565,461	15.3%
Grand Island North	2,951,098	3,442,605	491,507	16.7%
GMMC Bridge	7,972,708	9,708,563	1,735,855	21.8%
Yonkers	5,293,581	6,294,871	1,001,290	18.9%
New Rochelle (I-95)	5,890,511	7,137,187	1,246,676	21.2%
Spring Valley (Commercial Only)	651,598	778,164	126,566	19.4%
Harriman	5,077,247	6,382,194	1,304,947	25.7%
Total Bridges and Barriers	31,542,652	38,014,954	6,472,302	20.5%
Total Trips	108,745,284	130,623,891	21,878,607	20.1%
Non-Revenue Trips	604,810	748,380	143,570	23.7%
Total Revenue Trips	108,140,474	129,875,511	21,735,037	20.1%

Revenue Trips - Type	2020	2021	Change	
Passenger	88,322,371	106,828,217	18,505,846	21.0%
Commercial	19,818,103	23,047,294	3,229,191	16.3%
Total Revenue Trips	108,140,474	129,875,511	21,735,037	20.1%

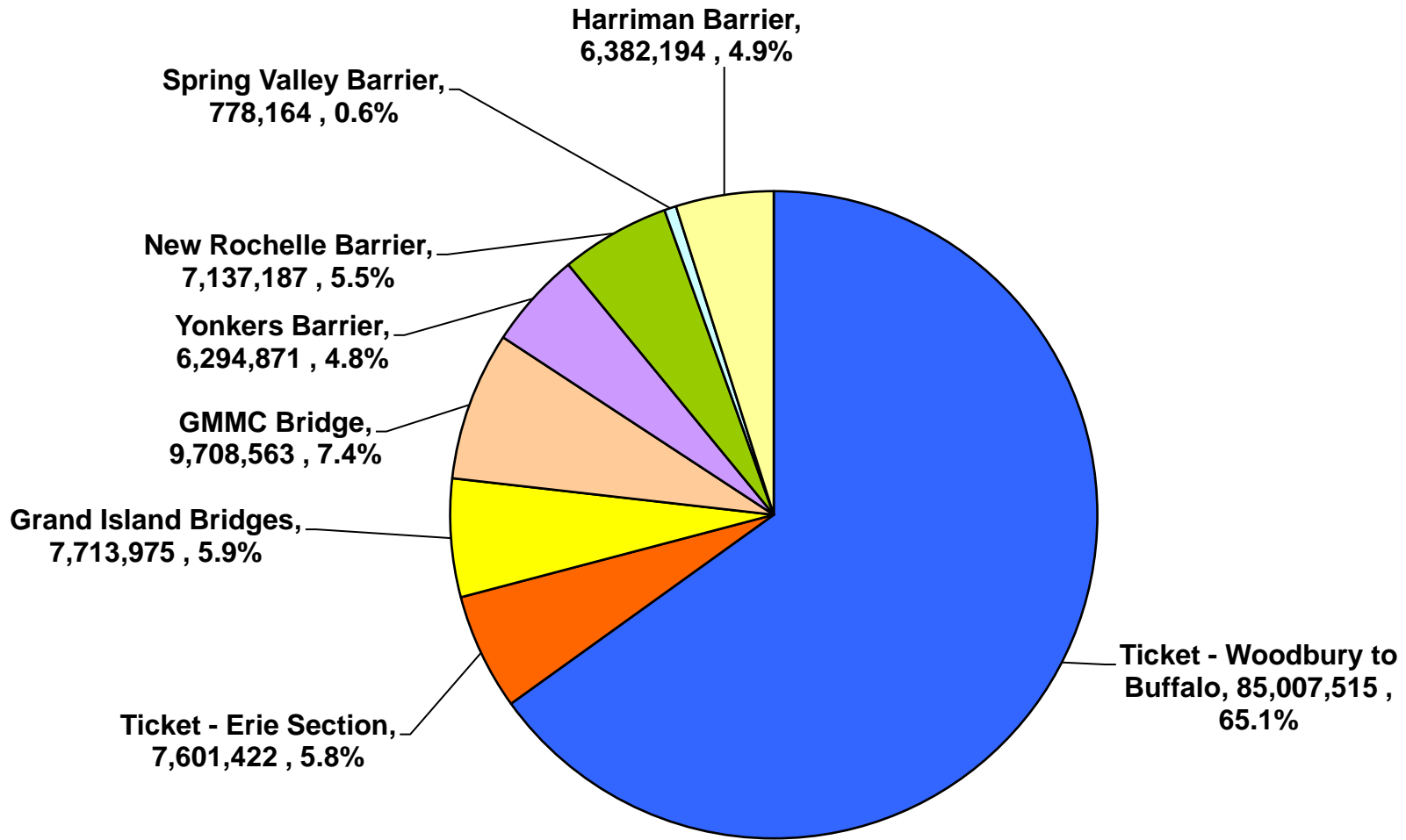
## **Miles Traveled - Revenue Trips**

Toll Ticket System	1,668,841,999	1,968,490,373	299,648,374	17.96%
NY Division Bridge/Barriers	446,094,067	543,096,178	97,002,111	21.74%
Williamsville-Lackawanna	104,726,845	126,321,372	21,594,527	20.62%
Grand Island Bridges	66,343,130	76,883,480	10,540,350	15.89%
Total Revenue Trip Miles	2,286,006,041	2,714,791,403	428,785,362	18.76%

## **Average Trip Length (Miles) - All Trips - Ticketed System**

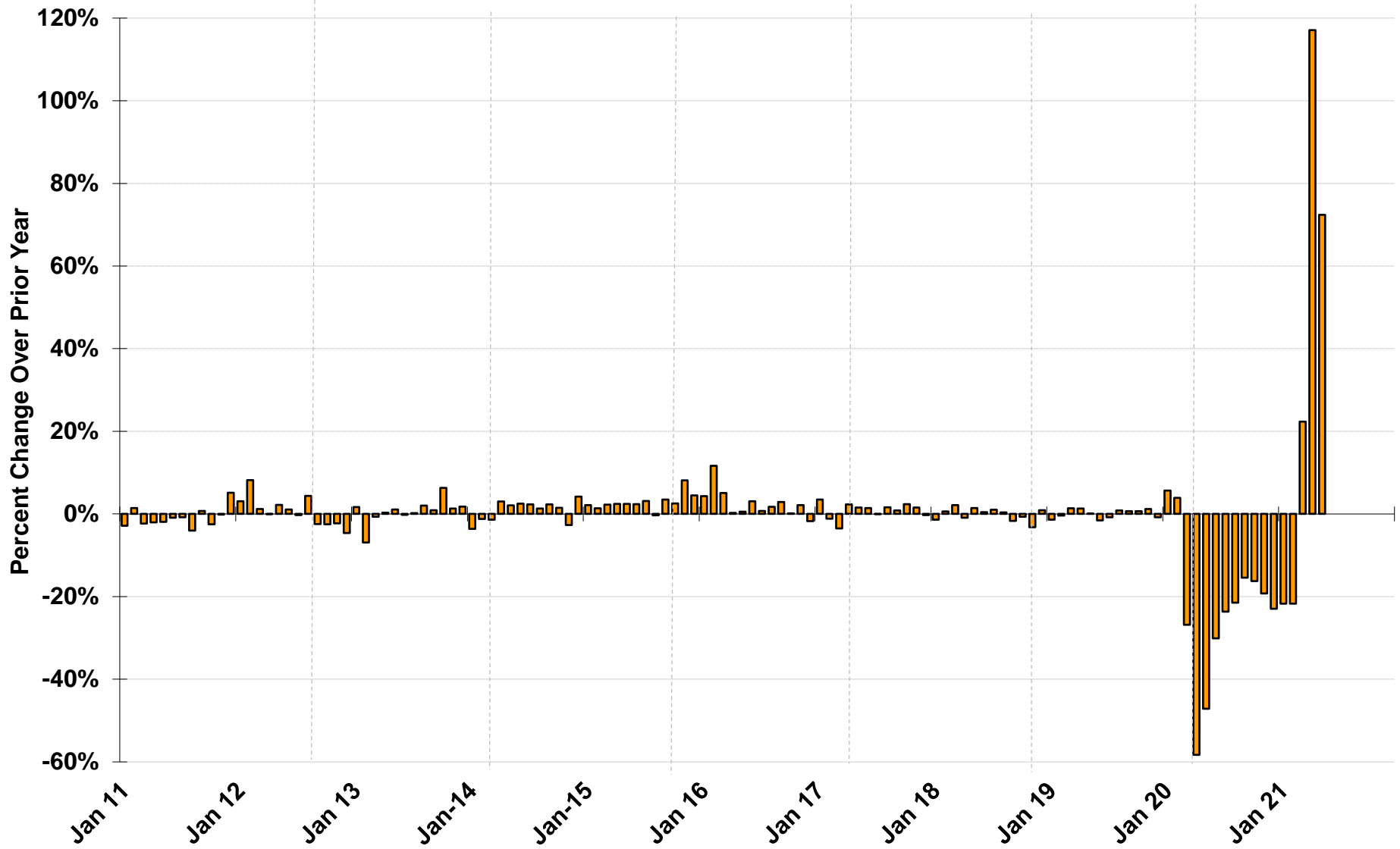
Passenger	33.27	16.80	(16.47)	-49.50%
Commercial	62.02	22.76	(39.26)	-63.30%
Overall	37.63	17.99	(19.64)	-52.19%

# 2021 YTD Total Thruway Trips, By Location



# Percent Change in Monthly Thruway Traffic

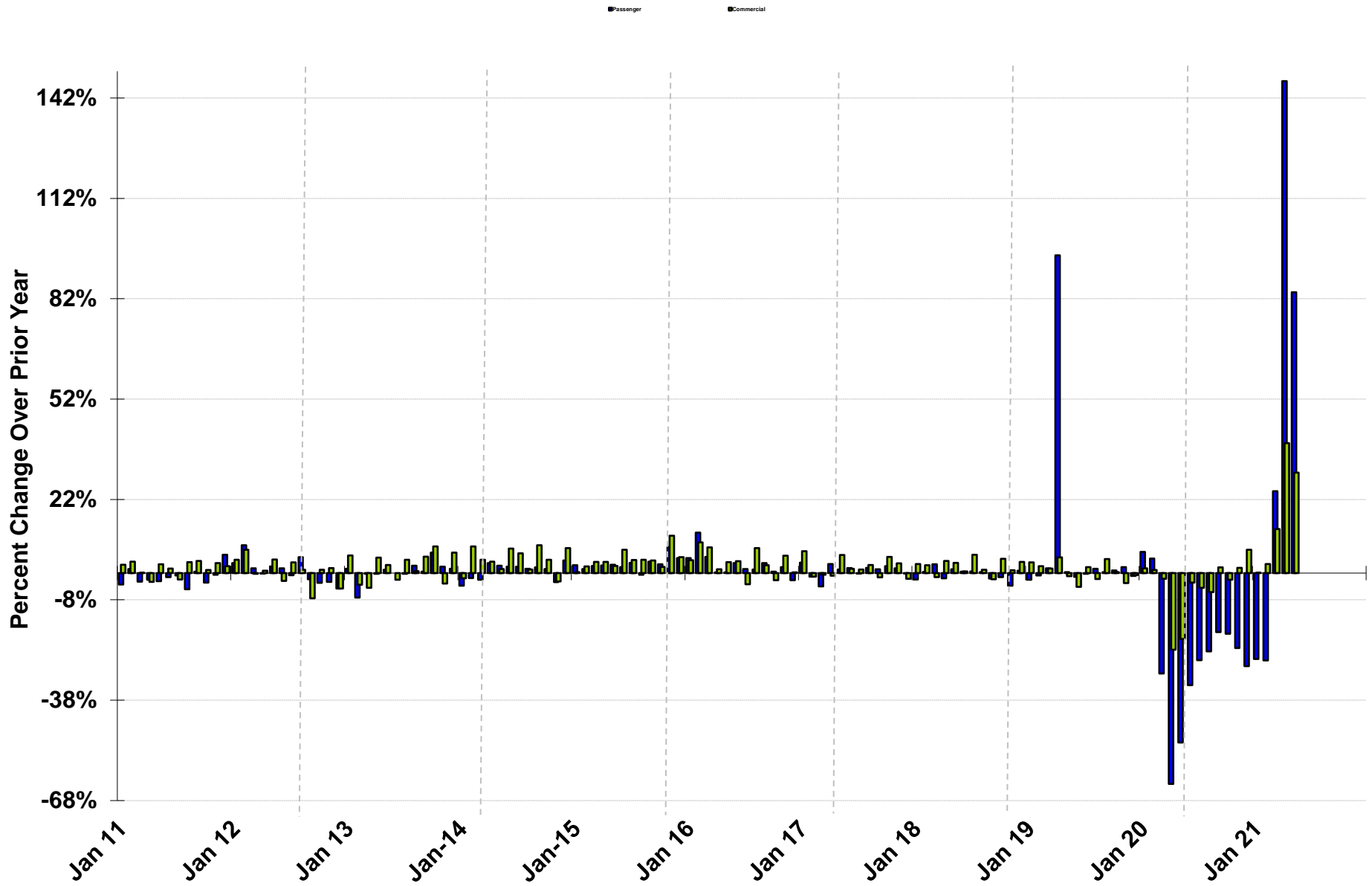
Total Passenger and Commercial Revenue Trips





# Percent Change in Monthly Thruway Traffic

By Passenger and Commercial Revenue Trips



# Operating Expenses and Revenues

(Variance from 2021 Budget)

