



## Monthly Financial Report

March 2021  
Supplement



# Operating Results

---

## Operating Expenses

Category	Year-To-Date			Percent Change
	2020	2021	Change	
<b>Thruway Operating Expenses</b>				
Admin and General	\$6,199,902	\$5,914,541	(\$285,361)	-4.6%
Engineering Services	1,393,803	1,380,860	(12,943)	-0.9%
Maintenance Engineering				
Thruway Maintenance	23,248,132	26,411,195	3,163,063	13.6%
Equipment Maintenance	7,091,458	6,946,090	(145,368)	-2.0%
Finance and Accounts	1,792,079	1,466,201	(325,878)	-18.2%
Operations				
Traffic and Services	2,213,927	2,201,784	(12,143)	-0.5%
Toll Collection	23,620,320	20,637,574	(2,982,746)	-12.6%
General Charges *	26,864,150	24,822,682	(2,041,468)	-7.6%
<b>Total Thruway Operating</b>	<b>\$92,423,771</b>	<b>\$89,780,927</b>	<b>(\$2,642,844)</b>	<b>-2.9%</b>
<b>Other Operating Expenses</b>				
<b>State Police**</b>	<b>\$14,406,493</b>	<b>\$15,521,721</b>	<b>\$1,115,228</b>	<b>7.7%</b>
<b>Total Other Operating Expenses</b>	<b>\$14,406,493</b>	<b>\$15,521,721</b>	<b>1,115,228</b>	<b>7.7%</b>
<b>Total Operating Expenses</b>	<b>\$106,830,264</b>	<b>\$105,302,648</b>	<b>(\$1,527,616)</b>	<b>-1.4%</b>

\* Includes changes relative to unfunded OPEB and Pension Adjustment (See Notes C and D of Monthly Statement) and are as follows:

Pension Contributions	\$5,945,250	\$5,336,001	(\$609,249)	-10.2%
Pension Adjustment LT liability and deferred Pension resources	0	\$0	\$0	-
Unfunded Retiree Health Insur. & Other Benefits	0	0	0	-
Funded Health Insurance & Other Benefits	16,241,549	15,877,919	(363,630)	-2.2%
Social Security	3,038,479	2,408,848	(629,631)	-20.7%
Workers' Compensation Insurance	2,240,250	1,800,000	(440,250)	-19.7%
Other General Charges	(601,378)	(600,086)	1,292	-0.2%
<b>Total General Charges</b>	<b>\$26,864,150</b>	<b>\$24,822,682</b>	<b>(\$2,041,468)</b>	<b>-7.6%</b>

\*\* Reflects the State Police expenses that the Authority reimburses the State as part of the 2016/17 Approved State Budget as of 4/1/2016.  
This includes reimbursement for purchase of vehicles and equipment.

## Operating Revenues

Category	Year-To-Date			Percent Change
	2020	2021	Change	
<b>Toll Revenue</b>	<b>\$153,773,902</b>	<b>\$149,709,077</b>	<b>(\$4,064,825)</b>	<b>-2.6%</b>
Passenger Revenue	83,913,566	71,194,101	(12,719,465)	-15.2%
Commercial Revenue	69,860,336	78,514,976	8,654,640	12.4%
<b>Concession Revenue</b>	<b>1,830,516</b>	<b>812,055</b>	<b>(1,018,461)</b>	<b>-55.6%</b>
Gasoline Revenue	453,811	356,023	(97,788)	-21.5%
Restaurant Revenue	1,376,705	456,032	(920,673)	-66.9%
<b>E-ZPass Revenue</b>	<b>5,057,922</b>	<b>3,256,037</b>	<b>(1,801,885)</b>	<b>-35.6%</b>
<b>Toll By Mail Fee's ***</b>	<b>4,563,803</b>	<b>3,445,929</b>	<b>(1,117,874)</b>	<b>-24.5%</b>
<b>Fiber Optics User Fees</b>	<b>18,765</b>	<b>2,228,731</b>	<b>2,209,966</b>	<b>11777.1%</b>
<b>Rental Income</b>	<b>1,941,207</b>	<b>604,058</b>	<b>(1,337,149)</b>	<b>-68.9%</b>
<b>Interest Earnings</b>	<b>2,336,684</b>	<b>52,853</b>	<b>(2,283,831)</b>	<b>-97.7%</b>
<b>Special Hauling Permits</b>	<b>515,593</b>	<b>460,392</b>	<b>(55,201)</b>	<b>-10.7%</b>
<b>Sundry Revenue</b>	<b>402,986</b>	<b>146,888</b>	<b>(256,098)</b>	<b>-63.6%</b>
<b>Total Operating Revenue</b>	<b>\$170,441,378</b>	<b>\$160,716,020</b>	<b>(\$9,725,358)</b>	<b>-5.7%</b>

\*\*\* Toll by Mail fee's are from the All Electronic Toll Collection operation at the Gov. Mario M. Cuomo Bridge Barrier that started April 2016 and for the North & South Grand Island Bridge Barriers in March 2018, Harriman 2018, Yonkers November 2018, New Rochelle

## Operating Budget vs. Actual

	Year-To-Date			Percent Difference
	2021 Budget	Actual	Difference	
<b>Total Operating Expenses:</b>				
Thruway Operating Expenses *	\$88,834,985	\$89,725,344	\$890,359	1.0%
Claims, Envir. Reserves and AET trans.	250,000	0	(250,000)	-100.0%
Other Operating Expenses- State Police **	15,484,018	15,521,721	37,703	0.2%
Total Operating Expenses	\$104,569,003	\$105,247,065	\$678,062	0.6%
<b>Total Operating Revenues:</b>				
Toll Revenue ***	\$150,763,045	\$149,709,077		
Adjust to Cash basis w/ AET receivable		(6,998,776)		
Net Toll Revenue ***	\$150,763,045	\$142,710,301	(\$8,052,743)	-5.3%
Concession Revenue	856,418	\$812,055	(44,363)	-5.2%
E-ZPass and Tolls By Mail fee's	14,178,082	\$6,701,966	(7,476,116)	-52.7%
Sundry, Interest & Special Hauling Revenue	3,691,356	\$3,470,124	(221,232)	-6.0%
Total Operating Revenue	\$169,488,901	\$153,694,446	(\$15,794,455)	-9.3%

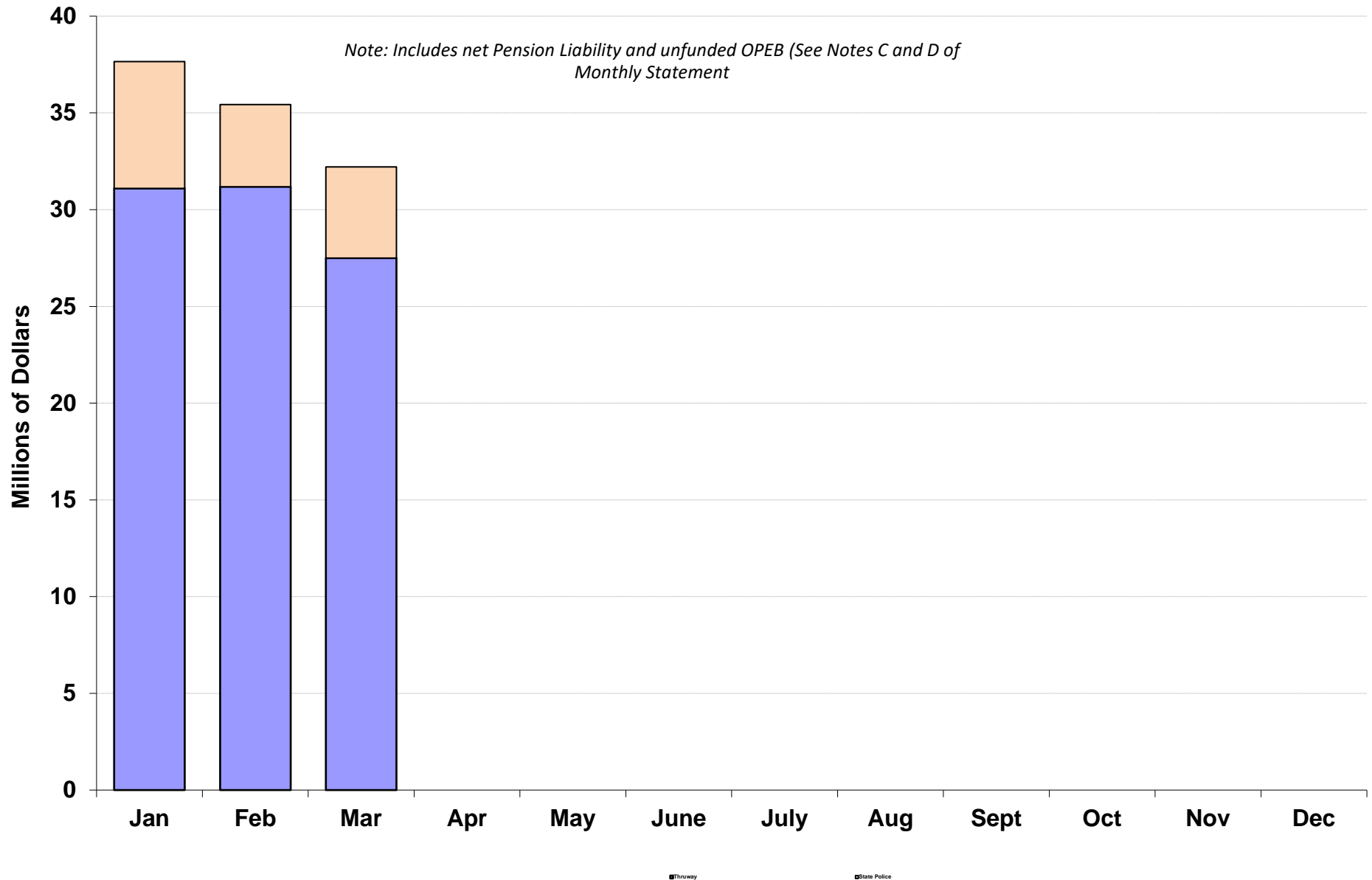
\* Excludes unfunded OPEB (See Note D of Monthly Statement) and adjustment of net Pension liability and changes in Inflows/outflows adopted in 2015 in accordance with GASB 68 (see Note C).

\*\* The State's 2016/17 Budget provides the Authority reimburse for State Police - Troop T costs as of 4/1/2016. This includes reimbursement for equipment and vehicles that are typically billed later in year.

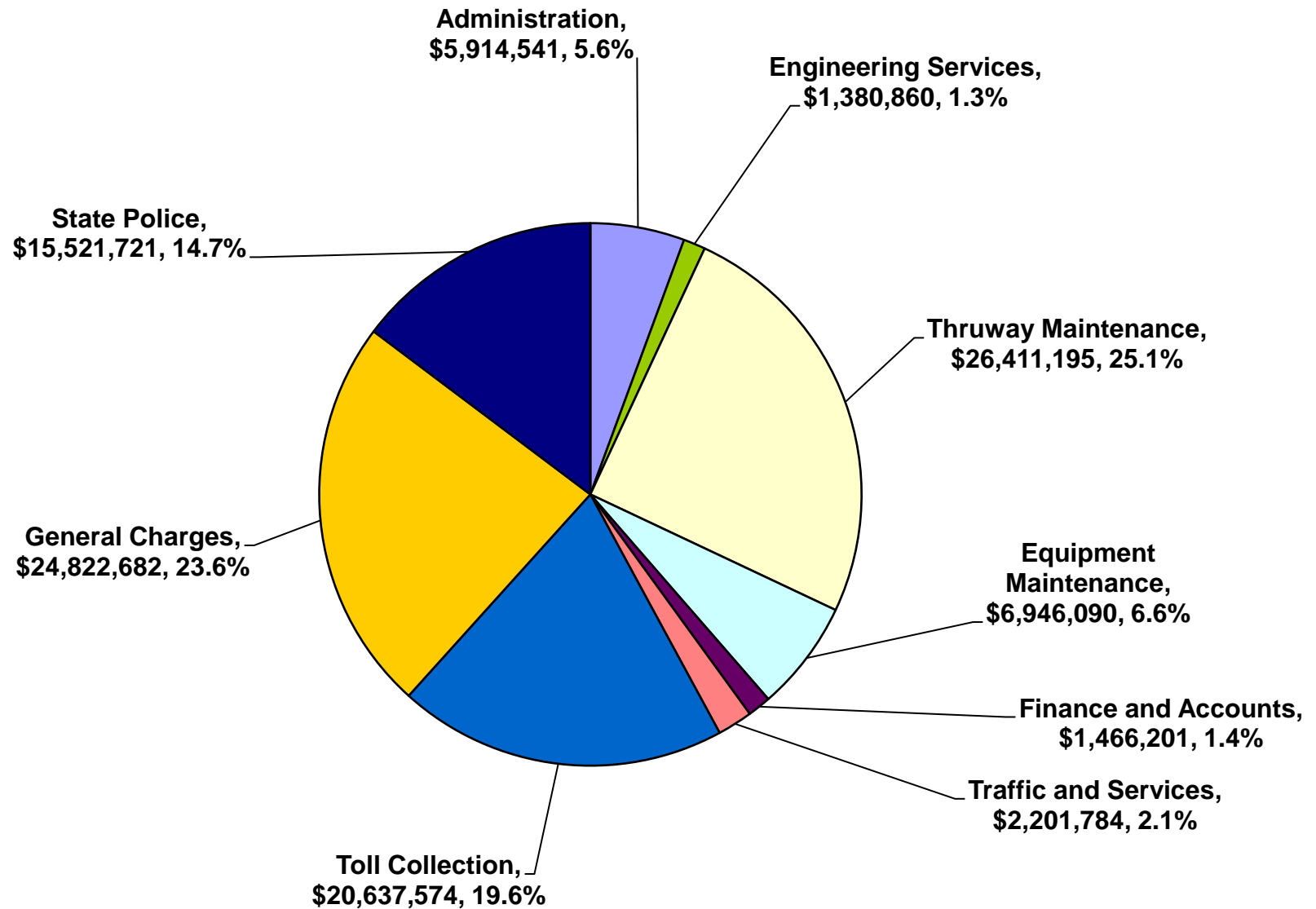
\*\*\* Includes the adjustment of accounts receivable for Tolls by Mail which is outstanding and thus not available until paid. In addition, Stantec's projections factors in the delay of receipt of Toll's by Mail revenues at All Electronic Toll locations.



# 2021 YTD Operating Expenses

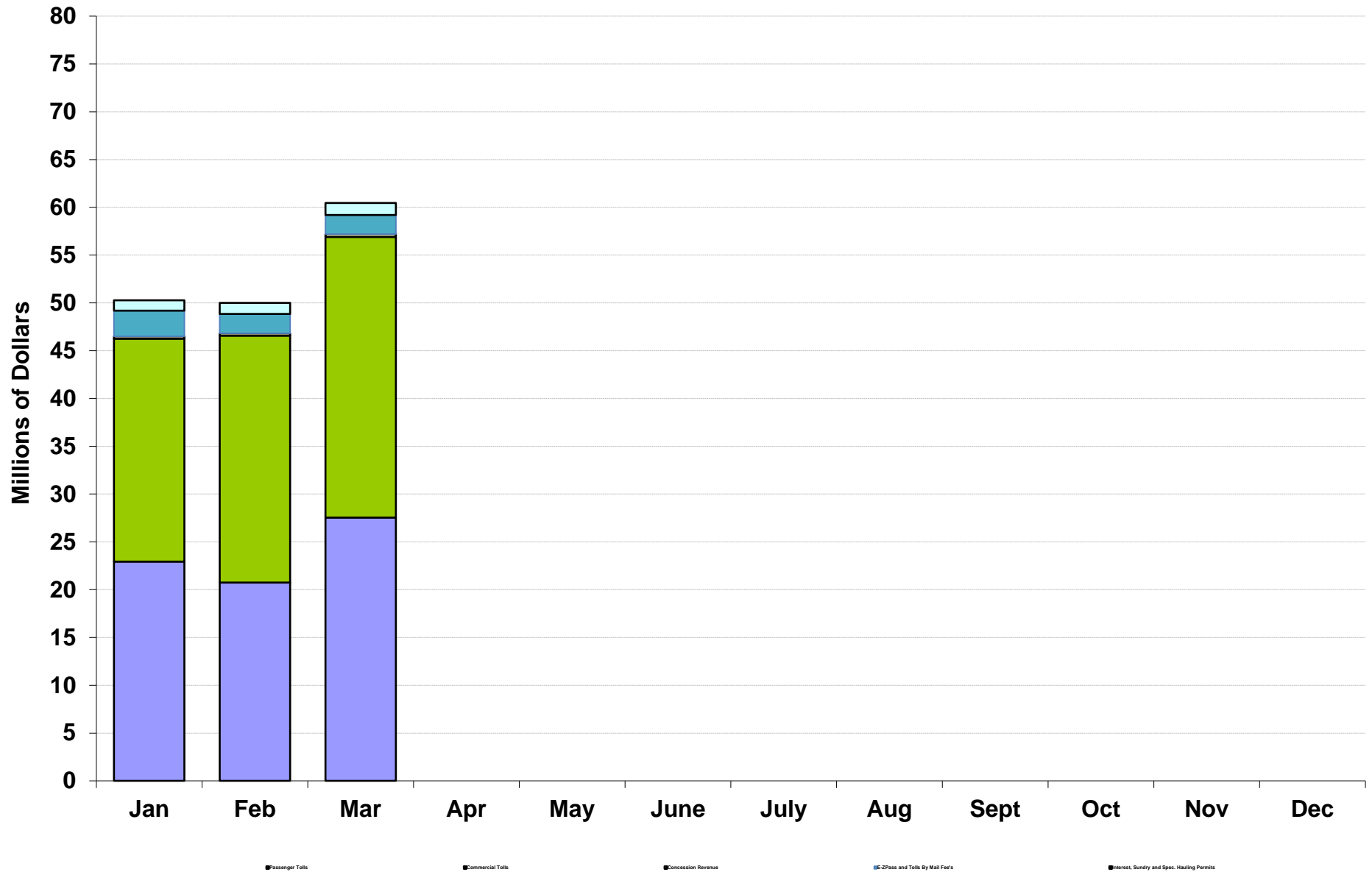


# 2021 YTD Operating Expenses

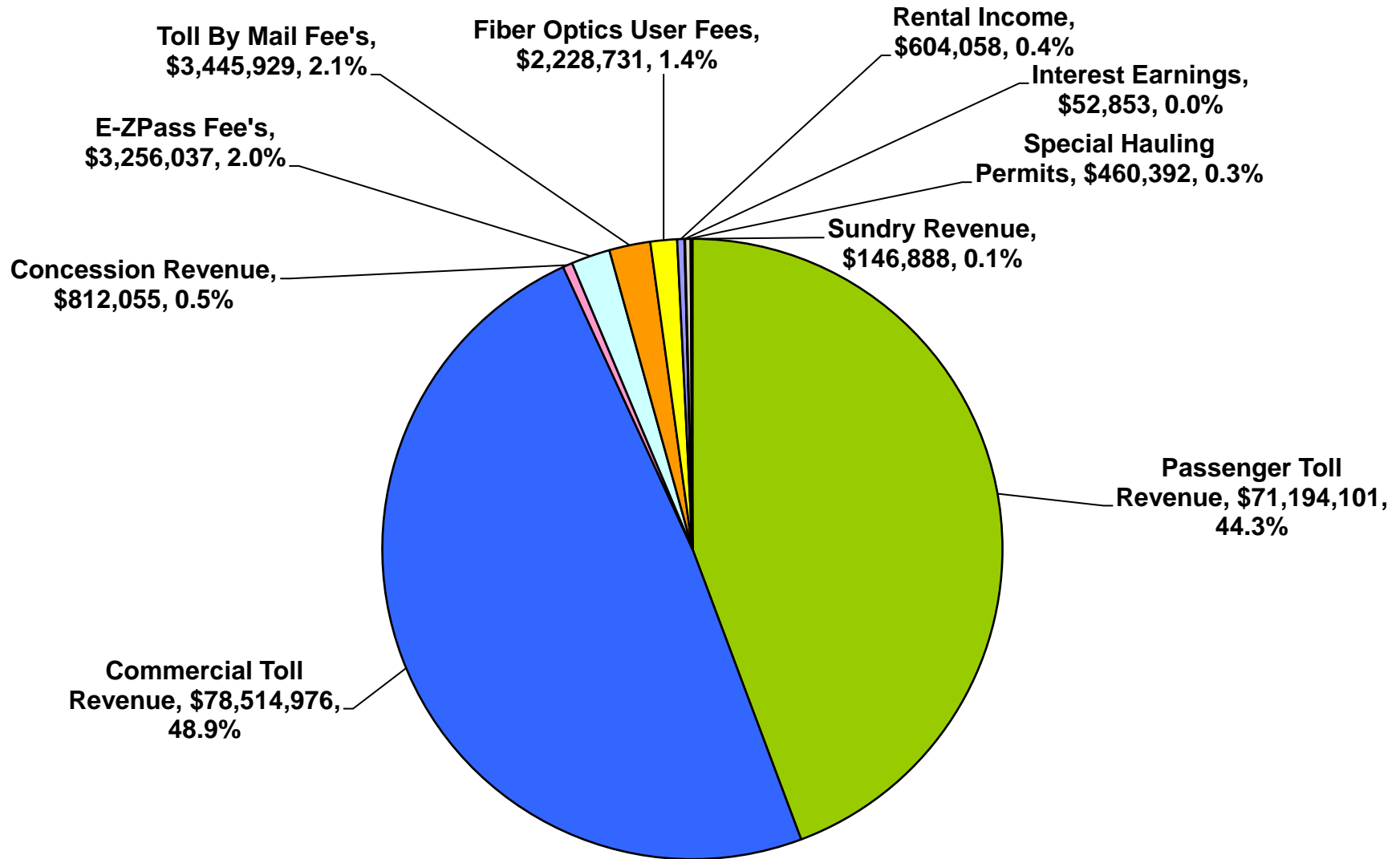


*Note: General Charges include net Pension liability and unfunded OPEB (See Notes C and D of Monthly Statement)*

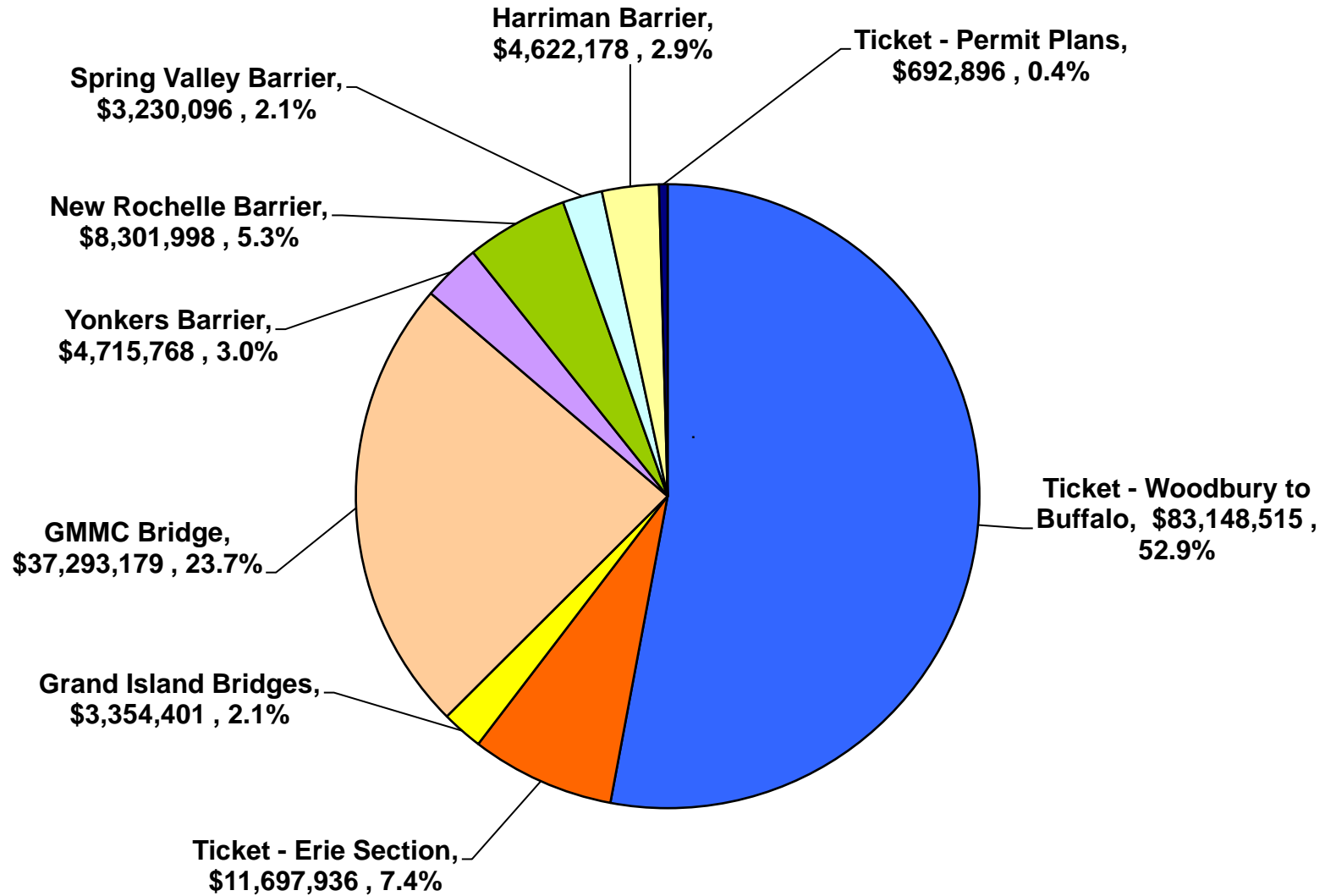
# 2021 YTD Operating Revenues



# 2021 YTD Operating Revenue



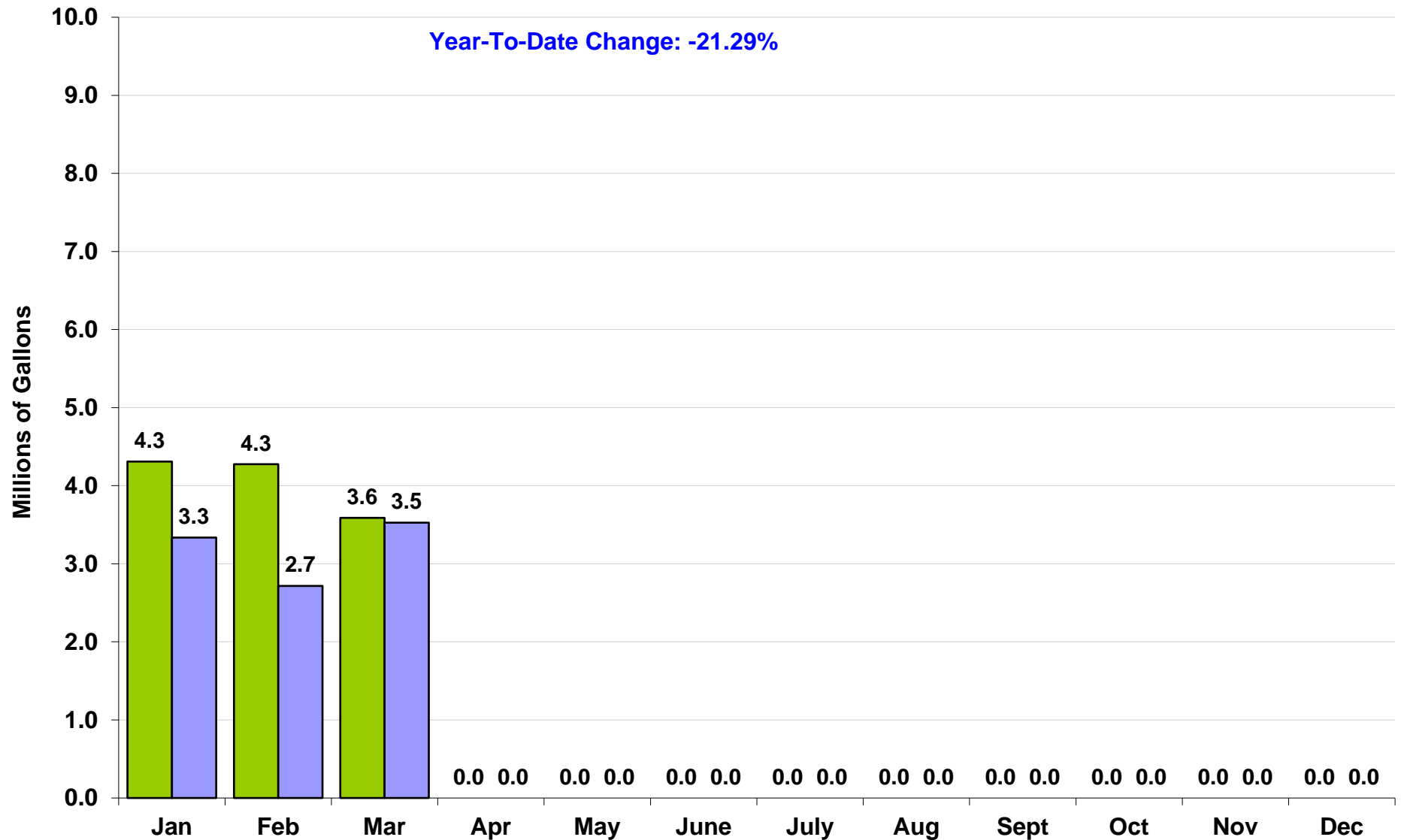
# 2021 YTD Toll Collections, By Location



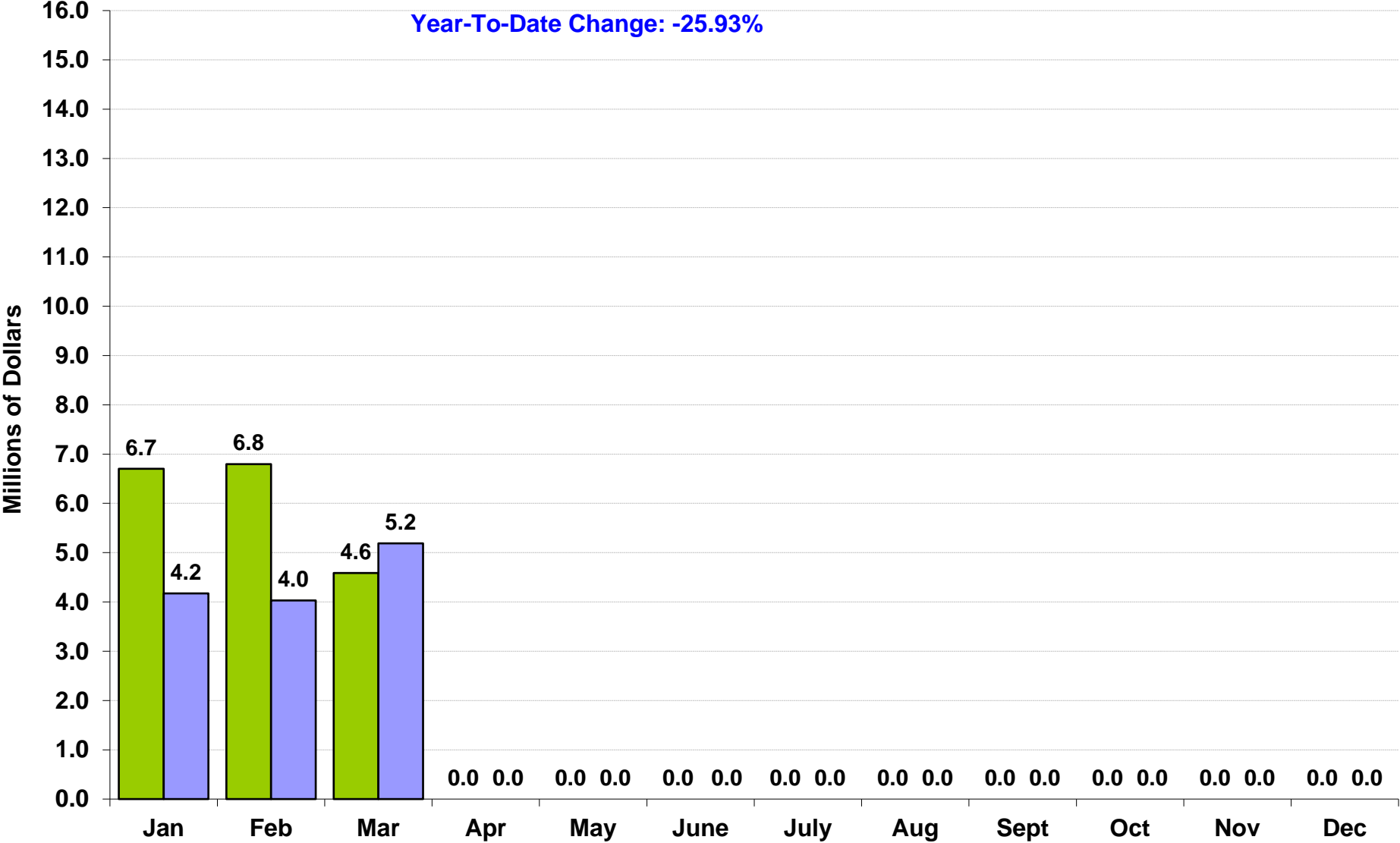
*Note: Excludes Impact of Commercial Volume Discount Program.*



# Fuel Deliveries to Service Areas



# Restaurant Sales at Service Plazas



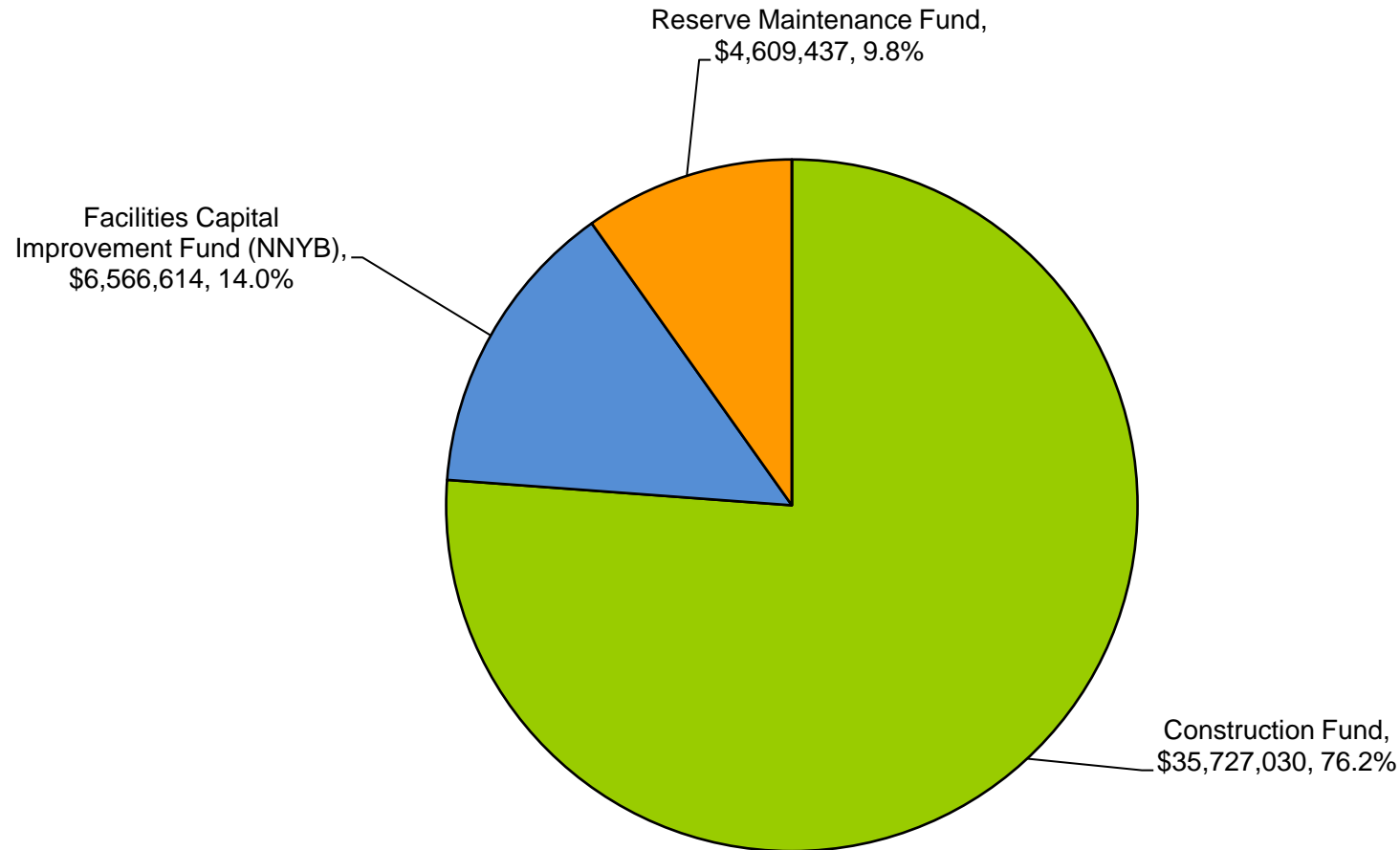
# **Thruway Capital Program**

---

**(Includes New NY Bridge Project)**

# 2021 YTD Capital Program Expenses, by Fund

YTD Total Expenses = \$46.9 million



**Note:**

General Reserve Fund (Cash): State Police Equipment & Facilities

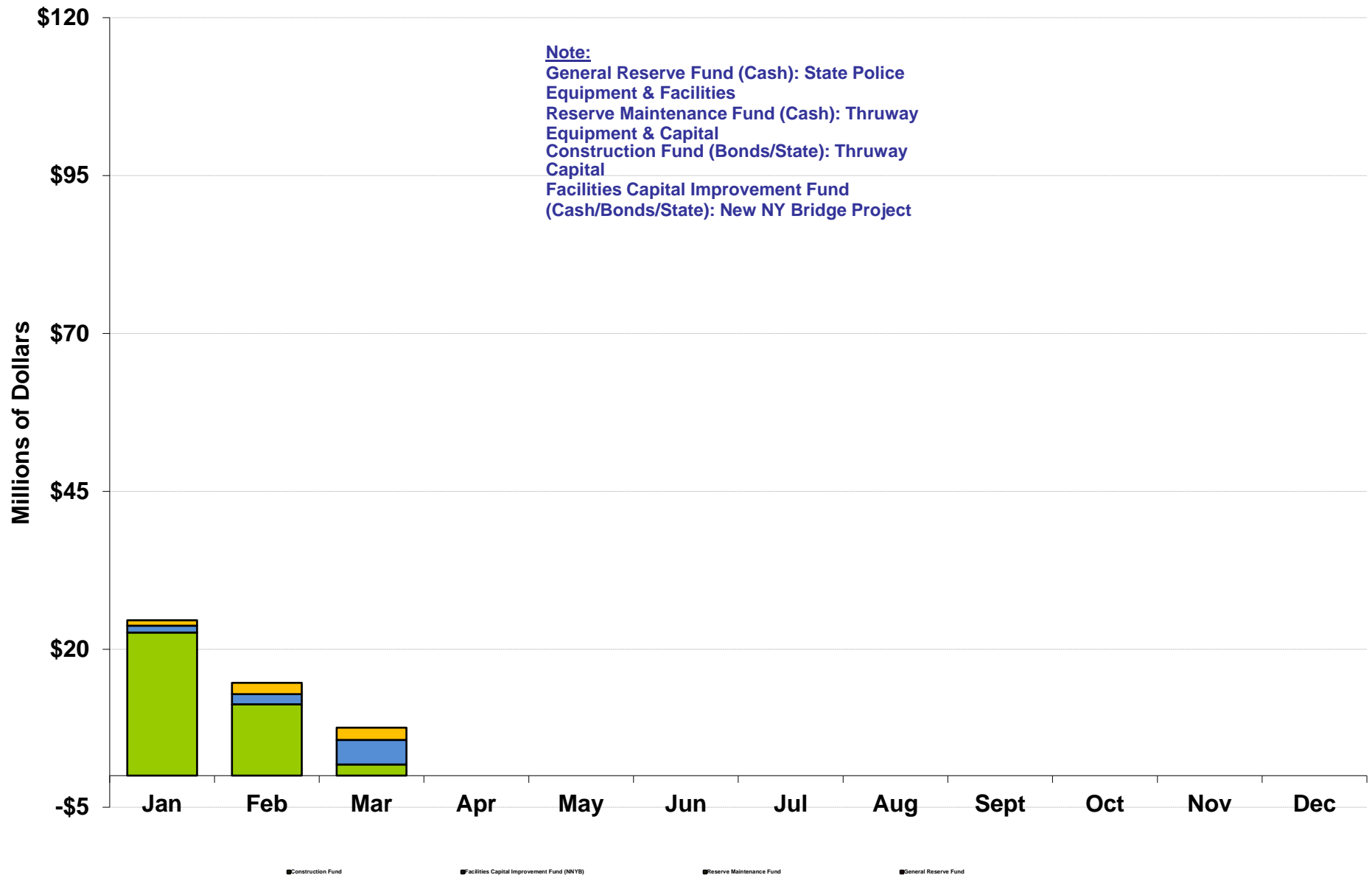
Reserve Maintenance Fund (Cash): Thruway Equipment & Capital

Construction Fund (Bonds): Thruway Capital

Facilities Capital Improvement Fund (Cash/Bonds): New NY Bridge Project

# 2021 YTD Capital Program Expenses, By Fund

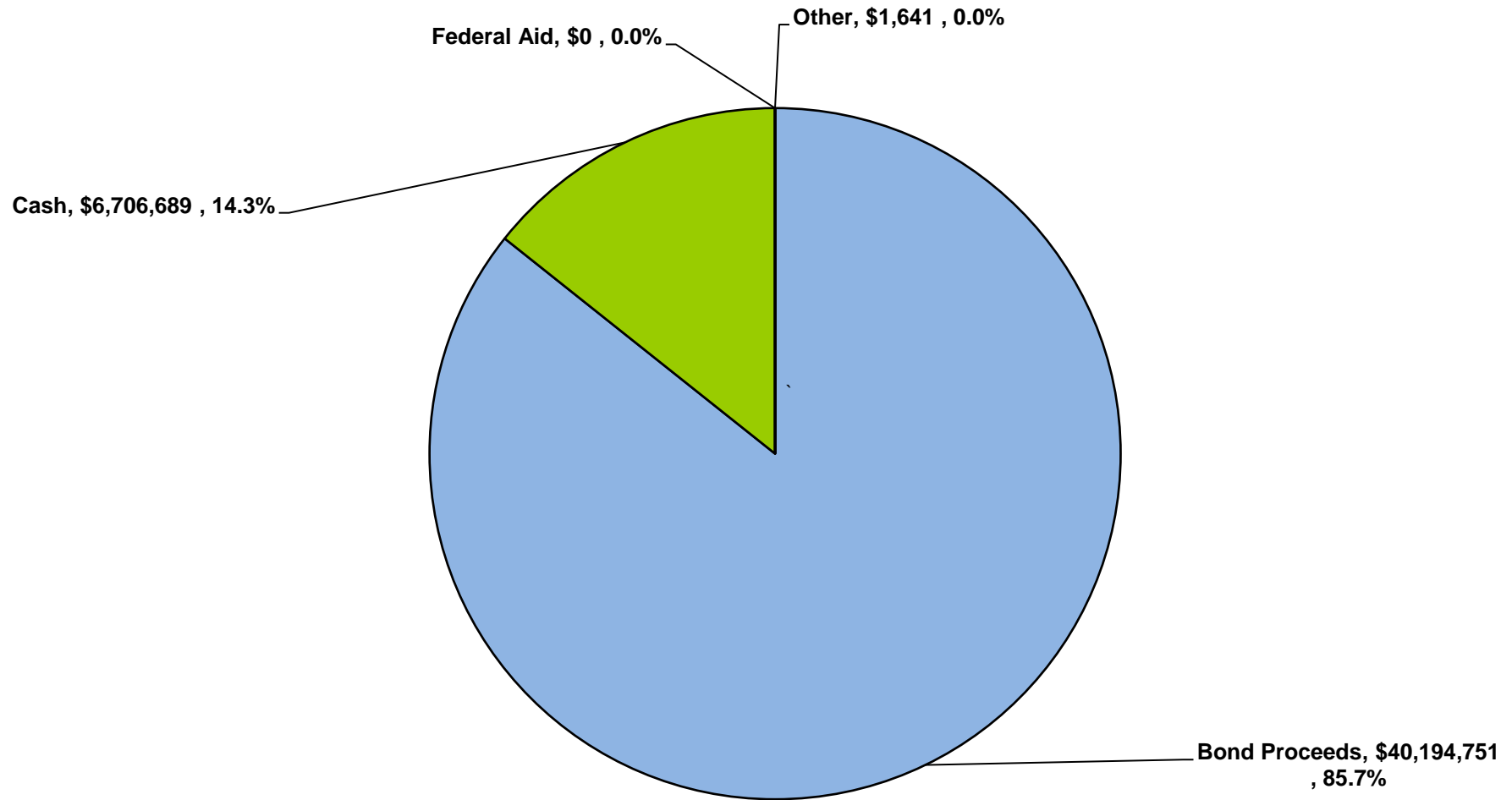
YTD Total Expenses = \$46.9 million





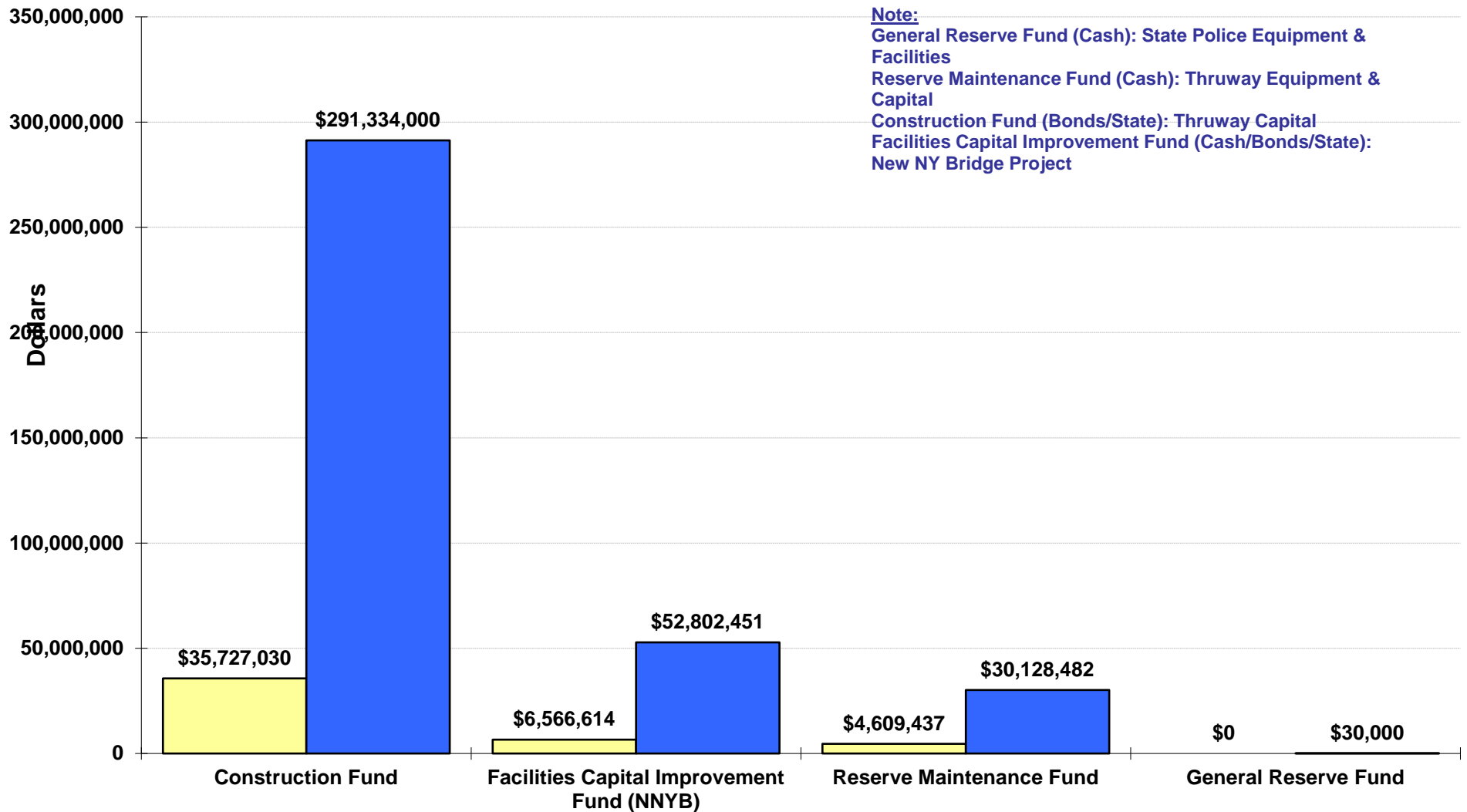
# 2021 YTD Capital Funding Sources

YTD Total Expenses = \$46.9 million



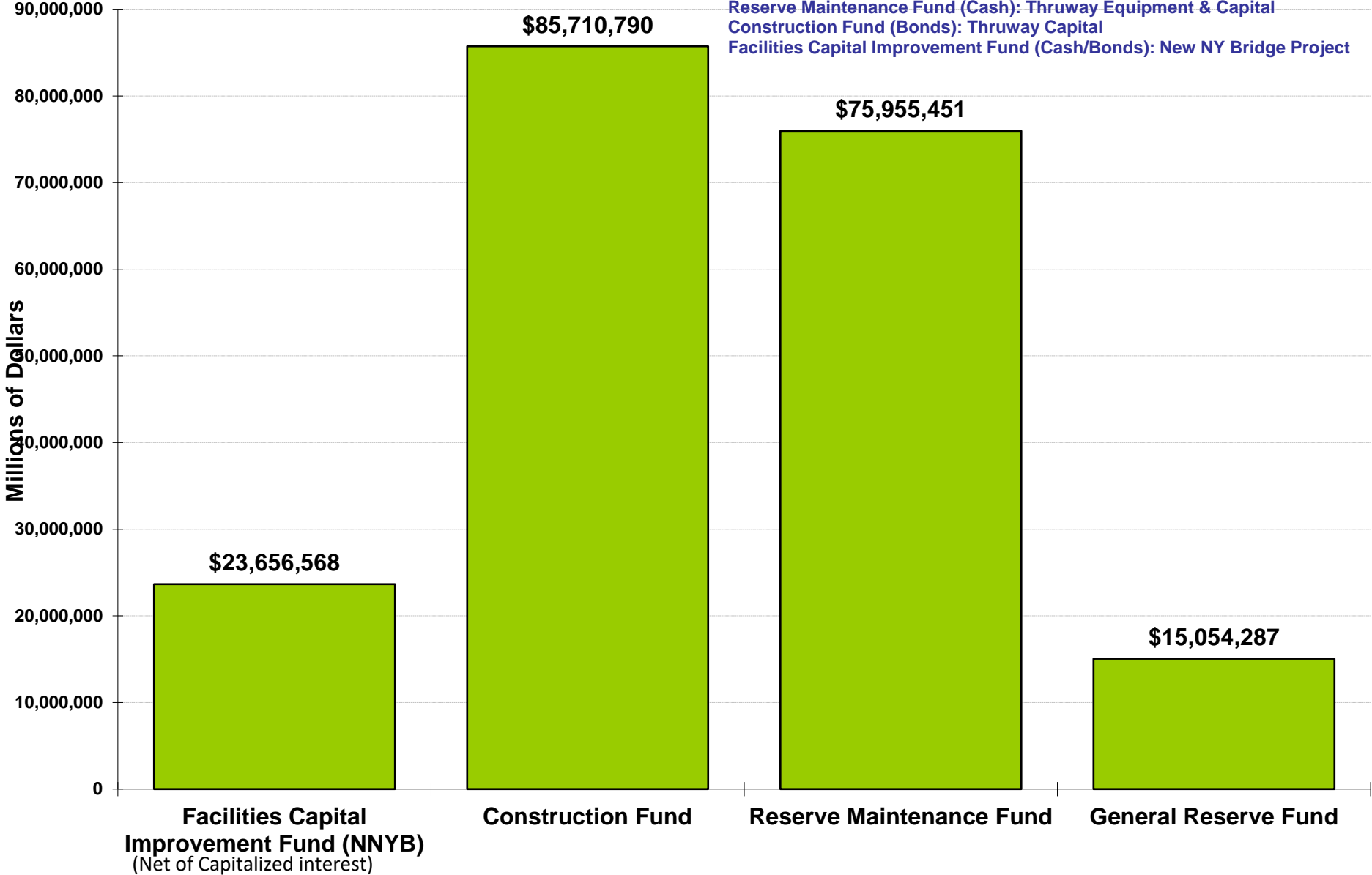
# 2021 YTD Capital Expenses, By Fund

YTD Total Expenses = \$46.9 million

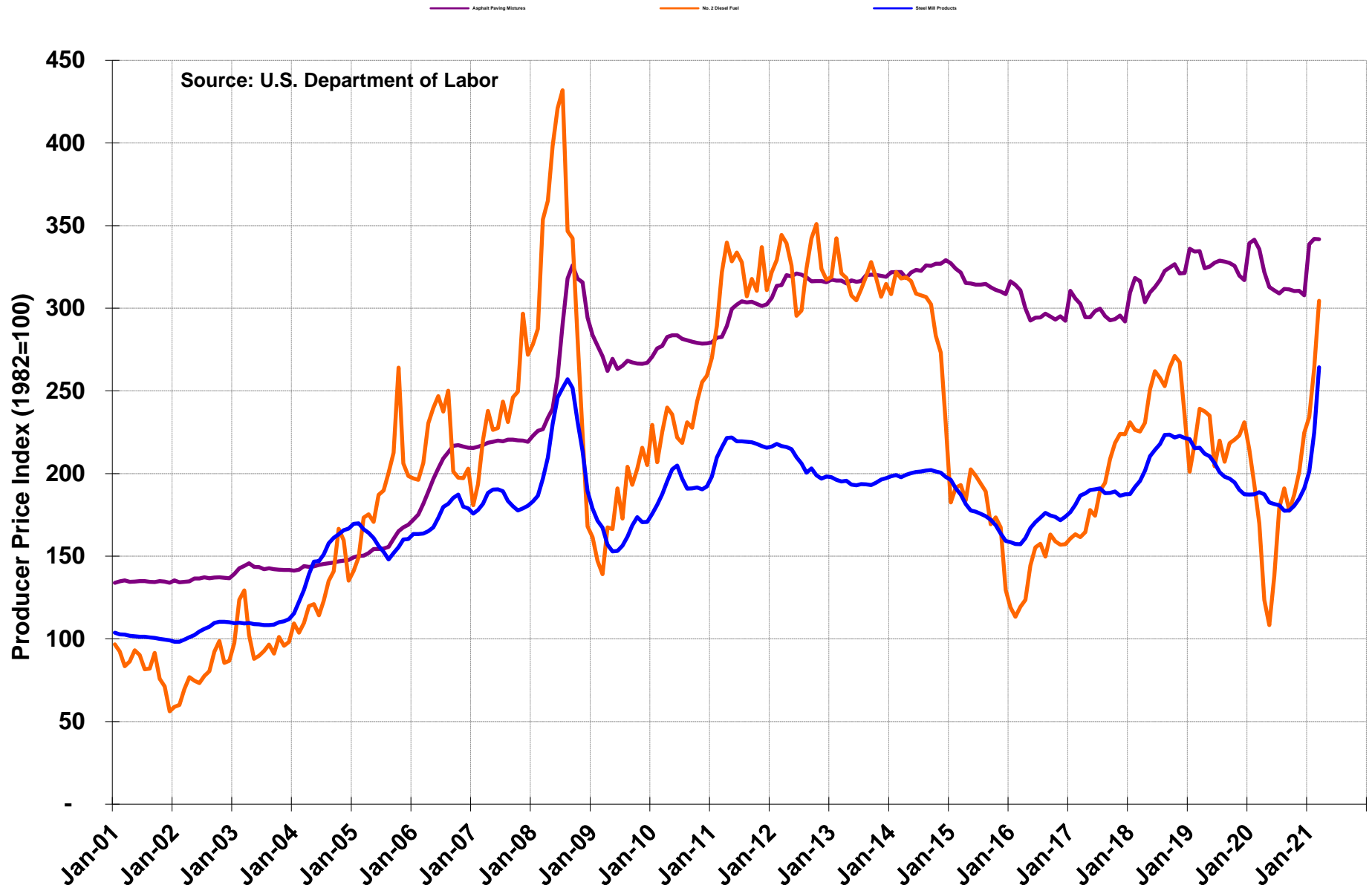


# 2021 Capital Fund Balances at End of Month

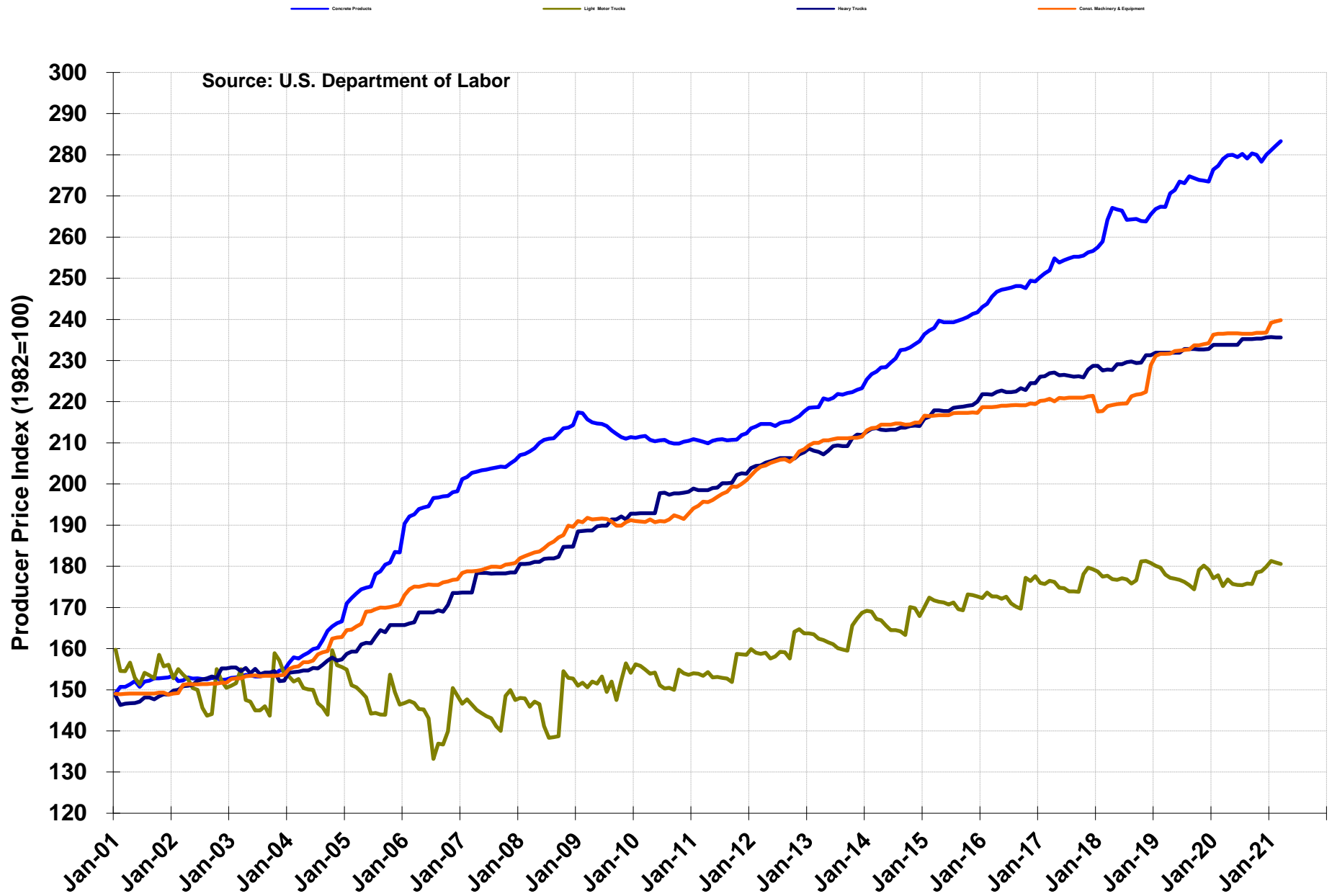
Note:  
General Reserve Fund (Cash): State Police Equipment & Facilities  
Reserve Maintenance Fund (Cash): Thruway Equipment & Capital  
Construction Fund (Bonds): Thruway Capital  
Facilities Capital Improvement Fund (Cash/Bonds): New NY Bridge Project



# Producer Prices: Construction Inputs

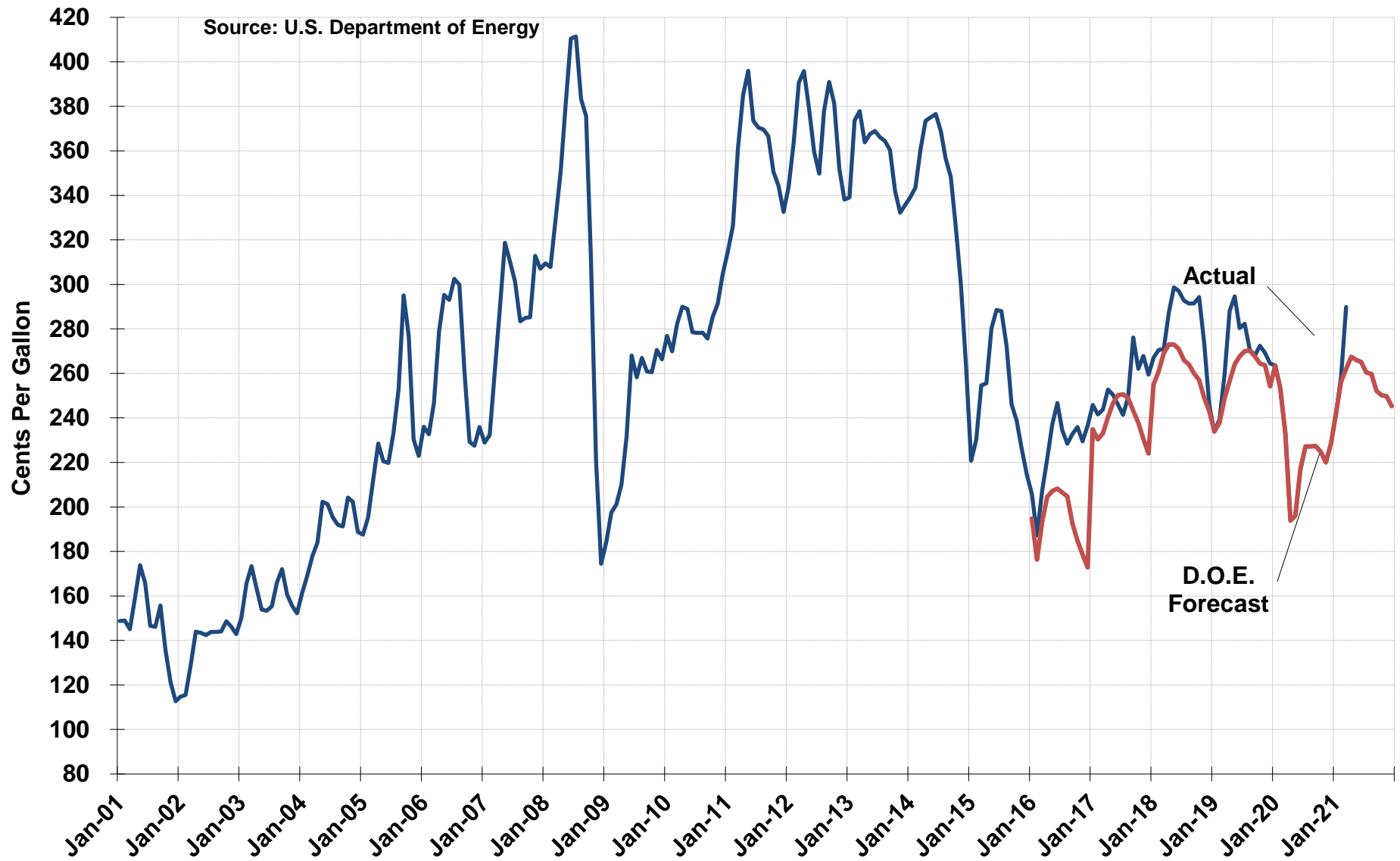


# Producer Prices: Construction Inputs





# Average Retail Price of Gasoline in U.S. All Grades



# Thruway Traffic Information

---

# Thruway Traffic Information

	Year-To-Date			
	2020	2021	Change	Percent Change
<b>Revenue Trips - Location</b>				
Toll Ticket System				
Woodbury to Williamsville	50,204,759	45,301,565	(4,903,194)	-9.8%
Erie Section	4,358,560	4,178,377	(180,183)	-4.1%
Total Ticket System	54,563,319	49,479,942	(5,083,377)	-9.3%
Bridges and Barriers				
Grand Island South	2,617,790	2,364,416	(253,374)	-9.7%
Grand Island North	2,086,809	1,902,420	(184,389)	-8.8%
GMMC Bridge	5,771,142	5,192,834	(578,308)	-10.0%
Yonkers	3,799,116	3,439,306	(359,810)	-9.5%
New Rochelle (I-95)	4,317,754	3,864,286	(453,468)	-10.5%
Spring Valley (Commercial Only)	415,782	433,054	17,272	4.2%
Harriman	3,528,425	3,500,003	(28,422)	-0.8%
Total Bridges and Barriers	22,536,818	20,696,319	(1,840,499)	-8.2%
Total Trips	77,100,137	70,176,261	(6,923,876)	-9.0%
Non-Revenue Trips	421,513	454,771	33,258	7.9%
Total Revenue Trips	76,678,624	69,721,490	(6,957,134)	-9.1%

Revenue Trips - Type	2020	2021	Change	
Passenger	64,350,816	56,730,446	(7,620,370)	-11.8%
Commercial	12,327,808	12,991,044	663,236	5.4%
Total Revenue Trips	76,678,624	69,721,490	(6,957,134)	-9.1%

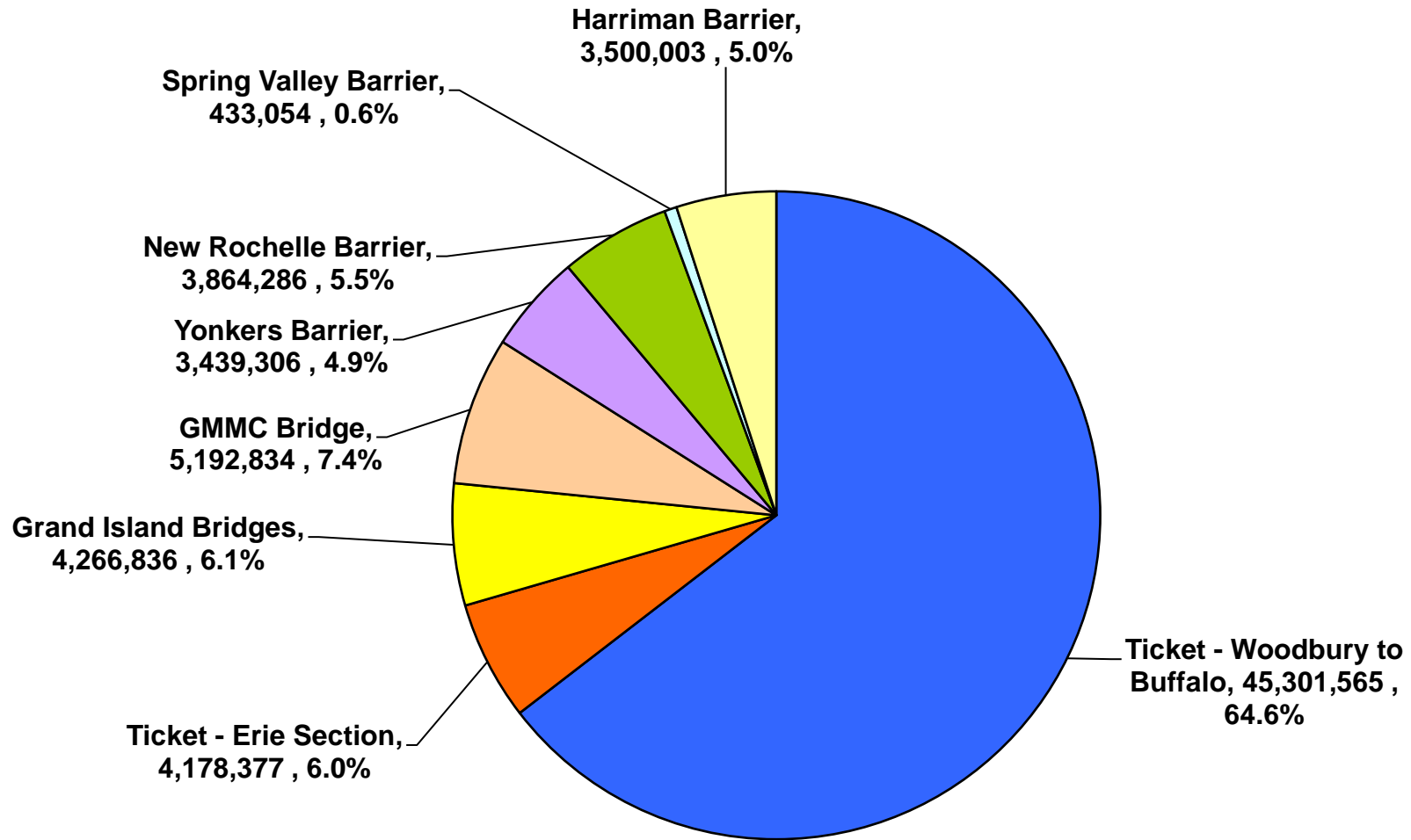
## Miles Traveled - Revenue Trips

Toll Ticket System	1,181,118,152	1,046,335,618	(134,782,534)	-11.41%
NY Division Bridge/Barriers	320,808,512	294,367,735	(26,440,777)	-8.24%
Williamsville-Lackawanna	73,696,188	69,575,625	(4,120,563)	-5.59%
Grand Island Bridges	1,183,494	1,211,082	27,588	2.33%
Total Revenue Trip Miles	1,576,806,346	1,411,490,060	(165,316,286)	-10.48%

## Average Trip Length (Miles) - All Trips - Ticketed System

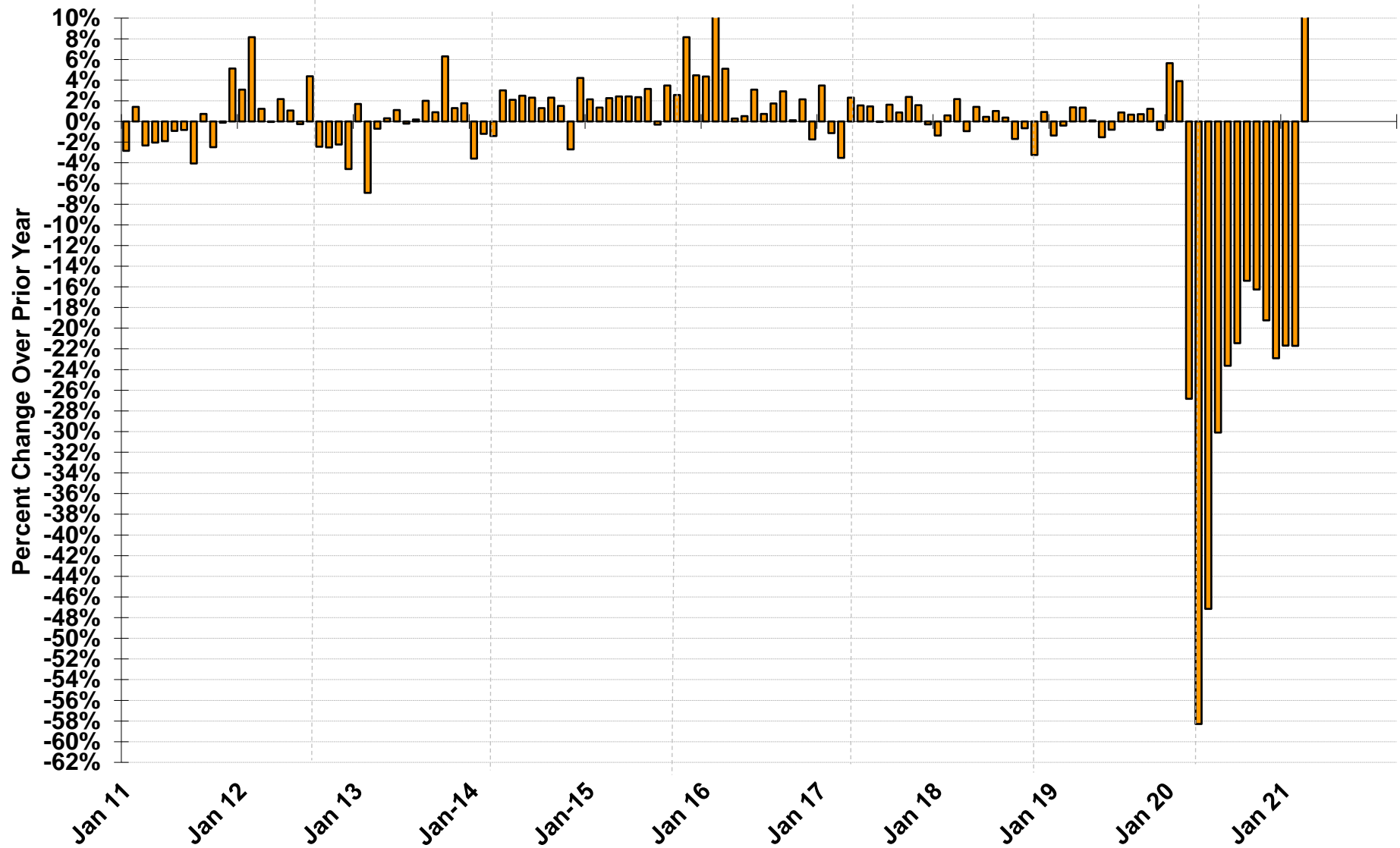
Passenger	33.50	13.82	(19.68)	-58.75%
Commercial	62.01	19.08	(42.93)	-69.23%
Overall	37.24	14.92	(22.32)	-59.94%

# 2021 YTD Total Thruway Trips, By Location



# Percent Change in Monthly Thruway Traffic

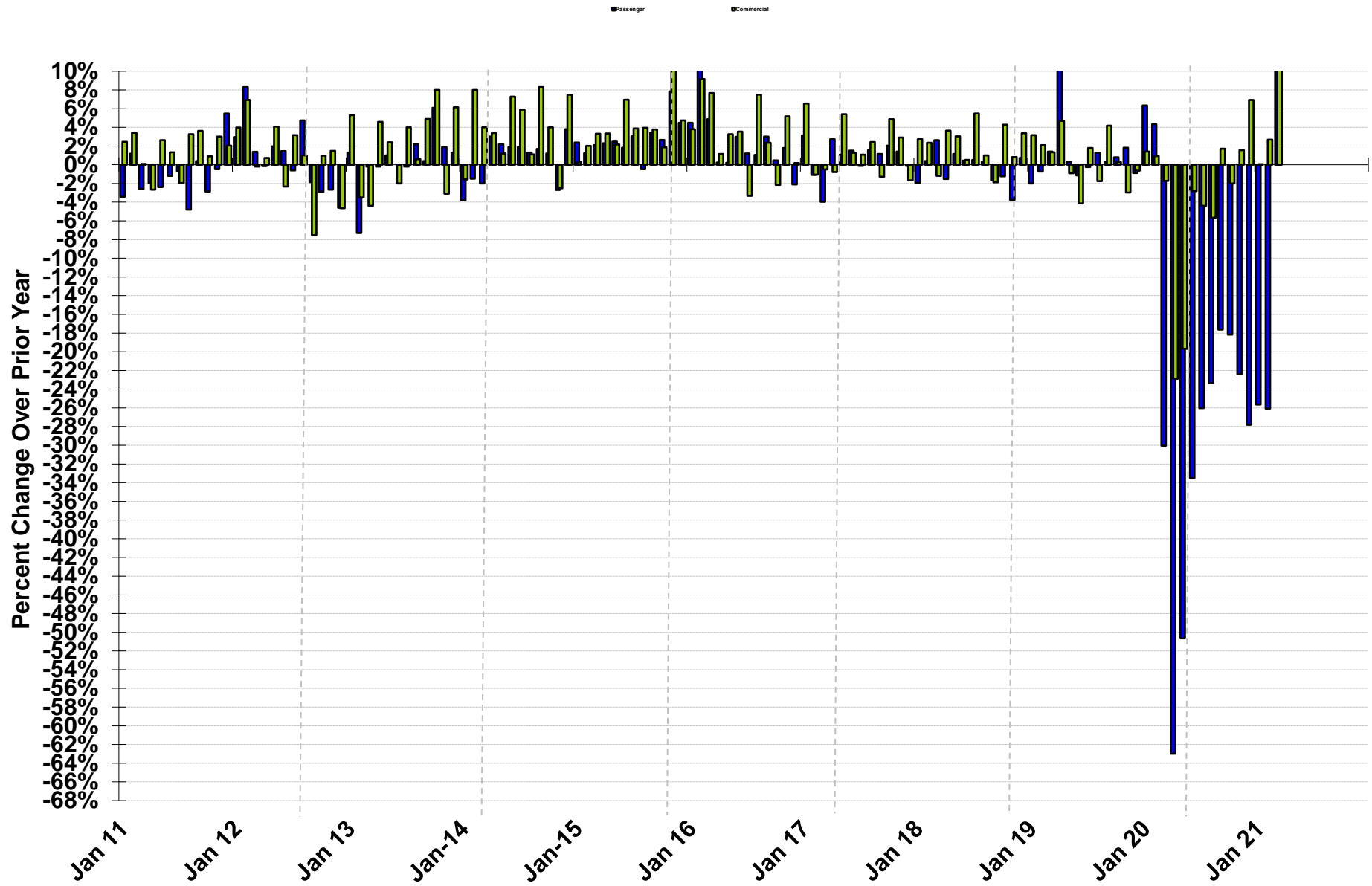
Total Passenger and Commercial Revenue Trips





# Percent Change in Monthly Thruway Traffic

By Passenger and Commercial Revenue Trips



# Operating Expenses and Revenues

(Variance from 2021 Budget)

