



Monthly Financial Report

April 2021
Supplement



Operating Results

Operating Expenses

Category	Year-To-Date			Percent Change
	2020	2021	Change	
Thruway Operating Expenses				
Admin and General	\$8,105,077	\$8,036,547	(\$68,530)	-0.8%
Engineering Services	1,795,903	1,993,002	197,099	11.0%
Maintenance Engineering				
Thruway Maintenance	29,266,758	31,180,016	1,913,258	6.5%
Equipment Maintenance	8,910,190	9,538,717	628,527	7.1%
Finance and Accounts	2,383,519	1,922,339	(461,180)	-19.3%
Operations				
Traffic and Services	2,952,037	2,962,466	10,429	0.4%
Toll Collection	31,137,301	27,756,958	(3,380,343)	-10.9%
General Charges *	35,290,908	32,932,355	(2,358,553)	-6.7%
Total Thruway Operating	\$119,841,693	\$116,322,400	(\$3,519,293)	-2.9%
Other Operating Expenses				
State Police**	\$19,122,146	\$19,828,273	\$706,127	3.7%
Total Other Operating Expenses	\$19,122,146	\$19,828,273	706,127	3.7%
Total Operating Expenses	\$138,963,839	\$136,150,673	(\$2,813,166)	-2.0%

* Includes changes relative to unfunded OPEB and Pension Adjustment (See Notes C and D of Monthly Statement) and are as follows:

Pension Contributions	\$7,927,000	\$7,114,668	(\$812,332)	-10.2%
Pension Adjustment LT liability and deferred Pension resources	0	\$0	\$0	-
Unfunded Retiree Health Insur. & Other Benefits	0	0	0	-
Funded Health Insurance & Other Benefits	21,548,019	20,993,870	(554,149)	-2.6%
Social Security	3,544,541	3,133,795	(410,746)	-11.6%
Workers' Compensation Insurance	2,987,000	2,400,000	(587,000)	-19.7%
Other General Charges	(715,652)	(709,978)	5,674	-0.8%
Total General Charges	\$35,290,908	\$32,932,355	(\$2,358,553)	-6.7%

** Reflects the State Police expenses that the Authority reimburses the State as part of the 2016/17 Approved State Budget as of 4/1/2016. This includes reimbursement for purchase of vehicles and equipment.

Operating Revenues

Category	Year-To-Date			Percent Change
	2020	2021	Change	
Toll Revenue	\$185,462,861	\$208,774,940	\$23,312,079	12.6%
Passenger Revenue	95,020,886	101,628,230	6,607,344	7.0%
Commercial Revenue	90,441,975	107,146,710	16,704,735	18.5%
Concession Revenue	2,016,474	1,154,877	(861,597)	-42.7%
Gasoline Revenue	530,696	500,578	(30,118)	-5.7%
Restaurant Revenue	1,485,778	654,299	(831,479)	-56.0%
E-ZPass Revenue	6,456,915	4,272,176	(2,184,739)	-33.8%
Toll By Mail Fee's ***	6,166,839	4,529,438	(1,637,401)	-26.6%
Fiber Optics User Fees	58,765	2,971,642	2,912,877	4956.8%
Rental Income	2,091,906	680,085	(1,411,821)	-67.5%
Interest Earnings	2,629,858	61,662	(2,568,196)	-97.7%
Special Hauling Permits	672,347	671,841	(506)	-0.1%
Sundry Revenue	433,676	322,039	(111,637)	-25.7%
Total Operating Revenue	\$205,989,641	\$223,438,700	\$17,449,059	8.5%

*** Toll by Mail fee's are from the All Electronic Toll Collection operation at the Gov. Mario M. Cuomo Bridge Barrier that started April 2016 and for the North & South Grand Island Bridge Barriers in March 2018, Harriman 2018, Yonkers November 2018, New Rochelle

Operating Budget vs. Actual

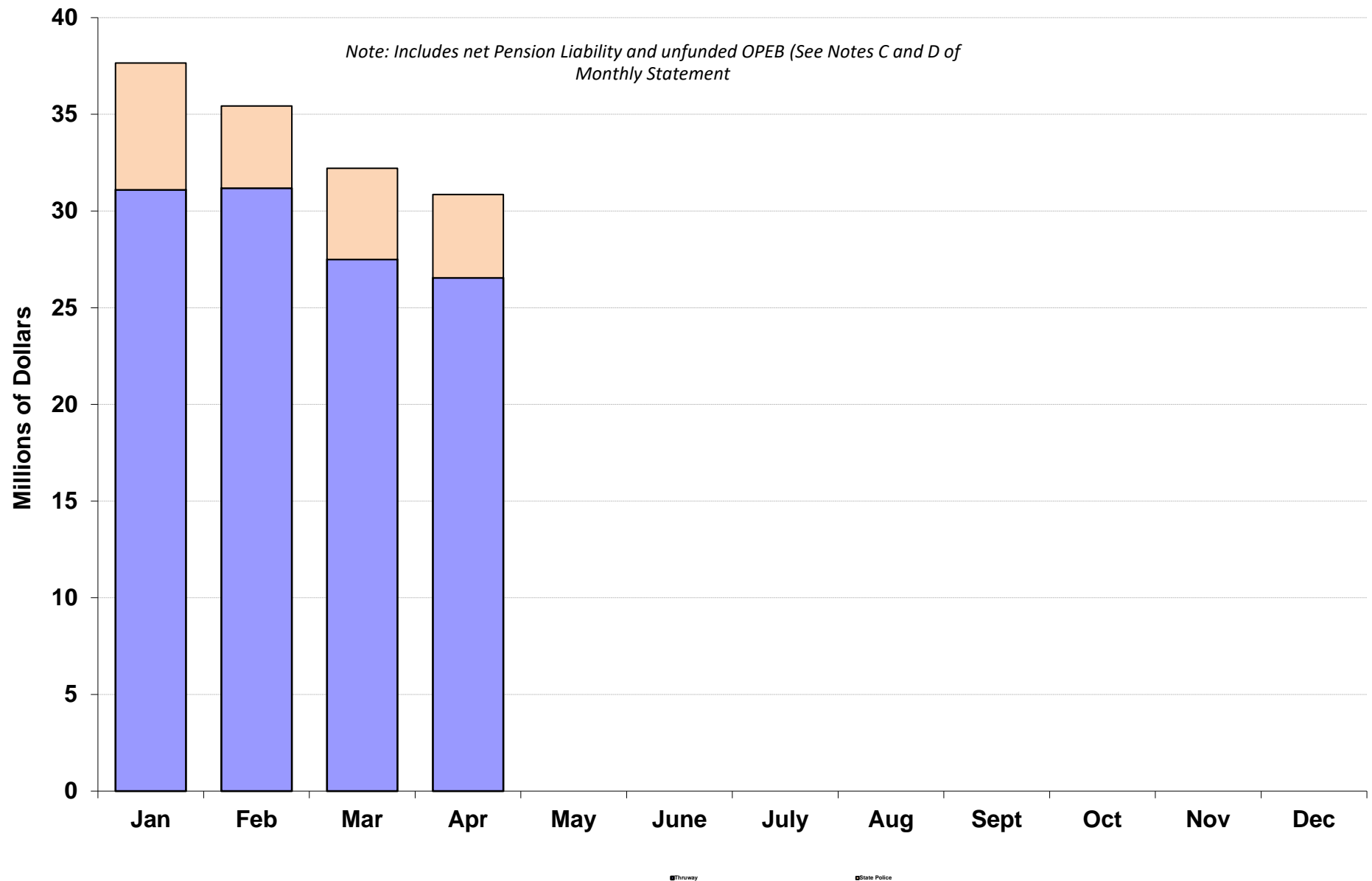
	Year-To-Date			Percent Difference
	2021 Budget	Actual	Difference	
Total Operating Expenses:				
Thruway Operating Expenses *	\$113,209,177	\$116,226,896	\$3,017,719	2.7%
Claims, Envir. Reserves and AET trans.	333,333	0	(333,333)	-100.0%
Other Operating Expenses- State Police **	20,552,375	19,828,273	(724,102)	-3.5%
Total Operating Expenses	\$134,094,885	\$136,055,169	\$1,960,284	1.5%
Total Operating Revenues:				
Toll Revenue ***	\$208,431,037	\$208,774,940		
Adjust to Cash basis w/ AET receivable		(9,732,553)		
Net Toll Revenue ***	\$208,431,037	\$199,042,387	(\$9,388,650)	-4.5%
Concession Revenue	1,207,346	\$1,154,877	(52,469)	-4.3%
E-ZPass and Tolls By Mail fee's	18,904,110	\$8,801,614	(10,102,496)	-53.4%
Sundry, Interest & Special Hauling Revenue	4,921,808	\$4,682,604	(239,205)	-4.9%
Total Operating Revenue	\$233,464,301	\$213,681,481	(\$19,782,820)	-8.5%

* Excludes unfunded OPEB (See Note D of Monthly Statement) and adjustment of net Pension liability and changes in Inflows/outflows adopted in 2015 in accordance with GASB 68 (see Note C).

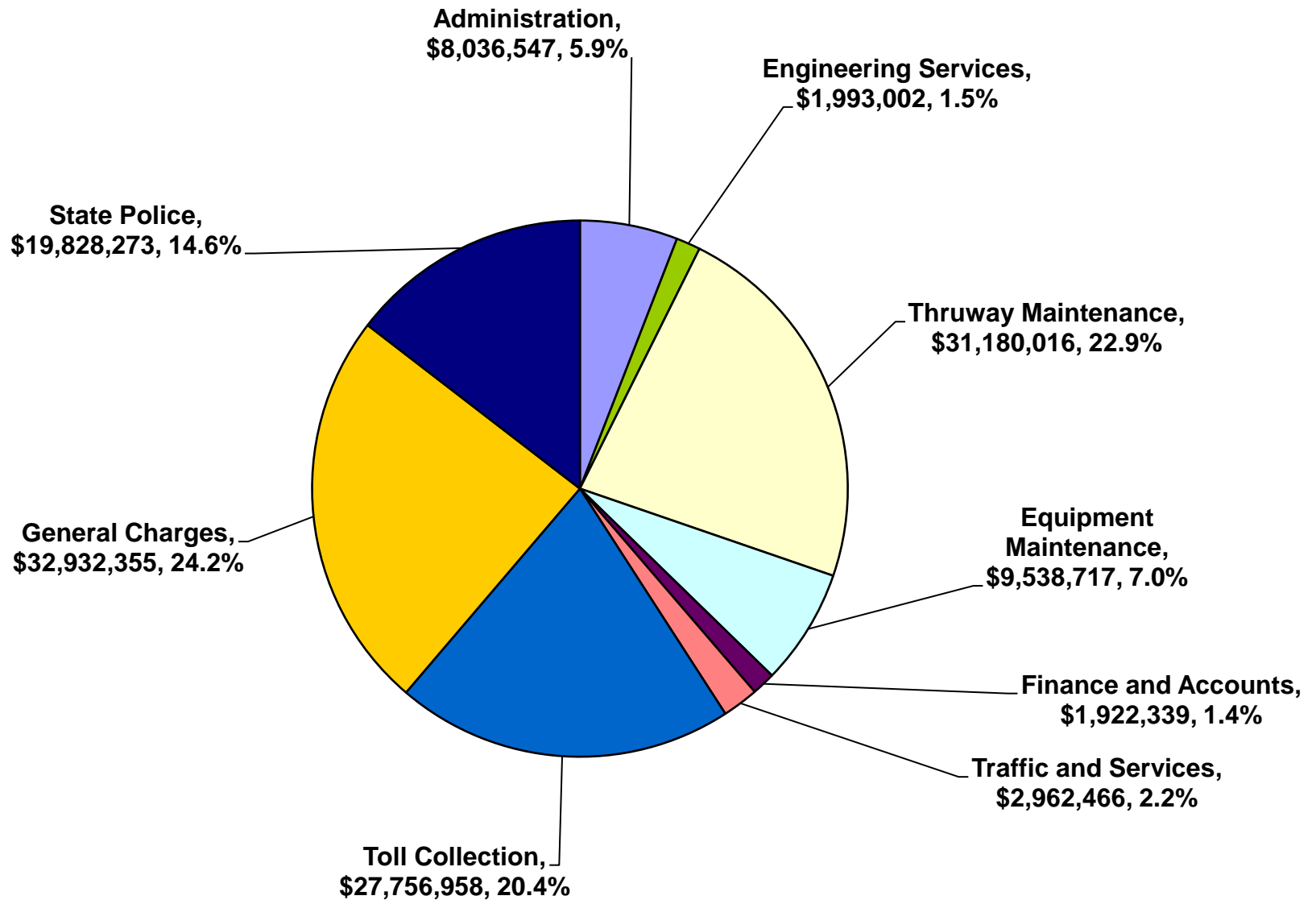
** The State's 2016/17 Budget provides the Authority reimburse for State Police - Troop T costs as of 4/1/2016. This includes reimbursement for equipment and vehicles that are typically billed later in year.

*** Includes the adjustment of accounts receivable for Tolls by Mail which is outstanding and thus not available until paid. In addition, Stantec's projections factors in the delay of receipt of Toll's by Mail revenues at All Electronic Toll locations.

2021 YTD Operating Expenses

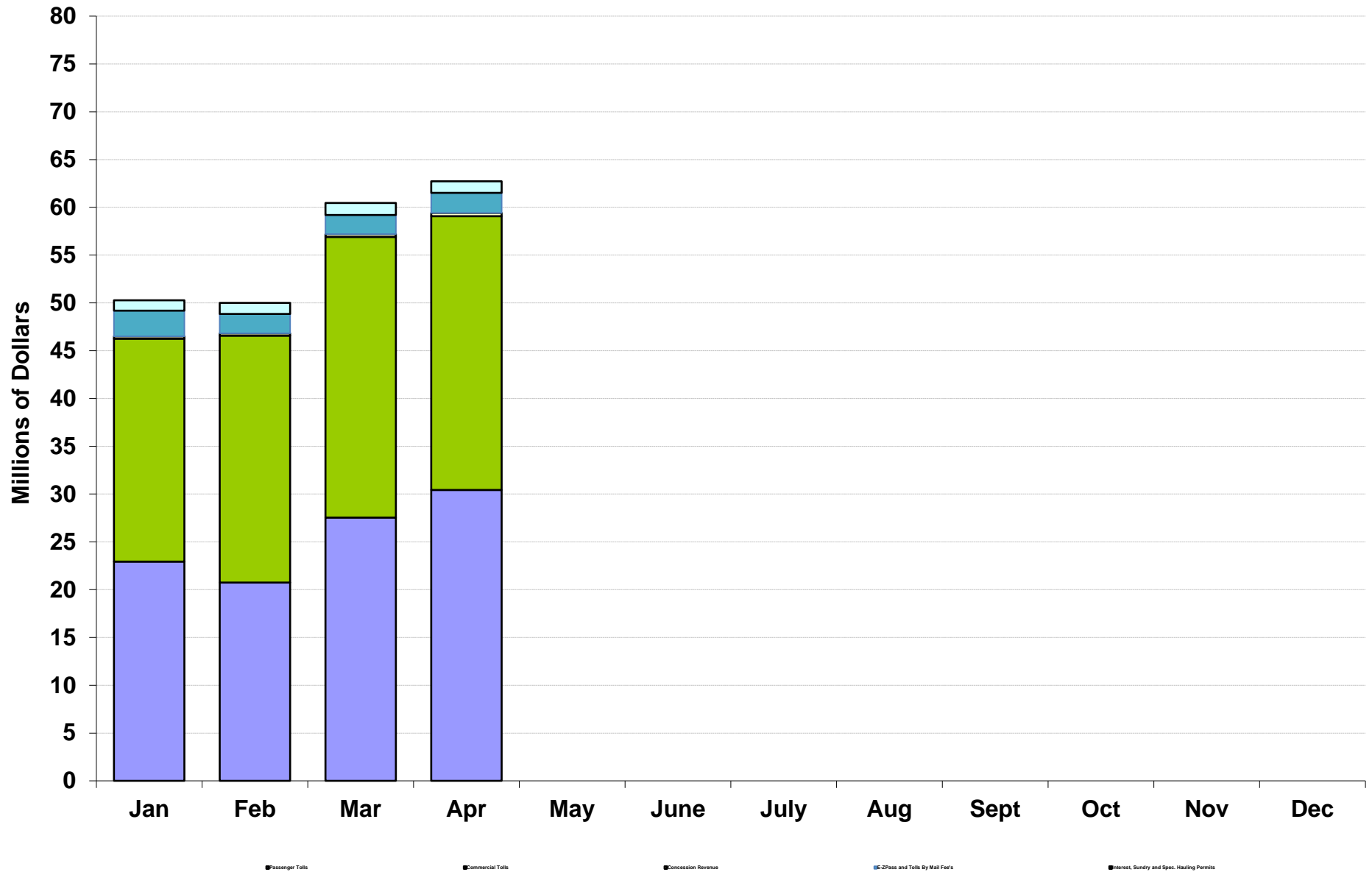


2021 YTD Operating Expenses

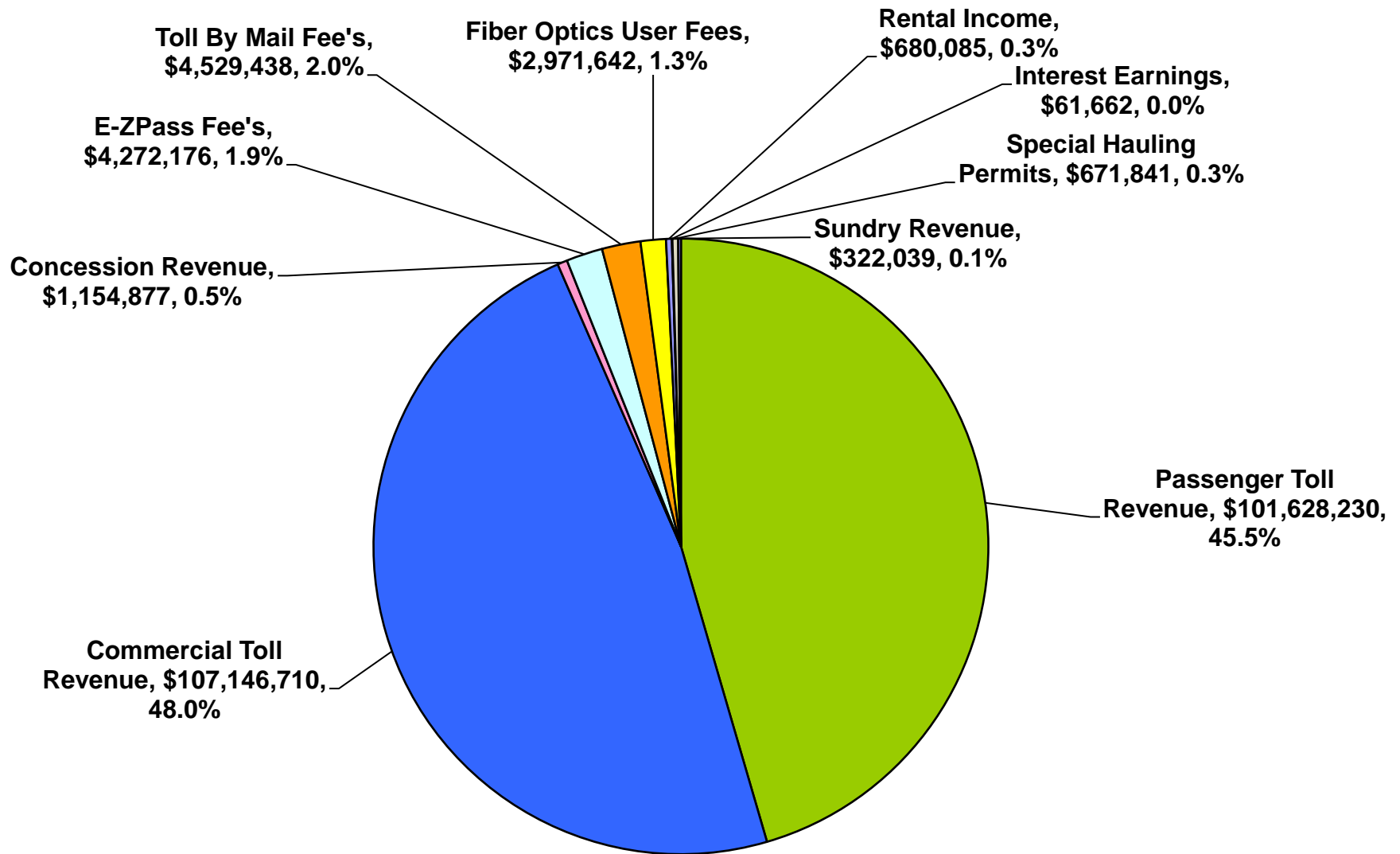


Note: General Charges include net Pension liability and unfunded OPEB (See Notes C and D of Monthly Statement)

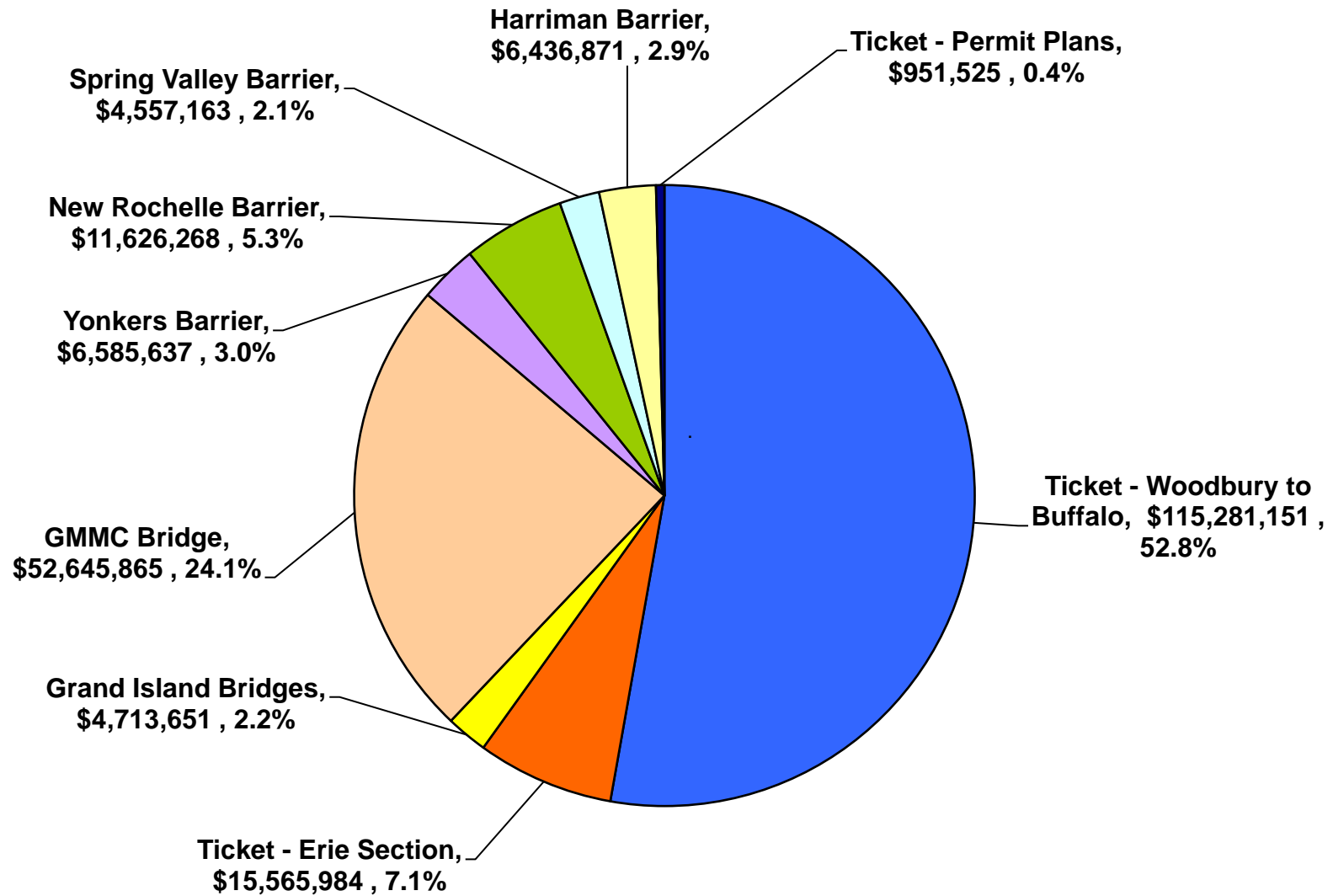
2021 YTD Operating Revenues



2021 YTD Operating Revenue

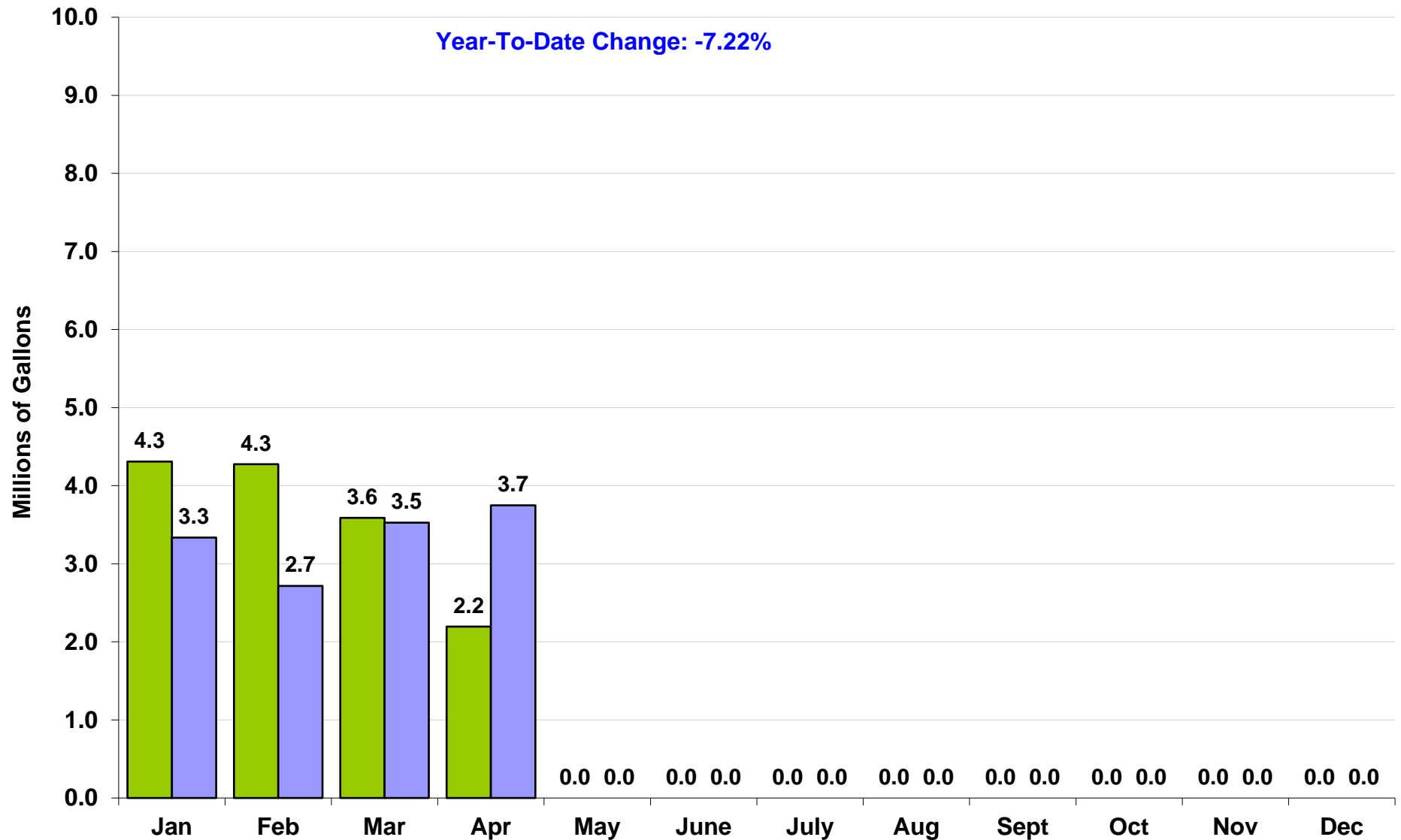


2021 YTD Toll Collections, By Location

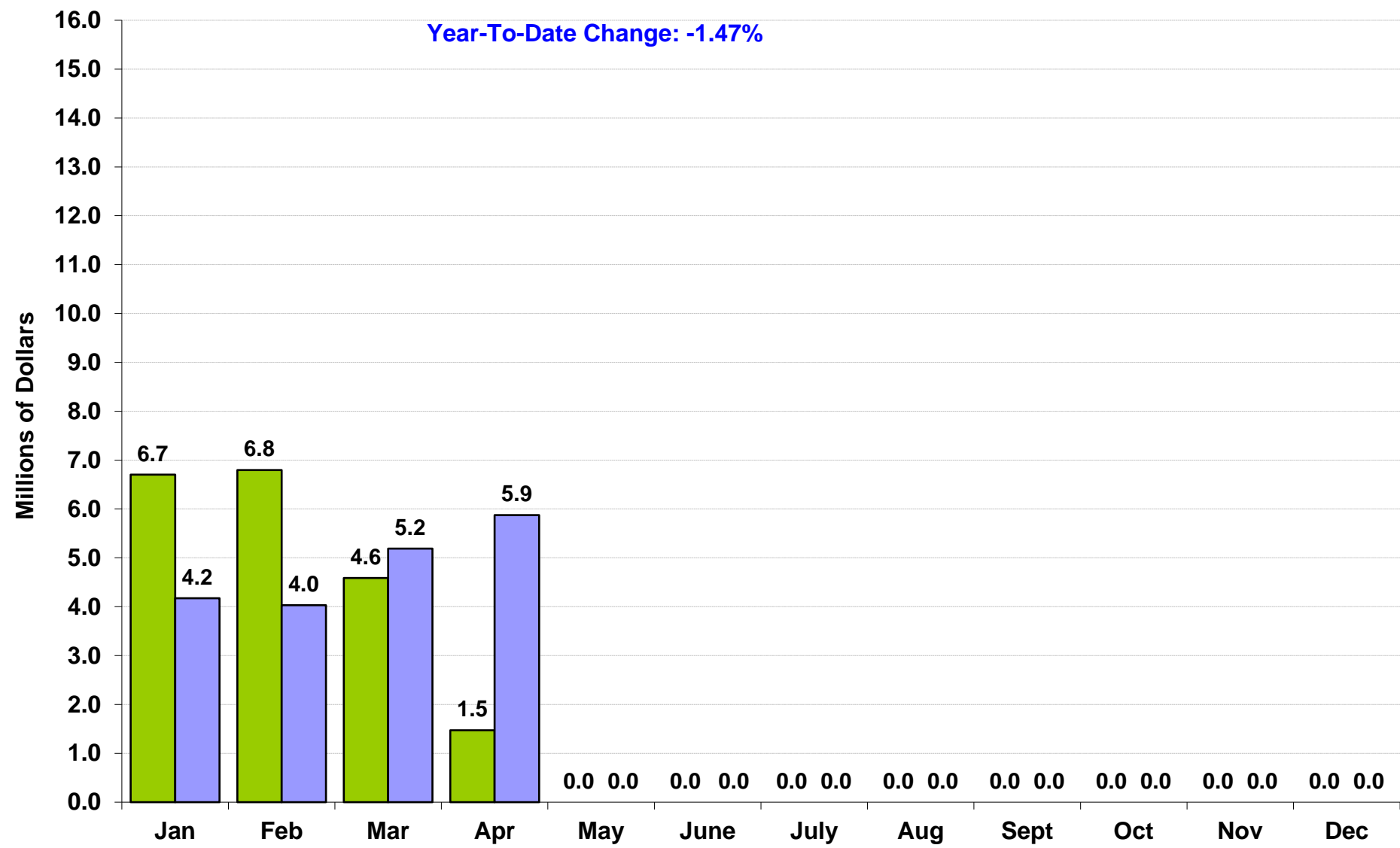


Note: Excludes Impact of Commercial Volume Discount Program.

Fuel Deliveries to Service Areas



Restaurant Sales at Service Plazas

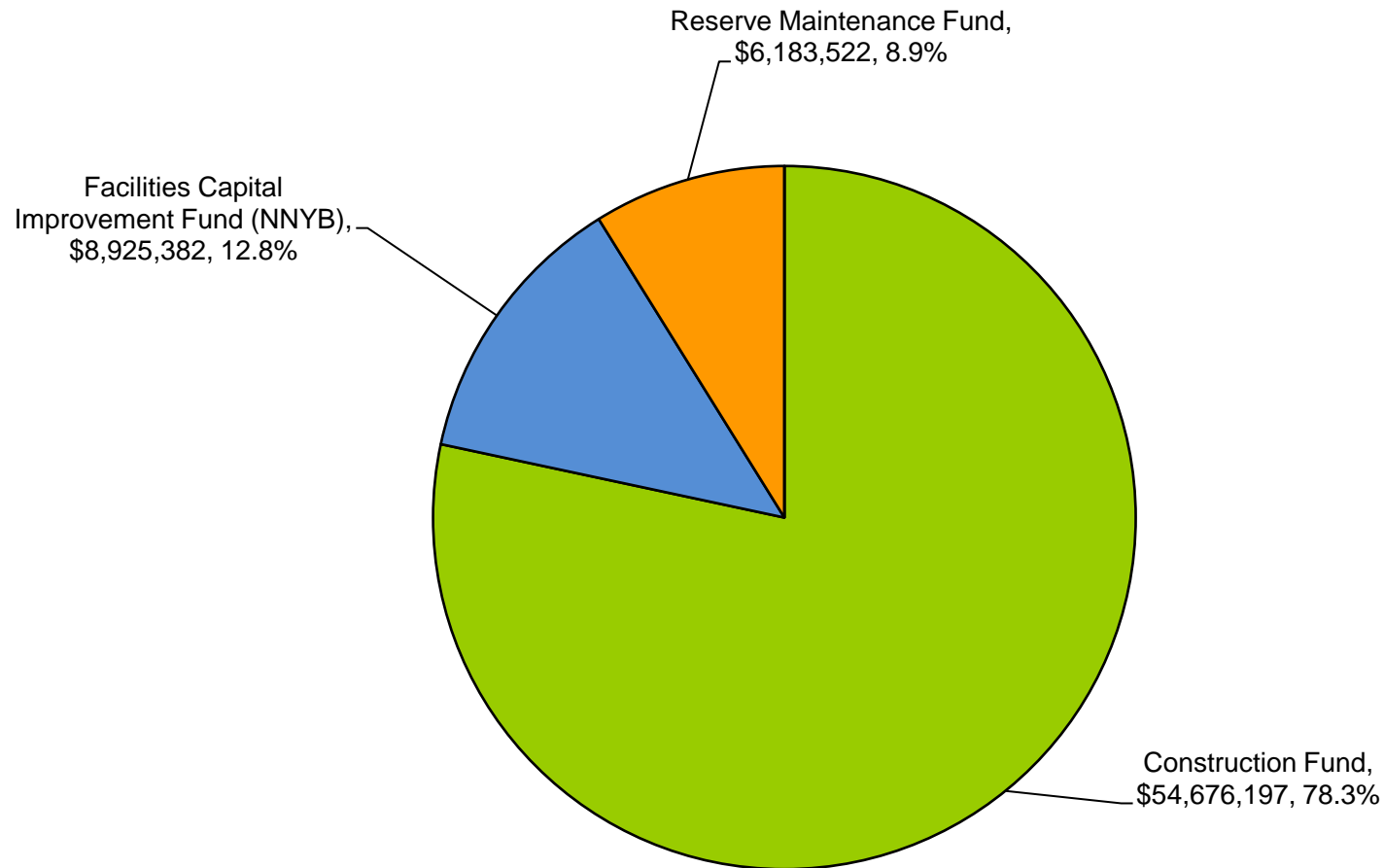


Thruway Capital Program

(Includes New NY Bridge Project)

2021 YTD Capital Program Expenses, by Fund

YTD Total Expenses = \$69.8 million



Note:

General Reserve Fund (Cash): State Police Equipment & Facilities

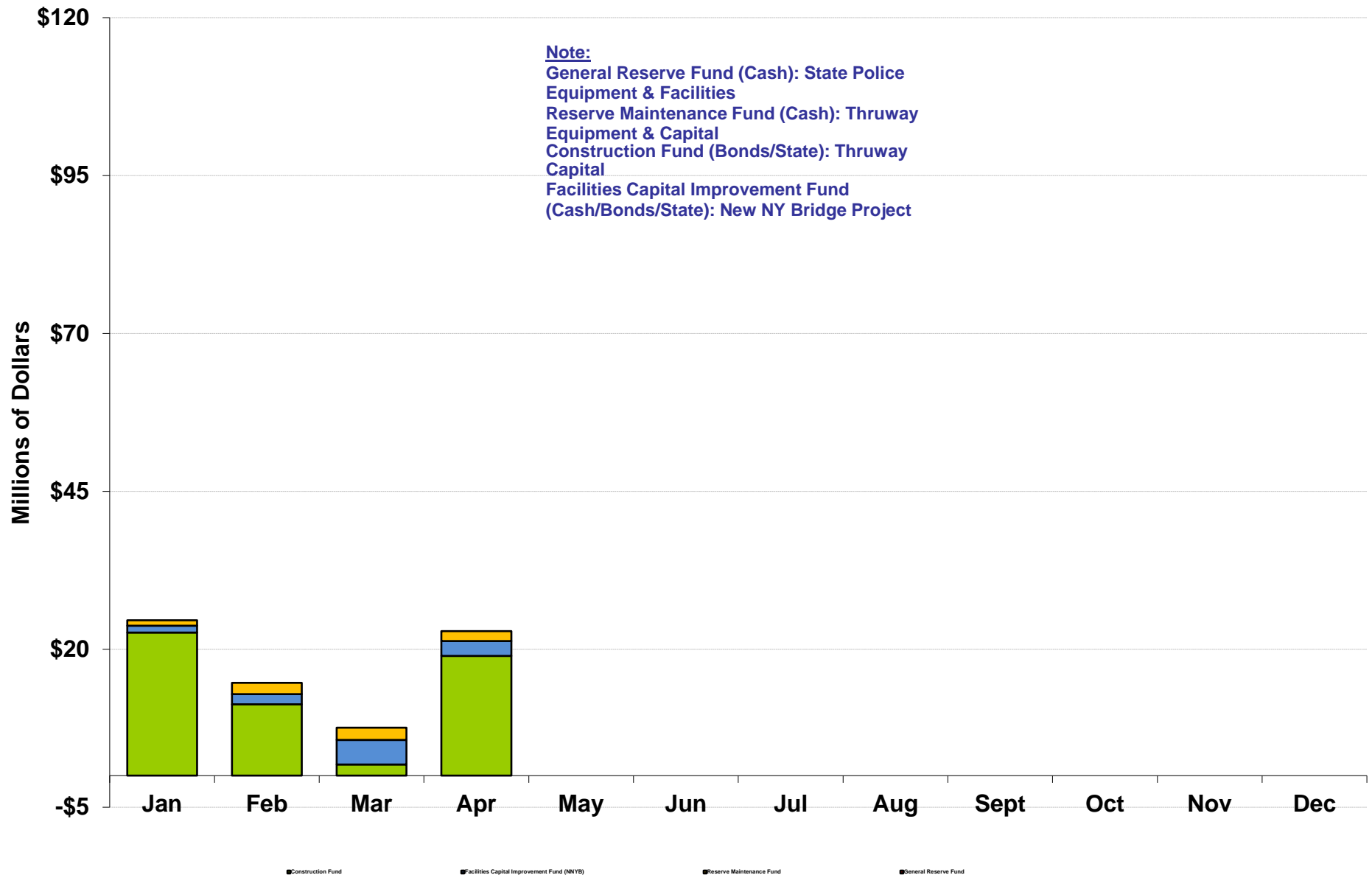
Reserve Maintenance Fund (Cash): Thruway Equipment & Capital

Construction Fund (Bonds): Thruway Capital

Facilities Capital Improvement Fund (Cash/Bonds): New NY Bridge Project

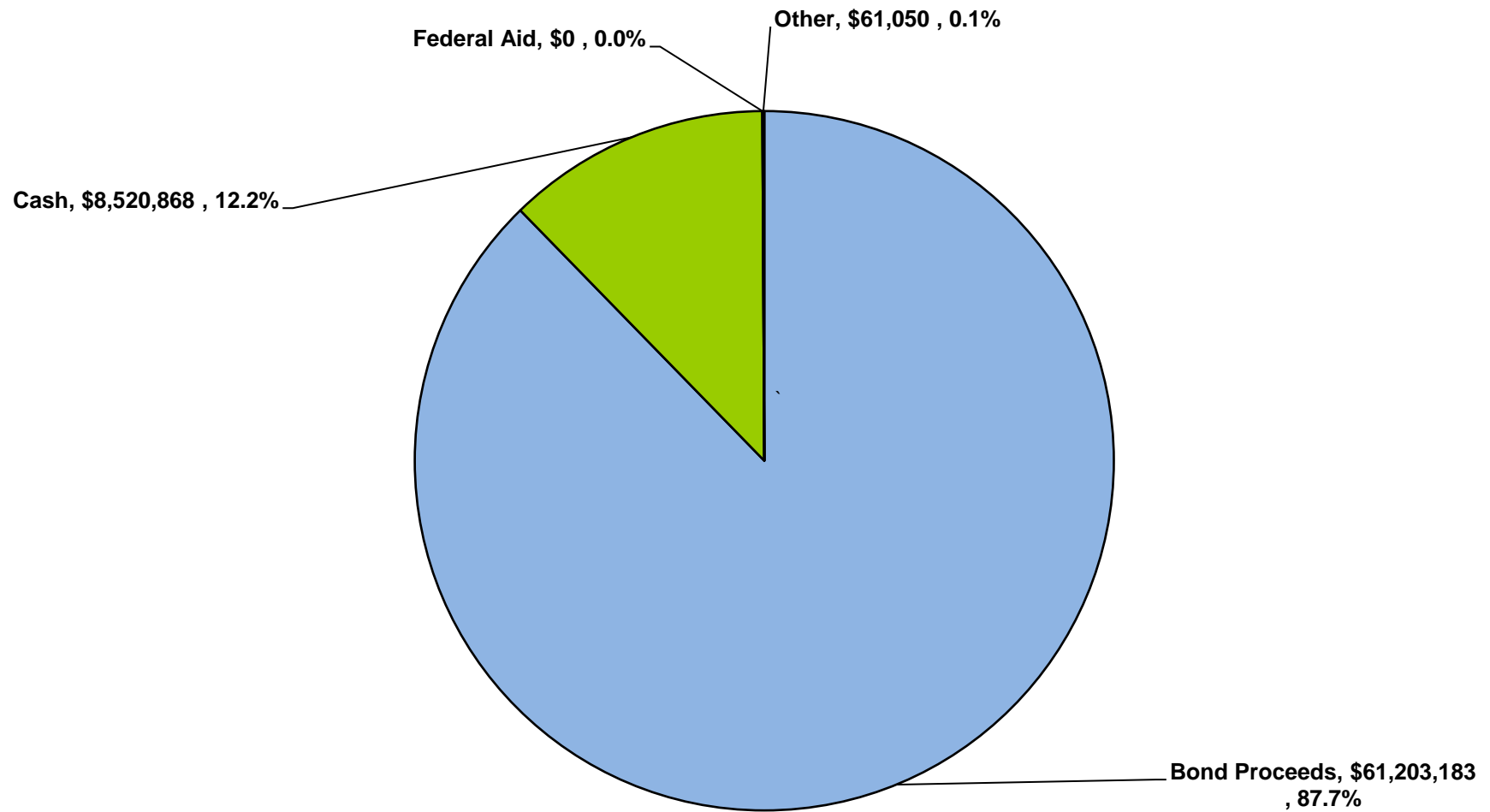
2021 YTD Capital Program Expenses, By Fund

YTD Total Expenses = \$69.8 million



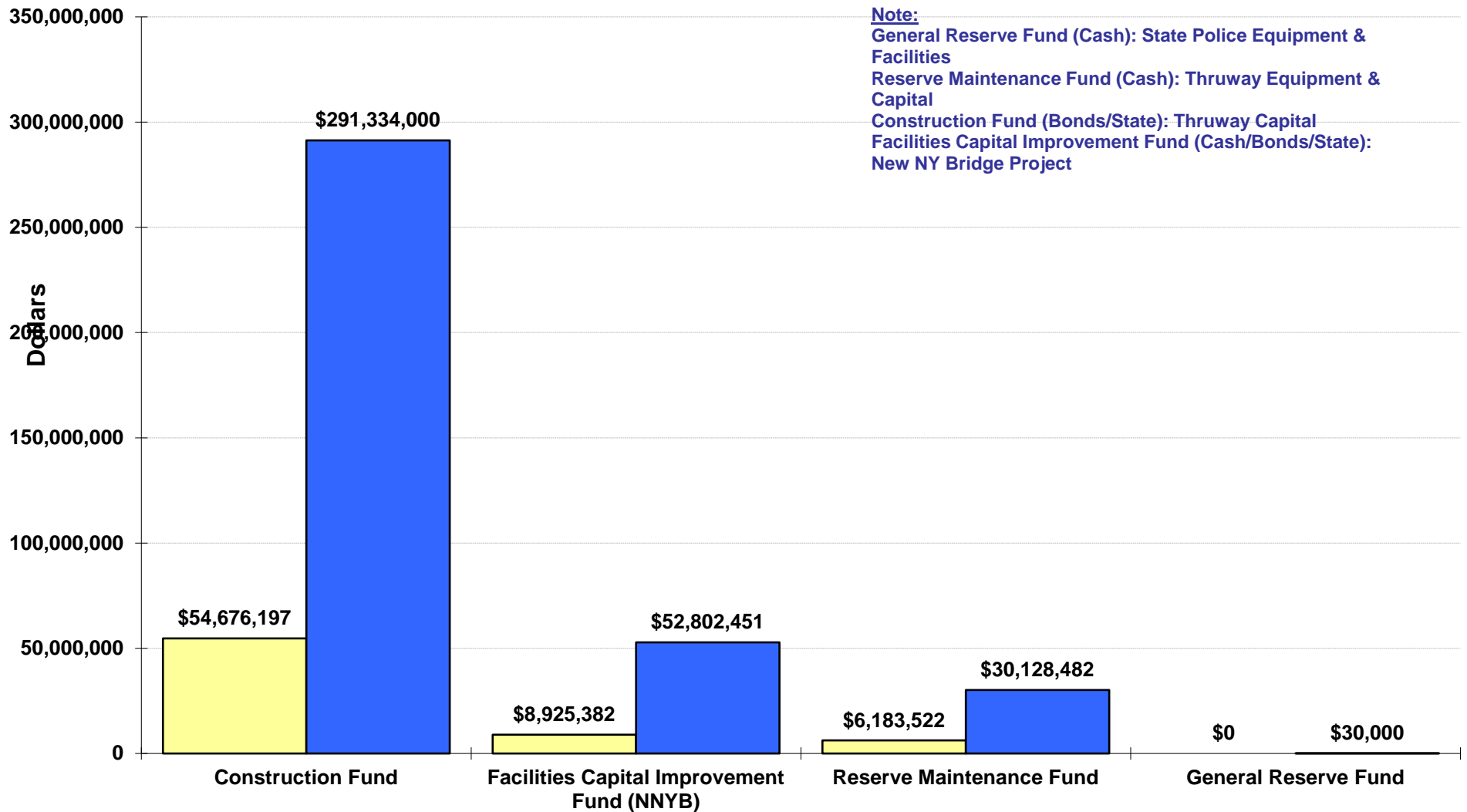
2021 YTD Capital Funding Sources

YTD Total Expenses = \$69.8 million



2021 YTD Capital Expenses, By Fund

YTD Total Expenses = \$69.8 million



2021 Capital Fund Balances at End of Month

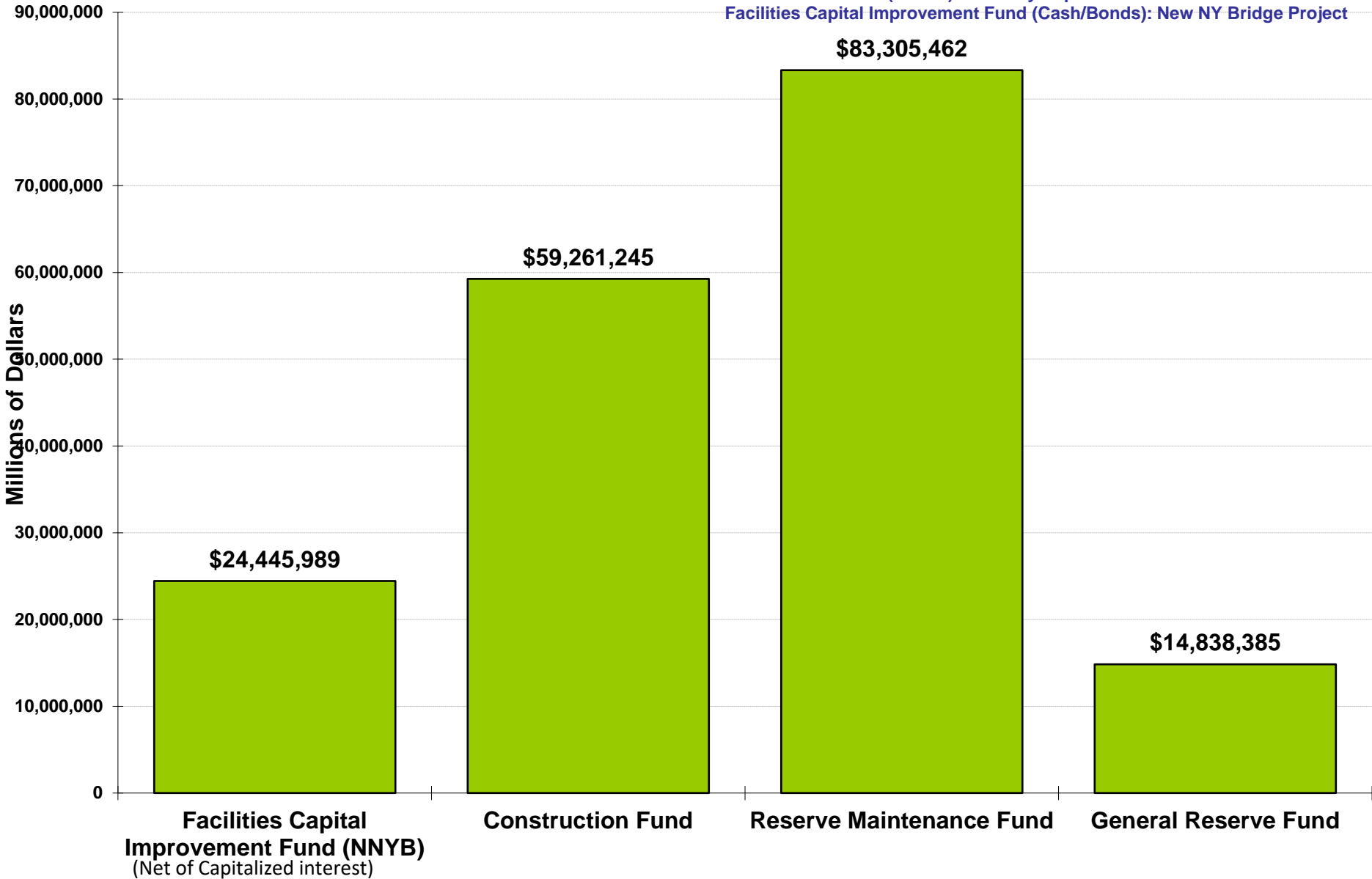
Note:

General Reserve Fund (Cash): State Police Equipment & Facilities

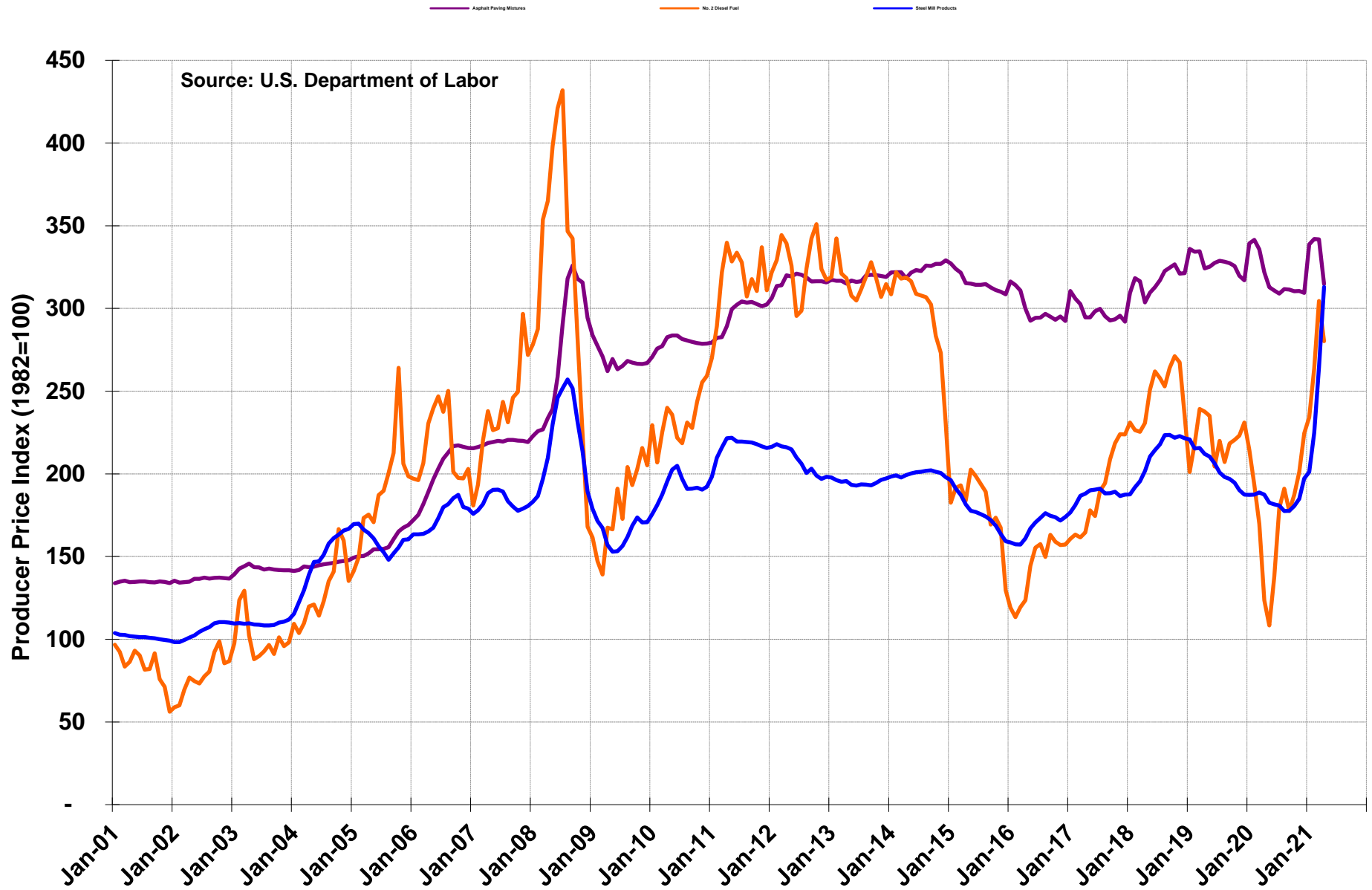
Reserve Maintenance Fund (Cash): Thruway Equipment & Capital

Construction Fund (Bonds): Thruway Capital

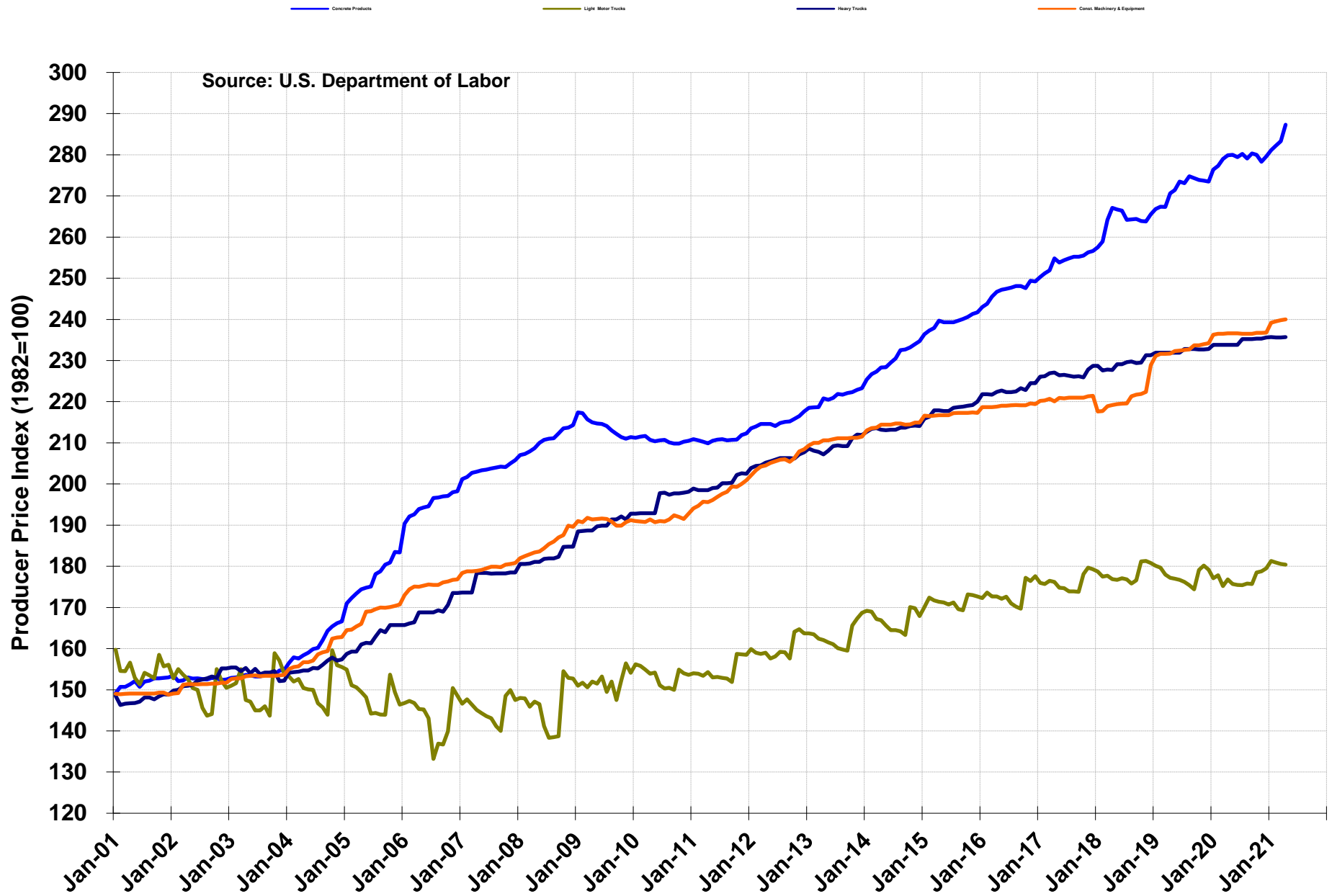
Facilities Capital Improvement Fund (Cash/Bonds): New NY Bridge Project



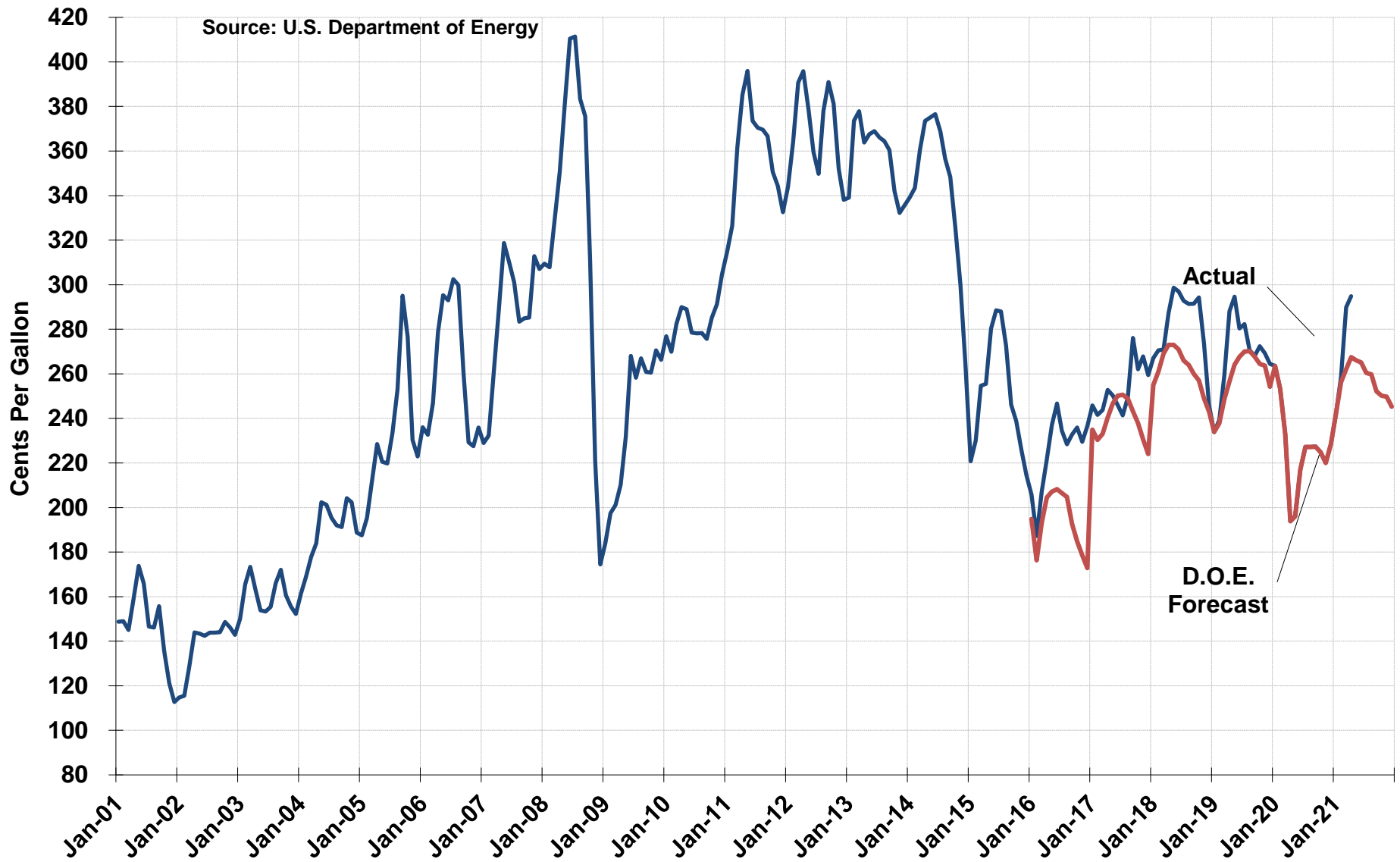
Producer Prices: Construction Inputs



Producer Prices: Construction Inputs



Average Retail Price of Gasoline in U.S. All Grades



Thruway Traffic Information

Thruway Traffic Information

	Year-To-Date			
	2020	2021	Change	Percent Change
Revenue Trips - Location				
Toll Ticket System				
Woodbury to Williamsville	58,885,531	64,074,078	5,188,547	8.8%
Erie Section	5,187,468	5,808,629	621,161	12.0%
Total Ticket System	64,072,999	69,882,707	5,809,708	9.1%
Bridges and Barriers				
Grand Island South	3,091,041	3,279,932	188,891	6.1%
Grand Island North	2,463,340	2,643,939	180,599	7.3%
GMMC Bridge	6,661,266	7,344,871	683,605	10.3%
Yonkers	4,409,380	4,798,294	388,914	8.8%
New Rochelle (I-95)	4,943,745	5,417,938	474,193	9.6%
Spring Valley (Commercial Only)	522,369	604,561	82,192	15.7%
Harriman	4,139,174	4,864,033	724,859	17.5%
Total Bridges and Barriers	26,230,315	28,953,568	2,723,253	10.4%
Total Trips	90,303,314	98,836,275	8,532,961	9.4%
Non-Revenue Trips	509,660	606,439	96,779	19.0%
Total Revenue Trips	89,793,654	98,229,836	8,436,182	9.4%

Revenue Trips - Type	2020	2021	Change	
Passenger	73,869,867	80,245,928	6,376,061	8.6%
Commercial	15,923,787	17,983,908	2,060,121	12.9%
Total Revenue Trips	89,793,654	98,229,836	8,436,182	9.4%

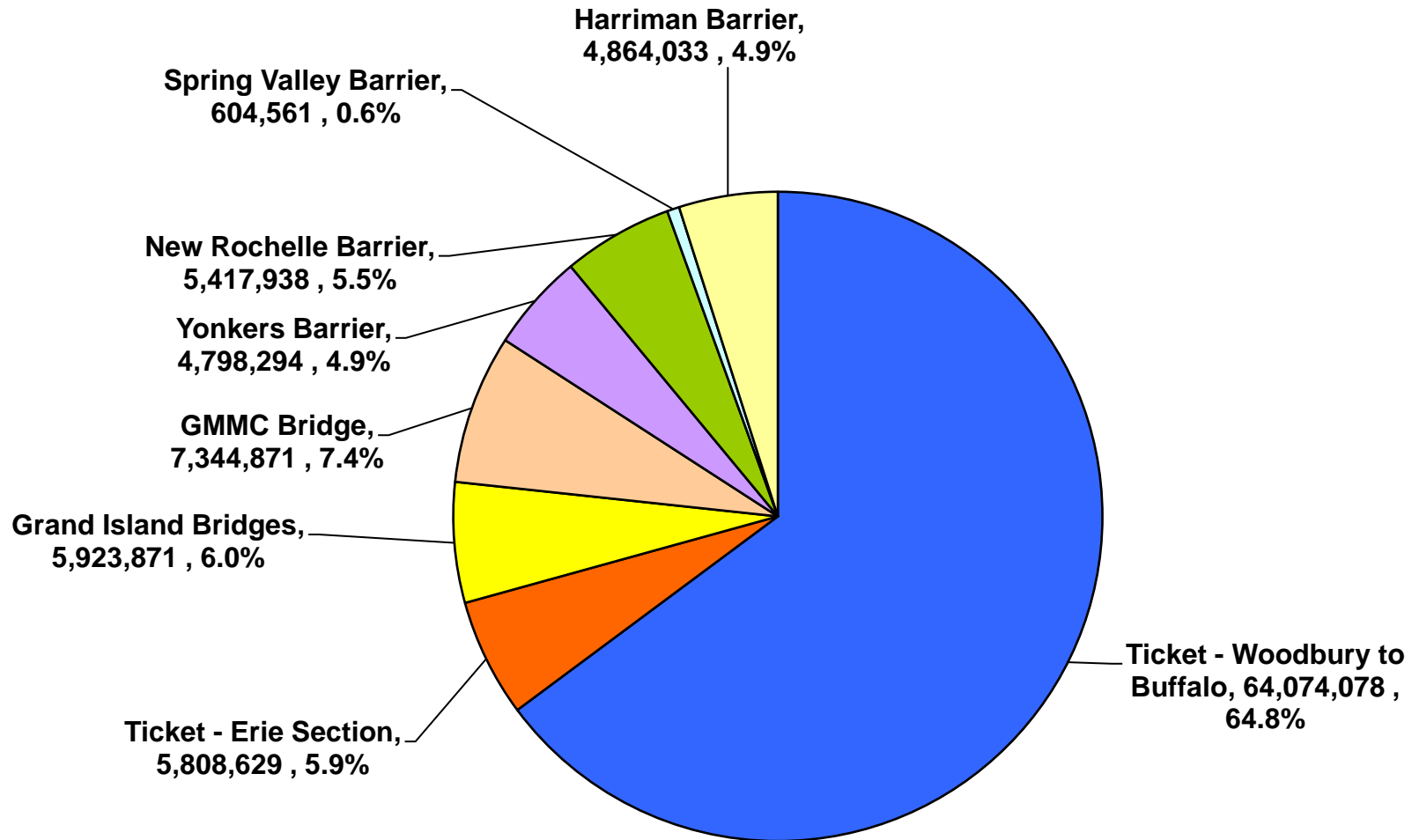
Miles Traveled - Revenue Trips

Toll Ticket System	1,379,113,705	1,476,320,847	97,207,142	7.05%
NY Division Bridge/Barriers	371,229,115	412,700,659	41,471,544	11.17%
Williamsville-Lackawanna	86,944,477	96,463,751	9,519,274	10.95%
Grand Island Bridges	55,348,350	59,030,160	3,681,810	6.65%
Total Revenue Trip Miles	1,892,635,647	2,044,515,417	151,879,770	8.02%

Average Trip Length (Miles) - All Trips - Ticketed System

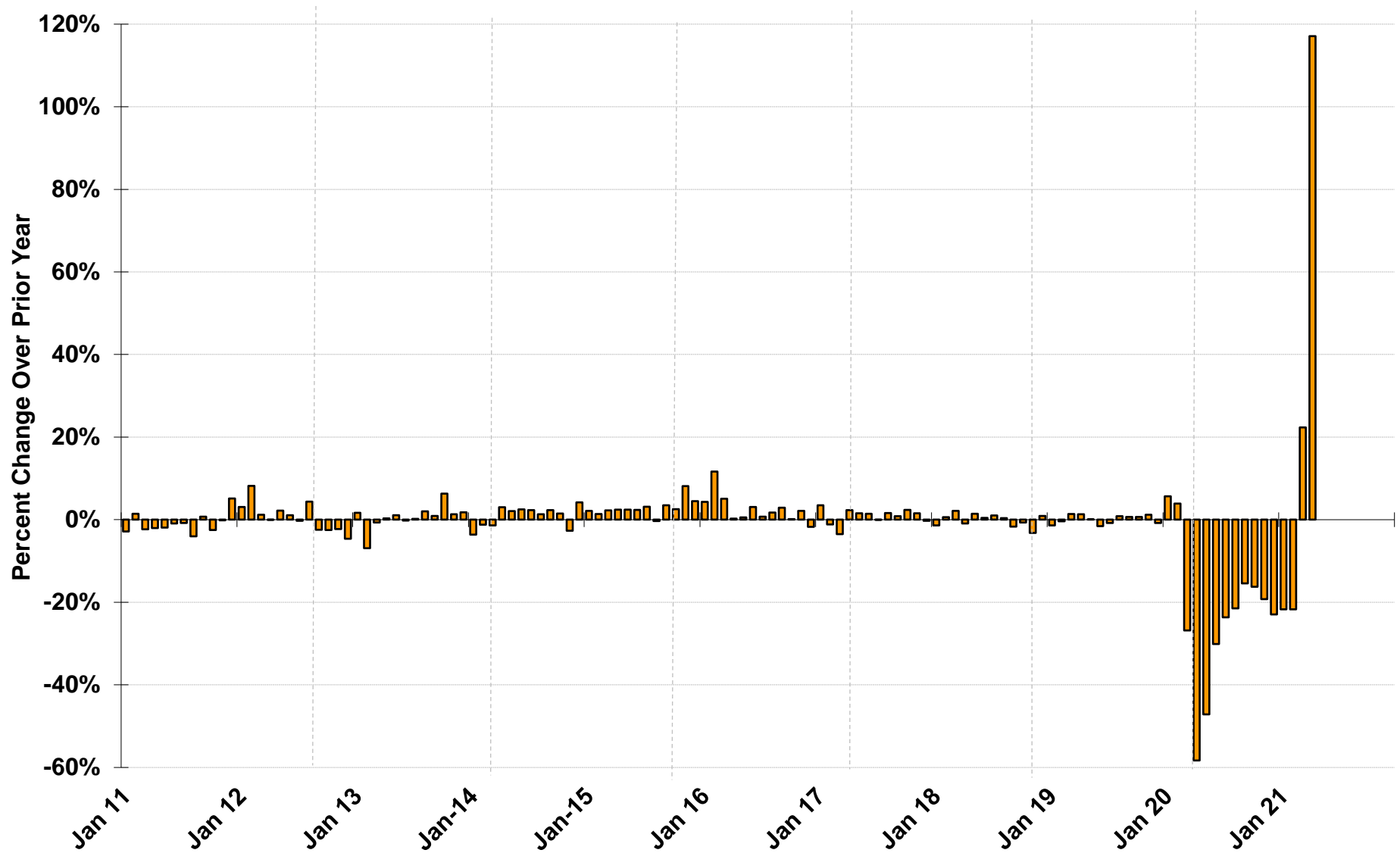
Passenger	32.96	15.58	(17.38)	-52.73%
Commercial	62.07	21.31	(40.76)	-65.67%
Overall	37.20	16.76	(20.44)	-54.95%

2021 YTD Total Thruway Trips, By Location



Percent Change in Monthly Thruway Traffic

Total Passenger and Commercial Revenue Trips



Percent Change in Monthly Thruway Traffic

By Passenger and Commercial Revenue Trips

