

**NEW YORK STATE THRUWAY AUTHORITY
DEPARTMENT OF ENGINEERING**

**ALBANY, NY
April 1, 2024**

**AMENDMENT NO. 1
TO**

**CONTRACT TAB 24-13
D214968
PAVEMENT REHABILITATION AND
MISCELLANEOUS WORK FROM MILEPOST
(MP) 467.0 TO MP 485.5 WESTBOUND AND
MP 483.0 TO MP 467.0 EASTBOUND
IN THE BUFFALO DIVISION
IN CHAUTAUQUA COUNTY**

**IN THE LETTING OF
APRIL 17, 2024**

NOTE: This amendment shall be attached to and become a part of the Proposal for Contract **TAB 24-13**.

NOTICE

For Electronic Bidders, the Project's amended EBSX file will automatically account for any necessary item changes (deletions, changes in quantities, or additions) that this Amendment may describe as being required regarding the project's estimated cost. Instructions to make physical changes to the Project Proposal's bid sheets are intended for "paper" Bidders who choose to submit bids via paper.

Questions and Answers for this project are available from the Authority's website, specifically at: http://www.thruway.ny.gov/netdata/contractors/documents/d214968_tab24-13_questions-and-answers-03-28-2024.pdf. This document may be updated periodically without formal issuance of an Amendment. Prospective bidders are advised to revisit this link weekly and before proposals are due, for any possible additional questions and answers information.

Similarly, additional Supplemental Information for this project is not presently available from the Authority's website. Prospective bidders are advised to revisit the website weekly and before proposals are due, for any possible additional supplemental information.

PROPOSAL

1. **ADD** the following Items:

<u>Contract Proposal Page</u>	<u>Item No.</u>	<u>Description</u>	<u>Unit</u>	<u>Estimated Quantity</u>
169A-A1	619.04	Type III Construction Barricade	EA	26
169A-A1	619.110512	(PVMS) Standard Size - Full Matrix (LED) No Optional Equipment Specified, Cellular Communications	EA	3

The “paper” Bidder must **RETURN THE ATTACHED PAGE 169A-A1** with its bid for this Contract.

PLANS

2. **ADD** new Drawing Number WZP-5, Sheet 26A-A1 of 126. Work Zone Traffic Control for Short Term Nighttime Construction at Exit 59 involving the Westbound Entrance Ramp Closure is now available.
3. **ADD** new Drawing Number WZP-6, Sheet 26B-A1 of 126. Work Zone Traffic Control for Short Term Nighttime Construction at Exit 59 involving the Westbound Exit Ramp Closure is now available.

The Bidder **MUST** complete Page **184** of the Proposal acknowledging receipt of this amendment. If the Bidder fails to complete the “Amendment Acknowledgement” sheet, his bid could be declared informal thereby delaying award of the contract.

PLEASE BE GOVERNED ACCORDINGLY WHEN SUBMITTING BIDS.

Brent E. Howard, P.E.
Chief Engineer



03/28/2024 2:09:02 PM

AASHTOWare Project™ Version 5.00 Revision 031

Proposal Schedule of Items

Proposal ID: D214968

Project(s): B53072

Contractor: _____

SECTION: 0001 SECTION 1

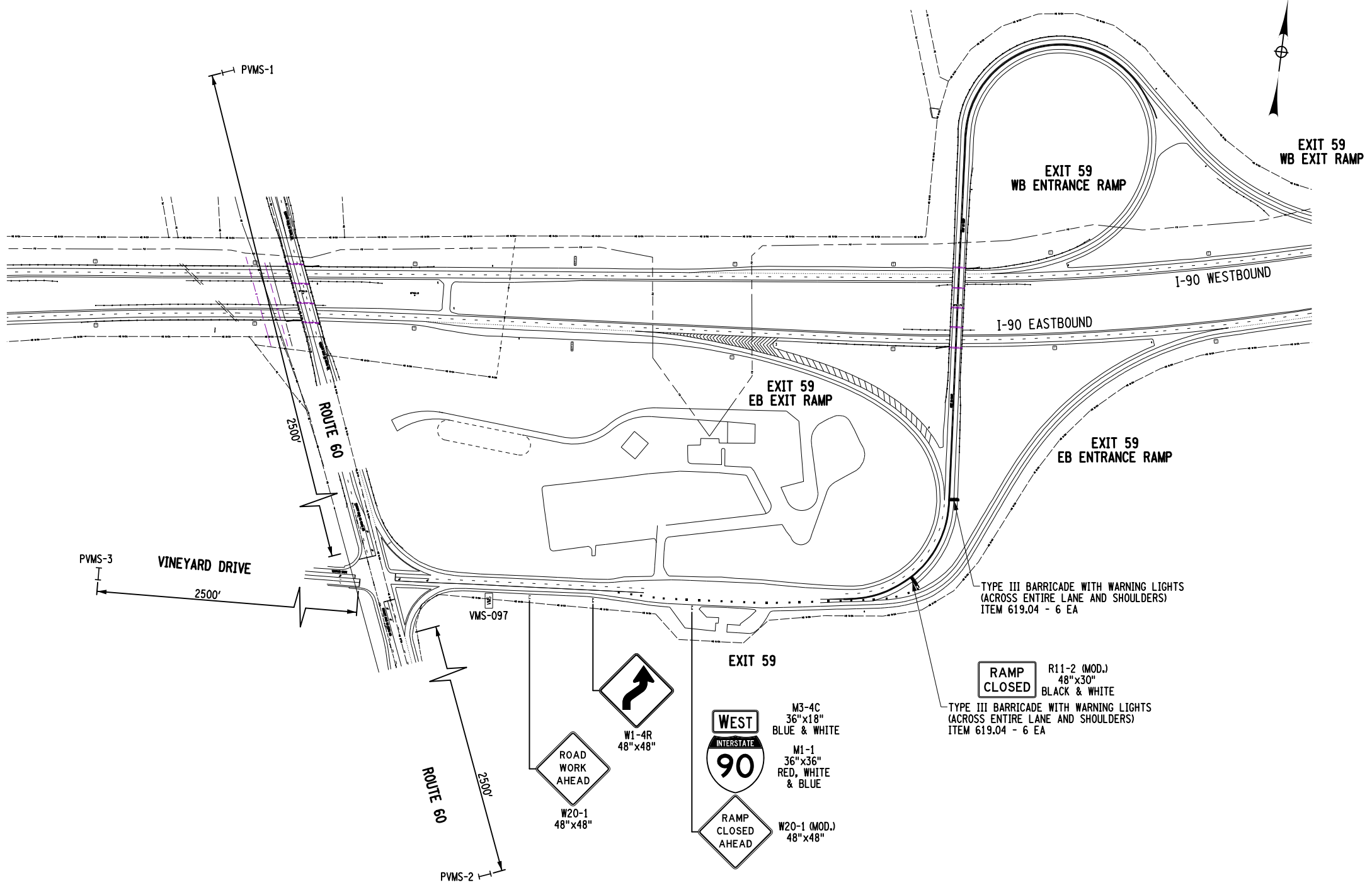
Alt Set ID: **Alt Mbr ID:**

Proposal Line Number	Item ID Description	Approximate Quantity and Units	Unit Price		Bid Amount	
			Dollars	Cents	Dollars	Cents
0200	619.04 TYPE III CONSTRUCTION BARRICADE	26.000 EACH	_____.	_____.	_____.	_____.
0202	619.110512 PORTABLE, VARIABLE MESSAGE SIGN (PVMS) STANDARD SIZE - FULL MATRIX (LED) NO OPTIONAL EQUIPMENT SPEC, CELLULAR COLUMN	3.000 EACH	_____.	_____.	_____.	_____.
Section: 0001			Total:		_____.	
			Total Bid:		_____.	

THIS SHEET DOES NOT SUPERSEDE ANY SHEET

GRID NORTH
26A-A1
126

EXIT 59 ENTRANCE RAMP CLOSURE				
VMS SCHEDULE				
NAME LOCATION	PRE-CLOSURE		DURING CLOSURE	
	1ST PANEL	2ND PANEL	1ST PANEL	2ND PANEL
PVMS-1 I-90 WB NY RTE 60 EB	EXIT 59 WB ENTRANCE TO CLOSE	(DATE) XX PM - XX AM	EXIT 59 WB ENTRANCE CLOSED	USE ALTERNATE ROUTE
PVMS-2 I-90 WB NY RTE 60 WB	EXIT 59 WB ENTRANCE TO CLOSE	(DATE) XX PM - XX AM	EXIT 59 WB ENTRANCE CLOSED	USE ALTERNATE ROUTE
PVMS-3 I-90 WB VINEYARD DR	EXIT 59 WB ENTRANCE TO CLOSE	(DATE) XX PM - XX AM	EXIT 59 WB ENTRANCE CLOSED	USE ALTERNATE ROUTE
VMS-097 I-90 WB INT 59 RAMP	EXIT 59 WB ENTRANCE TO CLOSE	(DATE) XX PM - XX AM	EXIT 59 WB ENTRANCE CLOSED	USE ALTERNATE ROUTE



GENERAL SHEET NOTES:

- CONTRACTOR SHALL ONLY CLOSE EXIT 59 WB RAMPS OVERNIGHT.
- PVMS BOARDS SHALL INDICATE RAMP CLOSURE TWO WEEKS IN ADVANCE OF WORK; CONTRACTOR SHALL COORDINATE WITH THE THRUWAY AUTHORITY PRIOR TO CLOSING OF RAMPS.
- ALL SIGNS ARE BLACK ON ORANGE UNLESS DESIGNATED OTHERWISE.
- THE I-90 EXIT 59 WB ENTRANCE RAMP CLOSURE REQUIRES THE USE OF ALL PVMS AS PER THE "EXIT 59 WB ENTRANCE RAMP CLOSURE - PVMS SCHEDULE".

PORTABLE VARIABLE MESSAGE SIGN NOTES:

- THE CONTRACTOR SHALL PROVIDE PORTABLE VARIABLE MESSAGE SIGNS TO BE USED FOR THE DURATION OF THIS CONTRACT, A.O.B.E. VARIABLE MESSAGE SIGNS ARE INTENDED TO SUPPLEMENT FIXED SIGNS AND ARE NOT INTENDED TO REPLACE THEM. VARIABLE MESSAGE SIGNS WILL BE PAID FOR UNDER ITEM 619.110512.
- THE CONTRACTOR SHALL SUPPLY AND INSTALL PORTABLE VARIABLE MESSAGE SIGNS AT LOCATIONS AS INDICATED ON THE PLANS. MESSAGING SHALL BE PER THE PLANS.
- LOCATIONS:
 - VARIABLE MESSAGE SIGNS SHALL BE PLACED WHERE THEY ARE VISIBLE TO TRAFFIC FROM AT LEAST 2,800 FEET AWAY BOTH DAY AND NIGHT.
 - VARIABLE MESSAGE SIGNS ARE TO BE PLACED BEYOND THE SHOULDER WHENEVER PRACTICAL.
- THE PORTABLE VARIABLE MESSAGE SIGNS SHALL BE LOCATED PER THE PLANS AND AS DEEMED NECESSARY BY THE ENGINEER AND THE NYSTA DIVISION TRAFFIC SUPERVISOR. ALTHOUGH PAYMENT IS PER SIGN, THE CONTRACTOR WILL BE REQUIRED TO MOVE THE SIGNS AS REQUESTED BY EITHER THE ENGINEER OR THE NYSTA DIVISION TRAFFIC SUPERVISOR. NO ADDITIONAL PAYMENT WILL BE MADE FOR SIGN MOVEMENTS.
- THE PROPER MESSAGE TEXT SHALL BE PER THE PLANS. MESSAGES DISPLAYED ON PVMS SHALL STATE SPECIFIC INFORMATION PERTAINING TO EITHER CURRENT CONDITIONS OR UPCOMING CHANGES THAT AFFECT TRAFFIC.
- UNLESS A UNIT WILL BE REACTIVATED LATER IN THE DAY AT THE SAME LOCATION, WHEN THE DISPLAYED MESSAGE IS NO LONGER NEEDED, AS DETERMINED BY THE ENGINEER, THE UNIT SHALL BE TURNED OFF AND THE DISPLAY TURNED 90 DEGREES FROM TRAFFIC. IN ADDITION, UNLESS LOCATED BEHIND AN EXISTING OR TEMPORARY BARRIER SYSTEM THAT WOULD PREVENT AN ERRANT VEHICLE FROM HITTING A PVMS, IT SHALL BE MOVED OUTSIDE THE CLEAR ZONE, AS DETERMINED BY THE ENGINEER, OR TO A SAFE STORAGE AREA APPROVED BY THE ENGINEER. IF DURING WORK HOURS THE ORIGINAL MESSAGE IS NO LONGER NECESSARY, BUT THE PVMS WILL STILL BE NEEDED LATER IN THE DAY AT THE SAME LOCATION, THE PVMS MAY BE PUT IN A STANDBY MODE IN LIEU OF MOVING IT. THE STANDBY MODE DISPLAY IS BLANK WITH NO TEXT OR CHARACTERS.

LEGEND	
	CONSTRUCTION SIGN
	CHANNELIZING DEVICE
	ARROW PANEL
	EXISTING VMS SIGN
	PROPOSED PVMS SIGN
	TYPE III BARRICADE WITH LIGHTS

IT IS A VIOLATION OF LAW FOR ANY PERSON, UNLESS THEY ARE ACTING UNDER THE DIRECTION OF A LICENSED PROFESSIONAL ENGINEER, ARCHITECT, LANDSCAPE ARCHITECT, OR LAND SURVEYOR, TO ALTER AN ITEM IN ANY WAY. IF AN ITEM BEARING THE STAMP OF A LICENSED PROFESSIONAL IS ALTERED, THE ALTERING ENGINEER, ARCHITECT, LANDSCAPE ARCHITECT, OR LAND SURVEYOR SHALL STAMP THE DOCUMENT AND INCLUDE THE NOTATION "ALTERED BY" FOLLOWED BY THEIR SIGNATURE, THE DATE OF SUCH ALTERATION, AND A SPECIFIC DESCRIPTION OF THE ALTERATION.

REVISIONS			
DATE	DESCRIPTION	BY	SYM.

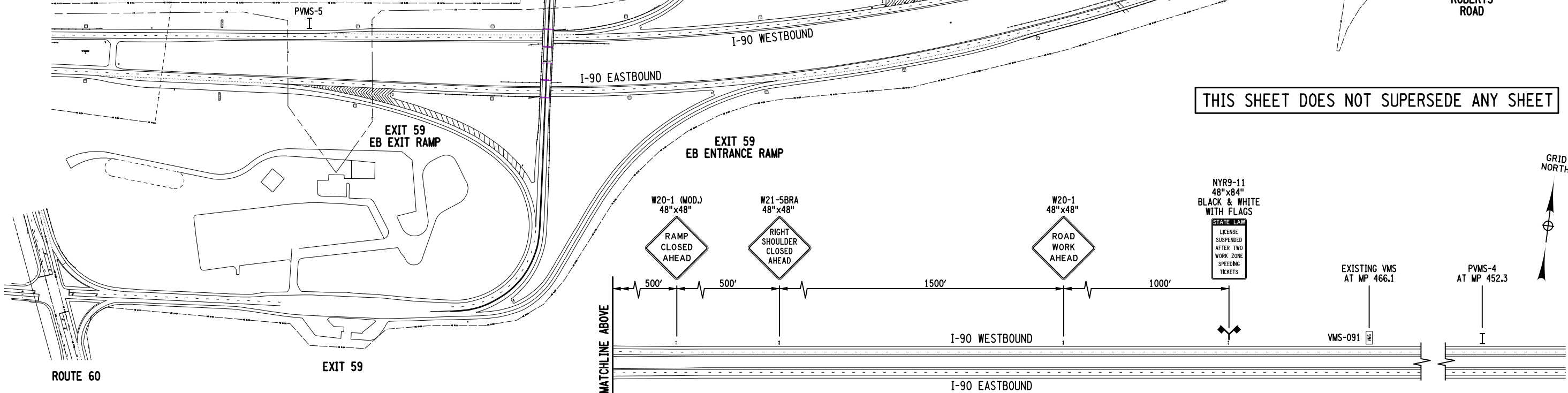


TITLE OF PROJECT ROADSIDE IMPROVEMENTS	CONTRACT NUMBER: TAB 24-13
LOCATION OF PROJECT BUFFALO DIVISION MP 467.00 TO MP 485.50	DATE: 03/28/2024
TITLE OF DRAWING WORK ZONE TRAFFIC CONTROL EXIT 59 NIGHT TIME WESTBOUND ENTRANCE RAMP CLOSURE	DRAWING NUMBER: WZP-5

DESIGNED BY: B. WALKER
 CHECKED BY: J. JOHNS
 DRAFTED BY: S. ROMEISER
 CHECKED BY: S. ROMEISER
 DESIGN SUPERVISOR: R. CARTWRIGHT
 PLOTTED BY: sromeiser
 Design File: 3/28/2024
 Project: 19281047381103.cph_wzp_05.dgn
 7:55:13 AM



EXIT 59 EXIT RAMP CLOSURE				
VMS SCHEDULE				
NAME LOCATION	PRE-CLOSURE		DURING CLOSURE	
	1ST PANEL	2ND PANEL	1ST PANEL	2ND PANEL
VMS-091 I-90 WB MP 466.1	EXIT 59 WB EXIT TO CLOSE	(DATE) XX PM - XX AM	EXIT 59 WB EXIT CLOSED	USE ALTERNATE ROUTE
PVMS-4 I-90 WB MP 452.3	EXIT 59 WB EXIT TO CLOSE	(DATE) XX PM - XX AM	EXIT 59 WB EXIT CLOSED	USE ALTERNATE ROUTE
PVMS-5 I-90 WB MP 469.93	EXIT 59 WB EXIT TO CLOSE	(DATE) XX PM - XX AM	EXIT 59 WB EXIT CLOSED	USE ALTERNATE ROUTE



EXIT 59 WB EXIT RAMP CLOSURE
SHORT TERM NIGHTTIME CONSTRUCTION

GENERAL SHEET NOTES:

- CONTRACTOR SHALL ONLY CLOSE EXIT 59 WB RAMPS OVERNIGHT.
- PVMS BOARDS SHALL INDICATE RAMP CLOSURE TWO WEEKS IN ADVANCE OF WORK; CONTRACTOR SHALL COORDINATE WITH THE THRUWAY AUTHORITY PRIOR TO CLOSING OF RAMP(S).
- ALL SIGNS ARE BLACK ON ORANGE UNLESS DESIGNATED OTHERWISE.

PORTABLE VARIABLE MESSAGE SIGN NOTES:

- THE CONTRACTOR SHALL PROVIDE PORTABLE VARIABLE MESSAGE SIGNS TO BE USED FOR THE DURATION OF THIS CONTRACT, A.O.B.E. VARIABLE MESSAGE SIGNS ARE INTENDED TO SUPPLEMENT FIXED SIGNS AND ARE NOT INTENDED TO REPLACE THEM. VARIABLE MESSAGE SIGNS WILL BE PAID FOR UNDER ITEM 619.110512.
- THE CONTRACTOR SHALL SUPPLY AND INSTALL PORTABLE VARIABLE MESSAGE SIGNS AT LOCATIONS AS INDICATED ON THE PLANS. MESSAGING SHALL BE PER THE PLANS.
- LOCATIONS:
 - VARIABLE MESSAGE SIGNS SHALL BE PLACED WHERE THEY ARE VISIBLE TO TRAFFIC FROM AT LEAST 2,800 FEET AWAY BOTH DAY AND NIGHT.
 - VARIABLE MESSAGE SIGNS ARE TO BE PLACED BEYOND THE SHOULDER WHENEVER PRACTICAL.
- THE PORTABLE VARIABLE MESSAGE SIGNS SHALL BE LOCATED PER THE PLANS AND AS DEEMED NECESSARY BY THE ENGINEER AND THE NYSTA DIVISION TRAFFIC SUPERVISOR. ALTHOUGH PAYMENT IS PER SIGN, THE CONTRACTOR WILL BE REQUIRED TO MOVE THE SIGNS AS REQUESTED BY EITHER THE ENGINEER OR THE NYSTA DIVISION TRAFFIC SUPERVISOR. NO ADDITIONAL PAYMENT WILL BE MADE FOR SIGN MOVEMENTS.
- THE PROPER MESSAGE TEXT SHALL BE PER THE PLANS. MESSAGES DISPLAYED ON PVMS SHALL STATE SPECIFIC INFORMATION PERTAINING TO EITHER CURRENT CONDITIONS OR UPCOMING CHANGES THAT AFFECT TRAFFIC.
- UNLESS A UNIT WILL BE REACTIVATED LATER IN THE DAY AT THE SAME LOCATION, WHEN THE DISPLAYED MESSAGE IS NO LONGER NEEDED, AS DETERMINED BY THE ENGINEER, THE UNIT SHALL BE TURNED OFF AND THE DISPLAY TURNED 90 DEGREES FROM TRAFFIC. IN ADDITION, UNLESS LOCATED BEHIND AN EXISTING OR TEMPORARY BARRIER SYSTEM THAT WOULD PREVENT AN ERRANT VEHICLE FROM HITTING A PVMS, IT SHALL BE MOVED OUTSIDE THE CLEAR ZONE, AS DETERMINED BY THE ENGINEER, OR TO A SAFE STORAGE AREA APPROVED BY THE ENGINEER. IF DURING WORK HOURS THE ORIGINAL MESSAGE IS NO LONGER NECESSARY, BUT THE PVMS WILL STILL BE NEEDED LATER IN THE DAY AT THE SAME LOCATION, THE PVMS MAY BE PUT IN A STANDBY MODE IN LIEU OF MOVING IT. THE STANDBY MODE DISPLAY IS BLANK WITH NO TEXT OR CHARACTERS.

CHECKED BY: B. WALKER

DRAFTED BY: S. ROMEISER

CHECKED BY: J. JOHNS

DESIGNED BY: B. WALKER

DESIGN SUPERVISOR: R. CARTWRIGHT

ALTERED ON:	AFFIXED ON: 03/28/2024

LEGEND	
	CONSTRUCTION SIGN
	CHANNELIZING DEVICE
	EXISTING PVMS SIGN
	TYPE III BARRICADE WITH LIGHTS

IT IS A VIOLATION OF LAW FOR ANY PERSON, UNLESS THEY ARE ACTING UNDER THE DIRECTION OF A LICENSED PROFESSIONAL ENGINEER, ARCHITECT, LANDSCAPE ARCHITECT, OR LAND SURVEYOR, TO ALTER AN ITEM IN ANY WAY. IF AN ITEM BEARING THE STAMP OF A LICENSED PROFESSIONAL IS ALTERED, THE ALTERING ENGINEER, ARCHITECT, LANDSCAPE ARCHITECT, OR LAND SURVEYOR SHALL STAMP THE DOCUMENT AND INCLUDE THE NOTATION "ALTERED BY" FOLLOWED BY THEIR SIGNATURE, THE DATE OF SUCH ALTERATION, AND A SPECIFIC DESCRIPTION OF THE ALTERATION.

REVISIONS			
DATE	DESCRIPTION	BY	SYM.



TITLE OF PROJECT ROADSIDE IMPROVEMENTS	CONTRACT NUMBER: TAB 24-13
LOCATION OF PROJECT BUFFALO DIVISION MP 467.00 TO MP 485.50	DATE: 03/28/2024
TITLE OF DRAWING WORK ZONE TRAFFIC CONTROL EXIT 59 NIGHT TIME WESTBOUND EXIT RAMP CLOSURE	DRAWING NUMBER: WZP-6

